

UNITED STATES
DEPARTMENT OF THE INTERIOR
GEOLOGICAL SURVEY

30-045-28645

APPLICATION FOR PERMIT TO DRILL, DEEPEN, OR PLUG BACK

1a. TYPE OF WORK

DRILL ☒DEEPEN ☐PLUG BACK ☐

b. TYPE OF WELL

OIL
WELL ☒GAS
WELL ☐OTHER ☐SINGLE
ZONE ☒MULTIPLE
ZONE ☐

2. NAME OF OPERATOR

DUGAN PRODUCTION CORP. 6515

3. ADDRESS OF OPERATOR

P.O. Box 420, Farmington, NM 87499

4. LOCATION OF WELL (Report location clearly and in accordance with any State requirements.)*

At surface

2225' FSL & 975' FEL

At proposed prod. zone

14. DISTANCE IN MILES AND DIRECTION FROM NEAREST TOWN OR POST OFFICE*

approx. 9 1/2 miles southwest of Blanco Trading Post

15. DISTANCE FROM PROPOSED*
LOCATION TO NEAREST
PROPERTY OR LEASE LINE, FT.
(Also to nearest drlg. unit line, if any)

975'

16. NO. OF ACRES IN LEASE

1760.28

18. DISTANCE FROM PROPOSED LOCATION* approx. 2800'
TO NEAREST WELL, DRILLING, COMPLETED, from Dugan's
OR APPLIED FOR, ON THIS LEASE, FT. Flo Jo #1

19. PROPOSED DEPTH

4615'

17. NO. OF ACRES ASSIGNED*
TO THIS WELL

80

20. ROTARY OR CABLE TOOLS

Rotary

21. ELEVATIONS (Show whether DF, RT, GR, etc.)

6550' GL

22. APPROX. DATE WORK WILL START*

ASAP

23. PROPOSED CASING AND CEMENTING PROGRAM

SIZE OF HOLE	SIZE OF CASING	WEIGHT PER FOOT	SETTING DEPTH	QUANTITY OF CEMENT
12-1/4"	8-5/8"	24#	200'	159 cf circ. to surface
7-7/8"	4-1/2"	10.5#	4615'	1457 cf

Plan to drill a 12-1/4" hole and set 200' of 8-5/8" OD, 24#, J-55 surface casing; then plan to drill a 7-7/8" hole to total depth with gel-water-mud program to test Gallup formation. Plan to run IES and CDL logs. If determined productive, will run 4-1/2", 10.5#, J-55 casing, selectively perforate, frac, clean out after frac and complete well.

RECEIVED

DEC 16 1991

OIL CON. DIV
DIST. 3

IN ABOVE SPACE DESCRIBE PROPOSED PROGRAM: If proposal is to deepen or plug back, give data on present productive zone and proposed new productive zone. If proposal is to drill or deepen directionally, give pertinent data on subsurface locations and measured and true vertical depths. Give blowout preventer program, if any.

24.

SIGNED

Sherman J. Dugan

TITLE

Vice President/
Geologist

DATE 11-1-91

(This space for Federal or State office use)

PERMIT NO.

APPROVAL DATE

APPROVED BY

CONDITIONS OF APPROVAL, IF ANY:

TITLE

WOOD

APPROVED
AS AMENDED

DEC 11 1991

AREA MANAGER

SECRET

Feb 2 1964

NO. 100-100000

Submit to Appropriate
District Office
State Lease - 4 copies
Fee Lease - 3 copies

State of New Mexico
Energy, Minerals and Natural Resources Department

Form C-102
Revised 1-1-89

OIL CONSERVATION DIVISION

P.O. Box 2088
Santa Fe, New Mexico 87504-2088

DISTRICT I

P.O. Box 1980, Hobbs, NM 88240

DISTRICT II

P.O. Drawer DD, Artesia, NM 88210

DISTRICT III

1000 Rio Brazos Rd., Aztec, NM 87410

WELL LOCATION AND ACREAGE DEDICATION PLAT

All Distances must be from the outer boundaries of the section

Operator Dugan Production Corporation			Lease Flo Jo		Well No. 4
Unit Letter I	Section 1	Township 23 North	Range 11 West	County San Juan	
Actual Footage Location of Well: 2225 feet from the South line and 975 feet from the East line					
Ground level Elev. 6550	Producing Formation Gallup		Pool South Bisti Gallup Ext.	Dedicated Acreage: 80 Acres	

- Outline the acreage dedicated to the subject well by colored pencil or hatchure marks on the plat below.
- If more than one lease is dedicated to the well, outline each and identify the ownership thereof (both as to working interest and royalty).
- If more than one lease of different ownership is dedicated to the well, have the interest of all owners been consolidated by communitization, unitization, force-pooling, etc.?
☐ Yes ☐ No If answer is "yes" type of consolidation _____
If answer is "no" list the owners and tract descriptions which have actually been consolidated. (Use reverse side of this form if necessary.)
No allowable will be assigned to the well until all interests have been consolidated (by communitization, unitization, forced-pooling, or otherwise) or until a non-standard unit, eliminating such interest, has been approved by the Division.

OPERATOR CERTIFICATION

I hereby certify that the information contained herein is true and complete to the best of my knowledge and belief.

Signature

Printed Name

Sherman E. Dugan

Position

Vice President

Company

Dugan Production Corp.

Date

4-16-90

SURVEYOR CERTIFICATION

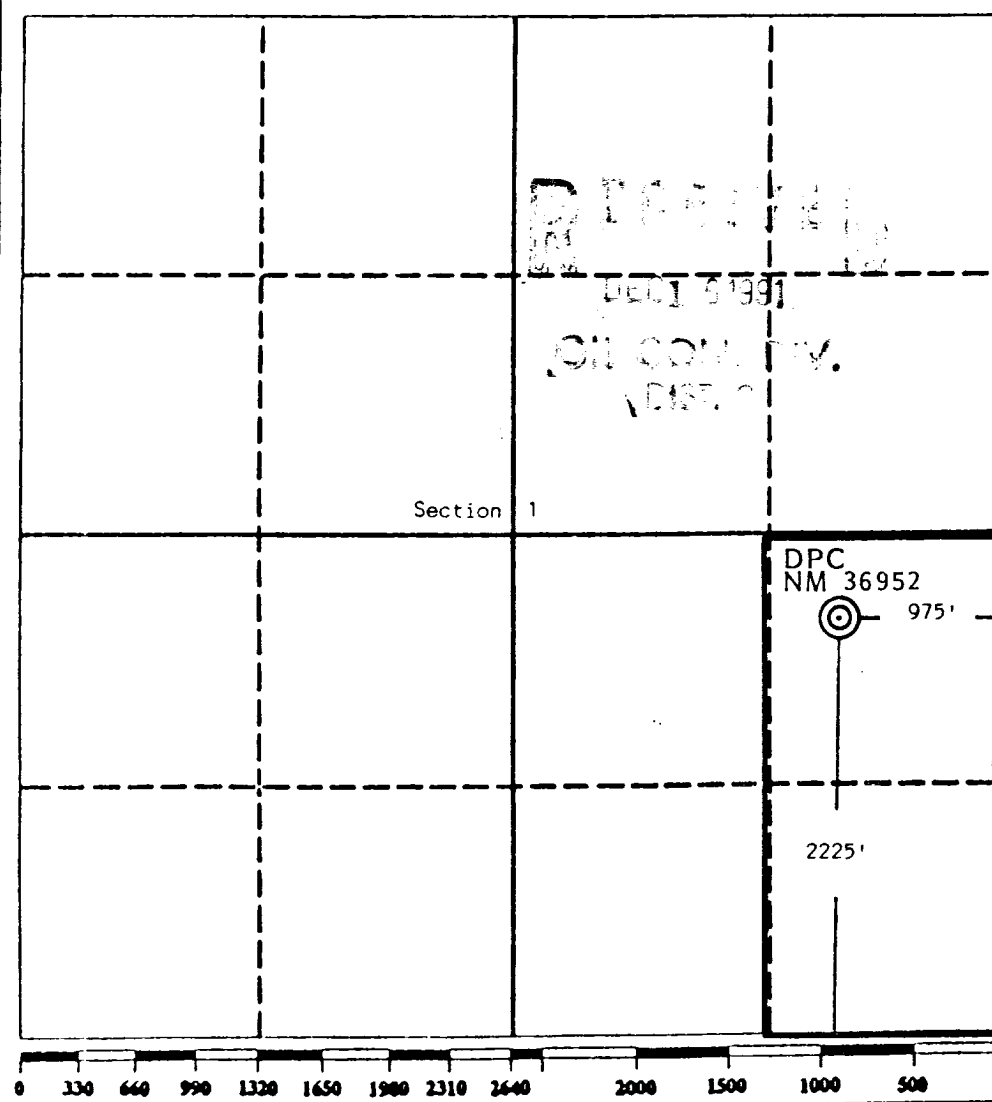
I hereby certify that the well location shown on this plat was plotted from field notes of actual surveys made by me or under my supervision, and that the same is true and correct to the best of my knowledge and belief.

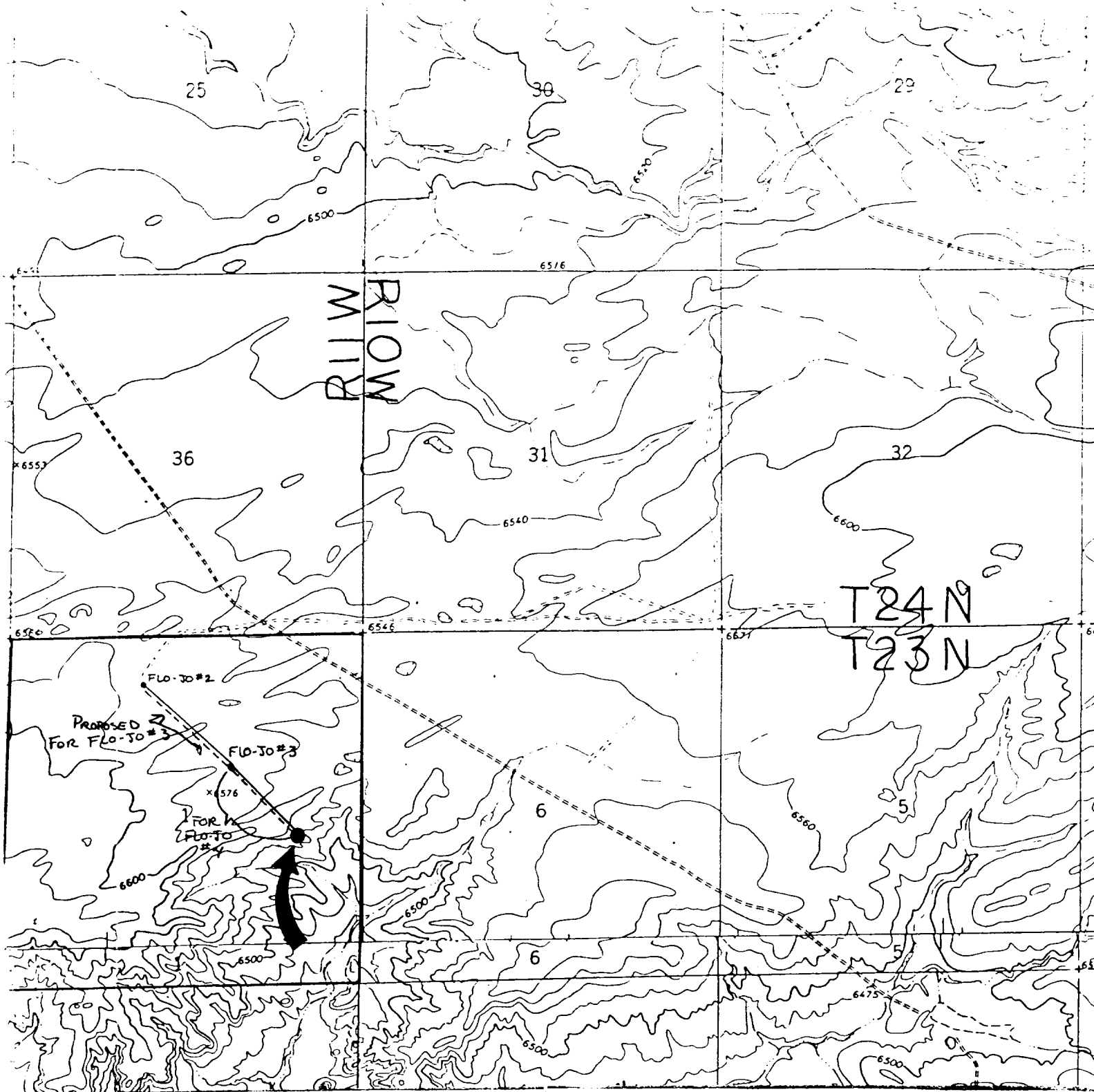
Date Surveyed

February 22, 1990

Signature & Seal of
Professional Surveyor

Edgar E. Risenhoover
Edgar E. Risenhoover, P.S.





DUGAN PRODUCTION CORP. - Flo Jo #4

Existing Roads

Exhibit E

Vicinity of nearest town or reference pt.
approx. 9½ miles southwest of Blanco
Trading Post

Type of surface dirt

Conditions good

Other _____

Reference map: USGS map : Huerfano Trading
Post SW 1966; Pueblo Bonito NW 1966

Planned Access Road(s)

Exhibit E

Width 20' Maximum grades 2%

Drainage design as required

Cuts & Fills see diagram

Surfacing material none required

Turnouts

Waterbars

Culverts

Gates

Cattleguards

Fence cuts

Road will
parallel
fluids line.

Access road(s) (do) do not cross (Fed/Ind) land.