

UNITED STATES
DEPARTMENT OF THE INTERIOR
BUREAU OF LAND MANAGEMENTSUBMIT IN TRIPLICATE*
(Other instructions on
reverse side)FORM APPROVED
OMB NO. 1004-0136
Expires: February 28, 1995

APPLICATION FOR PERMIT TO DRILL OR DEEPEN

1a. TYPE OF WORK

DRILL ☒DEEPEN ☐

b. TYPE OF WELL

OIL
WELL ☒GAS
WELL ☐

OTHER

SINGLE
SONE ☒MULTIPLE
SONE ☐

2. NAME OF OPERATOR

DUGAN PRODUCTION CORP. 6515

3. ADDRESS AND TELEPHONE NO.

P.O. Box 420, Farmington, NM 87499

4. LOCATION OF WELL (Report location clearly and in accordance with any State requirements.)

At surface

330' FSL & 1190' FWL (SW/4 SW/4)

At proposed prod. zone

14. DISTANCE IN MILES AND DIRECTION FROM NEAREST TOWN (or POST OFFICE)

approx. 12 miles SW of Blanco Trading Post, NM

16. DISTANCE FROM PROPOSED
LOCATION TO NEAREST
PROPERTY OR LEASE LINE, FT.
(Also to nearest drig. unit line, if any)

330'

18. DISTANCE FROM PROPOSED LOCATION
TO NEAREST WELL, DRILLING, COMPLETED,
OR APPLIED FOR, ON THIS LEASE, FT.

N/A

This action is subject to 4630-chemical and

21. ELEVATIONS (Show whether DF, RT, GR, etc.)

6590' GL (est)

procedural review pursuant to 43 CFR 3165.3
and appeal pursuant to 43 CFR 3165.4.

5. LEASE DESIGNATION AND SERIAL NO.

NM 36952

6. IF INDIAN, ALLOTTEE OR TRIBE NAME

7. UNIT AGREEMENT NAME

8. FARM OR LEASE NAME, WELL NO.

Flo Jo #7

9. AIR WELL NO.

30-045-29368

10. FIELD AND POOL, OR WILDCAT

South Bisti Gallup 586.0

11. SEC., T., R., N., OR S.E.
AND SURVEY OR AREA

Unit M,

Sec. 1, T23N, R11W

12. COUNTY OR PARISH

San Juan

13. STATE

NM

16. NO. OF ACRES IN LEASE

1760

17. NO. OF ACRES ASSIGNED
TO THIS WELL

W/

80

19. PROPOSED DEPTH

4630-chemical and

20. ROTARY OR CABLE TOOLS

Rotary

22. APPROX. DATE WORK WILL START

ASAP

23. PROPOSED CASING AND CEMENTING PROGRAM

SIZE OF HOLE	GRADE SIZE OF CASING	WEIGHT PER FOOT	SETTING DEPTH	QUANTITY OF CEMENT
12-1/4"	8-5/8"	24#	200'	159 cf circ. to surface
7-7/8"	4-1/2"	10.5#	4630'	1452 cf circ. to surface

DRILLING OPERATIONS AUTHORIZED ARE
SUBJECT TO COMPLIANCE WITH ATTACHED
"GENERAL REQUIREMENTS"

Plan to drill a 12-1/4" hole and set 200' of 8-5/8" OD, 24#, J-55 surface casing;
then plan to drill a 7-7/8" hole to total depth with gel-water-mud program to
test the Gallup formation. Plan to run IES and CDL logs. If determined productive,
will run 4-1/2", 10.5#, J-55 casing with stage tool, selectively perforate, frac,
clean out after frac and complete well.

RECEIVED
APR 18 1996OIL CON. DIV.
DIST. 3

IN ABOVE SPACE DESCRIBE PROPOSED PROGRAM: If proposal is to deepen, give data on present productive zones and proposed new productive zones. If proposal is to drill or
deepen directionally, give pertinent data on subsurface locations and measured and true vertical depths. Give blowout preventer program, if any.

34.

SIGNED

Sherman E. Dugan

TITLE Vice-President

DATE 3/4/96

(This space for Federal or State office use)

PERMIT NO.

APPROVAL DATE

Application approval does not warrant or certify that the applicant holds legal or equitable title to those rights in the subject lease which would entitle the applicant to conduct operations thereon.
CONDITIONS OF APPROVAL, IF ANY:

NMOC

APPROVED
AS AMENDED

APPROVED BY

TITLE

DATE APR 15 1996

*See Instructions On Reverse Side

Title 18 U.S.C. Section 1001, makes it a crime for any person knowingly and willfully to make to any department or agency of the
United States any false, fictitious or fraudulent statements or representations as to any matter within its jurisdiction.

DISTRICT MANAGER

District I
PO Box 1988, Hobbs, NM 88241-1988
District II
PO Drawer DD, Artesia, NM 88211-0719
District III
1000 Rio Brazos Rd., Aztec, NM 87410
District IV
PO Box 2088, Santa Fe, NM 87504-2088

State of New Mexico
Energy, Minerals & Natural Resources Department

OIL CONSERVATION DIVISION
PO Box 2088
Santa Fe, NM 87504-2088

Form C-102
Revised February 21, 1994
Instructions on back
Submit to Appropriate District Office
State Lease - 4 Copies
Fee Lease - 3 Copies

☐ AMENDED REPORT

WELL LOCATION AND ACREAGE DEDICATION PLAT

API Number 30-045-29368		Pool Code 05860		Pool Name Bisti Gallup South	
Property Code 003684		Property Name Flo Jo			Well Number 7
OGRID No. 006515		Operator Name Dugan Production Corporation			Elevation 6590' Estimated

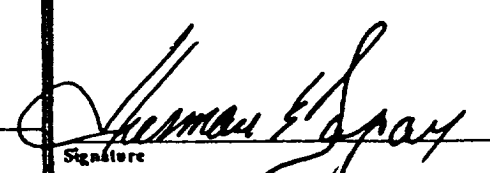
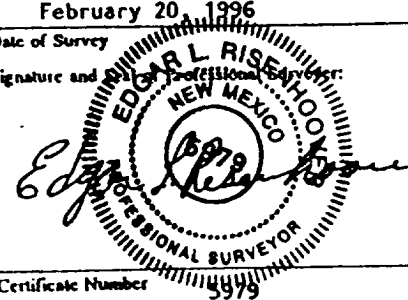
10 Surface Location

UL or lot no. M	Section 1	Township 23 N	Range 11 W	Lot Idn	Feet from the 330	North/South line South	Feet from the 1190	East/West line West	County San Juan
--------------------	--------------	------------------	---------------	---------	----------------------	---------------------------	-----------------------	------------------------	--------------------

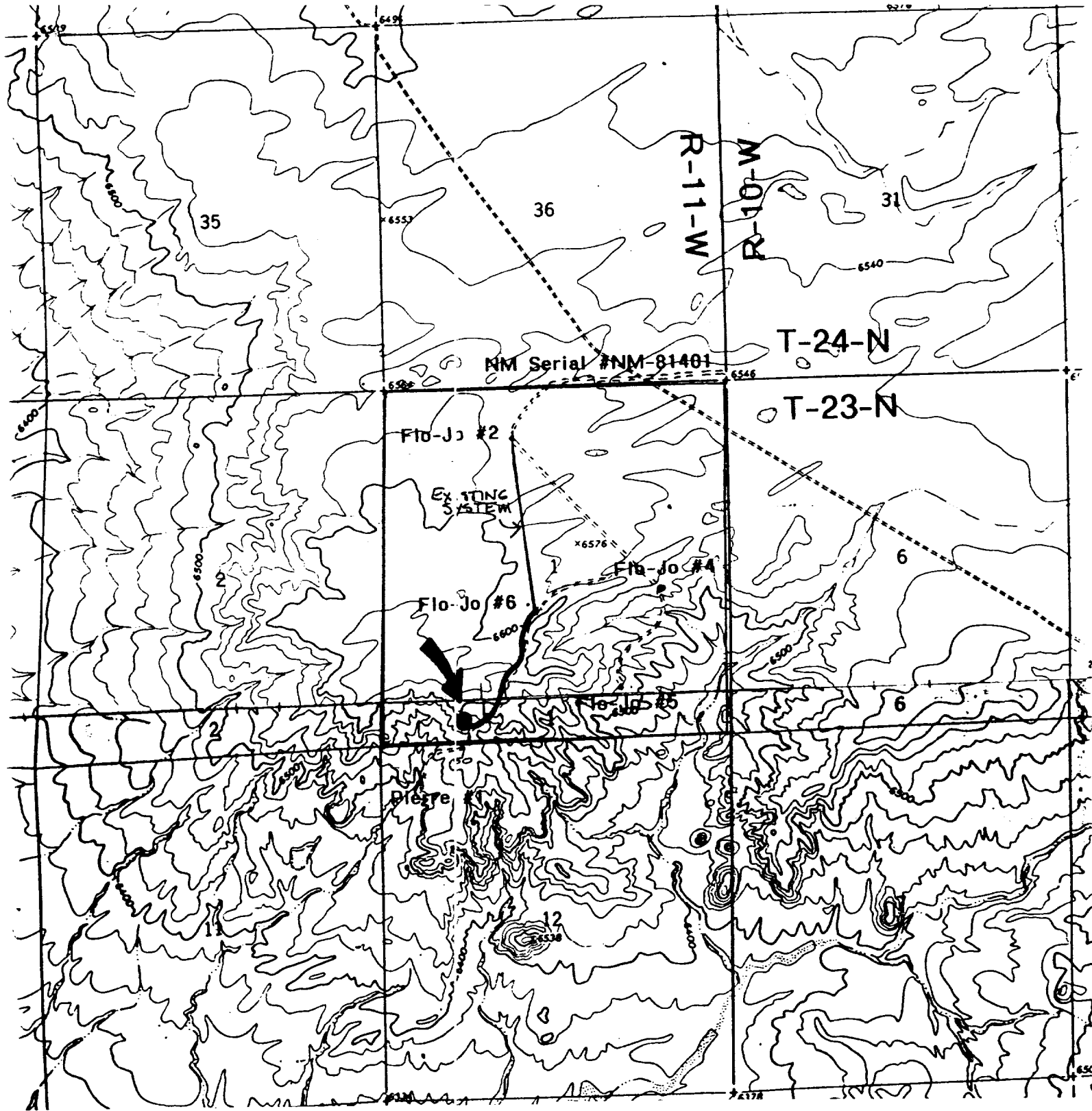
11 Bottom Hole Location If Different From Surface

UL or lot no.	Section	Township	Range	Lot Idn	Feet from the	North/South line	Feet from the	East/West line	County
Dedicated Acres 80		Joint or Infill		Consolidation Code		Order No.			

NO ALLOWABLE WILL BE ASSIGNED TO THIS COMPLETION UNTIL ALL INTERESTS HAVE BEEN CONSOLIDATED
OR A NON-STANDARD UNIT HAS BEEN APPROVED BY THE DIVISION

16				17 OPERATOR CERTIFICATION I hereby certify that the information contained herein is true and complete to the best of my knowledge and belief  Signature Sherman E. Dugan Printed Name Vice-President Title 3/4/96 Date	
Section 1					
Dugan Prod. NM 36952				18 SURVEYOR CERTIFICATION I hereby certify that the well location shown on this plat was plotted from field notes of actual surveys made by me or under my supervision, and that the same is true and correct to the best of my belief. February 20, 1996 Date of Survey Signature and Seal of Professional Surveyor:  Certificate Number 15979	
1190'				330'	

RECEIVED
APR 18 1996
OIL CON. DIV.
DIST. 3



Dugan Production Corp. - Flo Jo #7
Existing Roads Exhibit E

Vicinity of nearest town or reference pt.
 approx. 12 miles SW of Blanco Trading Post

Type of surface dirt

Conditions good

Other _____

Reference map: USGS map Blanco Trading
 Post, NM 1966

Planned Access Road(s)

Exhibit E

Width 20' Maximum grades 1/2%

Drainage design as required

Cuts & Fills as required

Surfacing material none

☒ Turnouts

☐ Culverts

☐ Gates

☐ Cattleguards

☐ Fence cuts

☐ Waterbars

☐ Access Road &
 Pipeline

Access road(s) do / do not cross Fed / Ind land

No new access road required.