

Submit 3 Copies
to Appropriate
District Office

State of New Mexico
Energy, Minerals and Natural Resources Department

Form C-103
Revised 1-1-89

DISTRICT I
P.O. Box 1980, Hobbs, NM 88240

DISTRICT II
P.O. Drawer DD, Artesia, NM 88210

DISTRICT III
1000 Rio Brazos Rd., Aztec, NM 87410

OIL CONSERVATION DIVISION
P.O. Box 2088
Santa Fe, New Mexico 87504-2088

WELL API NO. 30-039-05463
5. Indicate Type of Lease STATE <input checked="" type="checkbox"/> FEE <input type="checkbox"/>
6. State Oil & Gas Lease No. E-1207-1
7. Lease Name or Unit Agreement Name NCRA State (007822)
8. Well No. 3
9. Pool name or Wildcat Devi's Fork Gallup (17610)
10. Elevation (Show whether DF, RKB, RT, GR, etc.) 6819' GL

SUNDRY NOTICES AND REPORTS ON WELLS
(DO NOT USE THIS FORM FOR PROPOSALS TO DRILL OR TO DEEPEN OR PLUG BACK TO A
DIFFERENT RESERVOIR. USE "APPLICATION FOR PERMIT"
(FORM C-101) FOR SUCH PROPOSALS.)

1. Type of Well: OIL WELL <input checked="" type="checkbox"/> GAS WELL <input type="checkbox"/> OTHER <input type="checkbox"/>	2. Name of Operator Merrion Oil & Gas Corporation (014634)
3. Address of Operator 610 Reilly Avenue, Farmington, NM 87401-2634	4. Well Location Unit Letter L : 990 Feet From The west Line and 1650 Feet From The south Line Section 16 Township 24N Range 6W NMPM Rio Arriba County
11. Check Appropriate Box to Indicate Nature of Notice, Report, or Other Data	

NOTICE OF INTENTION TO:

PERFORM REMEDIAL WORK ☐ PLUG AND ABANDON ☒
TEMPORARILY ABANDON ☐ CHANGE PLANS ☐
PULL OR ALTER CASING ☐
OTHER: ☐

SUBSEQUENT REPORT OF:

REMEDIAL WORK ☐ ALTERING CASING ☐
COMMENCE DRILLING OPNS. ☐ PLUG AND ABANDONMENT ☐
CASING TEST AND CEMENT JOB ☐
OTHER: ☐

12. Describe Proposed or Completed Operations (Clearly state all pertinent details, and give pertinent dates, including estimated date of starting any proposed work) SEE RULE 1103.

Merrion Oil & Gas Corporation proposes to Plug & Abandon the above referenced well
as per the attached procedure.

RECEIVED
FEB 25 1998
OIL CON. DIV.
DIST. 3

I hereby certify that the information above is true and complete to the best of my knowledge and belief.

SIGNATURE Connie Dinning TITLE Contract Engineer DATE 2/25/98
TYPE OR PRINT NAME TELEPHONE NO.

(This space for State Use)

APPROVED BY Johnny Robinson TITLE DEPUTY OIL & GAS INSPECTOR, DIST. 3 DATE FEB 25 1998
CONDITIONS OF APPROVAL, IF ANY:

* Prior to 3-31-98

NOTIFY AZTEC OCD
IN TIME TO WITNESS P+A

PLUG & ABANDONMENT PROCEDURE

11-12-97

NCRA State #3

Devils Fork Gallup/Mesaverde
990' FWL and 1650' FSL / SW, Section 16, T-24-N, R-6-W
Rio Arriba Co., New Mexico

Note: All cement volumes use 100% excess outside pipe and 50' excess inside pipe. The stabilizing wellbore fluid will be 8.3 ppg, sufficient to balance all exposed formation pressures.

1. Install and test location rig anchors. Prepare blow pit. Comply with all NMOCD, BLM, and Merriam safety regulations. MOL and RU daylight pulling unit. NU relief line. Blow down well and kill with water as necessary.
3. Unseat pump then reseal and pressure test tubing to 1000#. TOH and LD rods and pump. ND wellhead and NU BOP, test BOP. TOH and tally 188 joints 2-3/8" tubing; 5801'. Visually inspect the tubing and if necessary LD and use a tubing workstring. Round-trip 4-1/2" gauge ring to 4491'.
4. **Plug #1 (Gallup perforations and top, 5796' - 5336'):** TIH with plugging sub on tubing to 5796' or as deep as possible. Pump 30 bbls water down tubing. Mix 53 sxs Class B cement (50% excess, long plug) and spot a plug to fill the Gallup perforations. TOH above cement, WOC. Tag cement.
5. **Plug #2 (Mesaverde perforations, 4491' - 4391'):** Set 4-1/2" wireline CIBP at 4491'. TIH with open ended tubing and tag CIBP. Load casing with water and pressure test to 500#. If casing does not test, then spot or tag subsequent plugs as appropriate. Mix 12 sxs Class B cement and spot a balanced plug above the CIBP to isolate the Mesaverde perforations. TOH to 3829'.
6. **Plug #3 (Mesaverde top, 3829' - 3729'):** Mix 12 sxs Class B cement and spot a balanced plug to cover then Mesaverde top. TOH to 2332'.
7. **Plug #4 (Pictured Cliffs top, 2332' - 2232'):** Mix 12 sxs Class B cement and spot a balanced plug to cover Pictured Cliffs top. POH with tubing.
8. **Plug #5 (Fruitland top, 1877' - 1777'):** Perforate 3 HSC squeeze holes at 1877'. If casing tested, establish rate into squeeze holes. Set a 4-1/2" cement retainer at 1827' and establish rate into squeeze holes. Mix and pump 51 sxs Class B cement, squeeze 39 sxs outside the casing and leave 12 sxs inside to cover Fruitland top. POH with tubing.
9. **Plug #6 (Kirtland and Ojo Alamo tops, 1398' - 1124'):** Perforate 3 HSC squeeze holes at 1398'. Set 4-1/2" cement retainer at 1348'. Establish rate into squeeze holes. Mix 131 sxs Class B cement, squeeze 106 sxs outside 4-1/2" casing from 1398' to 1124' and leave 25 sxs inside casing to cover Ojo Alamo top. POH and LD tubing.
10. **Plug #7 (8-5/8" Casing Shoe at 204'):** Perforate 2 squeeze holes at 254'. Establish circulation out bradenhead valve. Mix and pump approximately 75 sxs Class B cement down 4-1/2" casing, circulate good cement out bradenhead valve. Shut in well and WOC.
11. ND BOP and cut off casing below surface. Install P&A marker with cement to comply with regulations. RD, Move off location, cut off anchors and restore location.

NCRA State #3

Proposed P&A
Devils Fork Gallup/ Mesaverde

SW Section 16, T-24-N, R-6-W, Rio Arriba County, NM

Today's Date: 11-12-97
Spud: 10-6-62
Completed: 11-6-62
Re-Comp: Jun '68
Elev: 6819' GL

Plug #7 254' - Surface
Cmt with 75 sxs Class B

8-5/8" 24# H-40 Csg set @ 204'
178 cf cement (Circulated to Surface)

Perforate @ 254'

Top of Cement Unknown

Csg holes @ 656' - 650. Cmt with 150 sxs ('84)
Lost circulation, dild cmt 500' to 1510' in csg.

Plug #6 1398' - 1124'
Cmt with 131 sxs Class B,
106 sxs outside casing
and 25 sxs inside.

Cmt Retainer @ 1348'

Perforate @ 1398'

Cmt Retainer @ 1827' **Plug #5 1877' - 1777'**
Cmt with 51 sxs Class B,
39 sxs outside casing
and 12 sxs inside.

Csg holes @ 2255' - 2225' Cmt w/35
sxs ('81)

TOC @ 2243' (Calc, 75%)

Plug #4 2332' - 2232'
Cmt with 12 sxs Class B

DV Tool @ 2451'
Cmt w/ 50 sxs (63 cf)

Perfs 3152' - 3239'; Sqzd with 50 sxs ('68)
Csg holes 3833' - 3893' Cmt w/230 sxs ('84)
Sqz holes @ 3012', Cmt w/430 sxs ('68)

Plug #3 3829' - 3729'
Cmt with 12 sxs Class B
Mesaverde Perforations:
3876' - 88', sqz w/ 50 sxs ('68)
Sqz holes @ 4175', Cmt w/380 sxs ('68)

Set CIBP @ 4491'

Plug #2 4491' - 4391'
Cmt with 12 sxs Class B
Mesaverde Perforations:
4541' - 47' ('68)

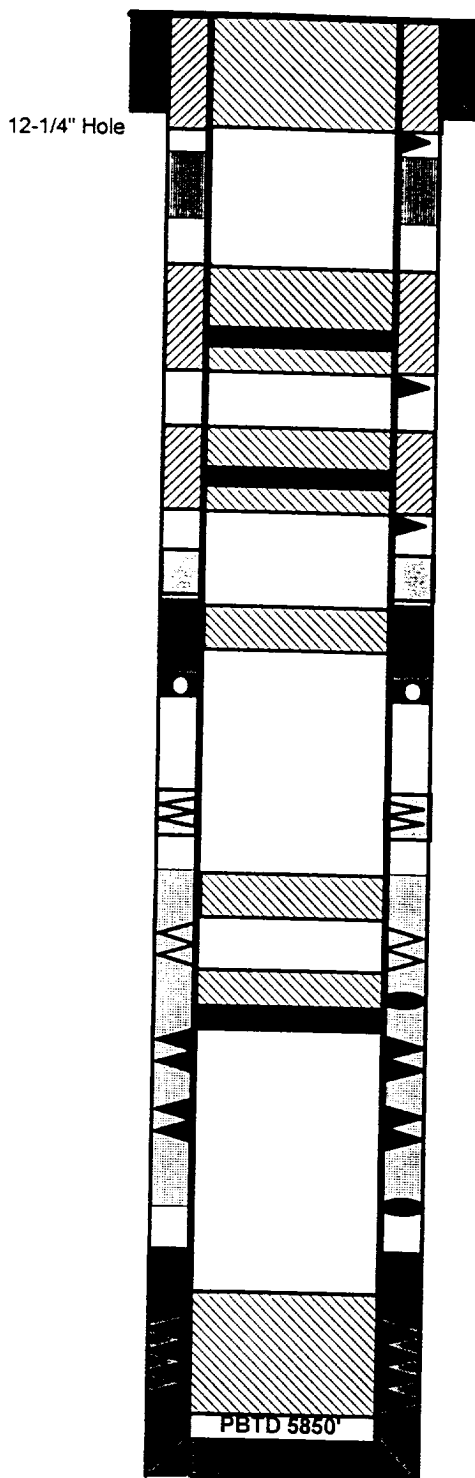
Mesaverde Perforations:
4623' - 29' ('68)

Sqz holes @ 4800', Cmt w/175 sxs ('68)

TOC @ 5373' (Calc, 75%)

Plug #1 5796' - 5336'
Cmt with 53 sxs Class B,
(50% excess, long plug)
Gallup Perforations:
5774' - 5796'

4-1/2" 9.5# J-55 Casing set @ 5871'
Cmt with 120 sxs (151 cf)



Ojo Alamo @ 1174'

Kirtland @ 1348'

Fruitland @ 1827'

Pictured Cliffs @ 2282'

Mesaverde @ 3779'

Gallup @ 5386'

7-7/8" Hole

TD 5871'