

UNITED STATES
DEPARTMENT OF THE INTERIOR
GEOLOGICAL SURVEY

SUNDRY NOTICES AND REPORTS ON WELLS

(Do not use this form for proposals to drill or to deepen or plug back to a different reservoir. Use Form 9-331-C for such proposals.)

1. oil ☒ well gas ☐ well other ☐

2. NAME OF OPERATOR
J. Gregory Merrion & Robert L. Bayless

3. ADDRESS OF OPERATOR
P.O. Box 507, Farmington, NM 87401

4. LOCATION OF WELL (REPORT LOCATION CLEARLY. See space 17 below.)
AT SURFACE: 805' FSL & 530' FWL
AT TOP PROD. INTERVAL: same
AT TOTAL DEPTH: same

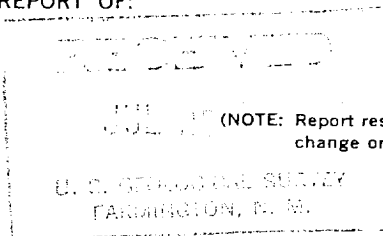
16. CHECK APPROPRIATE BOX TO INDICATE NATURE OF NOTICE, REPORT, OR OTHER DATA

REQUEST FOR APPROVAL TO:

TEST WATER SHUT-OFF ☐
FRACTURE TREAT ☐
SHOOT OR ACIDIZE ☐
REPAIR WELL ☐
PULL OR ALTER CASING ☐
MULTIPLE COMPLETE ☐
CHANGE ZONES ☐
ABANDON* ☐
(other) ☐

SUBSEQUENT REPORT OF:

☐
☒
☒
☐
☐
☐
☒
☐



5. LEASE
SF-078877

6. IF INDIAN, ALLOTTEE OR TRIBE NAME

7. UNIT AGREEMENT NAME
Canyon Largo Unit

8. FARM OR LEASE NAME
Canyon Largo Unit

9. WELL NO.
125

10. FIELD OR WILDCAT NAME
Devils Fork Mesa Verde

11. SEC., T., R., M., OR BLK. AND SURVEY OR AREA
Sec. 9, T24N, R6W

12. COUNTY OR PARISH
Rio Arriba

13. STATE
NM

14. API NO.

15. ELEVATIONS (SHOW DF, KDB, AND WD)
6530' GL, 6540' KB

17. DESCRIBE PROPOSED OR COMPLETED OPERATIONS (Clearly state all pertinent details, and give pertinent dates, including estimated date of starting any proposed work. If well is directionally drilled, give subsurface locations and measured and true vertical depths for all markers and zones pertinent to this work.)*

See attached daily report.



Subsurface Safety Valve: Manu. and Type _____ Set @ _____ Ft.

18. I hereby certify that the foregoing is true and correct

SIGNED [Signature] TITLE Engineer DATE July 24, 1981

(This space for Federal or State office use)

APPROVED BY _____ TITLE _____ DATE ACCEPTED FOR RECORD
CONDITIONS OF APPROVAL, IF ANY:

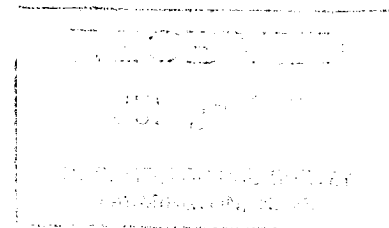
AUG 13 1981

*See Instructions on Reverse Side

NMOCC

FARMINGTON DISTRICT
BY [Signature]

CANYON LARGO UNIT # 125
Well History
SW/SW Section 9, T24N, R6W
Rio Arriba County, New Mexico
SF-078877



- 06-26-80 Move in Flint Rig. (SSD)
- 06-27-80 Rig up. Load hole and pressure test casing to 1000 PSIG for 10 minutes. Held okay. Trip to PBTB @ 5477' KB by tally. Trip out. SDOWE (SSD)
- 06-28-80 Repair tongs. S.D. (SSD)
- 06-30-80 Rig up McCullough. Unable to log due to mechanical problems on logging unit. SDON. (SSD)
- 07-1-80 Rig up McCullough. Ran casing inspection log from 4550 to surface. Casing in good shape. McCullough unable to run correlation log or perforate due electrical malfunctions. Released McCullough. Round tripped tubing and hydrotreated. SDON. (SSD)
- 07-02-80 Rig up Blue Jet. Ran correlation log from 4550 to 3550. Shot 4 squeeze holes @4410 ft. and 4 shots @ 3570. Run in with retainer & collar locator. Unable to go below 985' KB. Trip out. Found collar locator broken. Left small steel pieces in hole. Trip in with bit & scraper to 1040 ft. Trip out. Trip in with new collar locator and retainer. Set retainer @ 4400 ft. KB. Rig up Dowell. Attempted to break circulation conventionally. Plugged off. Tried to reverse, plugged off. Tried conventional and established circulation @ 2.5 BPM and 1800 PSIG pressure. Acidized open hole with 250 gals. MR-1 acid. Mixed 309 sx class 'H' with 1% D-60 F.L.A. Lost circulation. Displaced cement to the retainer. Pulled tubing and reversed clean to check for cement in the casing. Did not find cement. Spotted 20 sx class 'H' across upper perms @ 3570, from 3613 to 3300 ft. Pulled tubing to 3236 ft and reversed clean. Squeezed upper perms with 1 Bbl cement @ 1000 PSIG final squeeze pressure. Shut-in. WOCT. (SSD)
- 07-03-80 Trip out with tubing. Pick up bit and casing scraper. Trip in and tagged cement @ 3325 ft. Drilled out cement. Reversed hole clean. Press tested to 1000 PSIG, OK. SDON (SSD)
- 07-07-80 Tripped out of hole with bit and casing scraper. Rigged up Blue Jet and ran Cement Bond log 4389-3500. Perforated 4339-4349 with 2 holes per foot. Ran Model 'R' packer and tubing. Reversed hole clean with water. Spotted 46 BO to annulus and 500 gal 15% HCL with iron stabilizer and surfactant to bottom of tubing. Set packer at 4317. Treated perms 4339-49 with acid at 3-1/2 BPM and 2500 psi; ISDP - 1300, bled to 1200 in ten minutes. Swabbed down to seating nipple and then made one run recovering 50' of acid water with slight oil cut. No show of formation gas. (JGM)
- 07-08-80 Found 1000 ft. of fluid in the hole. Swabbed down. Received slightly oil cut acid water. Ran swab remainder of day once each hour. Well gassing steady @ estimated 15 MCF/day rate. (See swab report in well file). (SSD)

Merrion & Bayless
Canyon Largo Unit #125
Well History
Page 2

07-09-80 Rigged up Western Co. Fraced Point Lookout w/ 17,000 lbs. 40/60 sand and 370 bbls. Maxi-0-74 gelled lease crude. Avg. rate 6 BPM, avg. treating pressure 3600 PSIG, ISDP 1650. Final shut in was 1600 PSIG in 10 minutes. Shut in to allow gel to break. (SSD)

07-10-80 Flowed well back to frac tank for four hours. Rig up to swab, swabbed down and established rate of 3/4 bbls of oil every 15 minutes. SDON. (SSD)

07-11-80 Ran swab twice, rig down swab. Released packer and trip out w/ tubing. Lay down packer. Rerun tubing w/ mud anchor, seating nipple, perforated nipple. (SSD)

07-12-80 Finished running production tubing and landed @ 4384' KB. SDOWE. (SSD)

07-14-80 Ran rods and pump. Hung on to pump. Release rig. (FIZZ)

12-01-80 Rig up Flint Engineering. Pull rods and tubing. SDON. (JCA)

12-02-80 Trip in w/ Baker model 'G' packer to 1600 ft. Swab test casing. Swabbed down in 6 runs. Trip out w/ packer. SDON. (JCA)

12-03-80 Trip in w/ packer to 4300 ft. Set in compression. Pressure tested to 1500#. Held steady for 15 minutes. Trip out with packer. Lay down perforated nipple. Run in w/ packer to swab test perforated interval; made 7 runs. Swabbed down to seating nipple in 5. SDON. (JCA)

12-04-80 Swab, test perforated interval. Making 700' of fluid per hour. 95% water. Trip out w/ packer. (SDON) (JCA)

12-05-80 Trip in w/ tubing. Run pump and rods. Rig down. (JCA)

07-02-81 M.I.R.U. Bayless Drilling Co. Rig #3. Laying down rods. SDON. (SSD)

07-03-81 Finish laying down rods. Move off. (SSD)