

UNITED STATES
DEPARTMENT OF THE INTERIOR
BUREAU OF LAND MANAGEMENT

Sundry Notices and Reports on Wells

1. Type of Well
GAS

2. Name of Operator
Meridian Oil Inc.

3. Address & Phone No. of Operator
Box 4289, Farmington, NM 87499 (505) 326-9700

4. Location of Well, Footage, Sec, T, R, M.
965'N, 1840'W Sec.12, T-24-N, R-6-W, NMPM

5. Lease Number
SF-078877

6. If Indian, All.or
Tribe Name

7. Unit Agreement Name
Canyon Largo Unit

8. Well Name & Number
Canyon Largo Unit #73

9. API Well No.

10. Field and Pool
Ballard Pictured Cliffs

11. County and State
Rio Arriba County, NM

12. CHECK APPROPRIATE BOX TO INDICATE NATURE OF NOTICE, REPORT, OTHER DATA

Type of Submission

☒ Notice of Intent

☐ Subsequent Report

☐ Final Abandonment

Type of Action

☒ Abandonment

☐ Recompletion

☐ Plugging Back

☐ Casing Repair

☐ Altering Casing

☐ Other

☐ Change of Plans

☐ New Construction

☐ Non-Routine Fracturing

☐ Water Shut Off

☐ Conversion to Injection

13. Describe Proposed or Completed Operations

It is proposed to plug and abandon the subject well per the attached procedure and wellbore schematic.

RECEIVED
NOV 7 1991.

OIL CON. DIV.
DIST. 3

SEE ATTACHED FOR
CONDITIONS OF APPROVAL

RECEIVED
BLM
NOV -1 11:26
SANDIA

14. I hereby certify that the foregoing is true and correct

Signed David L. Smith (LS) Title Regulatory Affairs Date 10-31-91

APPROVED
AS AMENDED

(This space for Federal or State office use)

APPROVED BY _____ TITLE _____
CONDITION OF APPROVAL, IF ANY:

NOV 14 1991
DATE
AREA MANAGER

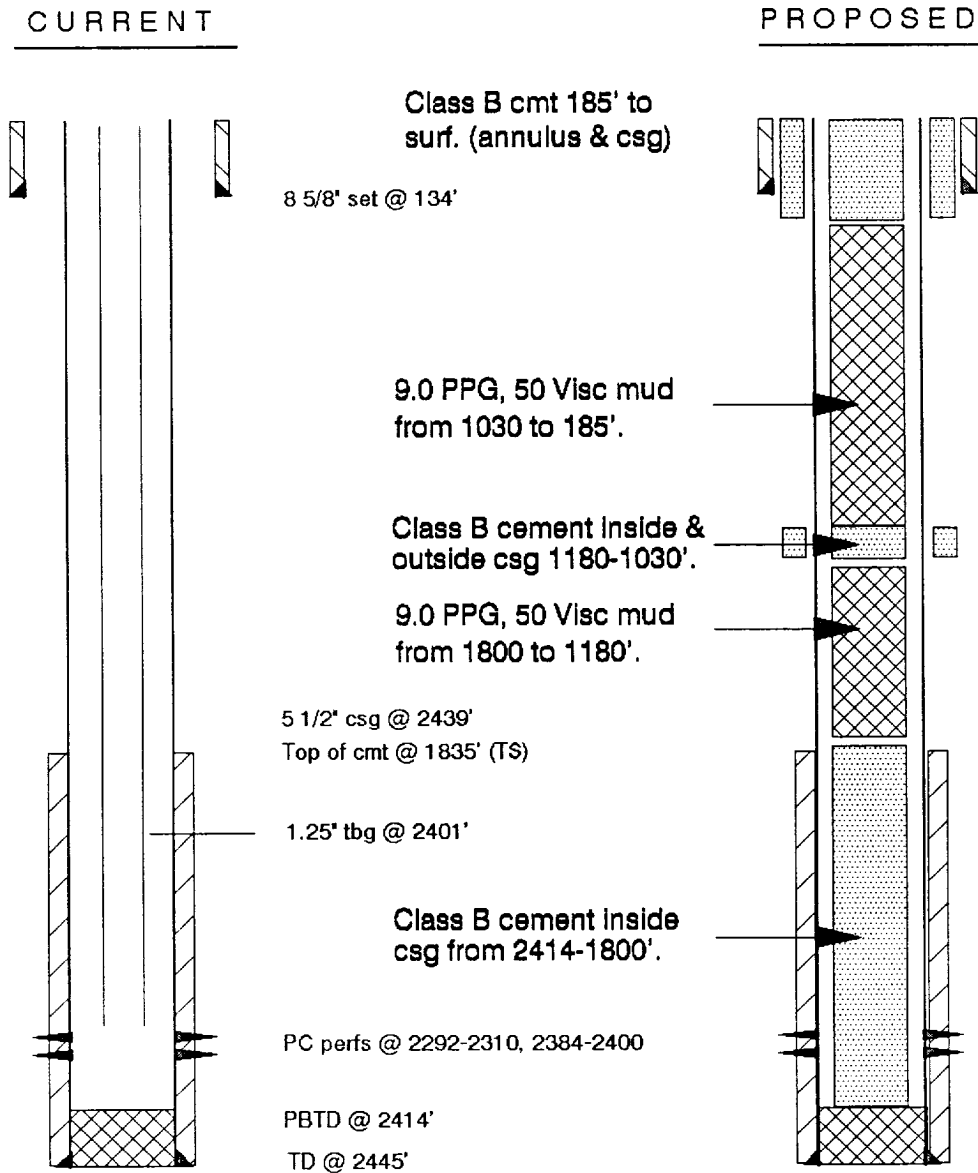
**Plug and Abandonment Procedure
Canyon Largo Unit #73**

Note : Notify Mark Kelly with the Farmington BLM office (326-6201) at least 24 hours prior to commencement of plugging operations.

1. MIRU Bedford rig on location and blow down well, kill with water if needed. ND WH and NU BOP assembly.
2. Pump down tubing to establish circulation.
3. Mix and place Class B neat cement (15.6 ppg, 1.18 ft³/sx yield, 5.2 gal of water/sx) from PBTD (2414') to 1800' (top of the Ojo Alamo at 1805'). WOC and tag top of cement with tubing. Circulate the hole with 9.0 ppg/50 viscosity mud.
4. Perforate 2 squeeze holes at 1180'. TIH with tubing open ended to 1150' and establish an injection rate out the squeeze holes with the bradenhead valve open, then pump 47 sxs (9.9 bbls) of cement into the casing annulus. Close the bradenhead valve and spot 25 sxs (5.3 bbl) of cement in the casing. TOOH with the tubing. This will cover 50' above and 100' below the freshwater sand top at 1080' with 100% excess behind pipe and 50% excess in the pipe. WOC and tag cement top. TOOH
5. Perforate two squeeze holes at 185'. Circulate 75 sacks of cement on the inside and outside of the casing from 185' to surface.
6. Cut off wellhead and set abandoned well marker.

Canyon Largo Unit #73
Unit C Sect 12-T24N-R6W
Rio Arriba County, New Mexico

Wellbore Schematic



UNITED STATES DEPARTMENT OF THE INTERIOR

BUREAU OF LAND MANAGEMENT
FARMINGTON RESOURCE AREA
1235 LA PLATA HIGHWAY
FARMINGTON, NEW MEXICO 87401

Attachment to Notice of

Re: Permanent Abandonment

Intention to Abandon

Well: 73 Canyon Largo Unit

CONDITIONS OF APPROVAL

1. Plugging operations authorized are subject to the attached "General Requirements for Permanent Abandonment of Wells on Federal Leases."
2. Mark Kelly with the Farmington Office is to be notified at least 24 hours before the plugging operations commence (505) 326-6201.
3. Blowout prevention equipment is required.
4. The following modifications to your plugging program are to be made (when applicable):

Bring Ojo Alamo plug up to 1755

Office Hours: 7:45 a.m. to 4:30 p.m.

GENERAL REQUIREMENTS FOR
PERMANENT ABANDONMENT OF WELLS ON FEDERAL AND INDIAN LEASES
FARMINGTON RESOURCE AREA

1. Secure prior approval either on a Sundry Notice (Form 3160-5) or verbally from the Fluids Drilling & Production Section at this office before changing the approved plugging program.

2. Plugging equipment used shall have separate mixing and displacement pumps and a calibrated tank to assure proper displacement of plugs. The Operator is responsible for providing all measuring devices needed to assure proper measurement of materials being used.

3. A proper tank or pit will be used to contain all fluids pumped from the well during plugging operations. Unattended pits are to be fenced.

4. All cement plugs are to be placed through tubing (or drillpipe) and shall be a minimum of 100 feet in length with 50% excess inside casing or 100% excess when plug is set in open hole or squeezed into perforations. 15.6#/gal slurry weight is to be used when using class B neat cement or when CaCl_2 is used. Use the recommended slurry weight of other type cements when they are used (Class C, Pozzolan etc.).

~~5. Any cement plugs placed when well is not full of fluid, or when well may be taking fluid, (i.e. across perms-unless bridge plug or retainer is used, across bad csg., or fresh water formations) will be tagged (touched) after cement has set to verify proper location.~~

5a. Testing: The first plug below the surface plug shall generally be tested by either tagging the plug with the working pipe string, or pressuring to a minimum pump (surface) pressure of 1000 psig, with no more than a 10 percent drop during a 15-minute period (cased hole only). If the integrity of any other plug is questioned, it must be tested in the same manner. Also, any cement plug which is the only isolating medium for a fresh water interval or a zone containing a valuable mineral deposit should be tested by tagging with the drill string.

6. Mud must be placed between plugs. Plugging mud is to be made up with a minimum of 15 lbs/bbl of sodium bentonite, and a nonfermenting polymer. Minimum consistency of plugging mud must be 9 lbs/gal and with a minimum viscosity of 50 sec/qt. Fresh water is to be utilized for mixing mud.

7. Following the placement of a cement plug, the withdrawal rate for at least the length of the cement plug shall not exceed 30 ft/min, in order to minimize the contamination of the plug.

8. Within 30 days after plugging work is completed, file a Sundry Notice (Subsequent Report of Abandonment, Form 3160-5), in quintuplicate with Area Manager, Bureau of Land Management, 1235 La Plata Highway, Farmington, NM 87401. The report should give in detail the manner in which the plugging work was carried out, the extent (by depths) of cement plugs placed, and the size and location (by depths) of casing left in the well. Show date well was plugged.

9. All permanently abandoned wells are to be marked with a regulation marker (4" pipe extending 4' above the ground line) containing the information as specified in 43 CFR 3162.6(d). Unless otherwise approved.

10. After plugging work is completed the surface is to be rehabilitated in accord with instructions from the Fluids Surface Management Section of the Farmington Resource Area Office.

All above are minimum requirements. The period of liability under the bond of record will not be terminated until the lease is inspected and surface work approved.

Please advise this office when the well location is ready for final inspection.

Failure to comply with the above conditions of approval may result in an assessment for noncompliance and/or a Shut-in Order being issued pursuant to 43 CFR 3163.1.

You are further advised that any instructions, orders or decisions issued by the Bureau of Land Management are subject to administrative review pursuant to 43 CFR 3165.3 and appeal pursuant to 43 CFR 3165.4 and 43 CFR 4.700.