

UNITED STATES
DEPARTMENT OF THE INTERIOR
BUREAU OF LAND MANAGEMENT

APPLICATION FOR PERMIT TO DRILL, DEEPEN, OR PLUG BACK

RECEIVED
NOV 23 1990
OIL CON. DIV
DIST. 3

1a. TYPE OF WORK
PLUG BACK
1b. TYPE OF WELL
GAS

2. OPERATOR
Meridian Oil Inc.

3. ADDRESS & PHONE NO. OF OPERATOR
P.O. BOX 4289
FARMINGTON, NM 87499
(505) 326-9700

4. LOCATION OF WELL
890' FNL, 990' FWL

5. LEASE NUMBER
Jicarilla Apache Tribal Contract #126
6. IF INDIAN, ALL. OR TRIBE NAME
Jicarilla Apache

7. UNIT AGREEMENT NAME

8. FARM OR LEASE NAME
Jicarilla 126 S
9. WELL NO.
#5

10. FIELD, POOL, OR WILDCAT
BASIN FRUITLAND COAL
11. SEC. T. R. M OR BLK.
D Section 2, T24N, R04W

14. DISTANCE IN MILES FROM NEAREST TOWN

12. COUNTY
Rio Arriba
13. STATE
NM

15. DISTANCE FROM
PROPOSED LOCATION
TO NEAREST PROPERTY
OR LEASE LINE.

16. ACRES IN LEASE

17. ACRES ASSIGNED TO WELL
446.61

18. DISTANCE FROM
PROPOSED LOCATION
TO NEAREST WELL DR.
COMPL., OR APPLIED
FOR ON THIS LEASE.

19. PROPOSED DEPTH

20. ROTARY OR CABLE TOOLS

21. ELEVATIONS (DF, FT, GR, ETC.)
6909' GL

22. APPROX. DATE WORK WILL START

23. PROPOSED CASING AND CEMENTING PROGRAM

*SEE OPERATIONS PLAN

24. AUTHORIZED BY: [Signature] (CJS)
REGULATORY AFFAIRS

10-22-90
DATE

PERMIT NO. _____ APPROVAL DATE _____

APPROVED BY _____ TITLE _____ DATE _____

NOTE: THIS FORMAT IS ISSUED IN LIEU OF US BLM FORM 3160-3
(NO ADDITIONAL DIRT WORK WILL BE REQUIRED)

APPROVED
AS AMENDED

Held C-104 FOR NSL + NSPE
NMOCD

NOV 06 1990
[Signature]
AREA MANAGER

Submit to Appropriate
District Office
State Lease - 4 copies
Fee Lease - 3 copies

State of New Mexico
Energy, Minerals and Natural Resources Department

Form C-102
Revised 1-1-89

OIL CONSERVATION DIVISION
P.O. Box 2088
Santa Fe, New Mexico 87504-2088

DISTRICT I
P.O. Box 1980, Hobbs, NM 88240

DISTRICT II
P.O. Drawer DD, Artesia, NM 88210

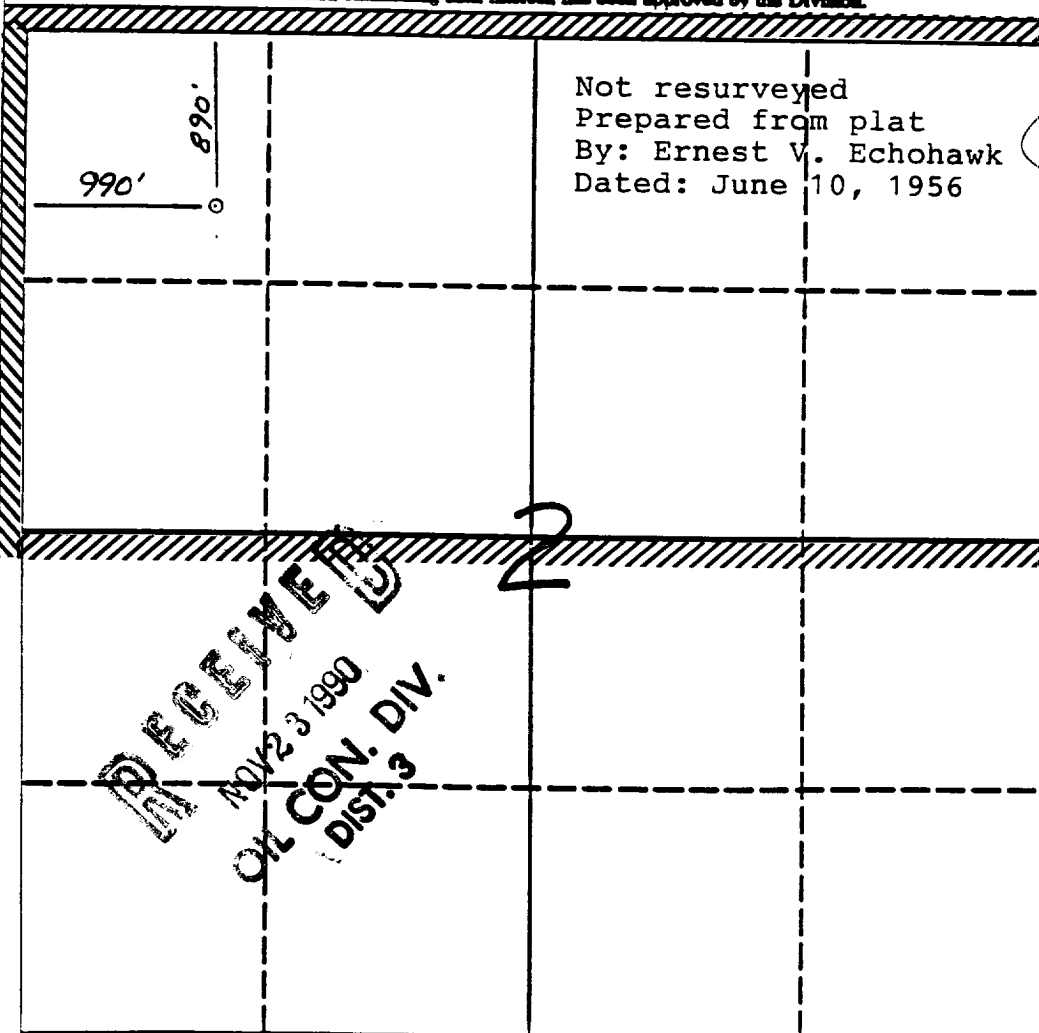
DISTRICT III
1000 Rio Brazos Rd., Aztec, NM 87410

WELL LOCATION AND ACREAGE DEDICATION PLAT

All Distances must be from the outer boundaries of the section

Operator Meridian Oil Inc.		Lease (Jic. Cont #126) Jicarilla 126 S		Well No. 5
Unit Letter D	Section 2	Township 24 North	Range 4 West	County NMPM Rio Arriba
Actual Footage Location of Well: 890 feet from the North line and 990 feet from the West line				
Ground level Elev. 6909'	Producing Formation Fruitland Coal	Pool Basin	Dedicated Acreage: 446.61 Acres	

1. Outline the acreage dedicated to the subject well by colored pencil or hatchure marks on the plat below.
2. If more than one lease is dedicated to the well, outline each and identify the ownership thereof (both as to working interest and royalty).
3. If more than one lease of different ownership is dedicated to the well, have the interest of all owners been consolidated by communitization, unitization, force-pooling, etc?
☐ Yes ☐ No If answer is "yes" type of consolidation _____
If answer is "no" list the owners and tract descriptions which have actually been consolidated. (Use reverse side of this form if necessary.)
No allowable will be assigned to the well until all interests have been consolidated (by communitization, unitization, forced-pooling, or otherwise) or until a non-standard unit, eliminating such interest, has been approved by the Division.



OPERATOR CERTIFICATION

I hereby certify that the information contained herein is true and complete to the best of my knowledge and belief.

Signature *Peggy Bradfield*

Printed Name
Peggy Bradfield

Position
Regulatory Affairs

Company
Meridian Oil Inc.

Date
10-22-90

SURVEYOR CERTIFICATION

I hereby certify that the well location shown on this plat was plotted from field notes of actual surveys made by me or under my supervision, and that the same is true and correct to the best of my knowledge and belief.
10-20-90

Date Surveyed

Signature *Neale C. Edwards*

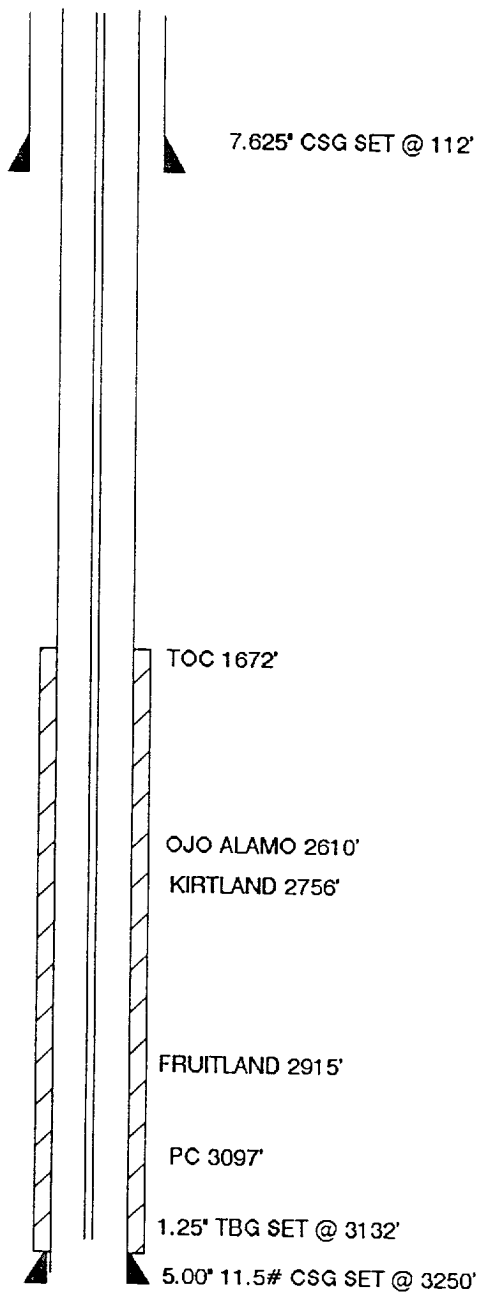
Professional Seal of
NEW MEXICO
6857
REGISTERED LAND SURVEYOR

Certificate No.
Neale C. Edwards

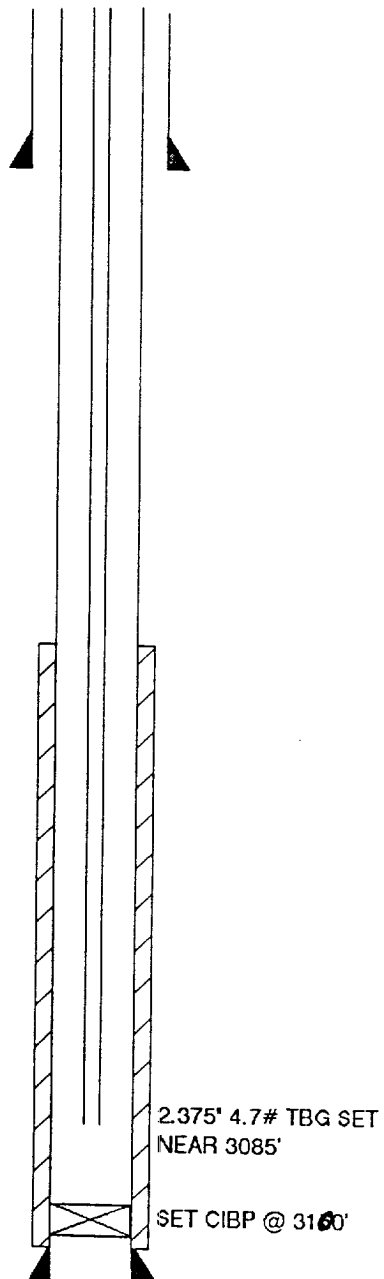
0 330 660 990 1320 1650 1980 2310 2640 2000 1500 1000 500 0

JICARILLA 126S #5 WELLBORE DIAGRAMS

BEFORE R/C



AFTER R/C

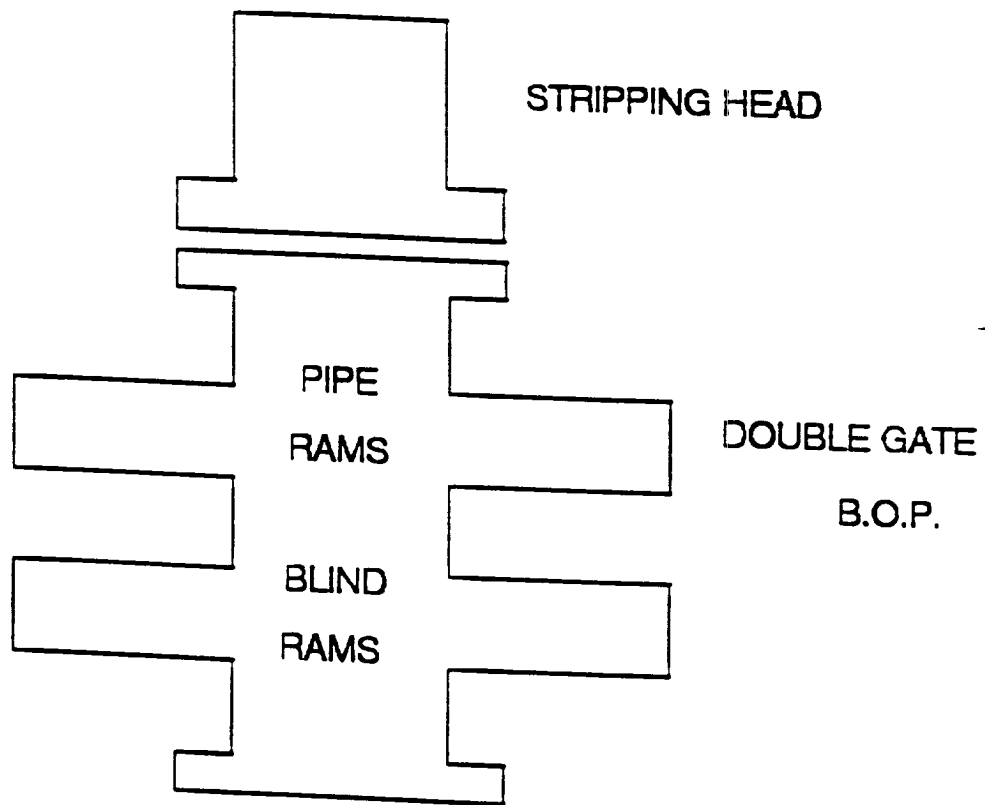


RECOMPLETION PROCEDURE
Jicarilla 126S #5

NO WORK TO BE PERFORMED OFF APPROVED WELLPAD

1. Prepare location for workover. Install or replace anchors as necessary.
2. MOL with workover rig, hold safety meeting, install safety signs and proper fire equipment at strategic points. Comply with all BLM, NMOCD, and MOI regulations.
3. Rig up blow lines, record tubing and casing pressures and blow well down. NU 6" 3000 psi BOP and test. Load hole with water. TOOH with 1.25" tubing.
4. PU 5" casing scraper and TIH with 2-3/8" 4.7# J-55 EUE tubing. CO to 3150'. TOOH.
5. RU wireline unit and set a 5 " CIBP @ 3100'. Pressure test casing to 1000 psi for 15 minutes.
6. Run logs.
7. Perforate coal. Perforations to be picked from log.
8. TIH with 2-3/8" tubing and swab wellbore dry. Check well for gas flow. Evaluate well overnight. Check well for buildup pressure and gas flow. Evaluate for fracture stimulation.
9. TIH with 2-3/8" tubing and clean out to 3100'.
10. When well is clean, land 2-3/8" tubing with a common pump seating nipple one joint off bottom. Land tubing near 3135'. Swab well in. Record final 30, 45 and 60 minute gauges on morning report. ND BOP. NU tree. RD and release rig.
11. Shut well in for pressure build up. Obtain gas and water sample for analysis.

WORKOVER / RECOMPLETION B.O.P. SCHEMATIC



MINIMUM: 6" 2000 PSI DOUBLE GATE B.O.P.
MAXIMUM ANTICIPATED SHUT-IN WELLHEAD
PRESSURE IS LESS THAN 2000 PSI