

OIL CONSERVATION DIVISION

2040 S. Pacheco
Santa Fe, New Mexico 87505-6429

DISTRICT I

P.O. Box 1980, Hobbs, NM 88240

DISTRICT II

P.O. Box Drawer DD, Artesia, NM 88210

DISTRICT III

1000 Rio Brazos Rd., Aztec, NM 87410

WELL API NO.

3003905680

5. Indicate Type of Lease

STATE ☒

FEE ☐

6. State Oil / Gas Lease No.

E-1207

7. Lease Name or Unit Agreement Name

FARMING E

8. Well No.

2

9. Pool Name or Wildcat

DEVILS FORK GALLUP (ASSOCIATED)

SUNDRY NOTICES AND REPORTS ON WELLS
(DO NOT USE THIS FORM FOR PROPOSALS TO DRILL OR TO DEEPEN OR PLUG BACK TO
DIFFERENT RESERVOIR. USE "APPLICATION FOR PERMIT
(FORM C-101) FOR SUCH PROPOSALS.

1. Type of Well: OIL WELL ☐ GAS WELL ☒ OTHER

2. Name of Operator
FOUR STAR OIL AND GAS COMPANY

3. Address of Operator 3300 N. Butler Ave., Suite 100 Farmington NM 87401

4. Well Location
Unit Letter B : 764 Feet From The NORTH Line and 1870 Feet From The EAST Line
Section 02 Township T24N Range R06W NMPM RIO ARRIBA COUNTY

10. Elevation (Show whether DF, RKB, RT, GR, etc.) 6492

11. Check Appropriate Box to Indicate Nature of Notice, Report, or Other Data

NOTICE OF INTENTION TO:

PERFORM REMEDIAL WORK ☐

TEMPORARILY ABANDON ☐

PULL OR ALTER CASING ☐

OTHER: ☐

PLUG AND ABANDON ☒

CHANGE PLANS ☐

☒

☐

☐

☐

SUBSEQUENT REPORT OF:

REMEDIAL WORK ☐

COMMENCE DRILLING OPERATION ☐

CASING TEST AND CEMENT JOB ☐

OTHER: ☐

ALTERING CASING ☐

PLUG AND ABANDONMENT ☐

☐

☐

12. Describe Proposed or Completed Operations (Clearly state all pertinent details, and give pertinent dates, including estimated date of starting any proposed work) SEE RULE 1103.

FOUR STAR OIL & GAS CO. PLANS TO PLUG AND ABANDON THE SUBJECT WELL. PLEASE REFER TO ATTACHED PROCEDURE AND WELLBORE DIAGRAMS FOR PERTINENT DETAILS.

RECEIVED
JUL 24 1997

OIL CON. DIV.
DIST. 3

I hereby certify that the information above is true and complete to the best of my knowledge and belief.

SIGNATURE Rached Hindi TITLE Senior Engineer

DATE 7/16/97

TYPE OR PRINT NAME Rached Hindi

Telephone No. (505) 325-4397

(This space for State Use)

APPROVED BY Johnny Robinson TITLE DEPUTY OIL & GAS INSPECTOR, DIST. #3

DATE JUL 24 1997

CONDITIONS OF APPROVAL, IF ANY: See p. 10 to 12 of 2500

NOTIFY AZTEC OCD
IN TIME TO WITNESS See p. 10 to 12 of 2500

FARMING E # 2

PLUG AND ABANDONMENT PROCEDURE

1. Notify the Aztec NMOC District office at least 24 hours before plugging operations commence (state lease). Test rig anchors and replace as necessary.
2. MIRU well service unit. Install BOP. POOH with 2-3/8" tbg.
3. RIH with 5-1/2" CIBP on tbg or wireline. Set CIBP at 5515'. Fill wellbore with lease produced water. RU Dowell. Spot 100 feet, (5515'-5415', 20 sacks) class G neat cement plug on top of CIBP. POOH. (Gallup plug).
4. RU wireline. Perforate 2 squeeze holes at 3874'. RIH with 5-1/2" cement retainer on tbg. Set retainer at 3824'. Squeeze 56 sacks class G cement perfs. Sting out of retainer and spot 50 ft (12 sacks) sacks on top of retainer. Pull up 2 joints and reverse out excess cement from tbg. POOH. (Mesaverde plug).
5. TIH with tubing and spot a 100' (20 sacks) balance class G cement plug from 3162' to 3062'. POOH. (Chacra plug).
6. TIH with tubing and spot a 100' (20 sacks) balance class G cement plug from 2363' to 2263'. POOH. (Pictured Cliffs plug).
7. Perforate 2 squeeze holes at 2035'. RIH with 5-1/2" cement retainer on tbg. Set retainer at 1985'. Squeeze 56 sacks class G cement into perfs. Sting out of retainer and spot 50 ft (6 sacks) on top of retainer (1885'-1935'). Pull up 2 joints and reverse out excess cement from tbg. POOH. (Fruitland plug).
8. Perforate 2 squeeze holes at 1920'. RIH with 5-1/2" cement retainer on tbg. Set retainer at 1870'. Squeeze 56 sacks class G cement into perfs. Sting out of retainer and spot 50 ft (12 sacks) on top of retainer (1820'-1870'). Pull up 2 joints and reverse out excess cement from tbg. POOH. (Kirtland plug).
9. Perforate 2 squeeze holes at 1575'. RIH with 5-1/2" cement retainer on tbg. Set retainer at 1525'. Squeeze 56 sacks class G cement into perfs. Sting out of retainer and spot 50 ft (12 sacks) on top of retainer (1475'-1525'). Pull up 2 joints and reverse out excess cement from tbg. POOH. (Ajo Alamo plug).

FARMING E # 2

Page 2

10. Perforate 2 squeeze holes at 356'. Open bradenhead valve. Pump into squeeze holes with water and establish circulation to surface if possible. Pump 225 sacks class G cement circulating cement to surface if possible. Leave casing full of cement to surface. 170 sacks to circulate outside casing and 55 sacks to fill inside casing from 356'. (Surface plug).
11. Cut off wellhead. Erect P&A marker. Remove rig anchors or cut off at least 2' below ground level. Clear and clean location.
12. Notify EA to file subsequent sundry.

Capacities:

5-1/2", 15.5# csg	0.1336 ft ³ /ft	(0.0238 Bbls/ft)
5-1/2" csg x 8-3/4" hole	0.2525 ft ³ /ft	(0.0450 Bbls/ft)
5-1/2" csg x 10-3/4", 32.75# csg	0.4016 ft ³ /ft	(0.0715 Bbls/ft)
2-3/8", 4.7# tbg	0.02171 ft ³ /ft	(0.00387 Bbls/ft)
2-3/8" tbg x 5-1/2", 15.5# csg	0.1029 ft ³ /ft	(0.0183 Bbls/ft)
Class G Neat Cement	1.15 ft ³ /sack	



FARMING E No. 2 CURRENT COMPLETION

API NUMBER:
30-039-05680

LOCATION:
Unit B, 764' FNL & 1870' FEL
NW/NE, Sec. 2, T24N, R6W
Rio Arriba County

SPUD DATE: 12/16/58
COMPL. DATE: 1/17/59
ELEVATION: 6503'

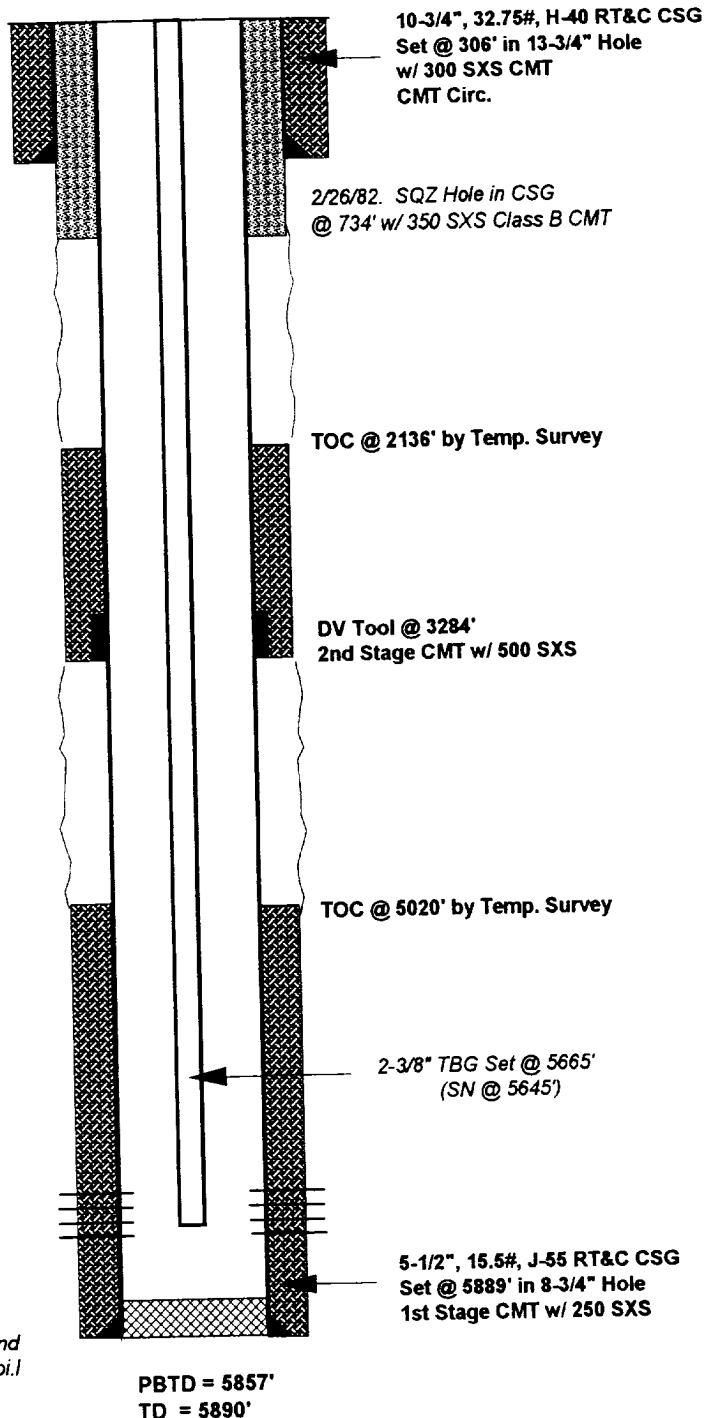
FORMATION TOPS:

Nacimiento Surface
Ojo Alamo 1525'
Kirtland 1870'
Fruitland 1985'
Pictured Cliffs 2313'
Lewis 2378'
Chacra 3112'
Cliff House 3824'
Menefee 3900'
Pt. Lookout 4441'
Mancos 4654'
Gallup 5565'

GALLUP PERFS:

5600'-10'
5636'-50'
5656'-77'
5689'-96'
w/ 4 Shift.

Frac'd w/ 25,000# 20/40 Sand
& 27,804 Gals. lease oil





FARMING E No. 2

PLUGGED AND ABANDONED CONDITION

API NUMBER:
30-039-05680

LOCATION:
Unit B, 764' FNL & 1870' FEL
NW/NE, Sec. 2, T24N, R6W
Rio Arriba County

SPUD DATE: 12/16/58
COMPL. DATE: 1/17/59
ELEVATION: 6503' DF

FORMATION TOPS:

Nacimiento Surface
Ojo Alamo 1525'
Kirtland 1870'
Fruitland 1985'
Pictured Cliffs 2313'
Lewis 2378'
Chacra 3112'
Cliff House 3824'
Menefee 3900'
Pt. Lookout 4441'
Mancos 4654'
Gallup 5565'

2/26/82. SQZ Hole in CSG
@ 734'
w/ 350 SXS Class B CMT

TOC @ 2136'
by Temp. Survey

DV Tool @ 3284'
2nd Stage CMT w/ 500 SXS

TOC @ 5020'
by Temp. Survey

GALLUP PERFS:

5600'-10'
5636'-50'
5656'-77'
5689'-96'
w/ 4 Shft.

Frac'd w/ 25,000# 20/40 Sand
& 27,804 Gals. lease oil

Perf 2 SQZ Holes @ 356'
225 SXS Class G CMT
(170 SXS Outside & 55 SXS Inside CSG)

10-3/4", 32.75#, H-40 RT&C CSG
Set @ 306' in 13-3/4" Hole
w/ 300 SXS CMT
CMT Circ.

Spot 50' (12 SXS) Class G CMT on top of
CMT RET @ 1525'
SQZ Perfs @ 1575' w/ 56 SXS Class G CMT

Spot 50' (12 SXS) Class G CMT on top of
CMT RET @ 1870'
SQZ Perfs @ 1920' w/ 56 SXS Class G CMT

Spot 50' (6 SXS) Class G CMT on top of
CMT RET @ 1985'
SQZ Perfs @ 2035' w/ 56 SXS Class G CMT

Spot 100' (20 SXS) Class G CMT Plug
from 2363'-2263'

Spot 100' (20 SXS) Class G CMT Plug
from 3162'-3062'

Spot 50' (12 SXS) Class G CMT on top of
CMT RET @ 3824'
SQZ Perfs @ 3874' w/ 56 SXS Class G CMT

Spot 100' (20 SXS) Class G Neat
on top of
CIBP Set @ 5515'

5-1/2", 15.5#, J-55 RT&C CSG
Set @ 5889' in 8-3/4" Hole
1st Stage CMT w/ 250 SXS

PBTD = 5857'
TD = 5890'