

**NEW MEXICO OIL CONSERVATION COMMISSION
WELL LOCATION AND ACERAGE DEDICATION PLAT**

All distances must be from the outer boundaries of the Section

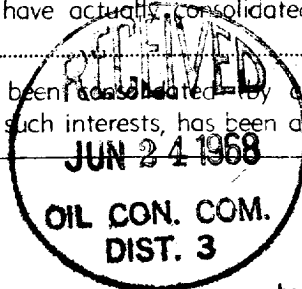
Operator HENSON-MONTIN-GREER DRILLING CORP.			Lease CANADA OJITOS UNIT		Well No. 12 (A-22)
Unit Letter A	Section 22	Township 25 NORTH	Range 1 WEST	County RIO ARriba	
Actual Footage Location of Well: 525 feet from the NORTH line and 825 feet from the EAST line					
Ground Level Elev. 7343.0	Producing Formation Mancos	Pool West Puerto Chiquito		Dedicated Acreage: 320 Acres	

1. Outline the acreage dedicated to the subject well by colored pencil or hachure marks on the plat below.
2. If more than one lease is dedicated to the well, outline each and identify the ownership thereof (both as to working interest and royalty),
3. If more than one lease of different ownership is dedicated to the well, have the interests of all owners been consolidated by communitization, unitization, force-pooling, etc?

() Yes () No If answer is "yes," type of consolidation

If answer is "no," list the owners and tract descriptions which have actually consolidated. (Use reverse side of this form if necessary.)

No allowable will be assigned to the well until all interests have been consolidated by communitization, unitization, forced-pooling, or otherwise) or until a non standard unit, eliminating such interests, has been approved by the Commission.



CERTIFICATION

I hereby certify that the information contained herein is true and complete to the best of my knowledge and belief.

[Signature]
Name

Position **Vice-President**

HENSON-MONTIN-GREER DRILLING CORP.
Company

Date **June 19, 1968**

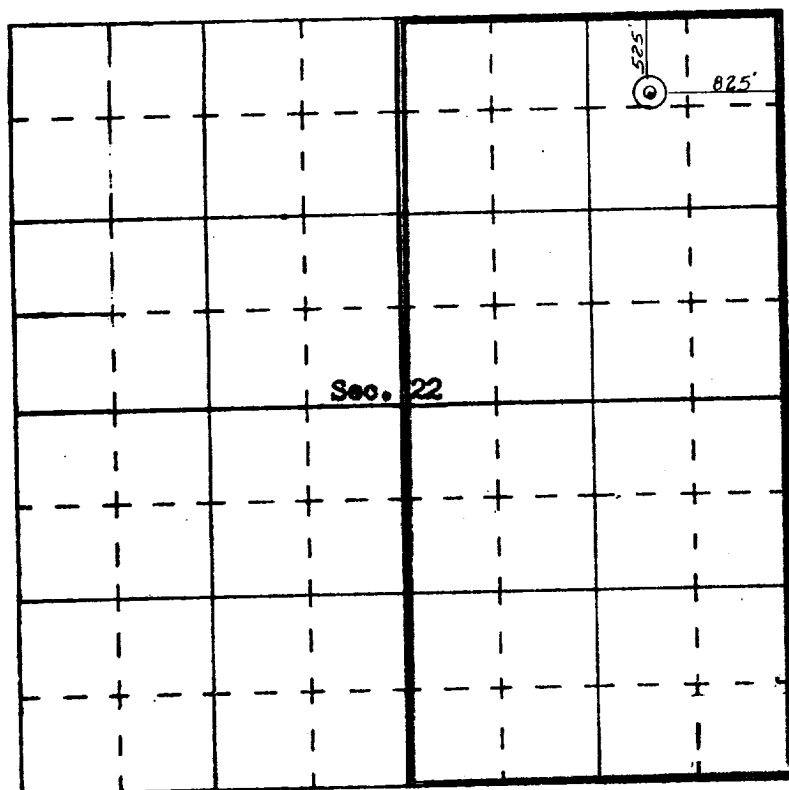
I hereby certify that the well location shown on this plat was plotted from field notes of actual surveys made by me or under my supervision, and that the same is true and correct to the best of my knowledge and belief.

19 June, 1968
Date Surveyed

[Signature]
Registered Professional Engineer
and/or Land Surveyor

JAMES F. LEESE

Certificate No. **1468**



SCALE—4 INCHES EQUALS 1 MILE

SAN JUAN ENGINEERING COMPANY, FARMINGTON, N. M.