

UNITED STATES
DEPARTMENT OF THE INTERIOR
GEOLOGICAL SURVEY

APPLICATION FOR PERMIT TO DRILL, DEEPEN, OR PLUG BACK

1a. TYPE OF WORK
DRILL ☒ DEEPEN ☐ PLUG BACK ☐

b. TYPE OF WELL
OIL WELL ☐ GAS WELL ☒ OTHER ☐ SINGLE ZONE ☒ MULTIPLE ZONE ☐

2. NAME OF OPERATOR
Continental Oil Co.

3. ADDRESS OF OPERATOR
152 No. Durbin Casper, Wyoming 82601

4. LOCATION OF WELL (Report location clearly and in accordance with any State requirements.)*
At surface 1155' FNL, 1710' FEL (NW NE)
At proposed prod. zone

14. DISTANCE IN MILES AND DIRECTION FROM NEAREST TOWN OR POST OFFICE*

15. DISTANCE FROM PROPOSED* LOCATION TO NEAREST PROPERTY OR LEASE LINE, FT. (Also to nearest drlg. unit line, if any)
13 DISTANCE FROM PROPOSED LOCATION* TO NEAREST WELL, DRILLING COMPLETED, OR APPLIED FOR, ON THIS LEASE, FT.
16. NO. OF ACRES IN LEASE
19. PROPOSED DEPTH 3873

17. NO. OF ACRES ASSIGNED TO THIS WELL 160

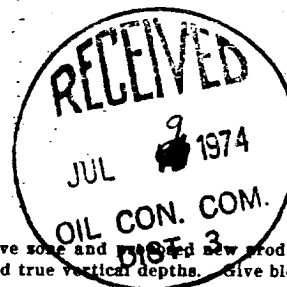
20. ROTARY OR CABLE TOOLS Rotary

21. ELEVATIONS (Show whether DF, RT, GR, etc.)
22. APPROX. DATE WORK WILL START*

23. PROPOSED CASING AND CEMENTING PROGRAM

SIZE OF HOLE	SIZE OF CASING	WEIGHT PER FOOT	SETTING DEPTH	QUANTITY OF CEMENT
12 1/4"	8 5/8"	24#	200'	150 sacks
7 7/8"	5 1/2"	15.5#	3873"	70 sacks

It is proposed to drill the subject well to test for commercial gas production from the South Blanco Pictured Cliffs formation. No DST's or cores are planned. All appropriate logs will be run. The drilling rig will be equipped with a blow-out preventer which will be tested daily.



IN ABOVE SPACE DESCRIBE PROPOSED PROGRAM: If proposal is to deepen or plug back, give data on present productive zone and proposed new productive zone. If proposal is to drill or deepen directionally, give pertinent data on subsurface locations and measured and true vertical depths. Give blowout preventer program, if any.

24. SIGNED J. A. Urban TITLE Administrative Supervisor DATE 7-3-74

(This space for Federal or State office use)

PERMIT NO. _____ APPROVAL DATE _____

APPROVED BY [Signature] TITLE _____ DATE _____
CONDITIONS OF APPROVAL, IF ANY:

NEW MEXICO OIL CONSERVATION COMMISSION
WELL LOCATION AND ACREAGE DEDICATION PLAT

Form C-102
Supersedes C-128
Effective 1-1-55

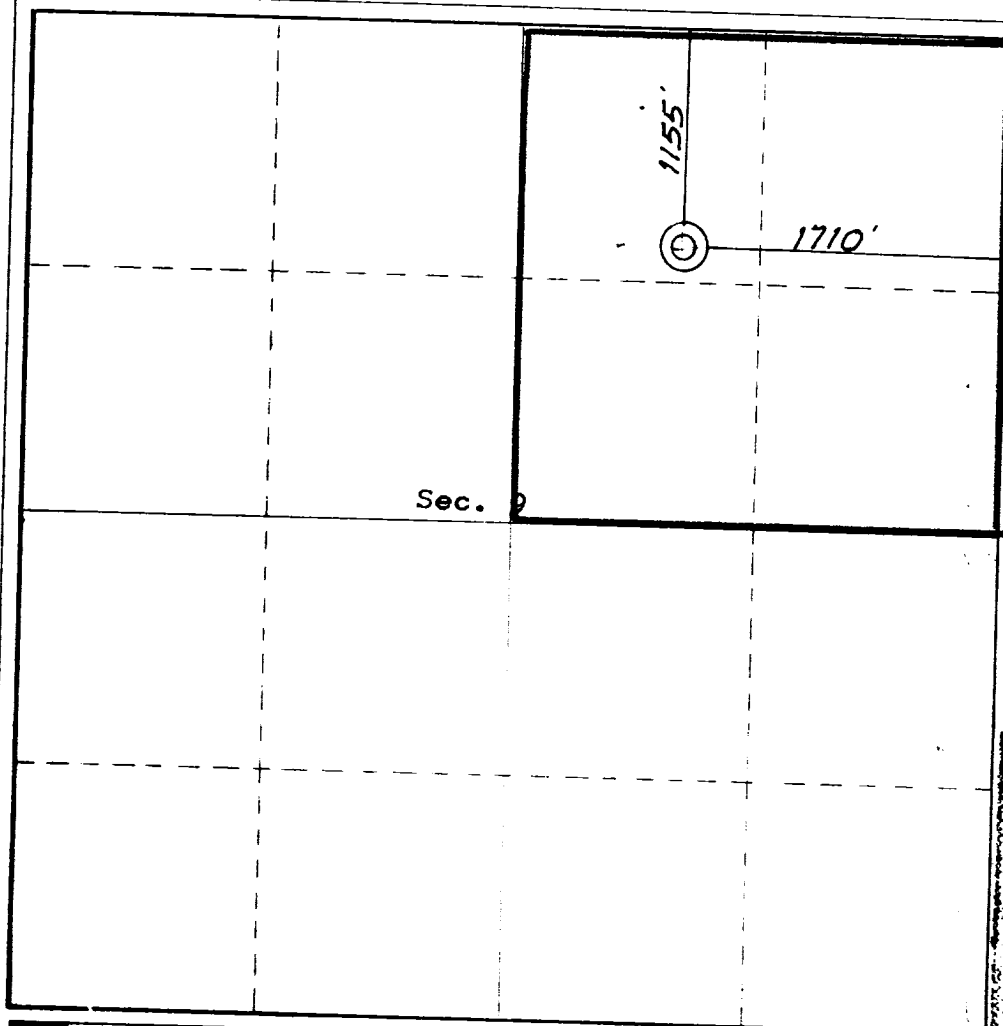
All distances must be from the outer boundaries of the Section.

Operator CONTINENTAL OIL COMPANY				Lease A X I APACHE "O"		Well No. 5	
Unit Letter B	Section 9	Township 25 NORTH	Range 4 WEST	County RIO ARriba			
Actual Footage Location of Well: 1155 feet from the NORTH line and 1710 feet from the EAST line							
Ground Level Elev. 7268.0	Producing Formation So. Blanco Pictured Cliffs		Pool 160 Acres		Dedicated Acreage		

1. Outline the acreage dedicated to the subject well by colored pencil or hachure marks on the plat below.
2. If more than one lease is dedicated to the well, outline each and identify the ownership thereof (both as to working interest and royalty).
3. If more than one lease of different ownership is dedicated to the well, have the interests of all owners been consolidated by communitization, unitization, force-pooling, etc?
☐ Yes ☐ No If answer is "yes," type of consolidation _____

If answer is "no," list the owners and tract descriptions which have actually been consolidated. (Use reverse side of this form if necessary.) _____

No allowable will be assigned to the well until all interests have been consolidated (by communitization, unitization, forced-pooling, or otherwise) or until a non-standard unit, eliminating such interests, has been approved by the Commission.



CERTIFICATION

I hereby certify that the information contained herein is true and complete to the best of my knowledge and belief.

J. A. Usher

Position
Administrative Supervisor

Company
Continental Oil Company

Date
July 3, 1974

I hereby certify that the well location shown on this plat was plotted from field notes of actual surveys made by me or under my supervision, and that the same is true and correct to the best of my knowledge and belief.

