

30-039-21066

UNITED STATES
DEPARTMENT OF THE INTERIOR
GEOLOGICAL SURVEY

APPLICATION FOR PERMIT TO DRILL, DEEPEN, OR PLUG BACK

1a. TYPE OF WORK
 DRILL DEEPEN PLUG BACK
 b. TYPE OF WELL
 OIL WELL GAS WELL OTHER
 SINGLE ZONE MULTIPLE ZONE

2. NAME OF OPERATOR
 Skelly Oil Company

3. ADDRESS OF OPERATOR
 Rm 208 Goodstein Bldg., 330 So. Center, Casper, WY 82601

4. LOCATION OF WELL (Report location clearly and in accordance with any State requirements.)
 At surface 945' FEL & 820' FSL Sec. 5 - T24N-R5W
 At proposed prod. zone (SE/4 SE/4)
 Same

14. DISTANCE IN MILES AND DIRECTION FROM NEAREST TOWN OR POST OFFICE*
 11.5 miles NE of Counselor's Trading Post

15. DISTANCE FROM PROPOSED* LOCATION TO NEAREST PROPERTY OR LEASE LINE, FT. (Also to nearest drlg. unit line, if any) 820'

16. NO. OF ACRES IN LEASE 2657

17. NO. OF ACRES ASSIGNED TO THIS WELL 345.04

18. DISTANCE FROM PROPOSED LOCATION* TO NEAREST WELL, DRILLING COMPLETED, OR APPLIED FOR, ON THIS LEASE, FT.

19. PROPOSED DERTH 7100'

20. ROTARY OR CABLE TOOLS Rotary

21. ELEVATIONS (Show whether DF, RT, GR, etc.) 6635' GL

22. APPROX. DATE WORK WILL START* March 5, 1975

23. PROPOSED CASING AND CEMENTING PROGRAM

SIZE OF HOLES	SIZE OF CASING	WEIGHT PER FOOT	SETTING DEPTH	QUANTITY OF CEMENT
12 - 1/4"	8 - 5/8" OD	24#	350'	350 sks.
7 - 7/8"	4 - 1/2" OD	11.6#	7100'	800 sks.

We propose to drill the captioned location to test the Dakota. Approximately 350' of 8 - 5/8 surface casing will be set and cemented from top to bottom. If a completion is attempted, 4 - 1/2" OD casing will be set at approximately 7100' with DV Tool set below Pictured Cliffs formation at approximately 3700' with 300 sks. Mud program as follows:

Depth	Weight	Viscosity	Fluid Loss
350' - 5747'	8.8 - 8.9	30 - 31	8.0 - 9.0 CC
5747' - 7100'	8.9 - 9.1	31 - 45	9.0 - 7.0 CC

On drilling out below surface, we propose to use a double gate blow out preventer integrally equiped with drill pipe rams and blind gate rams, all rated at 3000 psi working pressure, 6000 psig test pressure, with check valve (3000# WP) at BOP drill pipefill inlet and two Kelly cock valves, one for Kelly and one for standby for drill pipe.

IN ABOVE SPACE DESCRIBE PROPOSED PROGRAM: If proposal is to deepen or plug back, give data on present productive zone and proposed new productive zone. If proposal is to drill or deepen directionally, give pertinent data on subsurface locations and measured and true vertical depths. Give blowout preventer program, if any.

24. SIGNED [Signature] TITLE Area Superintendent DATE February 26, 1975

(This space for Federal or State office use)

PERMIT NO. _____ APPROVAL DATE _____

APPROVED BY [Signature] TITLE _____ DATE _____

CONDITIONS OF APPROVAL, IF ANY:

NEW MEXICO OIL CONSERVATION COMMISSION
WELL LOCATION AND ACREAGE DEDICATION PLAT

Form C-102
Supersedes C-128
Effective 1-1-65

All distances must be from the outer boundaries of the Section.

Operator SKELLY OIL COMPANY		Lease JICARILLA "B"			Well No. 23
Unit Letter P	Section 5	Township 24 NORTH	Range 5 WEST	County RIO ARRIBA	
Actual Footage Location of Well: 820 feet from the SOUTH line and 945 feet from the EAST line					
Ground Level Elev. 6635	Producing Formation Dakota		Pool Basin ✓	Dedicated Acreage: 345.00 Acres	

1. Outline the acreage dedicated to the subject well by colored pencil or hachure marks on the plat below. **02**

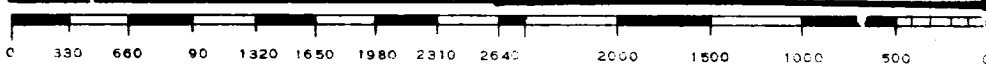
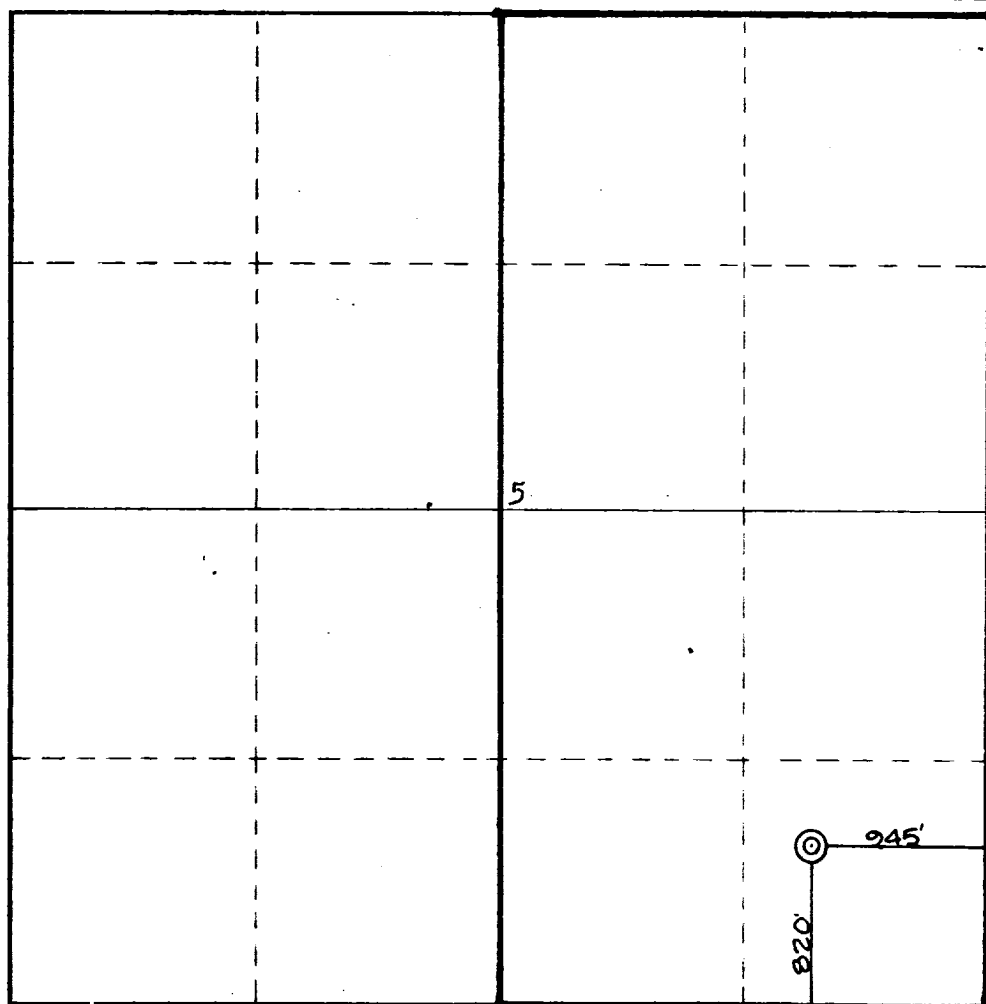
2. If more than one lease is dedicated to the well, outline each and identify the ownership thereof (both as to working interest and royalty).

3. If more than one lease of different ownership is dedicated to the well, have the interests of all owners been consolidated by communitization, unitization, force-pooling, etc?
FEB 23 1975

Yes No If answer is "yes," type of consolidation _____

If answer is "no," list the owners and tract descriptions which have actually been consolidated. (Use reverse side of this form if necessary.) _____

No allowable will be assigned to the well until all interests have been consolidated (by communitization, unitization, forced-pooling, or otherwise) or until a non-standard unit, eliminating such interests, has been approved by the Commission.



CERTIFICATION

I hereby certify that the information contained herein is true and complete to the best of my knowledge and belief.

Roy D. McWhirter
Name
Roy D. McWhirter

Position
Area Supt.

Company
Skelly Oil Company

Date
Feb. 26, 1975

I hereby certify that the well location shown on this plat was plotted from field notes of actual surveys made by me or under my supervision, and that the same is true and correct to the best of my knowledge and belief.

Date Surveyed
January 1975

Registered Professional Engineer and/or Surveyor
James P. Leese

Certificate No. **1483**