

30-039-21068

UNITED STATES
DEPARTMENT OF THE INTERIOR
GEOLOGICAL SURVEY

APPLICATION FOR PERMIT TO DRILL, DEEPEN, OR PLUG BACK

1a. TYPE OF WORK

DRILL ☒DEEPEN ☐PLUG BACK ☐

b. TYPE OF WELL

OIL
WELL ☐GAS
WELL ☒OTHER ☐SINGLE
ZONE ☒MULTIPLE
ZONE ☐

2. NAME OF OPERATOR

Skelly Oil Company

3. ADDRESS OF OPERATOR

Rm 208 Goodstein Bldg., 330 So. Center, Casper, WY 82601

4. LOCATION OF WELL (Report location clearly and in accordance with any State requirements.)*

At surface

1735' FNL & 800' FNL Sec. 33 - T25N-R5W

At proposed prod. zone

(SW/4 NW/4)
Same

14. DISTANCE IN MILES AND DIRECTION FROM NEAREST TOWN OR POST OFFICE

Approximately 15 miles NE of Counselor, WY

15. DISTANCE FROM PROPOSED*

LOCATION TO NEAREST
PROPERTY OR LEASE LINE, FT.
(Also to nearest drlg. unit line, if any)

800'

18. DISTANCE FROM PROPOSED LOCATION*

TO NEAREST WELL, DRILLING, COMPLETED,
OR APPLIED FOR, ON THIS LEASE, FT.

1075'

16. NO. OF ACRES IN LEASE

2400 ACRES

7250 OIL CON. COM. DIST. 3

7. NO. OF ACRES ASSIGNED

TO THIS WELL

320

21. ELEVATIONS (Show whether DF, RT, GR, etc.)

6689' GL

22. APPROX. DATE WORK WILL START*

March 25, 1975

23.

PROPOSED CASING AND CEMENTING PROGRAM

SIZE OF HOLE	SIZE OF CASING	WEIGHT PER FOOT	SETTING DEPTH	QUANTITY OF CEMENT
12 1/4"	8 5/8" OD	24#	350'	250 Sks.
7 7/8"	4 1/2" OD	11.6#	7250'	1100 Sks.

We propose to drill the captioned location to test the Dakota. Approximately 350' of 8 5/8" surface casing will be set and cemented from top to bottom. If a completion is attempted, 4 1/2" OD casing will be set at approximately 7250' with DV tool set below Pictured Cliff formation at approximately 3450' with 380 sks.

Mud program as follows:

Depth	Weight	Vis.	Fluid Loss
350'-5971'	8.8-8.9	30-31	8.0-9.0cc
5971'-7250'	8.9-9.1	31-45	9.0-7.0cc

On drilling out below surface, we propose to use a double gate blow out preventer integally equipped with drill pipe rams and blind gate rams, all rated at 3000 psi working pressure, 6000 psig test pressure, with check valve (3000# WP) at BOP drill pipe fill inlet and two Kelly cock valves, one for Kelly and one for stand-by for drill pipe.

IN ABOVE SPACE DESCRIBE PROPOSED PROGRAM: If proposal is to deepen or plug back, give data on present productive zone and proposed new productive zone. If proposal is to drill or deepen directionally, give pertinent data on subsurface locations and measured and true vertical depths. Give blowout preventer program, if any.

24.

SIGNED

TITLE

Area Superintendent

DATE

March 14, 1975

(This space for Federal or State office use)

PERMIT NO.

APPROVAL DATE

APPROVED BY

TITLE

DATE

CONDITIONS OF APPROVAL, IF ANY:

Instructions

General: This form is designed for submitting proposals to perform certain well operations, as indicated, on all types of lands and leases for appropriate action by either a Federal or a State agency, or both, pursuant to applicable Federal and/or State laws and regulations. Any necessary special instructions concerning the use of this form and the number of copies to be submitted, particularly with regard to local, area, or regional procedures and practices, either are shown below or will be issued by, or may be obtained from, the local Federal and/or State office.

Item 1: If the proposal is to redrill to the same reservoir at a different subsurface location or to a new reservoir, use this form with appropriate notations. Consult applicable State or Federal regulations concerning subsequent work proposals or reports on the well.

Item 4: If there are no applicable State requirements, locations on Federal or Indian land should be described in accordance with Federal requirements. Consult local State or Federal office for specific instructions.

Item 14: Needed only when location of well cannot readily be found by road from the land or lease description. A plat, or plats, separate or on this reverse side, showing the roads to, and the surveyed location of, the well, and any other required information, should be furnished when required by Federal or State agency offices.

Items 15 and 18: If well is to be, or has been directionally drilled, give distances for subsurface location of hole in any present or objective production zone.

Item 22: Consult applicable Federal or State regulations, or appropriate officials, concerning approval of the proposal before operations are started.

**NEW MEXICO OIL CONSERVATION COMMISSION
WELL LOCATION AND ACREAGE DEDICATION PLAT**

Form C-102
Supersedes C-128
Effective 1-1-65

All distances must be from the outer boundaries of the Section.

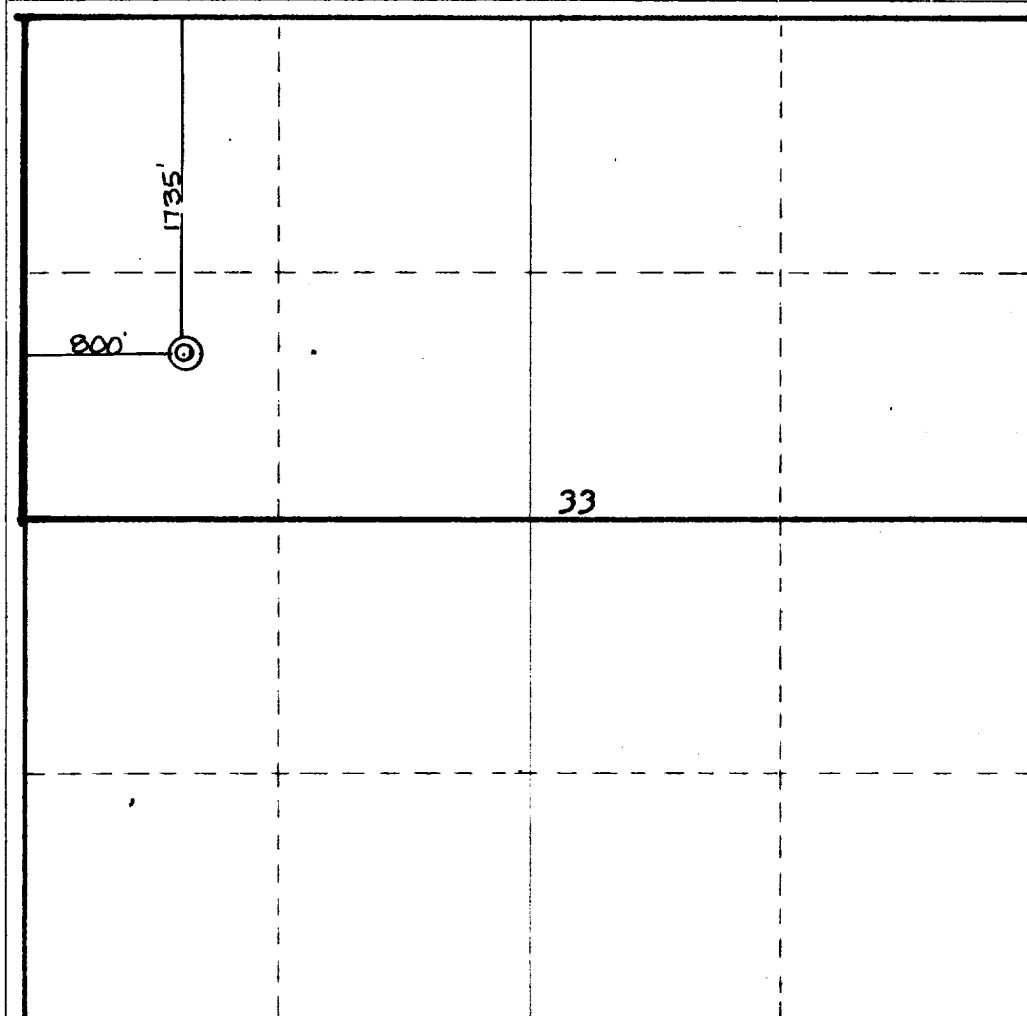
Operator SKELLY OIL COMPANY			Lease JICARILLA "C"		Well No. 27
Unit Letter E	Section 33	Township 25 NORTH	Range 5 WEST	County RIO ARriba	
Actual Footage Location of Well: <div style="display: flex; justify-content: space-between;"> 1735 feet from the NORTH line and 800 feet from the WEST line </div>					
Ground Level Elev. 6689	Producing Formation Dakota	Pool Basin		Dedicated Acreage: 320 Acres	

1. Outline the acreage dedicated to the subject well by colored pencil or hachure marks on the plat below.
2. If more than one lease is dedicated to the well, outline each and identify the ownership thereof (both as to working interest and royalty).
3. If more than one lease of different ownership is dedicated to the well, have the interests of all owners been consolidated by communitization, unitization, force-pooling, etc?

☐ Yes ☐ No If answer is "yes," type of consolidation _____

If answer is "no," list the owners and tract descriptions which have actually been consolidated. (Use reverse side of this form if necessary.) _____

No allowable will be assigned to the well until all interests have been consolidated (by communitization, unitization, forced-pooling, or otherwise) or until a non-standard unit, eliminating such interests, has been approved by the Commission.



CERTIFICATION

I hereby certify that the information contained herein is true and complete to the best of my knowledge and belief.

Roy J. McWhirter
Name
Roy J. McWhirter

Position
Area Supt.

Company
Skelly Oil Company

Date
Mar. 14, 1975

I hereby certify that the well location shown on this plat was plotted from field notes of actual surveys made by me or under my supervision, and that the same is true and correct to the best of my knowledge and belief.

Date Surveyed
28 January 1975
Registered Professional Engineer and Licensed Surveyor
James P. Loebe
James P. Loebe
Certificate No. **1463**

0 330 660 990 1320 1650 1980 2310 2640 2000 1500 1000 500 0