

UNITED STATES
DEPARTMENT OF THE INTERIOR
GEOLOGICAL SURVEY

30-039-21149

5. LEASE DESIGNATION AND SERIAL NO.
Jicarilla Contr. #126

6. IF INDIAN, ALLOTTEE OR TRIBE NAME

7. UNIT AGREEMENT NAME

8. FARM OR LEASE NAME

Apache

9. WELL NO.

102

10. FIELD AND POOL, OR WILDCAT

West Lindrith
Gallup-Dakota ✓11. SEC., T., R., M., OR BLK.
AND SURVEY OR AREA

Sec. 2-T24N-R4W

NMPM

12. COUNTY OR PARISH 13. STATE

Rio Arriba New Mexico

APPLICATION FOR PERMIT TO DRILL, DEEPEN, OR PLUG BACK

1a. TYPE OF WORK

DRILL ☒DEEPEN ☐PLUG BACK ☐

b. TYPE OF WELL

OIL
WELL ☒GAS
WELL ☐

OTHER

SINGLE
ZONE ☒MULTIPLE
ZONE ☐

2. NAME OF OPERATOR

Manning Gas & Oil Company

3. ADDRESS OF OPERATOR

1660 Lincoln Street, Suite 2502
Denver, Colorado 80203

4. LOCATION OF WELL (Report location clearly and in accordance with any State requirements.)

At surface

845' FNL, 1190' FWL

At proposed prod. zone

14. DISTANCE IN MILES AND DIRECTION FROM NEAREST TOWN OR POST OFFICE*

15. DISTANCE FROM PROPOSED*

LOCATION TO NEAREST
PROPERTY OR LEASE LINE, FT.
(Also to nearest drlg. unit line, if any)

845'

16. NO. OF ACRES IN

18. DISTANCE FROM PROPOSED LOCATION*

TO NEAREST WELL, DRILLING, COMPLETED,
OR APPLIED FOR, ON THIS LEASE, FT.

19. PROPOSED DEPTH

7900

17. NO. OF ACRES ASSIGNED
TO THIS WELL

212+ ✓

20. ROTARY OR CABLE TOOLS

Rotary

21. ELEVATIONS (Show whether DF, RT, GR, etc.)

6914

22. APPROX. DATE WORK WILL START*

11-15-75

23.

PROPOSED CASING AND CEMENTING PROGRAM

SIZE OF HOLE	SIZE OF CASING	WEIGHT PER FOOT	SETTING DEPTH	QUANTITY OF CEMENT
12-1/4	8-5/8	24.0	200	200 sxs
7-7/8	4-1/2	10.5, 11.6	7900	To be determined.

It is proposed to drill this well with rotary tools using mud as circulating medium through the Dakota Formation. Possible productive zones in the Gallup and Dakota Formations will be completed. Production casing will be cemented in such a manner as to protect the pictured cliffs formation.

The NW/4 Section 2 is dedicated to this well.

IN ABOVE SPACE DESCRIBE PROPOSED PROGRAM: If proposal is to deepen or plug back, give data on present productive zone and proposed new productive zone. If proposal is to drill or deepen directionally, give pertinent data on subsurface locations and measured and true vertical depths. Give blowout preventer program, if any.

24. For: Manning Gas & Oil Co.

SIGNED

Ewell N. Walsh, P. E.

TITLE

President, Walsh Engr. &
Production Corporation

DATE September 16, 1975

(This space for Federal or State office use)

PERMIT NO.

APPROVAL DATE

APPROVED BY

CONDITIONS OF APPROVAL, IF ANY:

TITLE

DATE

NW4 Application 9-16-75
Held Conditionally
at Cal

*See Instructions On Reverse Side

**NEW MEXICO OIL CONSERVATION COMMISSION
WELL LOCATION AND ACREAGE DEDICATION PLAT**

Form C-102
Supersedes C-128
Effective 1-1-65

All distances must be from the outer boundaries of the Section.

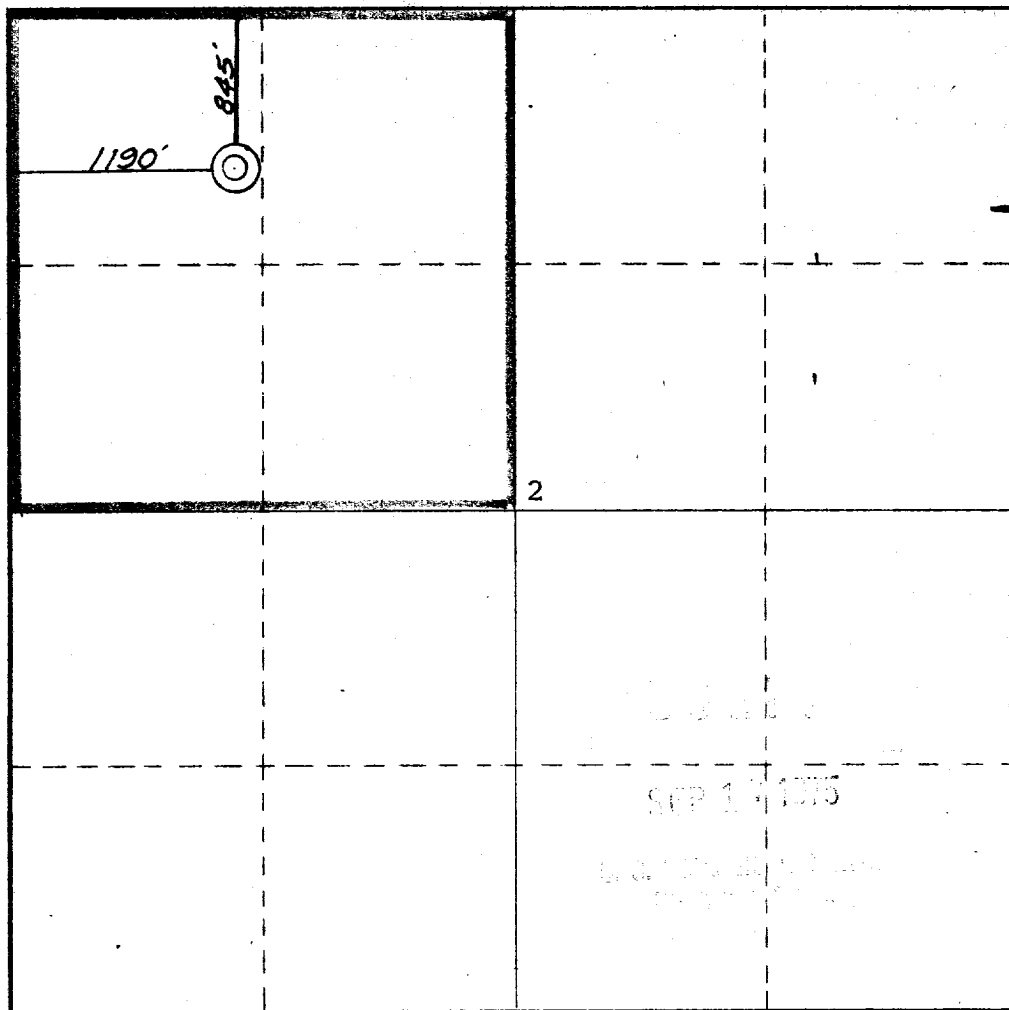
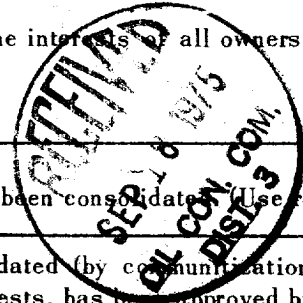
Operator MANNING GAS AND OIL CO,			Lease APACHE,		Well No. 102
Unit Letter D	Section 2	Township 24 NORTH	Range 4 WEST	County RIO ARriba	
Actual Footage Location of Well: <div style="display: flex; justify-content: space-between;"> 845 feet from the NORTH line and 1190 feet from the WEST line </div>					
Ground Level Elev. 6914	Producing Formation Gallup - Dakota	Pool Lindrith Gallup-Dakota West	Dedicated Acreage: 212+ Acres		

1. Outline the acreage dedicated to the subject well by colored pencil or hachure marks on the plat below.
2. If more than one lease is dedicated to the well, outline each and identify the ownership thereof (both as to working interest and royalty).
3. If more than one lease of different ownership is dedicated to the well, have the interests of all owners been consolidated by communitization, unitization, force-pooling, etc?

☐ Yes ☐ No If answer is "yes," type of consolidation _____

If answer is "no," list the owners and tract descriptions which have actually been consolidated (Use reverse side of this form if necessary.) _____

No allowable will be assigned to the well until all interests have been consolidated (by communitization, unitization, forced-pooling, or otherwise) or until a non-standard unit, eliminating such interests, has been approved by the Commission.



CERTIFICATION

I hereby certify that the information contained herein is true and complete to the best of my knowledge and belief.

Ewell N. Walsh
Name **Ewell N. Walsh, P.E.,**

President, Walsh Engr. & Production Corporation

Company
For: Manning Gas & Oil Co.

Date
September 16, 1975

I hereby certify that the well location shown on this plat was plotted from field notes of actual surveys made by me or under my supervision, and that the same is true and correct to the best of my knowledge and belief.

Date Signed **August 1975**

Registered Professional Engineer and/or Land Surveyor
James P. Leese
James P. Leese

Certificate No. **1463**

