

**NEW MEXICO OIL CONSERVATION COMMISSION
WELL LOCATION AND ACREAGE DEDICATION PLAT**

Alkal

Form C-102
Supersedes C-128
Effective 1-1-65

All distances must be from the outer boundaries of the Section.

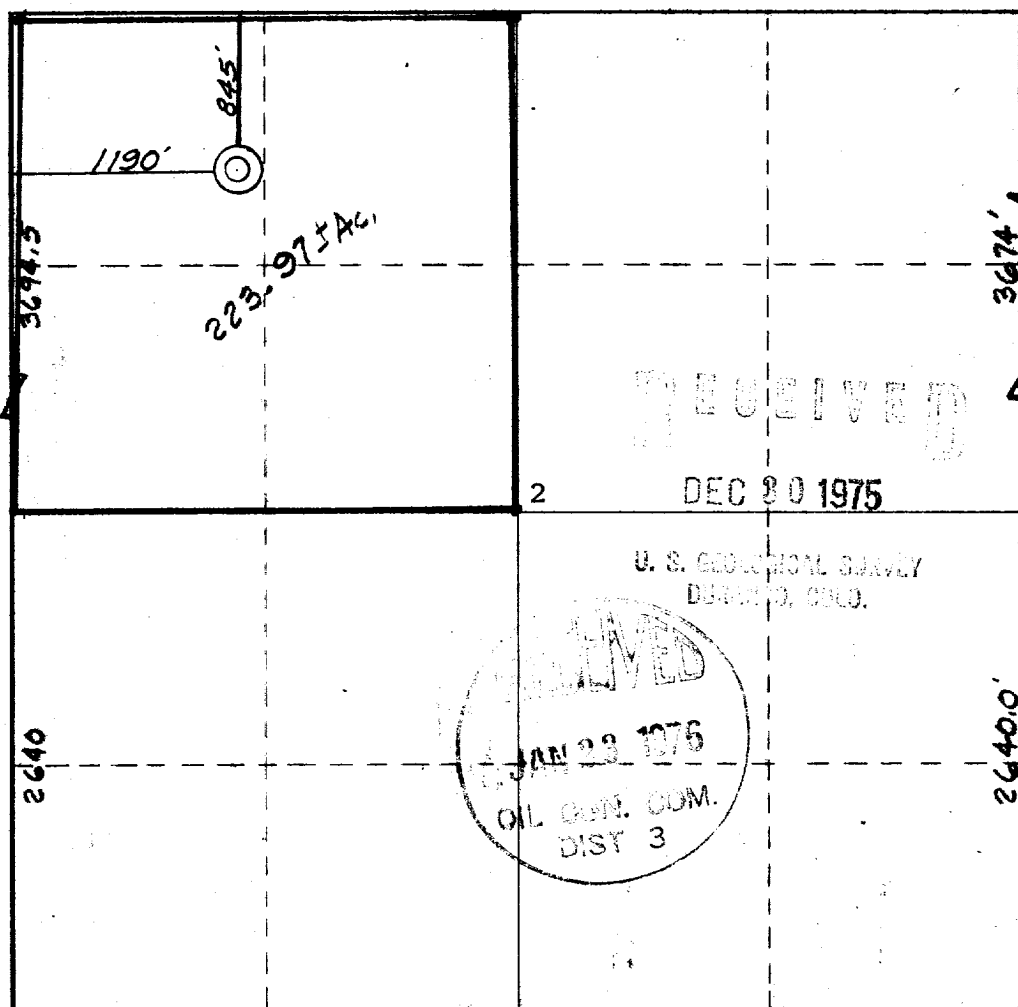
Operator MANNING GAS AND OIL CO.,			Lease APACHE,		Well No. 102
Unit Letter D	Section 2	Township 24 NORTH	Range 4 WEST	County RIO ARriba	
Actual Footage Location of Well: 845 feet from the NORTH line and 1190 feet from the WEST line					
Ground Level Elev. 6914	Producing Formation Gallup - Dakota	Pool Lindrith Gallup - Dakota West		Dedicated Acreage: 223.97 Acres	

1. Outline the acreage dedicated to the subject well by colored pencil or hatchure marks on the plat below.
2. If more than one lease is dedicated to the well, outline each and identify the ownership thereof (both as to working interest and royalty).
3. If more than one lease of different ownership is dedicated to the well, have the interests of all owners been consolidated by communitization, unitization, force-pooling, etc?

☐ Yes ☐ No If answer is "yes," type of consolidation _____

If answer is "no," list the owners and tract descriptions which have actually been consolidated. (Use reverse side of this form if necessary.) _____

No allowable will be assigned to the well until all interests have been consolidated (by communitization, unitization, forced-pooling, or otherwise) or until a non-standard unit, eliminating such interests, has been approved by the Commission.



CERTIFICATION

I hereby certify that the information contained herein is true and complete to the best of my knowledge and belief.

Ewell N. Walsh
Name **Ewell N. Walsh, P.E.**
President, Walsh Engr.

Position
& Prod. Corp.

Company For:
Manning Gas & Oil Co.

Date
12-22-75

I hereby certify that the well location shown on this plat was plotted from field notes of actual surveys made by me or under my supervision, and that the same is true and correct to the best of my knowledge and belief.

Date Signed **August 1976**
NO. **1463**
Registered Professional Engineer and/or Land Surveyor
James P. Hest
James P. Hest
Certificate No. **1463**

St