

UNITED STATES
DEPARTMENT OF THE INTERIOR

GEOLOGICAL SURVEY

API - 30-037-2172

5. LEASE DESIGNATION AND SERIAL NO.

SE 078884

6. IF INDIAN, ALLOTTEE OR TRIBE NAME

APPLICATION FOR PERMIT TO DRILL, DEEPEN, OR PLUG BACK

1a. TYPE OF WORK

DRILL ☒

DEEPEN ☐

PLUG BACK ☐

b. TYPE OF WELL

OIL WELL ☐

GAS WELL ☒

OTHER

SINGLE ZONE ☒

MULTIPLE ZONE ☐

2. NAME OF OPERATOR

El Paso Natural Gas Company

3. ADDRESS OF OPERATOR

PO Box 990, Farmington, NM 87401

4. LOCATION OF WELL (Report location clearly and in accordance with any State requirements.)

At surface

1750'S, 1625'W

At proposed prod. zone

14. DISTANCE IN MILES AND DIRECTION FROM NEAREST TOWN OR POST OFFICE*

15. DISTANCE FROM PROPOSED*

LOCATION TO NEAREST
PROPERTY OR LEASE LINE, FT.
(Also to nearest drill unit line, if any)

16. NO. OF ACRES IN LEASE

17. NO. OF ACRES ASSIGNED
TO THIS WELL

18. DISTANCE FROM PROPOSED LOCATION*
TO NEAREST WELL, DRILLING, COMPLETED,
OR ABANDONED, OF THIS LEASE, FT.

19. PROPOSED DEPTH

7185'

20. ROTARY OR CABLE TOOLS

Rotary

21. ELEVATIONS (Give whether DE, RT, GR, etc.)

6633'GR

22. APPROX. DATE WORK WILL START*

23.

PROPOSED CASING AND CEMENTING PROGRAM

SIZE OF HOLE	SIZE OF CASING	WEIGHT PER FOOT	SETTING DEPTH	QUANTITY OF CEMENT
13 3/4"	9 5/8"	32.3#	200'	224 cu.ft. to circulate
8 3/4"			5294'	
7 7/8"	4 1/2"	10.5#&11.6#	7185'	1203 cu.ft. - 2 stages

Production Casing Cementing -

1st stage - 362 cu.ft. to cover Gallup formation.

2nd stage - 1441 cu.ft. to cover Ojo Alamo formation.

JAN 2 1976

Selectively perforate and sandwater fracture the Dakota formation.

A 3000 psi WP nd 6000 psi test double gate preventer with blind and pipe rams will be used for blow out prevention on this well.

The W/2 of Section 13 is dedicated to this well.

IN ABOVE SPACE DESCRIBE PROPOSED PROGRAM: If proposal is to deepen or plug back, give data on present productive zone and proposed new productive zone. If proposal is to drill or deepen directionally, give pertinent data on subsurface locations and measured and true vertical depths. Give blowout preventer program, if any.

24.

SIGNED

D. G. Brisco

TITLE

Drilling Clerk

DATE

12-30-75

(This space for Federal or State office use)

PERMIT NO.

APPROVAL DATE

APPROVED BY

TITLE

DATE

CONDITIONS OF APPROVAL, IF ANY:

OK

*See Instructions On Reverse Side

NEW MEXICO OIL CONSERVATION COMMISSION
WELL LOCATION AND ACREAGE DEDICATION PLAT

Form C-102
Supersedes C-12d
Effective 1-1-65

All distances must be from the outer boundaries of the Section.

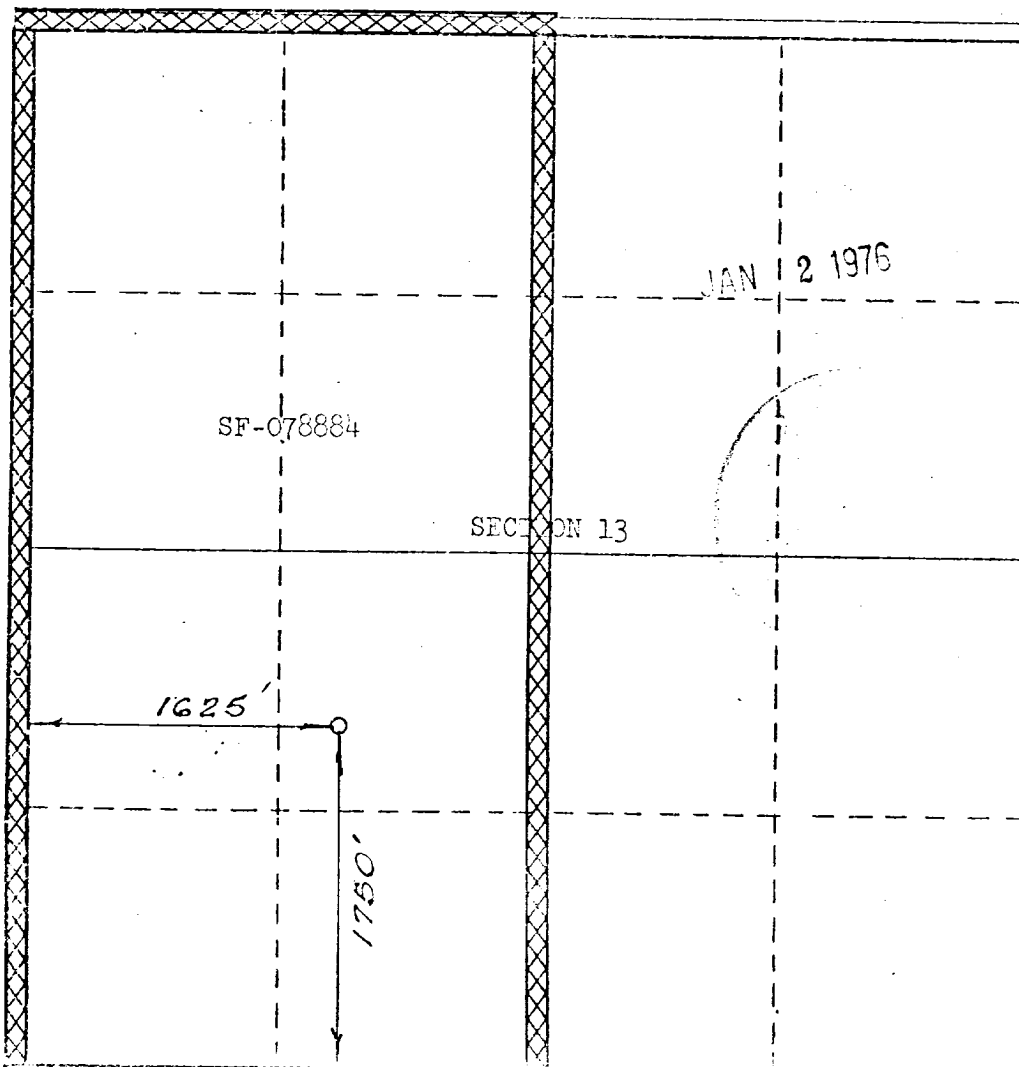
Operator EL PASO NATURAL GAS COMPANY		Lease CANYON LARGO UNIT (SF-078884)		Well No. 283
Unit Letter K	Section 13	Township 25-N	Range 6-W	County RIO ARriba
Actual Footage Location of Well: 1750 feet from the SOUTH line and 1625 feet from the WEST line				
Ground Level Elev. 6633	Producing Formation DAKOTA	Pool BASIN DAKOTA	Dedicated Acreage 320.00 Acres	

1. Outline the acreage dedicated to the subject well by colored pencil or hachure marks on the plat below.
2. If more than one lease is dedicated to the well, outline each and identify the ownership thereof (both as to working interest and royalty).
3. If more than one lease of different ownership is dedicated to the well, have the interests of all owners been consolidated by communitization, unitization, force-pooling, etc?

☒ Yes ☐ No If answer is "yes," type of consolidation Unitization

If answer is "no," list the owners and tract descriptions which have actually been consolidated. (Use reverse side of this form if necessary.)

No allowable will be assigned to the well until all interests have been consolidated (by communitization, unitization, forced-pooling, or otherwise) or until a non-standard unit, eliminating such interests, has been approved by the Commission.



CERTIFICATION

I hereby certify that the information contained herein is true and complete to the best of my knowledge and belief.
Signed by
D. G. Brisco

Name
Drilling Clerk
Position
El Paso Natural Gas Co.
Company
December 30, 1975
Date

I hereby certify that the well location shown on this plat was plotted from field notes of actual surveys made by me or under my supervision, and that the same is true and correct to the best of my knowledge and belief.

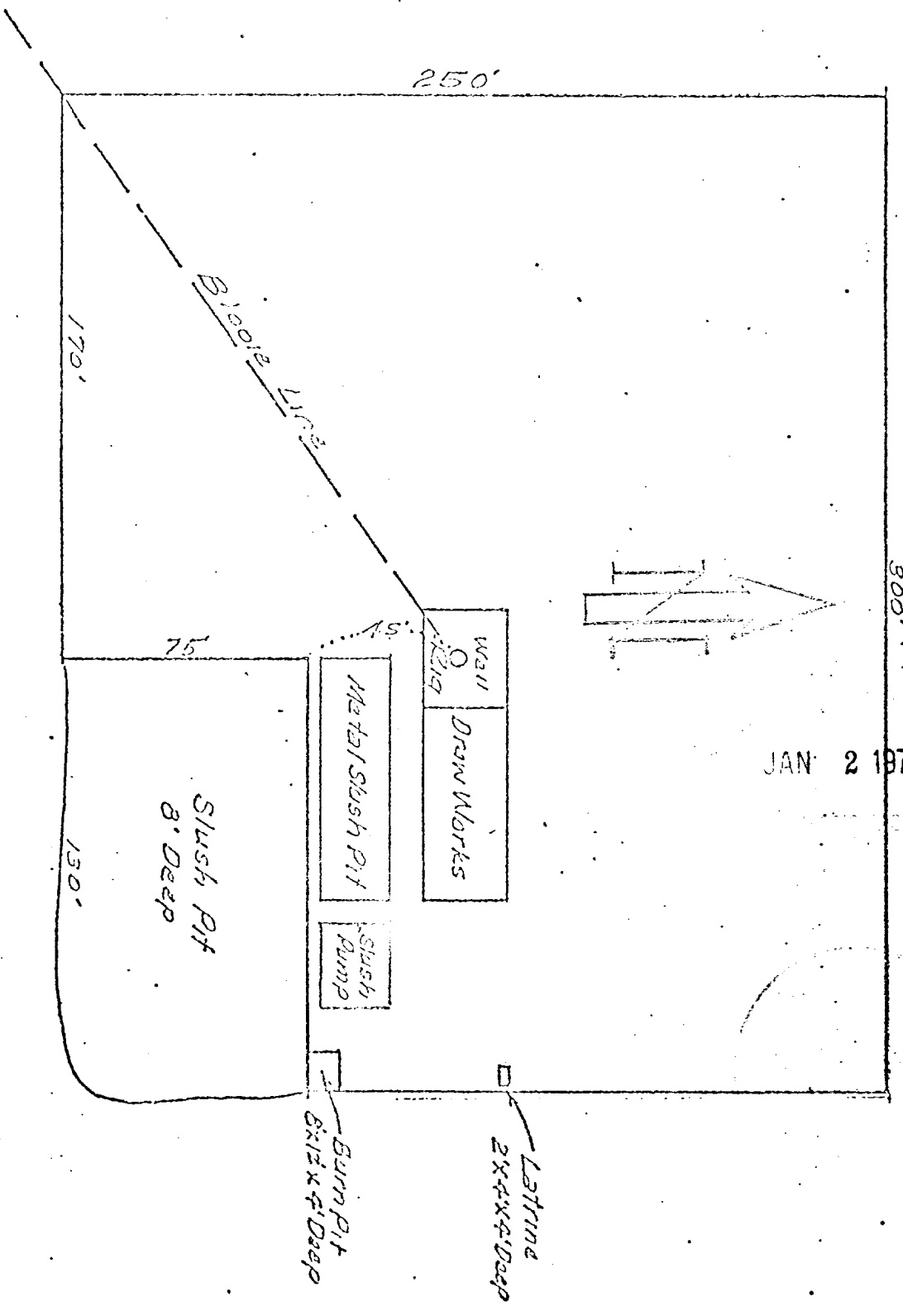
Date Surveyed
NOVEMBER 24, 1975

Registered Professional Engineer
and/or Land Surveyor

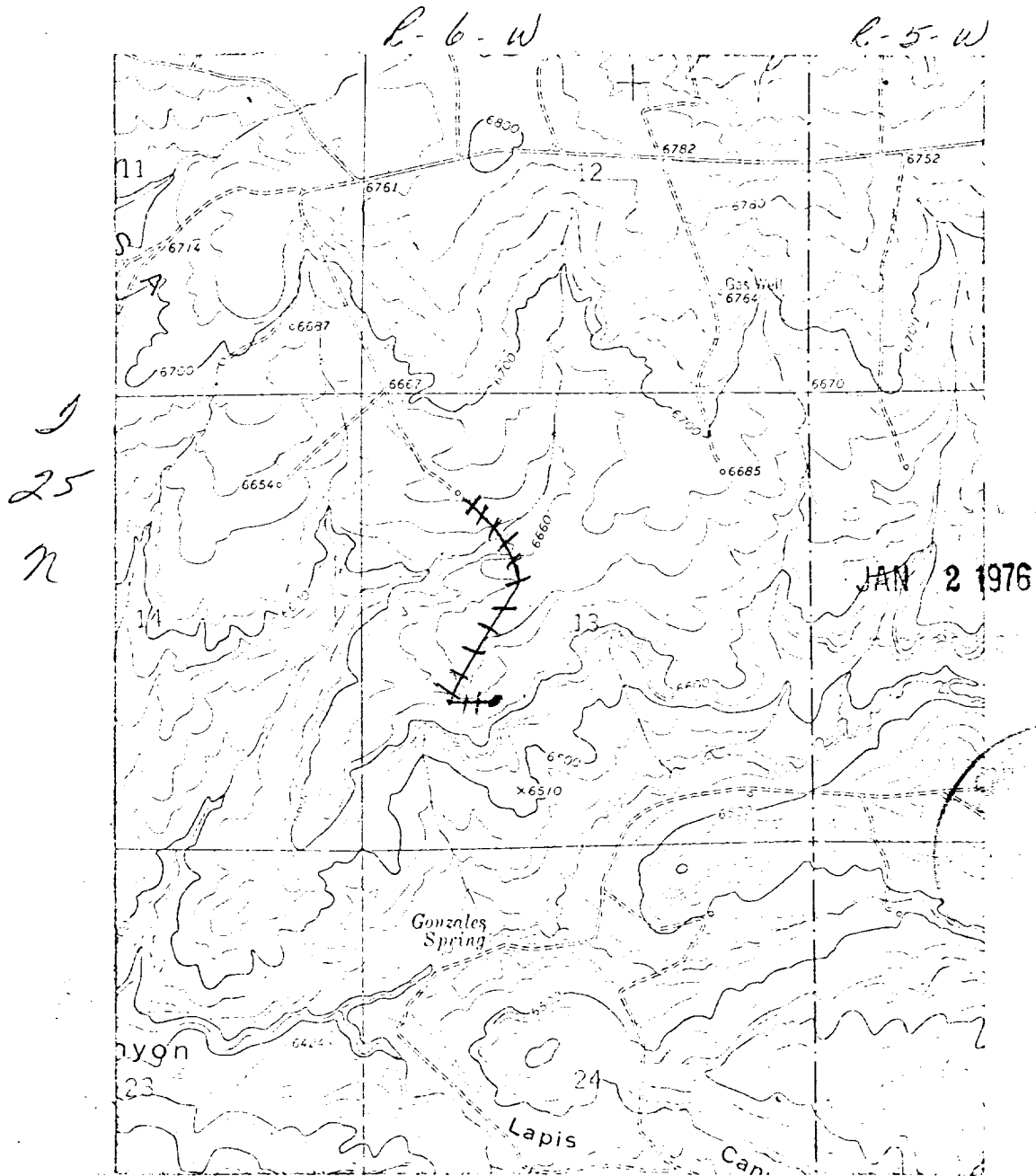
[Signature]
Certified by **1760**

LOCATION AND EQUIPMENT LAY-OUT
Canyon Largo Unit No. 283

JAN 2 1976



Canyon Largo Unit #288
 NE 1/4 Sec. 13, T-25-N, R-6-W



LEGEND OF RIGHT-OF-WAYS

EXISTING ROADS	—
EXISTING PIPELINES	- - -
EXISTING ROAD & PIPELINE	- - -
PROPOSED ROADS	—
PROPOSED PIPELINES	- - -
PROPOSED ROAD & PIPELINE	- - -