

UNITED STATES
DEPARTMENT OF THE INTERIOR

GEOLOGICAL SURVEY **API 30-039-21183**

APPLICATION FOR PERMIT TO DRILL, REFIN, OR PLUG BACK

1. NAME OF WELL

DRILL ☒

REFIN ☐

PLUG BACK ☐

2. TYPE OF WELL

WELL ☐

GAS ☒

OTHER

WATER ☐

OTHER ☐

3. NAME OF OPERATOR

Manning Gas & Oil Company

4. ADDRESS OF OPERATOR 1630 Lincoln Street, Suite 2322,

Denver, Colorado 80203

5. LOCATION OF WELL (Specify location clearly and in accordance with any of the following):

1390' FWL, 1140' FWL

6. PROPOSED PRODUCTION

None

7. DISTANCE IN FEET FROM NEAREST TOWN OR POST OFFICE*

8. DISTANCE FROM NEAREST

LOCATION TO NEAREST
PROPERTY OR LEASE LINE, FT.
(Also to nearest city, town, or village, if any)

1140'

9. NO. OF ACRES IN LEASE

2665

10. NO. OF ACRES ASSIGNED
TO THIS WELL

220.47

11. DISTANCE FROM PROPOSED LOCATION*

TO NEAREST WELL, DRILLING, COMPLETED,
OR ABANDONED, ON THIS LEASE, FT.

12. DISTANCE FROM

3200

13. ROTARY OR CABLE TOOLS

Rotary

14. FINISHES (Show whether DF, RT, GR, etc.)

6850' GR

15. APPROX. DATE WORK WILL START*

February 18, 1976

23. PROPOSED Casing and Cementing Program

SIZE OF TUBE	SIZE OF CASING	WEIGHT PER FOOT	SETTING DEPTH	QUANTITY OF CEMENT
12 1/2	8-5/8	24.0	100	75 sxs
7-7/8	4-1/2	9.50	3100	100 sxs

It is proposed to drill this well with rotary tools using drilling mud for circulation through the Pictured Cliffs Formation. All possible production intervals in the Pictured Cliffs will be completed.

The NW portion of Section 3 is dedicated to this well.



IN ABOVE SPACE DESCRIBE PROPOSED PROGRAM: If proposal is to deepen or plug back, give data on present productive zone and proposed new productive zone. If proposal is to drill or deepen directionally, give pertinent data on subsurface locations and measured and true vertical depths. Give blowout preventer program, if any.

24. For: Manning Gas and Oil Company President, Walsh Engineering

SIGNATURE *W. N. Walsh*

TITLE & Production Corp.

DATE February 11,

(This space for Federal or State office use)

PERMIT NO.

APPROVAL DATE

APPROVED BY

TITLE

DATE

CONDITIONS OF APPROVAL, IF ANY:

OK

St.

*See Instructions On Reverse Side

Hold C-100 for NW 1/4

**NEW MEXICO OIL CONSERVATION COMMISSION
WELL LOCATION AND ACREAGE DEDICATION PLAT**

Form C-102
Supersedes C-128
Effective 1-4-65

All distances must be from the outer boundaries of the Section.

Operator MANNING GAS AND OIL			Lease JICARILLA APACHE		Well No. 14
Unit Letter E	Section 3	Township 24 NORTH	Range 4 WEST	County RIO ARriba	
Actual Footage Location of Well: 1850 feet from the NORTH line and 1140 feet from the WEST line.					
Ground Level Elev. 6850	Producing Formation	Pool	Dedicated Acreage: 230.47 ± Acres		

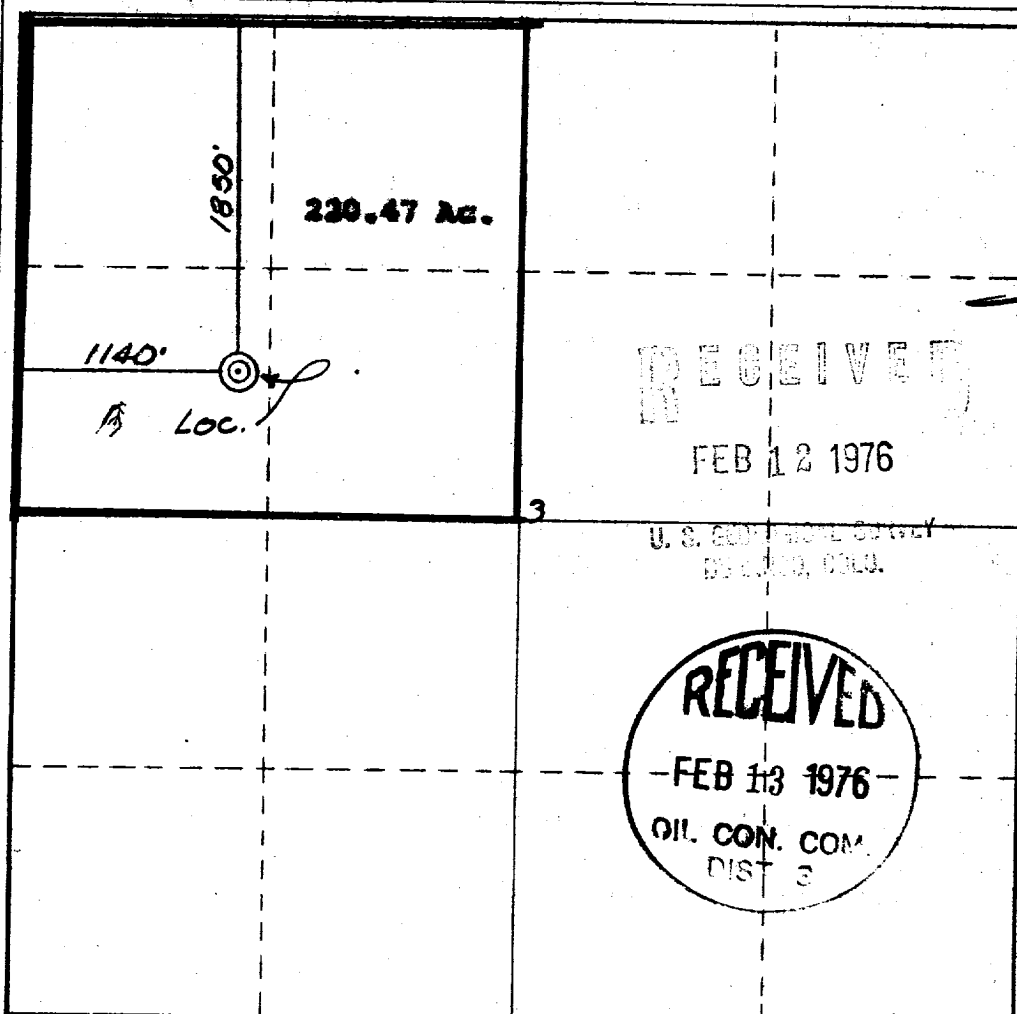
~~Pictured Cliffs~~ ~~So. Blanco Pictured Cliffs~~

1. Outline the acreage dedicated to the subject well by colored pencil or hachure marks on the plat below.
2. If more than one lease is dedicated to the well, outline each and identify the ownership thereof (both as to working interest and royalty).
3. If more than one lease of different ownership is dedicated to the well, have the interests of all owners been consolidated by communitization, unitization, force-pooling, etc?

☐ Yes ☐ No If answer is "yes," type of consolidation _____

If answer is "no," list the owners and tract descriptions which have actually been consolidated. (Use reverse side of this form if necessary.) _____

No allowable will be assigned to the well until all interests have been consolidated (by communitization, unitization, forced-pooling, or otherwise) or until a non-standard unit, eliminating such interests, has been approved by the Commission.

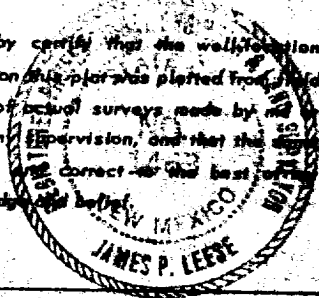


CERTIFICATION

I hereby certify that the information contained herein is true and complete to the best of my knowledge and belief.

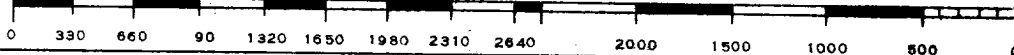
Name _____
 Position **Donal E. Walsh, P.E.**
President, Union Engineering & Prod. Corp.
 Date **February 11, 1976**

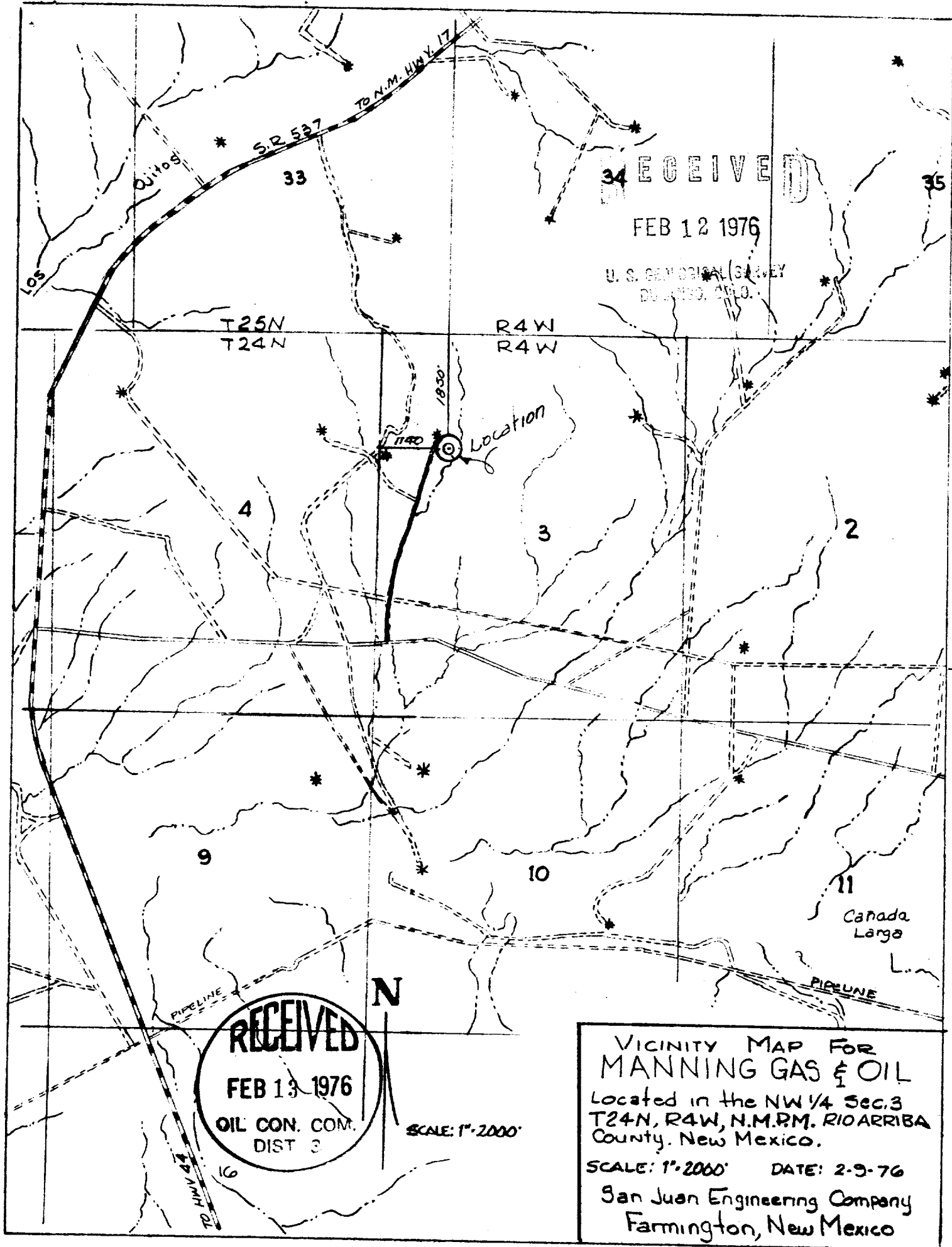
I hereby certify that the well location shown on this plat was plotted from field notes of actual surveys made by me under my supervision, and that this data is true to the best of my knowledge and belief.



Date Surveyed **9 February, 1976**
 Registered Professional Engineer and/or Land Surveyor
James P. Leese

Certificate No. **1463**





RECEIVED

FEB 12 1976

U.S. GEOLOGICAL SURVEY
DULLES, CALIF.

T25N
T24N

R4W
R4W

Location

RECEIVED
FEB 13 1976
OIL CON. COM.
DIST 3

SCALE: 1"=2000'

VICINITY MAP FOR
MANNING GAS & OIL
Located in the NW 1/4 Sec. 3
T24N, R4W, N.M.P.M. RIO ARriba
County, New Mexico.
SCALE: 1"=2000' DATE: 2-9-76
San Juan Engineering Company
Farmington, New Mexico