

UNITED STATES  
DEPARTMENT OF THE INTERIOR  
GEOLOGICAL SURVEY

## APPLICATION FOR PERMIT TO DRILL, DEEPEN, OR PLUG BACK

## 1a. TYPE OF WORK

DRILL ☒DEEPEN ☐PLUG BACK ☐

## b. TYPE OF WELL

OIL  
WELL ☐GAS  
WELL ☒

OTHER

SINGLE  
ZONE ☐MULTIPLE  
ZONE ☐

## 2. NAME OF OPERATOR

Manning Gas &amp; Oil Company

## 3. ADDRESS OF OPERATOR

1660 Lincoln St., Suite 2502, Denver, Colorado 80203

## 4. LOCATION OF WELL (Report location clearly and in accordance with any State requirements.)\*

At surface

1850' FSL, 790' FEL

At proposed prod. zone

Same

## 14. DISTANCE IN MILES AND DIRECTION FROM NEAREST TOWN OR POST OFFICE\*

## 15. DISTANCE FROM PROPOSED\*

LOCATION TO NEAREST  
PROPERTY OR LEASE LINE, FT.  
(Also to nearest drlg. unit line, if any)

1850'

18. DISTANCE FROM PROPOSED LOCATION\*  
TO NEAREST WELL, DRILLING, COMPLETED,  
OR APPLIED FOR, ON THIS LEASE, FT.

1585'

## 16. NO. OF ACRES IN LEASE

---

## 19. PROPOSED DEPTH

3200

17. NO. OF ACRES ASSIGNED  
TO THIS WELL

160

## 20. ROTARY OR CABLE TOOLS

Rotary

## 21. ELEVATIONS (Show whether DF, RT, GR, etc.)

6795' GL

## 22. APPROX. DATE WORK WILL START\*

## 23.

## PROPOSED CASING AND CEMENTING PROGRAM

SIZE OF HOLE	SIZE OF CASING	WEIGHT PER FOOT	SETTING DEPTH	QUANTITY OF CEMENT
12-1/4"	8-5/8"	24.0	120'	150 sx
7-7/8"	4-1/2"	10.50	3200'	100 sx

It is proposed to drill this well with rotary tools using drilling mud for circulation through the Pictured Cliffs Formation. All possible production intervals in the Pictured Cliffs will be completed.

The SE/4 of Section 11 is dedicated to this well.

RECEIVED  
AUG 18 1976

COM.

Gas is dedicated

IN ABOVE SPACE DESCRIBE PROPOSED PROGRAM: If proposal is to deepen or plug back, give data on present productive zone and proposed new productive zone. If proposal is to drill or deepen directionally, give pertinent data on subsurface locations and measured and true vertical depths. Give blowout preventer program, if any.

For: Manning Gas &amp; Oil Co.

SIGNED

Ewell N. Walsh, P. E.

TITLE

President, Walsh Engineering  
& Production Corporation

DATE August 11, 1976

(This space for Federal or State office use)

PERMIT NO.

APPROVAL DATE

APPROVED BY

TITLE

DATE

CONDITIONS OF APPROVAL, IF ANY:

ok

\*See Instructions On Reverse Side

**NEW MEXICO OIL CONSERVATION COMMISSION  
WELL LOCATION AND ACREAGE DEDICATION PLAT**

Form C-102  
Supersedes C-128  
Effective 1-1-65

All distances must be from the outer boundaries of the Section.

Operator <b>Manning Gas &amp; Oil Co.</b>		Lease <b>Apache</b>		Well No. <b>17</b>
Unit Letter <b>I</b>	Section <b>11</b>	Township <b>24N</b>	Range <b>1W</b>	County <b>Rio Arriba</b>

Actual Footage Location of Well:

<b>1850</b>	feet from the <b>South</b>	line and	<b>790</b>	feet from the <b>East</b>	line
Ground Level Elev. <b>6795</b>	Producing Formation <b>Pictured Cliffs</b>	Pool <b>South Blanco Pictured Cliffs</b>	Dedicated Acreage: <b>160</b> Acres		

1. Outline the acreage dedicated to the subject well by colored pencil or hachure marks on the plat below.
2. If more than one lease is dedicated to the well, outline each and identify the ownership thereof (as to working interest and royalty).
3. If more than one lease of different ownership is dedicated to the well, have the interests of all owners been consolidated by communitization, unitization, force-pooling, etc?

☐ Yes ☐ No If answer is "yes," type of consolidation \_\_\_\_\_

If answer is "no," list the owners and tract descriptions which have actually been consolidated. (Use reverse side of this form if necessary.) \_\_\_\_\_

No allowable will be assigned to the well until all interests have been consolidated (by communitization, unitization, forced-pooling, or otherwise) or until a non-standard unit, eliminating such interests, has been approved by the Commission.

**CERTIFICATION**

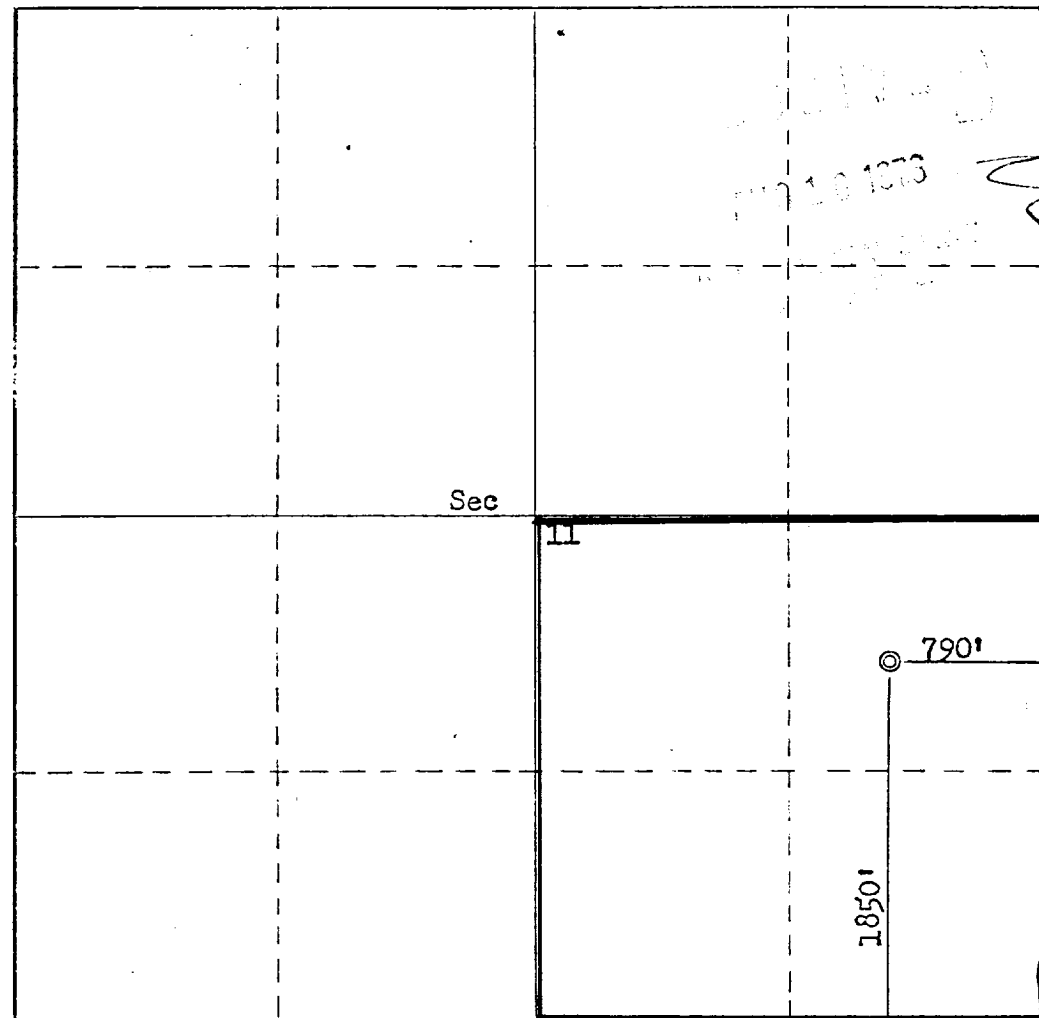
I hereby certify that the information contained herein is true and complete to the best of my knowledge and belief.

*Ewell N. Walsh*  
**Fort Manning Gas & Oil Co.**

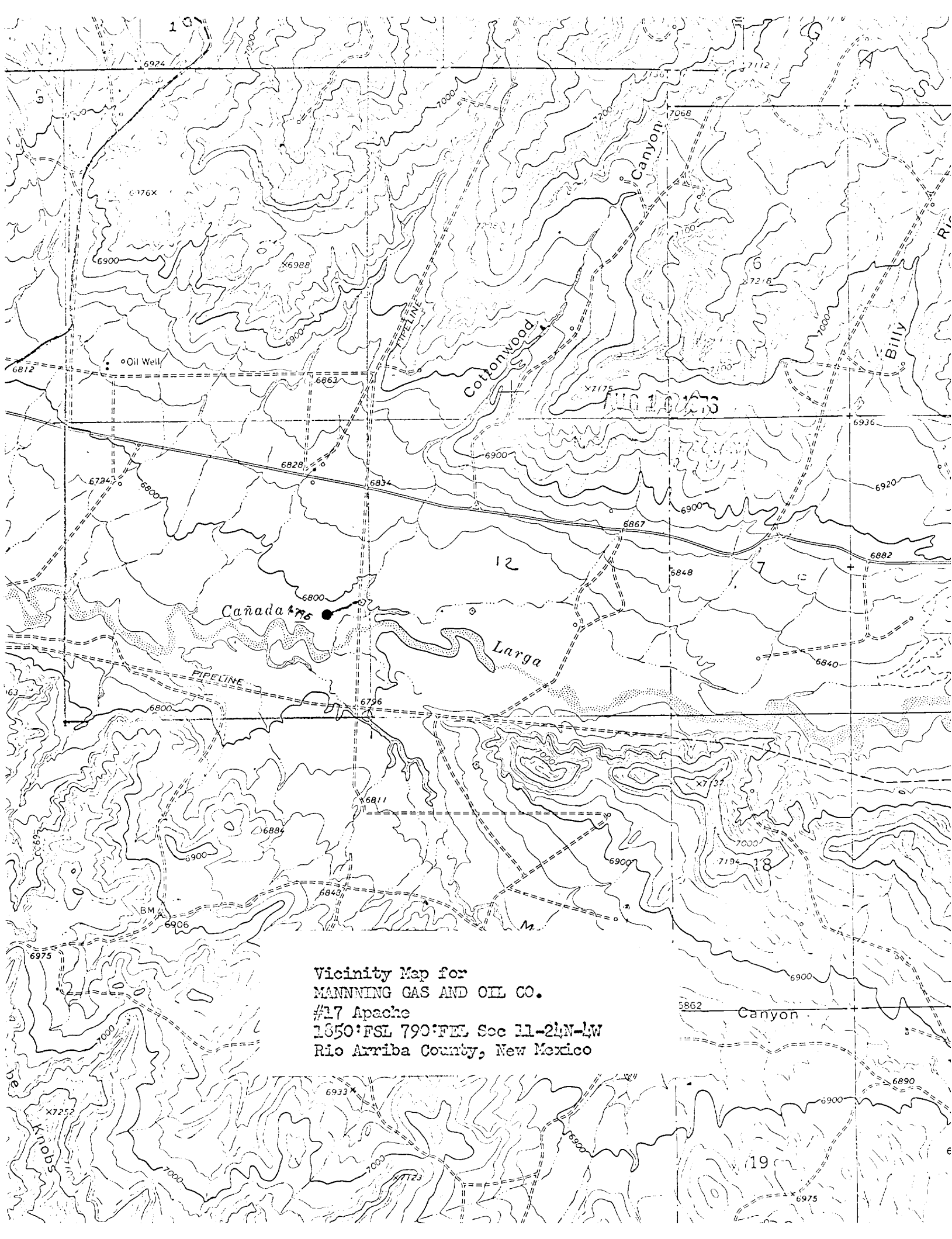
Name  
**Ewell N. Walsh, P. E.**  
Position  
**President, Walsh Engr.**  
Company  
**& Production Corporation**  
Date  
**August 11, 1976**

I hereby certify that the well location shown on this plat was plotted from field notes of actual surveys made by me or under my supervision, and that the same is true and correct to the best of my knowledge and belief.

Date Surveyed  
**August 10, 1976**  
Registered Professional Engineer and/or Land Surveyor  
*Fred B. Ferr Jr.*  
**Fred B. Ferr Jr.**  
Certificate No.  
**3950**



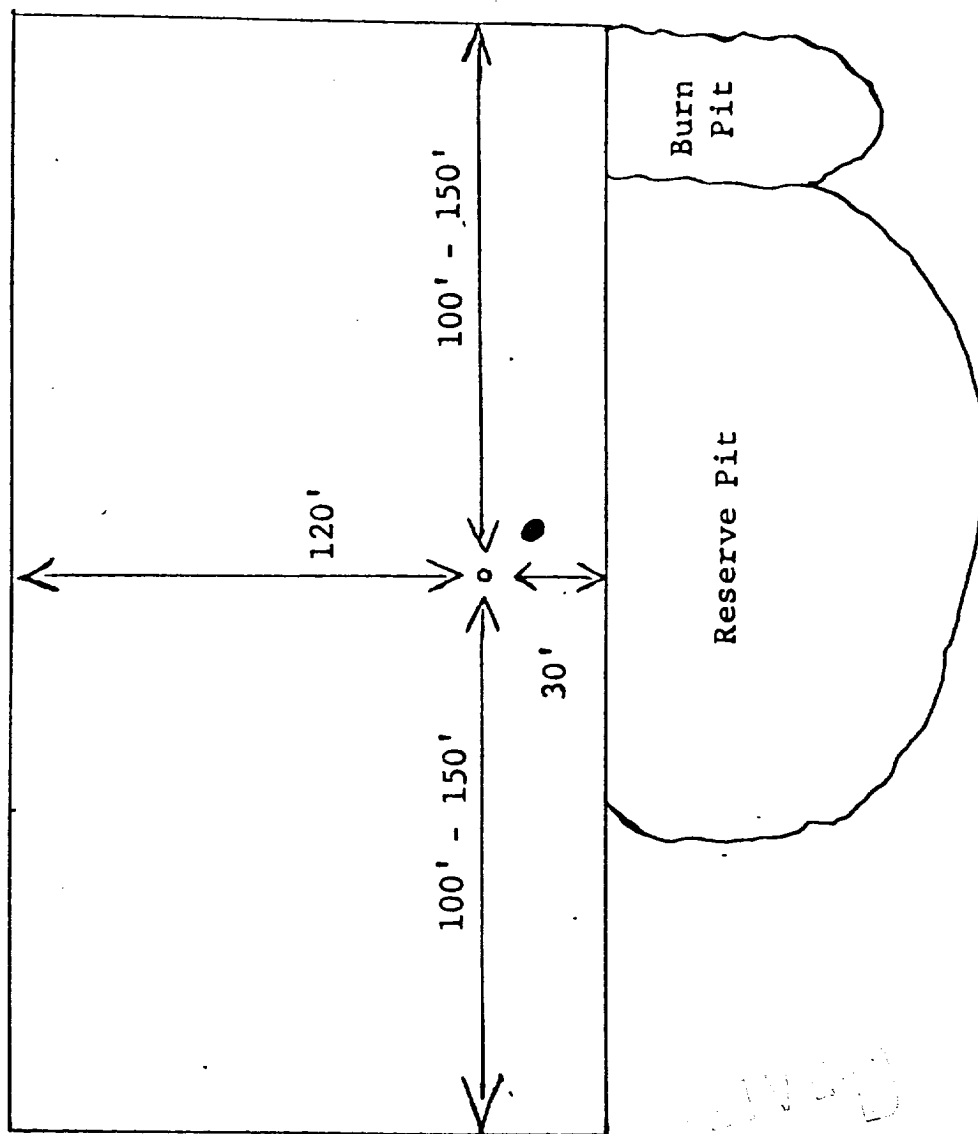
0 330 660 990 1320 1650 1980 2310 2640 2000 1500 1000 500 0



Vicinity Map for  
MANNING GAS AND OIL CO.  
#17 Apache  
1850:FSL 790:FEL Sec 11-24N-LW  
Rio Arriba County, New Mexico

Manning Gas and Oil Company  
Apache No. 17  
1850' FSL, 790' FEL, Sec. 11-T24N-R4W  
Rio Arriba County, N.M.

DEVELOPMENT PLAN



RECEIVED  
FEB 10 1975  
FEDERAL BUREAU OF INVESTIGATION

DEVELOPMENT PLAN  
MANNING GAS AND OIL COMPANY

APACHE NO. 17

1. Existing roads shown on attached plat.
2. Planned access from existing road is approximately 600' to new location.
3. Location - Apache No. 17  
1850' FSL, 790' FEL  
Section 11-T24N-R4W  
Rio Arriba County, New Mexico
4. No additional well is planned on this lease at this time.
5. Production equipment or storage facilities proposed for the well will be installed on location.
- 6.
7. Waste materials will be buried on location or in reserve pit.
8. No permanent camp is planned. A trailer house will be used on location during drilling process.
9. No airstrip proposed.
10. See attached plat for layout.
11. Pits will be filled, location cleaned up, and area not in use for producing well will be reseeded using broadcast method of planting.

AUG 16 1973

SUPPLEMENT TO  
DEVELOPMENT PLAN

MANNING GAS AND OIL COMPANY  
APACHE NO. 17 .

12. Lessee's or operator's representative.

Ewell N. Walsh: 325-8203; Radio Dispatch 325-1873, Car 620.  
Address: P. O. Box 254, Farmington, New Mexico 87401

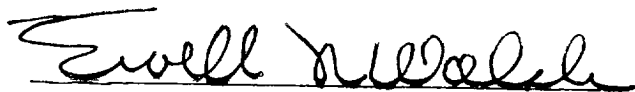
13. CERTIFICATION:

I hereby certify that I, or persons under my direct supervision, have inspected the proposed drillsite and access route; that I am familiar with the conditions which presently exist; that the statements made in this plan are, to the best of my knowledge, true and correct; and, that the work associated with the operations proposed herein will be performed by:

Aztec Well Servicing Co.

and its contractors and subcontractors in conformity with this plan and the terms and conditions under which it is approved.

August 13, 1976

  
Ewell N. Walsh, P.E., President,  
Walsh Engineering & Production  
Corporation

RECEIVED

AUG 13 1976

U.S. DEPARTMENT OF THE INTERIOR

MANNING GAS AND OIL COMPANY  
APACHE NO. 17  
SE/4 Sec.11-T24N-R4W  
Rio Arriba County, N.M.

Seven Point Well Control Program

1. Surface Casing.  
See Application for Permit to Drill.
2. Spools and Flanges.
  - A. Surface Casing - Screwed, Series 600, 2000 psi W.P.
  - B. Production, Screwed, Series 600, 2000 psi W.P.
  - C. Tubing Head - Series 600, 2000 psi W.P.
3. Intermediate Casing.  
None
4. Blowout Preventers  
Production Hole - 10", 3000 psi
5. Additional Equipment (If necessary)
  - A. Bit Float
  - B. Sub with Valve for  
drill pipe.
6. Anticipated Bottom Hole Pressure.  
1000 psi. Current mud program is for 9.2 lb./gas mud with hydrostatic head of 1500 psi at 3200 feet. Mud weight will be increased if necessary for higher pressures.
7. Drilling Fluid.  
Low solids. Low water Loss.

512 1 1373

*well file*

PETROLEUM ENGINEERING  
RESERVOIR STUDIES  
EVALUATIONS  
GEOLOGICAL STUDIES

EWELL N. WALSH, P.E.  
President

WALSH  
ENGINEERING & PRODUCTION  
CORPORATION  
EXECUTIVE BLDG. - 413 W. MAIN  
P. O. BOX 254  
FARMINGTON, NEW MEXICO  
87401

LEASE MANAGEMENT  
CONTRACT PUMPING  
DRILLING SUPERVISION  
WORKOVER SUPERVISION

TELEPHONE 325-8203

August 11, 1976

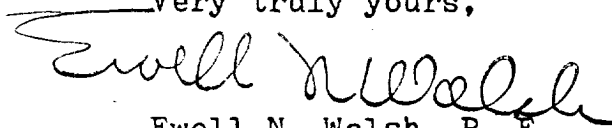
Mr. Joe Ramey  
Secretary - Director  
New Mexico Oil Conservation Commission  
Santa Fe, New Mexico 87501

Ref: Manning Gas & Oil Company  
Apache No. 17  
Unit I-Sec.11-T24N-R4W  
Rio Arriba County, New Mexico

Dear Mr. Ramey,

Please be advised that the acreage dedicated to the above-referred-to well, SE/4 - 160 acres, Sec11-T24N-R4W, is dedicated to Northwest Pipeline Corporation, gas purchaser.

Very truly yours,

  
Ewell N. Walsh, P. E.  
President

ENW;dw  
cc:U.S.G.S., Durango  
Manning Gas & Oil Co.  
NMOCC, Aztec  
Northwest Production, El Paso  
Carl Matthews, E.P.N.G., Farmington

AUG 16 1976



PHONE 334-6191  
P. O. BOX "B"



WAYNE SANDEL  
PRESIDENT

AZTEC, NEW MEXICO 87401

HOLE DEVIATION AFFIDAVIT

Operator: Manning Gas & Oil Co.  
Well Name: Apache, Well No. 17.  
Description of Lease: 1850' fr 5 ln and 790' fr E ln,  
Section 11, Township 24N, Range 4W  
Rio Arriba County, New Mexico.

<u>FROM</u>	<u>TO</u>	<u>DEVIATION</u>
0'	155'	$\frac{1}{4}^{\circ}$
155'	755'	$\frac{1}{4}^{\circ}$
755'	1218'	$1^{\circ}$
1218'	1720'	$1\frac{1}{4}^{\circ}$
1720'	2199'	$1\frac{1}{2}^{\circ}$
2199'	2600'	$1\frac{3}{4}^{\circ}$
2600'	3100'	$1\frac{3}{4}^{\circ}$

I hereby swear or (affirm) that the statements made are  
a full and correct report.

AZTEC WELL SERVICING CO.

R. J. Young  
R.J. Young, Toolpusher

SWORN TO AND SUBSCRIBED BEFORE ME by R.J. Young,  
Toolpusher for AZTEC WELL SERVICING CO., this 13th day of  
September, 1976. To certify which witness my hand and seal of  
office.

Wayne Sandel  
Notary Public in and for  
San Juan County  
State of New Mexico

My commission expires 1-3-79.

