

UNITED STATES
DEPARTMENT OF THE INTERIOR
GEOLOGICAL SURVEY

APPLICATION FOR PERMIT TO DRILL, DEEPEN, OR PLUG BACK

1a. TYPE OF WORK

DRILL ☒DEEPEN ☐PLUG BACK ☐

b. TYPE OF WELL

OIL
WELL ☐GAS
WELL ☒

OTHER

SINGLE
ZONE ☒MULTIPLE
ZONE ☐

2. NAME OF OPERATOR

Amerada Hess Corporation

3. ADDRESS OF OPERATOR

Box 2040 - Tulsa, Oklahoma 74102 Att'n: Drlg. Svcs.

4. LOCATION OF WELL (Report location clearly and in accordance with any State requirements.)*

At surface

1750' FNL, 1650' FEL

At proposed prod. zone

Same

14. DISTANCE IN MILES AND DIRECTION FROM NEAREST TOWN OR POST OFFICE*

Est. 20 miles NW of Lindrith N.M.

15. DISTANCE FROM PROPOSED*

LOCATION TO NEAREST
PROPERTY OR LEASE LINE, FT.
(Also to nearest drlg. unit line, if any)

16. NO. OF ACRES IN LEASE

2559.4

18. DISTANCE FROM PROPOSED LOCATION*
TO NEAREST WELL, DRILLING, COMPLETED,
OR APPLIED FOR, ON THIS LEASE, FT.

19. PROPOSED DEPTH

7400'

21. ELEVATIONS (Show whether DF, RT, GR, etc.)

Est. 6555' GR

23.

PROPOSED CASING AND CEMENTING PROGRAM

SIZE OF HOLE	SIZE OF CASING	WEIGHT PER FOOT	SETTING DEPTH	QUANTITY OF CEMENT
12 $\frac{1}{4}$ "	9-5/8"	32.3	350	250 Sx.
7-7/8"	5-1/2"	15.5 & 17	7400	850 Sx.

Plan to drill a 12 $\frac{1}{4}$ " hole from surface to 350', run, set and cement 9-5/8" OD Csg. (New) at 350' and cement with 250 sx. cmt. (Circ.cement), WOC, drill out from under surf. csg. with 7-7/8" bit to a proposed TD of 7400' +/- or a sufficient depth to test the Dakota Gas Zone. Log well and if productive complete in the Dakota Gas Zone. Set New 5 $\frac{1}{2}$ " OD Csg. and cement with 850 sx..

No cores or drill stem tests are anticipated.

Mud program is to use low vis. and low water loss mud out from under surface csg. to TD with Vis. 60/70 for logging.

Blowout equipment program, NTL-6 Surface usage plan, Location maps, plats and drilling rig layout are attached.

IN ABOVE SPACE DESCRIBE PROPOSED PROGRAM: If proposal is to deepen or plug back, give data on present productive zone and proposed new productive zone. If proposal is to drill or deepen directionally, give pertinent data on subsurface locations and measured and true vertical depths. Give blowout preventer program, if any.

24.

SIGNED

H.O. Porter

TITLE Admin.Assist. Drlg. Svcs.

DATE 3/29/77

(This space for Federal or State office use)

PERMIT NO.

APPROVAL DATE

APPROVED BY

TITLE

DATE

CONDITIONS OF APPROVAL, IF ANY:

Work Copy

30-039-21372

5. LEASE DESIGNATION AND SERIAL NO.

Lse.Contract #149

6. IF INDIAN, ALLOTTEE OR TRIBE NAME

Jic. Apache

7. UNIT AGREEMENT NAME

8. FARM OR LEASE NAME

Jic. Apache "F"

9. WELL NO.

14

10. FARM AND POOL, OR WILDCAT

Blanco: Dakota

11. SEC., T., R., M., OR BLK.
AND SURVEY OR AREA

Sec. 18, T25N, R5W

12. COUNTY OR PARISH

13. STATE

Rio Arriba

New Mexico

17. NO. OF ACRES ASSIGNED
TO THIS WELL

E 320 Dakota - 160-PC

20. ROTARY OR CABLE TOOLS

Rotary

22. APPROX. DATE WORK WILL START*

April 20, 1977

NEW MEXICO OIL CONSERVATION COMMISSION
WELL LOCATION AND ACREAGE DEDICATION PLAT

Form C-102
Supersedes C-128
Effective 1-1-65

All distances must be from the outer boundaries of the Section

Operator Amerada Hess Corporation			Lease Jicarilla Apache F		Well No. 14
Unit Letter G	Section 18	Township 25N	Range 5W	County Rio Arriba	

Actual Footage Location of Well:

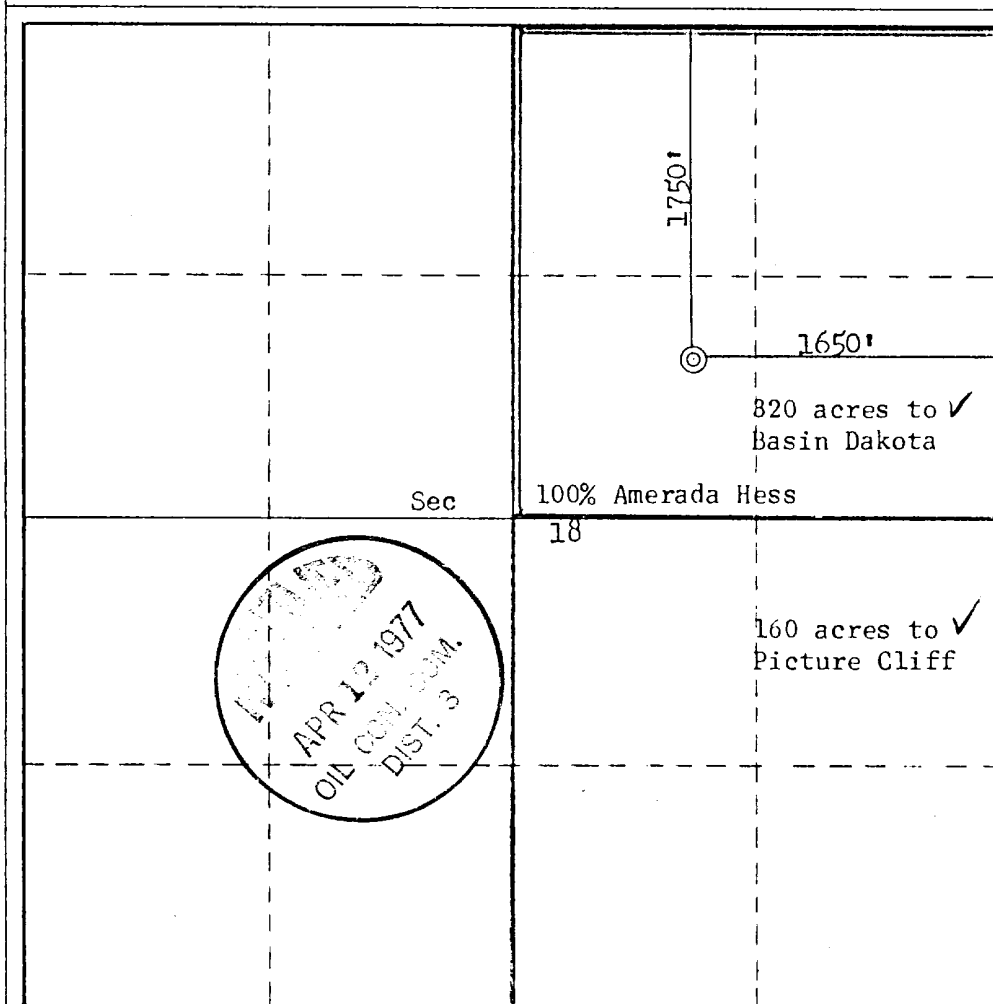
1750 feet from the North line and 1650 feet from the East line	
Ground Level Elev. 6553	Producing Formation Basin Dakota Picture Cliff
Pool Basin Dakota Picture Cliff	Dedicated Acreage: see below Acres

1. Outline the acreage dedicated to the subject well by colored pencil or hatchure marks on the plat below.
2. If more than one lease is dedicated to the well, outline each and identify the ownership thereof (both as to working interest and royalty).
3. If more than one lease of different ownership is dedicated to the well, have the interests of all owners been consolidated by communitization, unitization, force-pooling, etc?

☐ Yes ☐ No If answer is "yes," type of consolidation N/A

If answer is "no," list the owners and tract descriptions which have actually been consolidated. (Use reverse side of this form if necessary.) N/A

No allowable will be assigned to the well until all interests have been consolidated (by communitization, unitization, forced-pooling, or otherwise) or until a non-standard unit, eliminating such interests, has been approved by the Commission.



CERTIFICATION

I hereby certify that the information contained herein is true and complete to the best of my knowledge and belief.

H. O. Porter

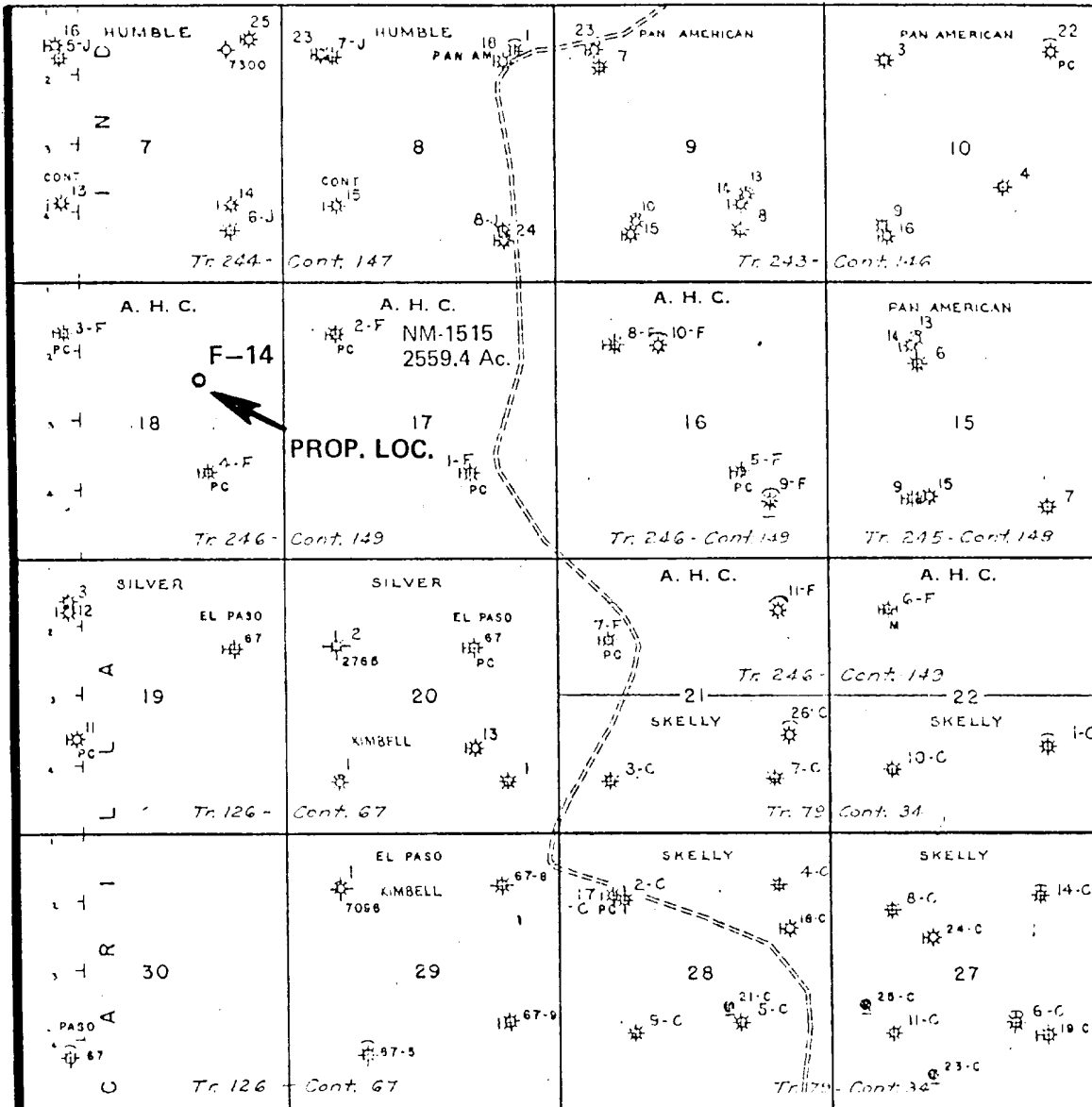
Name
H. O. Porter
Position
Admin. Assist. Drlg. Svcs.
Company
Amerada Hess Corporation
Date
February 9, 1977

I hereby certify that the well location shown on this plat was plotted from field notes of actual surveys made by me or under my supervision, and that the same is true and correct to the best of my knowledge and belief.

Date Surveyed
February 3, 1977
Registered Professional Engineer and/or Land Surveyor
Fred E. Kerr Jr.
Certificate No.
3950

0 330 660 990 1320 1650 1980 2310 2640 2000 1500 1000 500 0

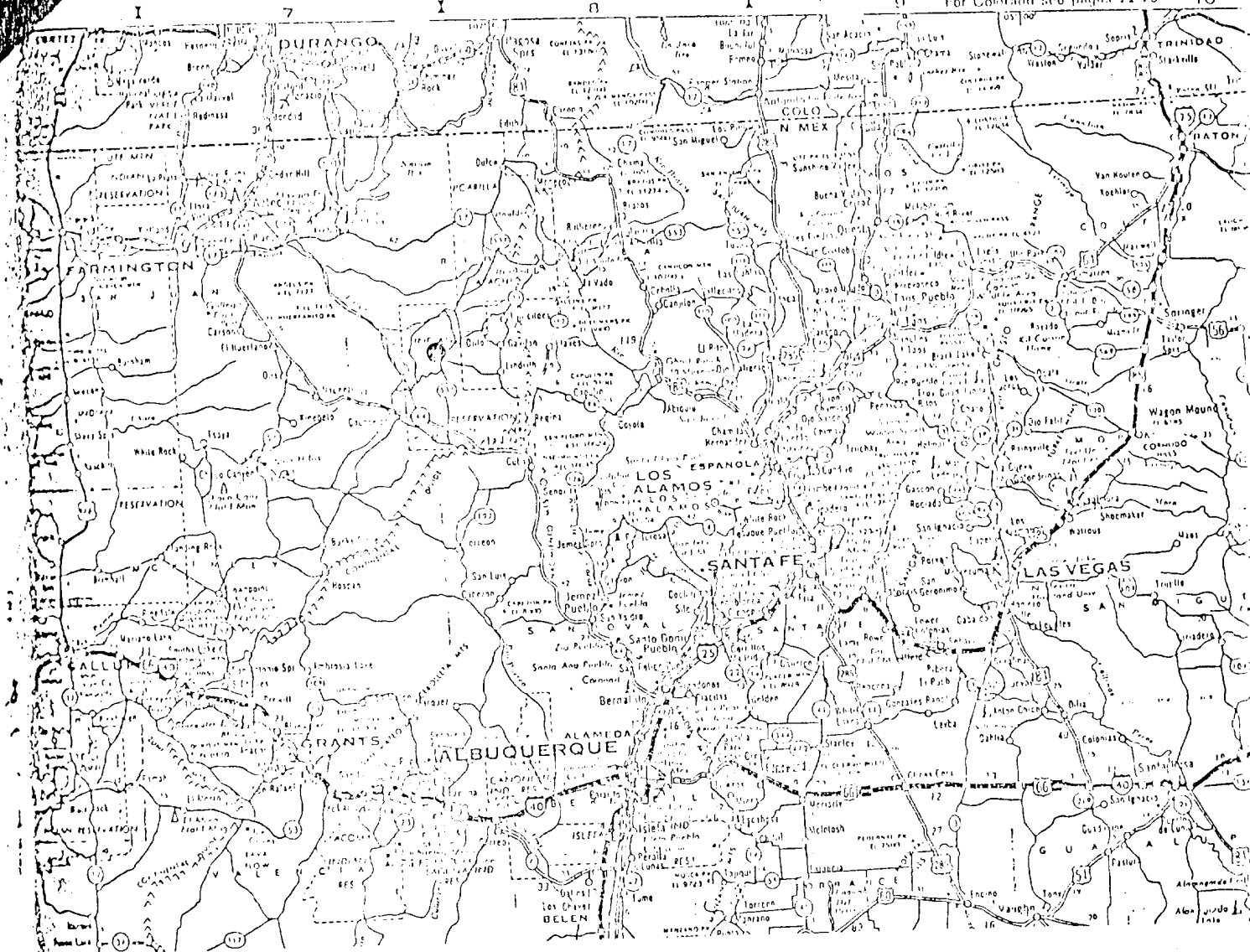
R 5 W

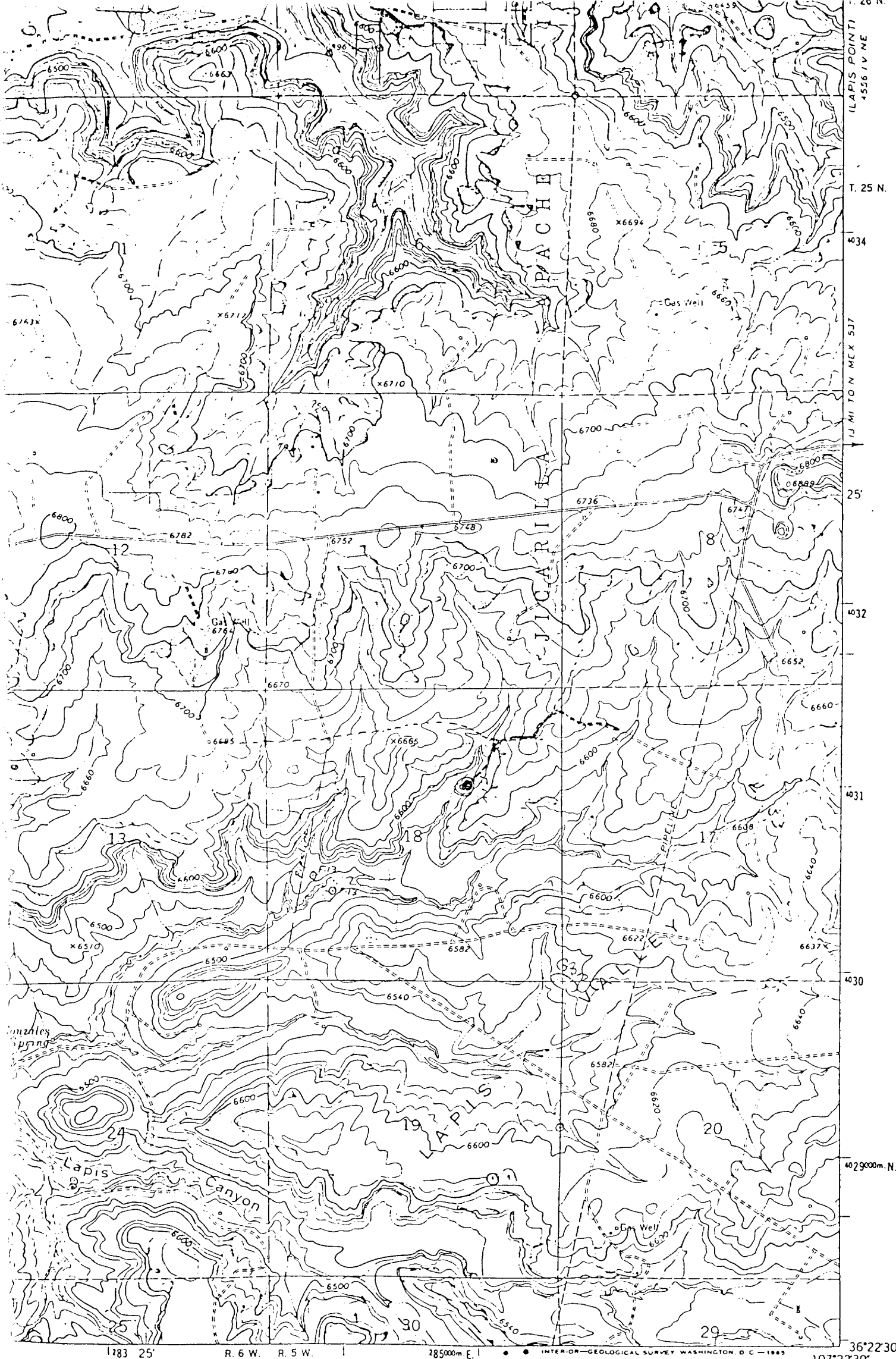


T
25
N

JICARILLA APACHE — F

Rio Arriba County, New Mexico





NEW MEXICO

Vicinity Map for
AMERADA HESS CORPORATION
#F-14 Jicarilla Apache
1750'FNL 1650'FEL Sec 18-25N-5W
Rio Arriba County, New Mexico

107°22'30" W.
36°22'30" N.

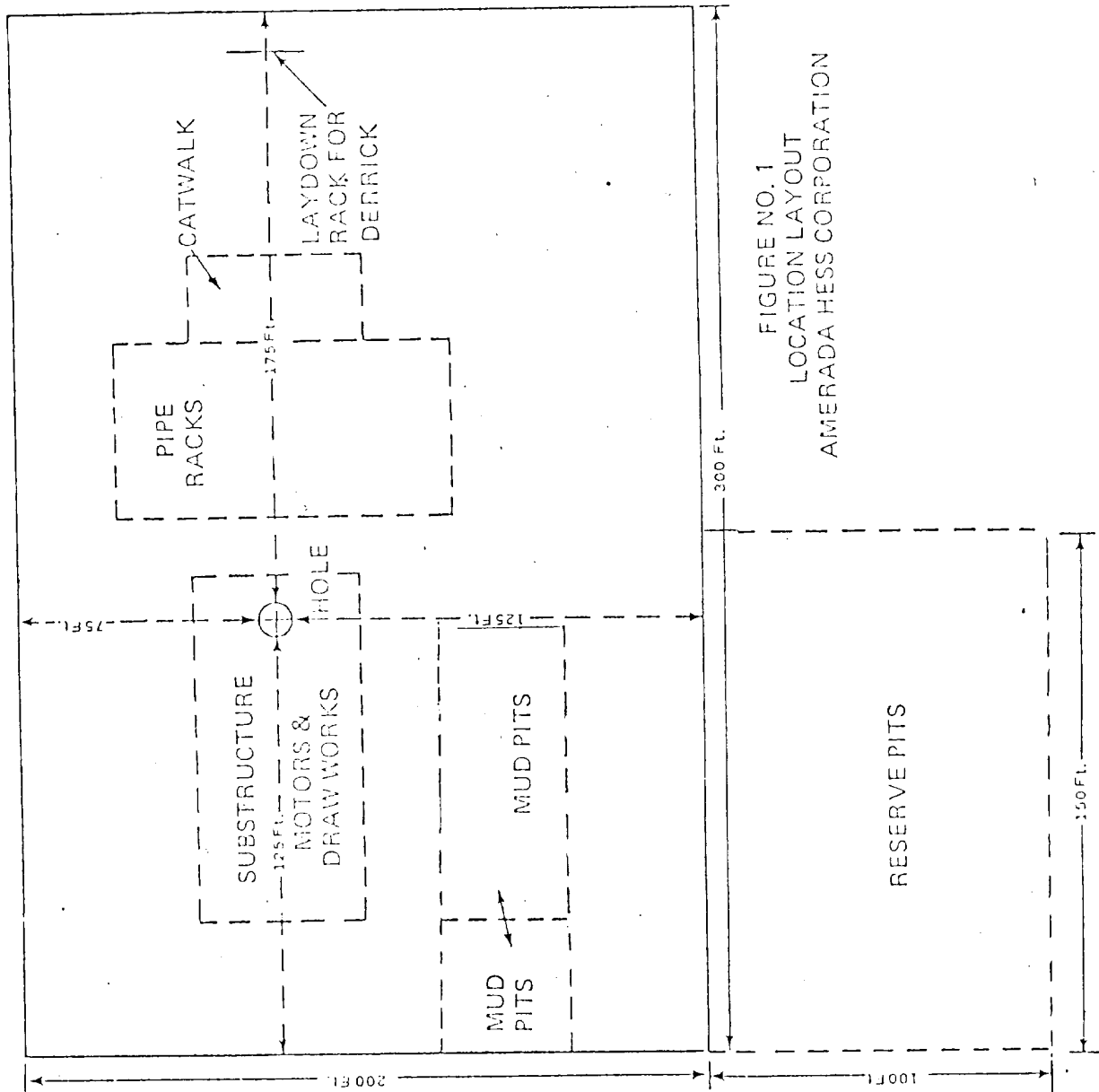


FIGURE NO. 1
LOCATION LAYOUT
AMERADA HESS CORPORATION

SCALE 1" = 50'

AMERADA HESS CORPORATION

STANDARD PROCEDURES

FOR

BLOW OUT PREVENTION

AND CONTROL

EQUIPMENT

The following blow out prevention, monitoring and control equipment is to be installed on all AHC operated drilling wells.*

1. Minimum of 2 ram type B.O.P.'s with pipe rams in lower preventor and blind rams in the upper preventor with a flow cross flanged between. A third B.O.P. should be required when operating with a tapered drill string. The B.O.P.'s should have at least the same pressure rating as the well head on which they are installed. The preventors are to be operated hydraulically by an adequate opening and closing system. Manual hand wheels with extensions are to be attached to the B. O. P. 's.
2. 1-bag type B.O.P., hydraulically operated as above, with an element in good condition, and to be of at least the same pressure rating as the ram type B.O.P. -- up to 10,000 PSI.
3. B.O.P. manifold with hydraulic and manual inside valves and with two choke lines and one open line with proper block valves. All piping and valves to be of at least the same pressure rating as the B.O.P. stack.
4. Pit level monitoring device with at least one read out device at the driller's station.
5. Flow rate monitoring device with pump stroke counters connected to both pumps and with automatic trip fill up device with total read out device at the driller's station.

In addition to the equipment listed above, the following equipment is to be installed on any AHC operated drilling well that expects to drill an abnormally pressured zone, or is considered a wildcat well:

6. Hydraulically operated adjustable choke of at least the same pressure rating as the manifold to which it is connected.
7. Adequate mud gas atmospheric separator and mechanical degasser.
8. Automatic mud weighing device with chart read out recording at least the return mud weight.

(EQUIPMENT-cont'd.)

9. Chart read out of the flow rate, and pit volume totalizer devices listed above.
10. At least a portable mud gas detector and shale density kit, or when conditions or expectations warrant -- a complete mud logging unit is to be installed.
11. Adequate mixing facilities and storage for bulk barite materials.

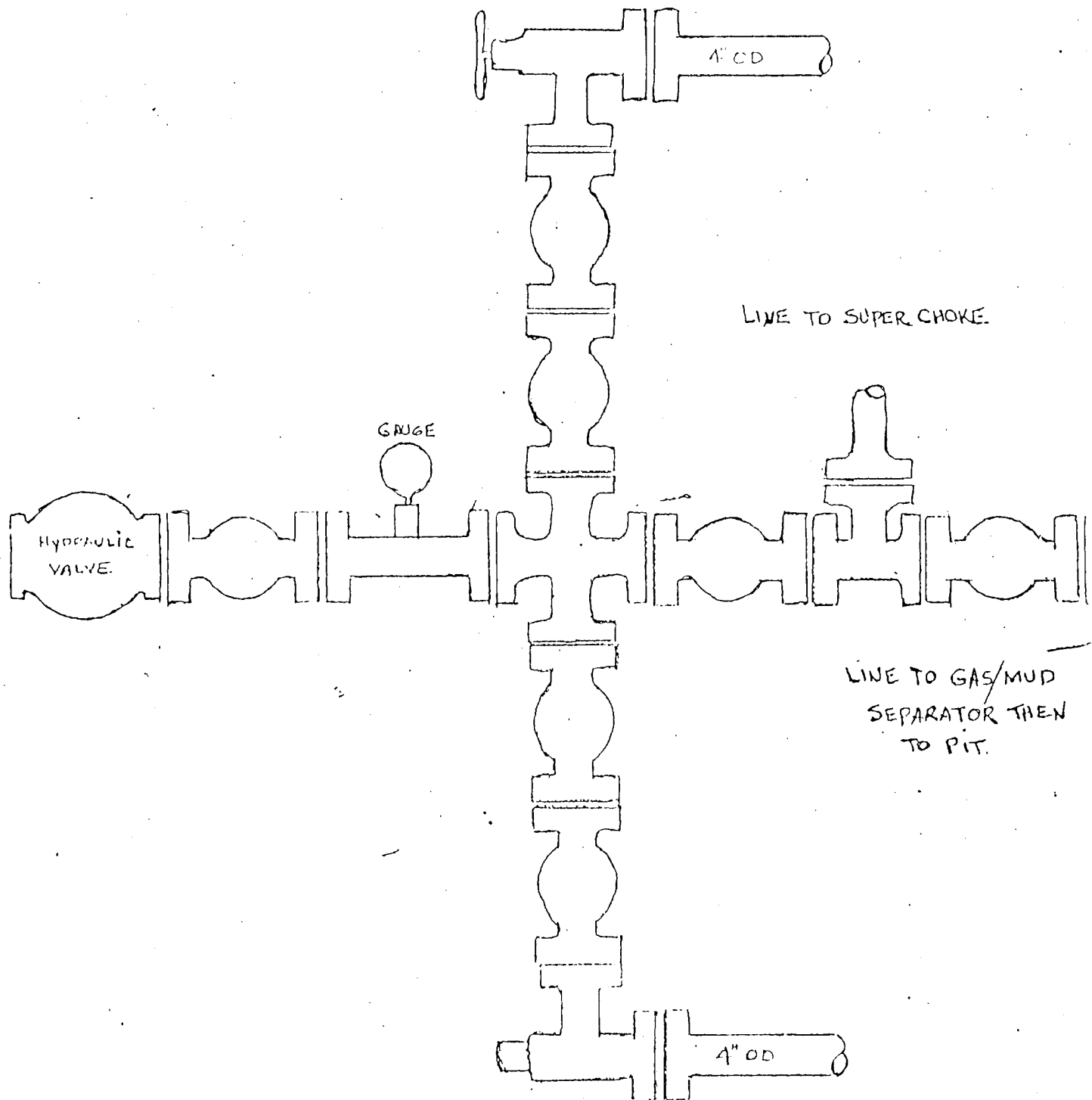
* Items 1 through 5 may be subject to some variations, as unusual conditions arise.

PRECAUTIONS

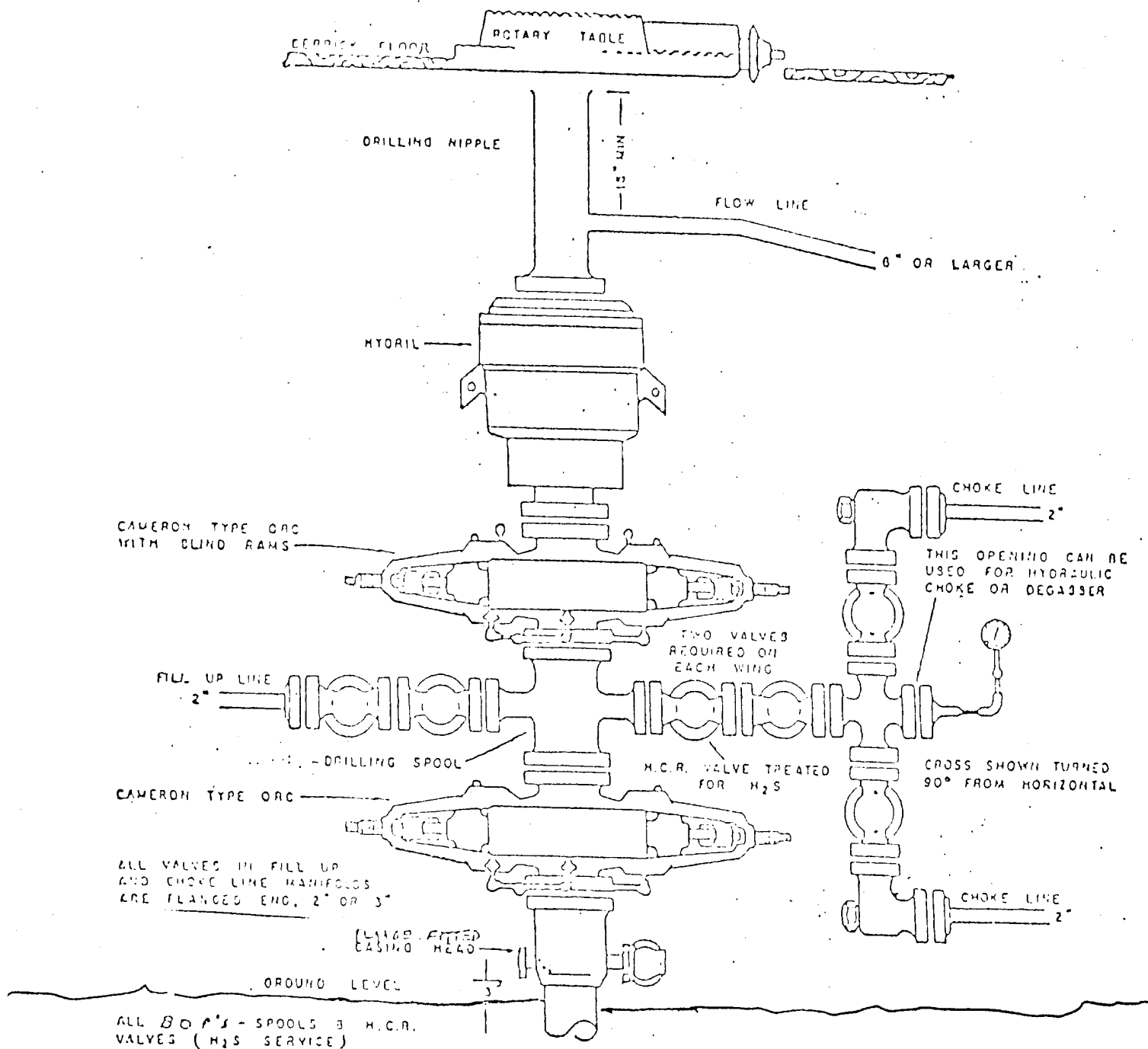
1. Properly rated and perfectly operating blow out preventors and control equipment are installed on the well.
2. At least the following devices are installed and monitored: Pit volume totalizer, flow rate recorder, and trip fill up counter. In addition, pump strokes, pump pressure, mud weight, and bit weight are analyzed for unusual values. On some of the more complex wells, an adjustable choke, degasser, mud weighing device, mud logging unit and bulk barite facilities will also be installed and monitored.
3. Drilling breaks are checked for flow at 3 feet and 10 feet into the break. If the break is of considerable magnitude, it is circulated out, especially if drilling in the proximity of a transition zone.
4. Gas cut mud is considered as a warning, and its cause and extent examined to satisfaction.
5. The hole is filled each 5 stands while pulling out of the hole and pump strokes and pit level decrease are measured and compared against calculated displacement values.
6. Formation pore pressures and fracture pressures are calculated from electric logs and used to aid in proper casing seat selection and mud weight ranges.

CHOKE. MANIFOLD ASSEMBLY
5000 PSI W.P. 10,000

ADJUSTABLE CHOKE.



POSITIVE CHOKE.



AMERADA HESS CORPORATION'S

LAYOUT PLAN FOR REQUIRED
BLOWOUT PREVENTER
ASSEMBLY

PREPARATIONS

1. Maximum safe pressure valves are calculated and made known for surface equipment and all casing strings, along with fracture pressure at deepest casing shoe or weakest exposed formation.
2. Conduct regularly scheduled (every 5-7 days or as conditions warrant) pressure tests of blow out preventors and control equipment to maximum working pressure with clear water. Check flange bolts for tightness.
3. Work blow out preventors, hydraulic valves, and adjustable choke every trip and pump through choke manifold every other trip.
4. Have choke lines tied into a stack (atmospheric) separator.
5. Establish who has the responsibility for detecting a kick and shutting the well in. This should include checking fill up on trips and watching the hole while other operations are being conducted.
6. Establish who will do what during the killing operations explain to all why each job is important to the success of killing the well.
7. Conduct surprise drills on kick detection and shut in procedures.
8. For maximum safety it is important that pipe rams be placed in the bottom ram type preventor so the well can be shut in if something cuts out in the upper section of the B.O.P. stack or if it is necessary to change rams.
9. Use clean hydraulic oil in the accumulator unit and check level weekly.
10. Each person who is to operate the hydraulic adjustable choke should be completely familiar with the mechanics and operation of the choke.
11. In order to provide necessary data for the killing operation, pump pressures are recorded each tour for pump speeds of 20 and 30 strokes per minute. This data is also repeated if the mud weight is increased during a tour.

Amerada Hess Corporation
J. Apache "F" #14
1750' FNL, 1650' FEL
Sec. 18, T25N, R5W,
Rio Arriba, County,
New Mexico

This plan is submitted with the Application for Permit to Drill the above well. The purpose of the plan is to describe the location of the proposed well, the proposed construction activities and operations plan, the magnitude of necessary surface disturbance involved and the procedures to be followed in rehabilitating the surface after completion of the operation so that a complete appraisal can be made of the environmental effects associated with the operation.

1. Existing Roads:

- A. See plat attached.
- B. Plat attached with map.
- C. Shown on Plat
- D. Shown on topo map
- E. shown on topo map

F. Well will be approx 1 mile off of main road. No repairs will have to be made to existing road, only grading to improve.

2. Planned access roads:

- A. Topo map shows existing roads and that approx. 1 mile of new road will have to be built to gain access to well site location plus adding a 24" x 30' culvert in one drainage area.

3. Location of existing wells:

- A. Plat of area, shows existing and/or wells to be drilled.
 - 1. No water wells.
 - 2. No abandoned wells.
 - 3. No TA Wells
 - 4. No disposal wells.
 - 5. Location shown for drilling well by AHC.

4. Location of Existing and/or proposed facilities:

- A. No existing facilities are in the immediate area, other than J. Apache "F" #13 which has its own tanks and flow lines.
- B. In event of producing well, as shown on topo map, tanks will be installed approx. 200' from well site, utilizing same pad designed and built to drill well.

5. Location and type of water supply:

- A. No water supply is available for drilling purposes. Water will be trucked to location and stored in lined pit.
- B. No water well is to be drilled.

6. Source of construction materials:

- A. No construction materials are anticipated to be needed for this well.

7. Method for handling of waste material:

- A. Drlg. cuttings will be disposed of in pits.
- B. Drlg. fluids will be allowed to evaporate in pits.
- C. Fluids produced during drilling operations will be put in pits.
- D. Current laws and regulations pertaining to disposal of human waste will be complied with.
- E. Garbage and other waste material will be fenced and destroyed in compliance with regulations.
- F. Location after drilling will be filled, leveled and reseeded.

8. Ancillary Facilities:

- A. No camps or airstrips are required.

9. Well site layout:

- A. See plat attached.
B. See plat attached.
C. See plat attached.
D. Pits are to be lined.

10. Plans for restoring surface:

- A. After completion of drilling, all areas will be cleaned, leveled and reseeded depending on weather as soon as possible.

11. Other information:

- A. Topography: Land located in small canyon. Southern end open and other sides bordered by sandstone ledges.
B. Low areas covered with sagebrush, junipers and pinyons and some grazing is in evidence.
C. None found in area.

12. Lessee's or Operators Representative:

Mr. George M. Lambert
Amerada Hess Corporation
Box 2040 Tulsa, Oklahoma 74102 Att'n: Drlg. Services

13. Certification:

I hereby certify that I, or persons under my direct supervision, have inspected the proposed drill site and access route. That I am familiar with the conditions that presently exist, that the statements made in this plan are the best of my knowledge true and correct, and, that the work associated with the operations ~~XXXXXX~~ proposed herein will be performed by Amerada Hess Corporation and its contractors and sub-contractors in conformity with this plan and the terms and conditions under which it is approved.

R. G. Straw by hys
R. G. Straw, Mgr. Drlg. Svcs.

AMERADA HESS CORPORATION
INTEROFFICE CORRESPONDENCE

TO: R. G. STRAW

FROM: L. A. STRICKLIN

SUBJECT: J. Apache "A" #10
J. Apache "F" #14
J. Apache "J" #2
J. Apache "H" Tract 2 #3
J. Apache "I" #4
J. Apache "I" #5
J. Apache "I" #6
Rio Arriba County, New Mexico

MEMO NO. LAS-77-021

DATE JANUARY 20, 1977

This is your authorization to stake, obtain permits, and build
roads and locations to drill the subject wells.

L. A. Stricklin
L. A. STRICKLIN

LAS:RGS:vp

TULSA

1977 JUN 24 PM 4:20

DRILLING SERVICES

DIS
VP
ENG <i>HP</i>
APAV
TED
JRW
DC
JH
WAL
ST
FILE

UNITED STATES
DEPARTMENT OF THE INTERIOR
GEOLOGICAL SURVEYSUBMIT IN TRIPLICATE*
(Other instructions on re-
verse side)Form approved.
Budget Bureau No. 42-R1424.

SUNDRY NOTICES AND REPORTS ON WELLS

(Do not use this form for proposals to drill or to deepen or plug back to a different reservoir.
Use "APPLICATION FOR PERMIT—" for such proposals.)

1. OIL WELL <input type="checkbox"/> GAS WELL <input checked="" type="checkbox"/> OTHER <input type="checkbox"/>	5. LEASE DESIGNATION AND SERIAL NO. Lse. Contract #149
2. NAME OF OPERATOR Amerada Hess Corporation	6. IF INDIAN, ALLOTTEE OR TRIBE NAME Jic. Apache
3. ADDRESS OF OPERATOR Box 2040 - Tulsa, Oklahoma 74102	7. UNIT AGREEMENT NAME
4. LOCATION OF WELL (Report location clearly and in accordance with any State requirements.* See also space 17 below.) At surface 1750' FNL, 1650' FEL	8. FARM OR LEASE NAME Jic. Apache "F"
14. PERMIT NO.	9. WELL NO. 14
15. ELEVATIONS (Show whether DF, RT, GR, etc.) 6555' G.R.	10. FIELD AND POOL, OR WILDCAT Otero: Dakota
	11. SEC., T., R., M., OR BLK. AND SURVEY OR AREA Sec. 18, T25N, R5W
	12. COUNTY OR PARISH Rio Arriba
	13. STATE New Mexico

16. Check Appropriate Box To Indicate Nature of Notice, Report, or Other Data

NOTICE OF INTENTION TO:

TEST WATER SHUT-OFF

FRACTURE TREAT

SHOOT OR ACIDIZE

REPAIR WELL

(Other)

PULL OR ALTER CASING

MULTIPLE COMPLETE

ABANDON*

CHANGE PLANS

SUBSEQUENT REPORT OF:

WATER SHUT-OFF

FRACTURE TREATMENT

SHOOTING OR ACIDIZING

(Other) Drilling Completion

REPAIRING WELL

ALTERING CASING

ABANDONMENT*

(NOTE: Report results of multiple completion on Well
Completion or Recompletion Report and Log form.)

17. DESCRIBE PROPOSED OR COMPLETED OPERATIONS (Clearly state all pertinent details, and give pertinent dates, including estimated date of starting any proposed work. If well is directionally drilled, give subsurface locations and measured and true vertical depths for all markers and zones pertinent to this work.)*

M.I. & R.U. Aztec Well Service Rig #124 and spudded 15" hole @ 3PM 7-1-77. Drilled 0' to 370'. RU, ran & cmt'd 8 jts. 9 5/8" OD 32.3# csg. set at 366' and cmt'd. w/350 sx. CI. "C" cement. Plug down @ 9AM 7-2-77. WOC. Backed out landing jt., installed 10" 3000# Gulfco type R.S. csg. head. TIH w/bit & tagged cement at 310'. Drilled cmt. & plug. Began drilling 8 3/4" hole under 9 5/8" surf. csg. and drilled to 7200' TD. RU Go-International and logged from 7200' to 2000' w/IEL, CDL, DDL. RD loggers Circ. & cond. hole, RU, ran & cmt'd. 182 jts. 5 1/2" OD 15.5# csg. set at 7198', and Howco cmt'd w/300 sx. 1st stage w/plug down at 3:30 AM 7-20-77. Press. to 1600#, held O.K. WOC. Howco cmt'd w/ 1040 sx. 2nd stage w/plug down at 3 PM 7-20-77. Cement circ., set 5 1/2" Gulfco type RS csg. slips in Gulfco 10" x 3000# type RS csg. head. Cut off 5 1/2" csg. & ND BOP's. Rig released at 3:00 PM 7-20-77. Final Report from Drlg. Svcs.

Well turned over to Prod. Dept. for completion

18. I hereby certify that the foregoing is true and correct

SIGNED

H. D. Porter

TITLE

Admn. Assist. Drlg. Svcs.

DATE

7-28-77

(This space for Federal or State office use)

APPROVED BY

TITLE

DATE

CONDITIONS OF APPROVAL, IF ANY:

*See Instructions on Reverse Side

INCLINATION REPORT

OPERATOR Amerada Hess Corporation ADDRESS Drawer D, Monument, New Mex. 88265
 LEASE J. Apache "F" WELL NO. 14 FIELD Basin Dakota
 LOCATION Unit G, Sec. 18, T25N, R5W, Rio Arriba County, New Mexico

DEPTH	DEVIATION
370'	1-1/4°
963'	1-1/4°
1524'	1-1/4°
2024'	1-1/4°
2448'	2-1/4°
3130'	1-3/4°
3542'	1-3/4°
4008'	1-1/2°
4511'	1-1/2°
5070'	1-1/2°
5560'	1-1/2°
6000'	1-1/2°
6510'	1-1/2°
6842'	1-1/2°
7200'	1-1/2°

I hereby certify that the above data as set forth is true and correct to the best of my knowledge.

Amerada Hess Corporation

By

E. B. Fisher
 Supv. Adm. Ser.

AFFIDAVIT:

Before me, the undersigned authority, appeared E. B. Fisher known to me to be the person whose name is subscribed herebelow, who, on making deposition, under oath states that he is acting for and in behalf of the operator of the well identified above, and that to the best of his knowledge and belief such well was not intentionally deviated from the true vertical whatsoever.

E. B. Fisher
 Affiant's Signature

Sworn and subscribed to in my presence on this the 27 day of July 1977.

M. J. O'Connell
 Notary Public in and for the County of Lea, State of New Mexico

Seal

My commission expires November 8, 1980



INCLINATION REPORT

OPERATOR Amerada Hess Corporation ADDRESS Drawer D, Monument, New Mex. 88265
 LEASE J. Apache "F" WELL NO. 14 FIELD Basin Dakota
 LOCATION Unit G, Sec. 18, T25N, R5W, Rio Arriba County, New Mexico

DEPTH	DEVIATION
370'	1-1/4°
963'	1-1/4°
1524'	1-1/4°
2024'	1-1/4°
2448'	2-1/4°
3130'	1-3/4°
3542'	1-3/4°
4008'	1-1/2°
4511'	1-1/2°
5070'	1-1/2°
5560'	1-1/2°
6000'	1-1/2°
6510'	1-1/2°
6842'	1-1/2°
7200'	1-1/2°

I hereby certify that the above data as set forth is true and correct to the best of my knowledge.

Amerada Hess Corporation

By

E. B. Fisher
 Supv. Adm. Ser.

AFFADAVIT:

Before me, the undersigned authority, appeared E. B. Fisher known to me to be the person whose name is subscribed herebelow, who, on making deposition, under oath states that he is acting for and in behalf of the operator of the well identified above, and that to the best of his knowledge and belief such well was not intentionally deviated from the true vertical whatsoever.

E. B. Fisher
 Affiant's Signature

Sworn and subscribed to in my presence on this the 27 day of July 19 77.

M. M. M. M. M.
 Notary Public in and for the County of Lea, State of New Mexico

Seal

My commission expires November 8, 1980

