

UNITED STATES
DEPARTMENT OF THE INTERIOR
GEOLOGICAL SURVEY

APPLICATION FOR PERMIT TO DRILL, DEEPEN, OR PLUG BACK

1a. TYPE OF WORK

DRILL ☒DEEPEN ☐PLUG BACK ☐

b. TYPE OF WELL

OIL
WELL ☐GAS
WELL ☒

OTHER

SINGLE
ZONE ☐MULTIPLE
ZONE ☐

2. NAME OF OPERATOR

Dugan Production Corp.

3. ADDRESS OF OPERATOR

Box 234, Farmington, NM 87401

4. LOCATION OF WELL (Report location clearly and in accordance with any State requirements.)*
At surface

L 1470' FSL - 860' FWL

At proposed prod. zone

14. DISTANCE IN MILES AND DIRECTION FROM NEAREST TOWN OR POST OFFICE*

3-1/2 miles east of El Paso's Lindrith compressor

15. DISTANCE FROM PROPOSED*

LOCATION TO NEAREST
PROPERTY OR LEASE LINE, FT.

(Also to nearest drlg. unit line, if any)

860'

16. NO. OF ACRES IN LEASE

640

19. PROPOSED DEPTH

6900'

18. DISTANCE FROM PROPOSED LOCATION*
TO NEAREST WELL, DRILLING, COMPLETED,
OR APPLIED FOR, ON THIS LEASE, FT.Approx
400'17. NO. OF ACRES ASSIGNED
TO THIS WELL

160 R-5066 #R-5002

20. ROTARY OR CABLE TOOLS

Rotary

21. ELEVATIONS (Show whether DF, RT, GR, etc.)

6549' GR

22. APPROX. DATE WORK WILL START*

-8-1-77

23. PROPOSED CASING AND CEMENTING PROGRAM

SIZE OF HOLE	SIZE OF CASING	WEIGHT PER FOOT	SETTING DEPTH	QUANTITY OF CEMENT
12-1/2"	8-5/8"	24#	180'	150 sx
7-7/8"	4-1/2"	10.5#	6900'	800 sx in two stages

Drill well with mud to test Dakota formation. If productive, will set 4-1/2" casing thru Dakota formation, selectively perforate, frac, and clean out after frac.

Will attempt dual completion in Gallup formation commingled in well bore as per NMOCC Order #R-5002.

Will use BOP furnished by rig while drilling (10" 3000 psi hydraulic).

Will use rental BOP while completing (6" 3000 psi double gate manual).

NMERB Requirement: Gas is dedicated to Northwest Pipeline Corporation.

IN ABOVE SPACE DESCRIBE PROPOSED PROGRAM: If proposal is to deepen or plug back, give data on present productive zone and proposed new productive zone. If proposal is to drill or deepen directionally, give pertinent data on subsurface locations and measured and true vertical depths. Give blowout preventer program, if any.

24.

SIGNED

Thomas A. Dugan

TITLE

Petroleum Engineer

DATE

5-16-77

(This space for Federal or State office use)

PERMIT NO.

APPROVAL DATE

APPROVED BY

TITLE

DATE

CONDITIONS OF APPROVAL, IF ANY:

*See Instructions On Reverse Side

**NEW MEXICO OIL CONSERVATION COMMISSION
WELL LOCATION AND ACREAGE DEDICATION PLAT**

Form C-102
Supersedes C-128
Effective 1-1-65

All distances must be from the outer boundaries of the Section.

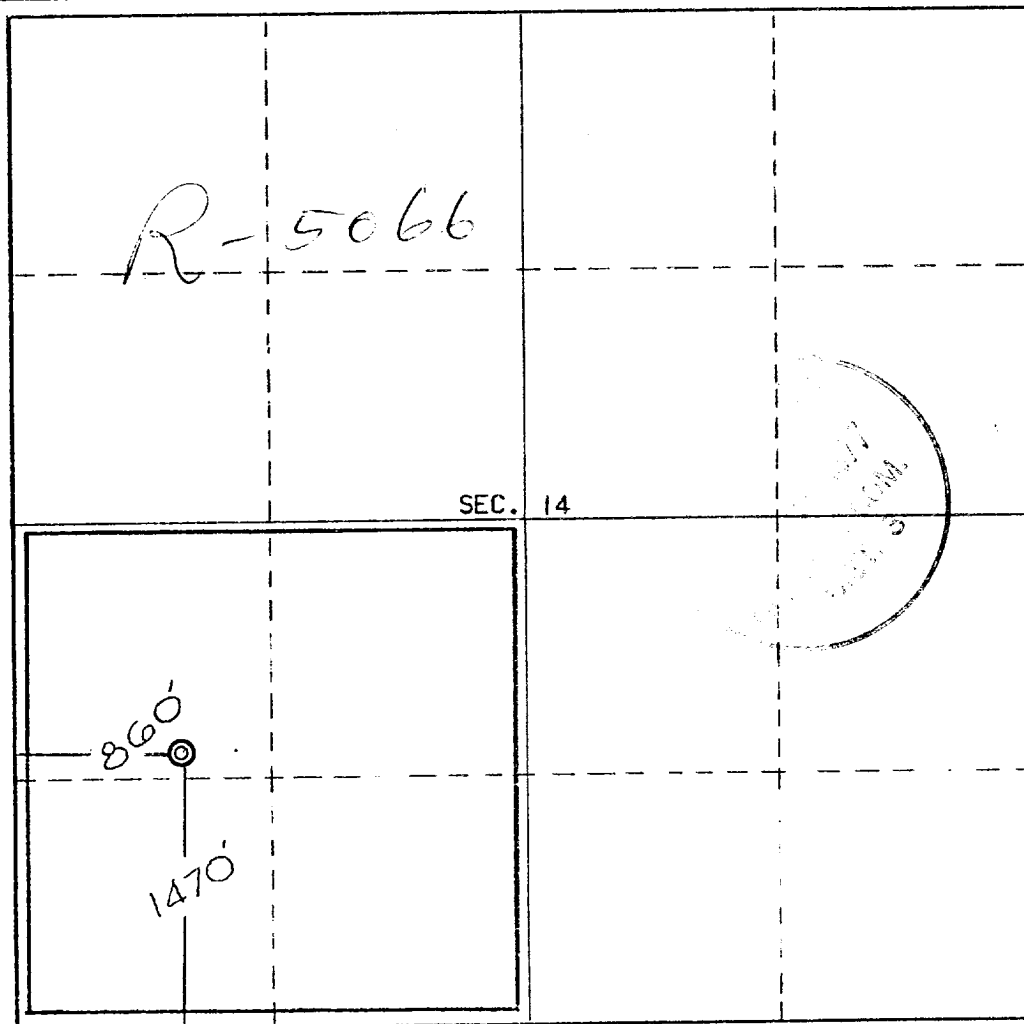
Operator Dugan Production Corporation			Lease A New Dawn		Well No. 1
Unit Letter L	Section 14	Township 24 North	Range 5 West	County Rio Arriba	
Actual Footage Location of Well: 1470 feet from the South line and 860 feet from the West line					
Ground Level Elev. 6549	Producing Formation Dakota		Pool Basin Dakota	Dedicated Acreage: 160 Acres <input checked="" type="checkbox"/>	

1. Outline the acreage dedicated to the subject well by colored pencil or hachure marks on the plat below.
2. If more than one lease is dedicated to the well, outline each and identify the ownership thereof (both as to working interest and royalty).
3. If more than one lease of different ownership is dedicated to the well, have the interests of all owners been consolidated by communitization, unitization, force-pooling, etc?

☐ Yes ☐ No If answer is "yes," type of consolidation _____

If answer is "no," list the owners and tract descriptions which have actually been consolidated. (Use reverse side of this form if necessary.) _____

No allowable will be assigned to the well until all interests have been consolidated (by communitization, unitization, forced-pooling, or otherwise) or until a non-standard unit, eliminating such interests, has been approved by the Commission.



CERTIFICATION

I hereby certify that the information contained herein is true and complete to the best of my knowledge and belief.

Name

Thomas A. Dugan

Position

Petroleum Engineer

Company

Dugan Production Corp.

Date

5-16-77

I hereby certify that the well location shown on this plat was plotted from field notes of actual surveys made by me or under my supervision, and that the same is true and correct to the best of my knowledge and belief.

Date Surveyed

December 10, 1976

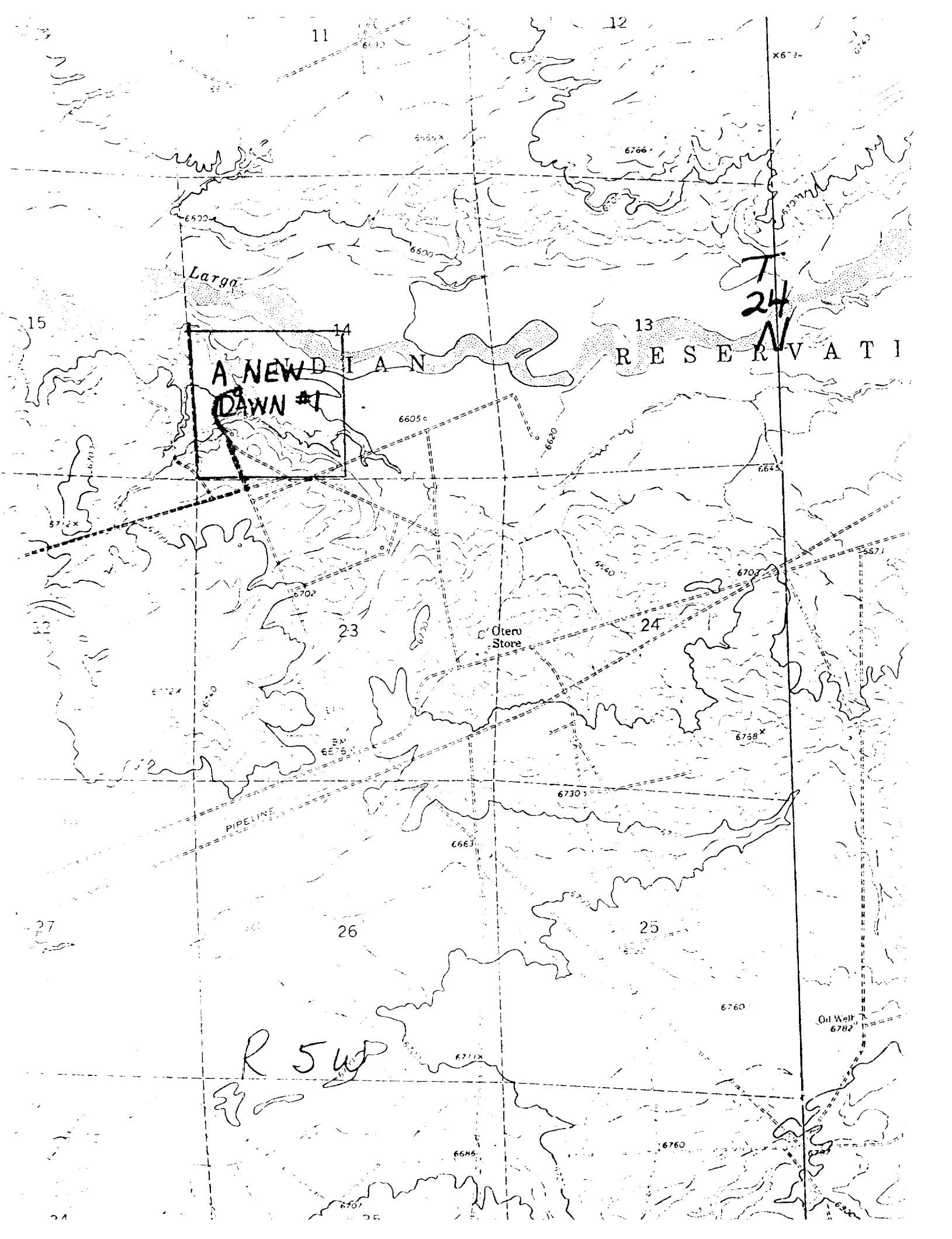
Registered Professional Engineer
and/or Land Survey

E.V. Echhawk

Certificate No. **3602**

E.V. Echhawk LS

0 350 650 950 1250 1550 1850 2150 2450 2750 3050 3350 3650 3950 4250 4550 4850 5150 5450 5750 6050 6350 6650 6950 7250 7550 7850 8150 8450 8750 9050 9350 9650 9950 0



11

12

X673-

Largo

15

14

13

A NEW DIAN

RESERVATI

DAWN #1

66050

6620

T
24
N

5722X

23

Otero
Store

24

12

5724

66050

5540

6700

5571

6758X

6730

PIPELINE

6663

26

25

27

R 54

6760

Oil Well
6782

6711X

6646

6760