

**NEW MEXICO OIL CONSERVATION COMMISSION
WELL LOCATION AND ACERAGE DEDICATION PLAT**

All distances must be from the outer boundaries of the Section

Operator CONTINENTAL OIL COMPANY		Lease AXI APACHE "N"		Well No 13
Unit Letter G	Section 2	Township 25 NORTH	Range 4 WEST	County RIO ARriba
Actual Footage Location of Well				
1850	feet from the NORTH	line and 1850	feet from the EAST	line
Ground Level Elev. 7300	Including From To Mesa Verde		Dedicated Acreage Blanco Mesa Verde 321.17 321.17	

- Outline the acreage dedicated to the subject well by colored pencil or hatchure marks on the plat below.
- If more than one lease is dedicated to the well, outline each and identify the ownership thereof (both as to working interest and royalty).
- If more than one lease of different ownership is dedicated to the well, have the interests of all owners been consolidated by communitization, unitization, force-pooling, etc?
☐ Yes ☐ No If answer is "yes," type of consolidation _____

If answer is "no," list the owners and tract descriptions which have actually consolidated. (Use reverse side of this form if necessary.) _____

No allowable will be assigned to the well until all interests have been consolidated (by communitization, unitization, forced-pooling, or otherwise) or until a non standard unit, eliminating such interests, has been approved by the Commission.

CERTIFICATION

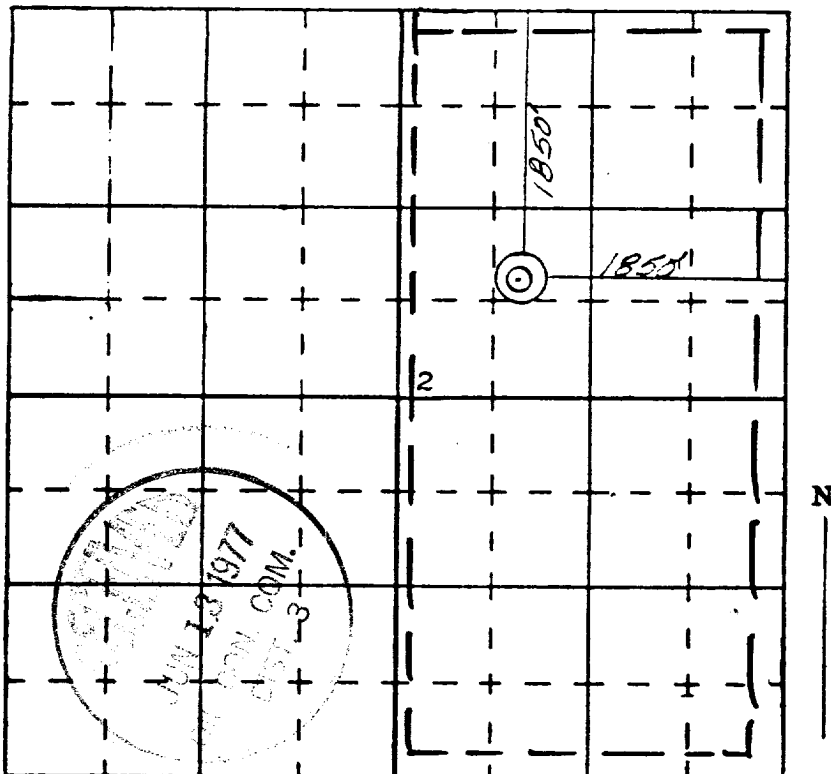
I hereby certify that the information contained herein is true and complete to the best of my knowledge and belief.

Name Wm. A. Butterfield
 Position ADMIN. SUPERV.
 Company Continental Oil Co.
 Date 3-16-77

I hereby certify that the well location shown on this plat was plotted from field notes of actual surveys made by me or under my supervision, and that the same is true and correct to the best of my knowledge and belief.

17 February 1977

Date Surveyed _____
James P. Leese
 Registered Professional Engineer
 and/or Land Surveyor **James P. Leese**



1463
 Certificate No.