

UNITED STATES
DEPARTMENT OF THE INTERIOR
GEOLOGICAL SURVEY

30-039-21446

APPLICATION FOR PERMIT TO DRILL, DEEPEN, OR PLUG BACK

1a. TYPE OF WORK
DRILL DEEPEN PLUG BACK

b. TYPE OF WELL
OIL WELL GAS WELL OTHER SINGLE ZONE MULTIPLE ZONE

2. NAME OF OPERATOR
Cotton Petroleum Corporation

3. ADDRESS OF OPERATOR
1285 1st of Denver Plaza 633 17th Street
Denver, Colorado 80202

4. LOCATION OF WELL (Report location clearly and in accordance with any State requirements.)*
At surface 790' FSL, 790' FWL ✓
At proposed prod. zone same

14. DISTANCE IN MILES AND DIRECTION FROM NEAREST TOWN OR POST OFFICE*

15. DISTANCE FROM PROPOSED* LOCATION TO NEAREST PROPERTY OR LEASE LINE, FT. (Also to nearest drlg. unit line, if any) 790'

16. NO. OF ACRES IN LEASE

17. NO. OF ACRES ASSIGNED TO THIS WELL 160 ✓

18. DISTANCE FROM PROPOSED LOCATION* TO NEAREST WELL, DRILLING, COMPLETED, OR APPLIED FOR, ON THIS LEASE, FT.

19. PROPOSED DEPTH 2950'

20. ROTARY OR CABLE TOOLS Rotary

21. ELEVATIONS (Show whether DF, RT, GR, etc.)
6771' GR, 6781' DF, 6782' KB

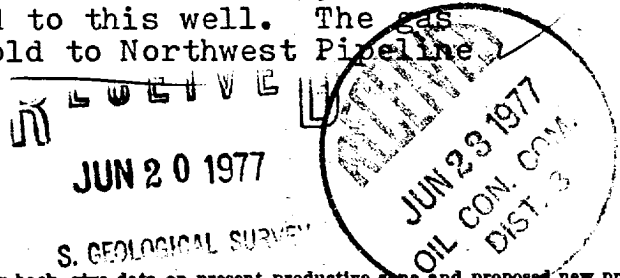
22. APPROX. DATE WORK WILL START*
July 4, 1977

23. PROPOSED CASING AND CEMENTING PROGRAM

| SIZE OF HOLE | SIZE OF CASING | WEIGHT PER FOOT | SETTING DEPTH | QUANTITY OF CEMENT |
|--------------|----------------|-----------------|---------------|--------------------|
| 12 3/4 | 8-5/8" | 24.0 | 100' | 150 sx. |
| 7-7/8 | 4 1/2" | 10.50 | 2950' | Tobe determined |

It is proposed to drill this well with rotary tools using drilling mud for circulation through the Pictured Cliffs formation. All possible production intervals in the Pictured Cliffs will be completed. Estimated Formation Tops
Ojo Alamo - 2300' Fruitland - 2710'
Kirtland - 2490' Pictured Cliffs - 2835'

The SW/4 of Section 3 is dedicated to this well. The gas produced from this well will be sold to Northwest Pipeline Company.



IN ABOVE SPACE DESCRIBE PROPOSED PROGRAM: If proposal is to deepen or plug back, give data on present productive zone and proposed new productive zone. If proposal is to drill or deepen directionally, give pertinent data on subsurface locations and measured and true vertical depths. Give blowout preventer program, if any.

24. For: Cotton Petroleum Corporation President, Walsh
SIGNED: *[Signature]* TITLE: Engr. & Prod. Corp. DATE: June 17, 1977
Ewell N. Walsh, P.E.

(This space for Federal or State office use)

PERMIT NO. _____ APPROVAL DATE _____

APPROVED BY _____ TITLE _____ DATE _____

CONDITIONS OF APPROVAL, IF ANY:

NEW MEXICO OIL CONSERVATION COMMISSION
WELL LOCATION AND ACREAGE DEDICATION PLAT

Form C-102
Superseded C-128
Effective 1-1-65

All distances must be from the outer boundaries of the Section.

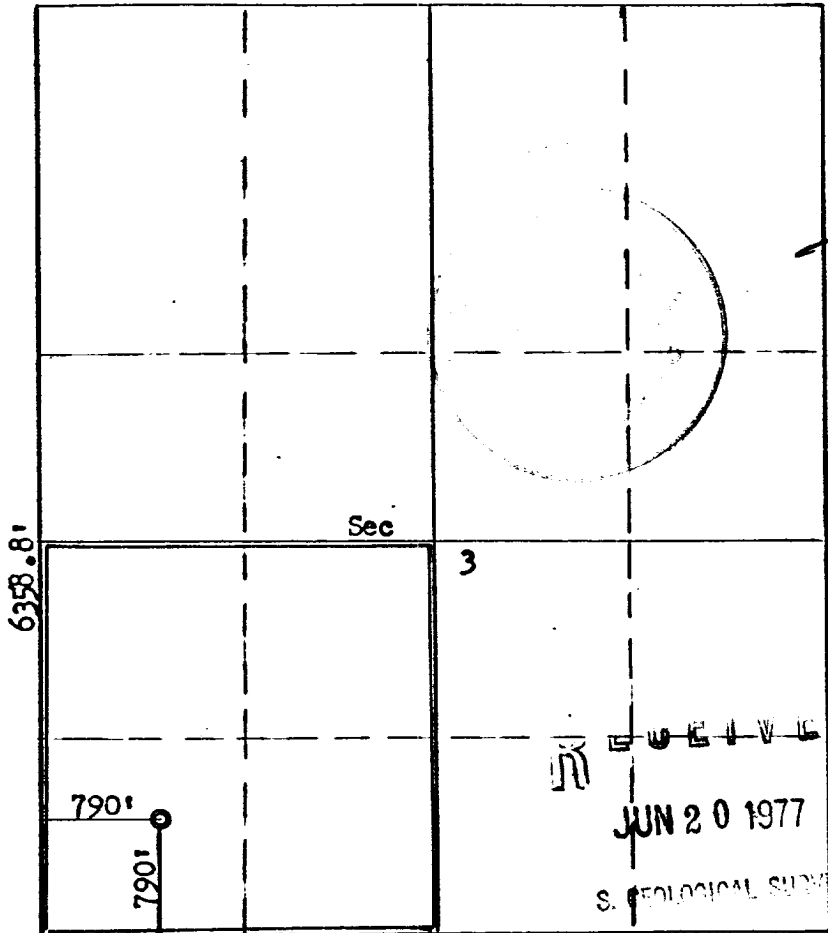
| | | | | |
|--|---|---|---------------------------------------|-----------------------------|
| Operator Cotton Petroleum Corporation | | Lease Apache | | Well No. 19 |
| Unit Letter M | Section 3 | Township 24N | Range 4W | County Rio Arriba |
| Actual Footage Location of Wells 790 feet from the South line and 790 feet from the West line | | | | |
| Ground Level Elev: 6771 | Producing Formation Pictured Cliffs | Pool South Blanco Pictured Cliffs | Dedicated Acreage 160 Acres | |

1. Outline the acreage dedicated to the subject well by colored pencil or hachure marks on the plat below.
2. If more than one lease is dedicated to the well, outline each and identify the ownership thereof (both as to working interest and royalty).
3. If more than one lease of different ownership is dedicated to the well, have the interests of all owners been consolidated by communitization, unitization, force-pooling, etc?

Yes No If answer is "yes," type of consolidation _____

If answer is "no," list the owners and tract descriptions which have actually been consolidated. (Use reverse side of this form if necessary.) _____

No allowable will be assigned to the well until all interests have been consolidated (by communitization, unitization, forced-pooling, or otherwise) or until a non-standard unit, eliminating such interests, has been approved by the Commission.



5286.9'
Scale: 4 Inches = 1 Mile

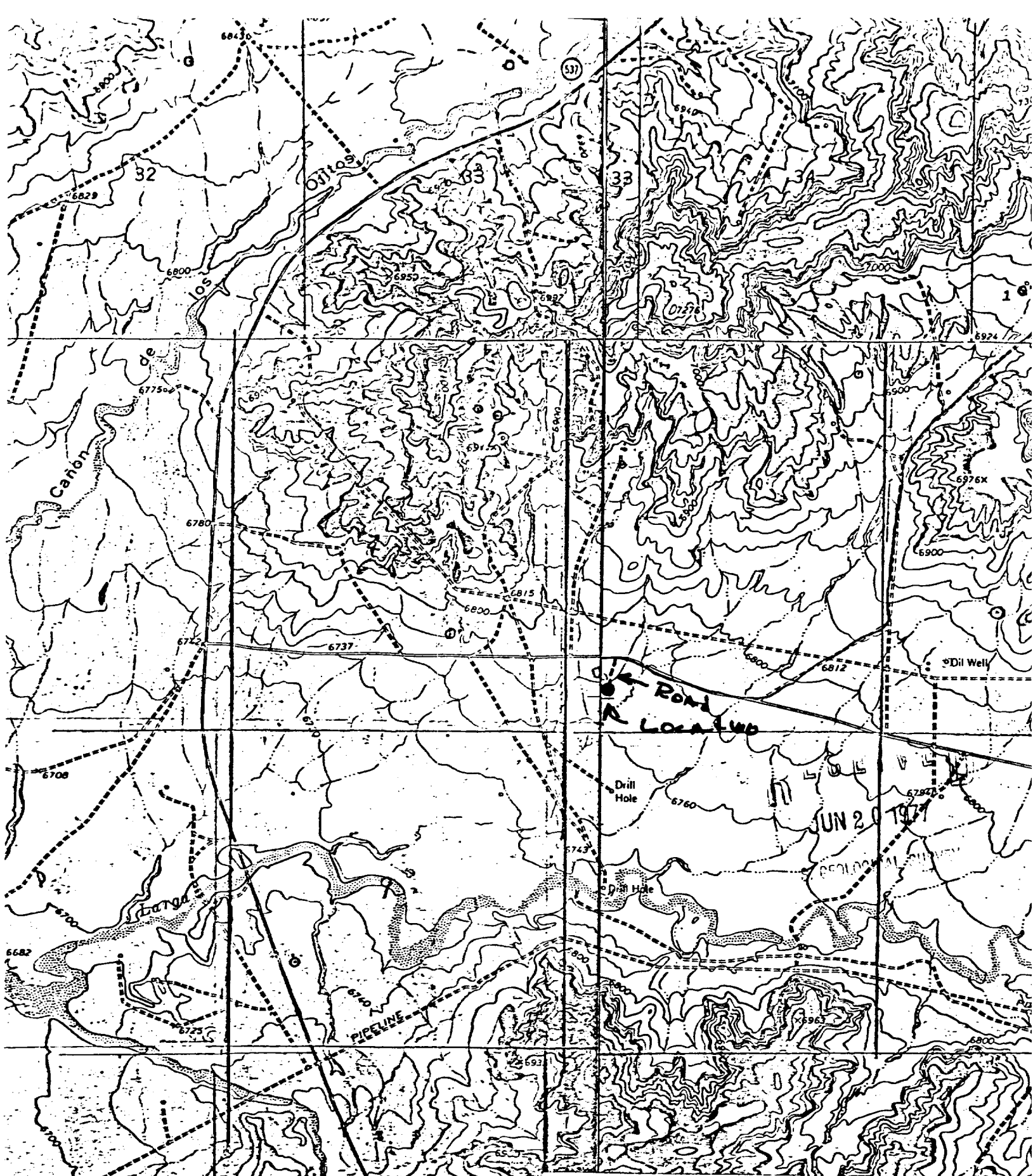
CERTIFICATION

I hereby certify that the information contained herein is true and complete to the best of my knowledge and belief.
For: Cotton Petr. Corp.

Name: *Ewell N. Walsh*
Position: **Ewell N. Walsh, P.E.**
Company: **Walsh Engr. & Production Corp.**
Date: **June 17, 1977**

I hereby certify that the well location shown on this plat was plotted from field notes of actual surveys made by me or under my supervision, and that the same is true and correct to the best of my knowledge and belief.

Date Surveyed: **June 13, 1977**
Registered Professional Engineer and Land Surveyor: *Fred B. Kerr Jr.*
Fred B. Kerr Jr.
Certificate No.: **3950**



Vicinity Map for
COTTON PETROLEUM CORPORATION
#19 Apache
790' RSL 790' FWL Sec 3-24N-4W
Rio Arriba County, New Mexico