

UNITED STATES
DEPARTMENT OF THE INTERIOR
GEOLOGICAL SURVEY

30-039-21448

APPLICATION FOR PERMIT TO DRILL, DEEPEN, OR PLUG BACK

1a. TYPE OF WORK
DRILL ☒ DEEPEN ☐ PLUG BACK ☐

b. TYPE OF WELL
OIL WELL ☐ GAS WELL ☒ OTHER ☐ SINGLE ZONE ☒ MULTIPLE ZONE ☐

2. NAME OF OPERATOR
Cotton Petroleum Corporation

3. ADDRESS OF OPERATOR
633 17th Street
1285 1st of Denver Plaza, Denver, Colorado 80202

4. LOCATION OF WELL (Report location clearly and in accordance with any State requirements.)*
At surface

1600' FSL, 1850' FEL
At proposed prod. zone
same

14. DISTANCE IN MILES AND DIRECTION FROM NEAREST TOWN OR POST OFFICE*

15. DISTANCE FROM PROPOSED*
LOCATION TO NEAREST
PROPERTY OR LEASE LINE, FT.
(Also to nearest drig. unit line, if any) 1600'

18. DISTANCE FROM PROPOSED LOCATION*
TO NEAREST WELL, DRILLING, COMPLETED,
OR APPLIED FOR, ON THIS LEASE, FT.

21. ELEVATIONS (Show whether DF, RT, GR, etc.)
6779'GR, 6789'DF, 6790'KB

23. PROPOSED CASING AND CEMENTING PROGRAM

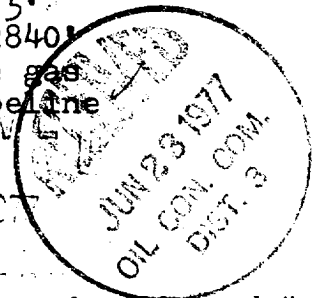
SIZE OF HOLE	SIZE OF CASING	WEIGHT PER FOOT	SETTING DEPTH	QUANTITY OF CEMENT
12 1/4	8-5/8"	24.0	100'	150 sxs.
7-7/8	4 1/2"	10.50	2950'	To be determined

It is proposed to drill this well with rotary tools, using drilling mud for circulation through the Pictured Cliffs formation. All possible production intervals in the Pictured Cliffs will be completed. Estimated Formation Tops:

Ojo Alamo - 2300' Fruitland - 2715'
Kirtland - 2500' Pictured Cliffs - 2840'

The SE/4 of section 4 is dedicated to this well. The gas produced from this well will be sold to Northwest Pipeline Company.

JUN 20 1977



IN ABOVE SPACE DESCRIBE PROPOSED PROGRAM: If proposal is to deepen or plug back, give data on present productive zone and proposed new productive zone. If proposal is to drill or deepen directionally, give pertinent data on subsurface locations and measured and true vertical depths. Give blowout preventer program, if any.

24. For: Cotton Pet. Corp. President, Walsh Engr. & Production Corp. DATE June 17, 1977
SIGNED [Signature] TITLE
(This space for Federal or State office use)

PERMIT NO. APPROVAL DATE

APPROVED BY TITLE DATE
CONDITIONS OF APPROVAL, IF ANY:

**NEW MEXICO OIL CONSERVATION COMMISSION
WELL LOCATION AND ACREAGE DEDICATION PLAT**

Form C-102
Supersedes C-128
Effective 1-4-65

All distances must be from the outer boundaries of the Section.

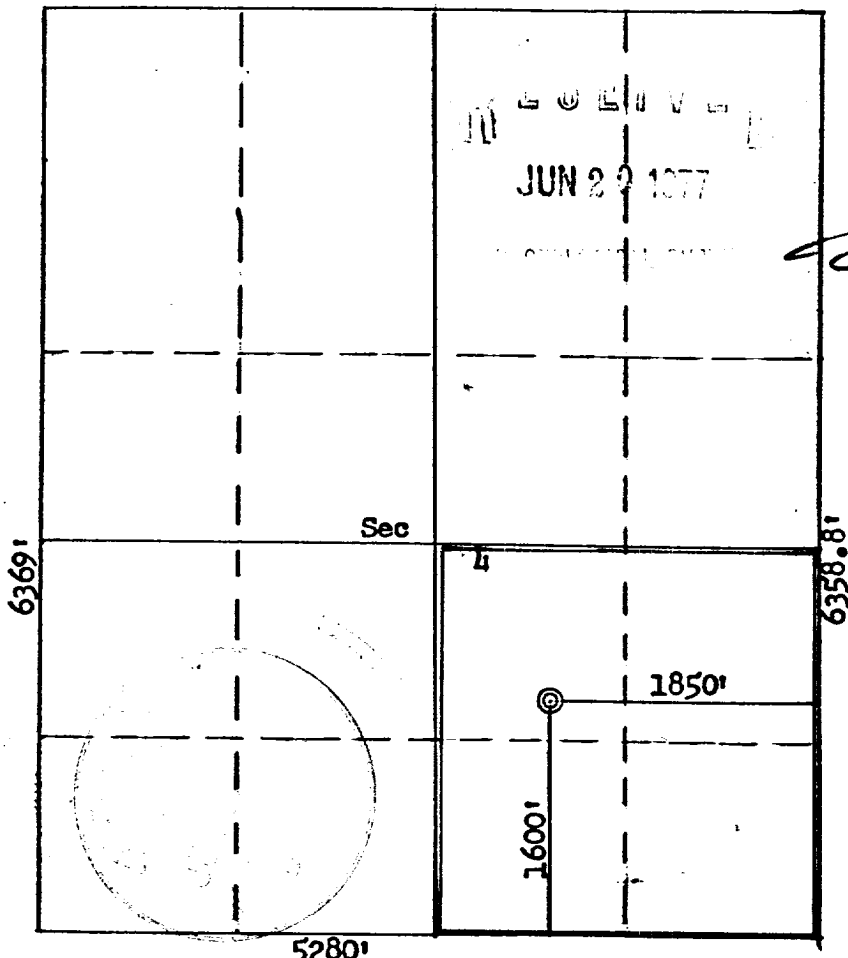
Operator Cotton Petroleum Corporation			Lease Apache		Well No. 21
Unit Letter J	Section 4	Township 24N	Range 4W	County Rio Arriba	
Actual Footage Location of Well					
1600		feet from the South	line and 1850	feet from the East	line
Ground Level Elev: 6779	Producing Formation Pictured Cliffs		Pool South Blanco Pictured Cliffs		Dedicated Acreage 160 ✓ Acres

1. Outline the acreage dedicated to the subject well by colored pencil or hachure marks on the plat below.
2. If more than one lease is dedicated to the well, outline each and identify the ownership thereof (both as to working interest and royalty).
3. If more than one lease of different ownership is dedicated to the well, have the interests of all owners been consolidated by communitization, unitization, force-pooling, etc?

☐ Yes ☐ No If answer is "yes," type of consolidation _____

If answer is "no," list the owners and tract descriptions which have actually been consolidated. (Use reverse side of this form if necessary.) _____

No allowable will be assigned to the well until all interests have been consolidated (by communitization, unitization, forced-pooling, or otherwise) or until a non-standard unit, eliminating such interests, has been approved by the Commission.



Scale: 1/4 in. = 1 mile

CERTIFICATION

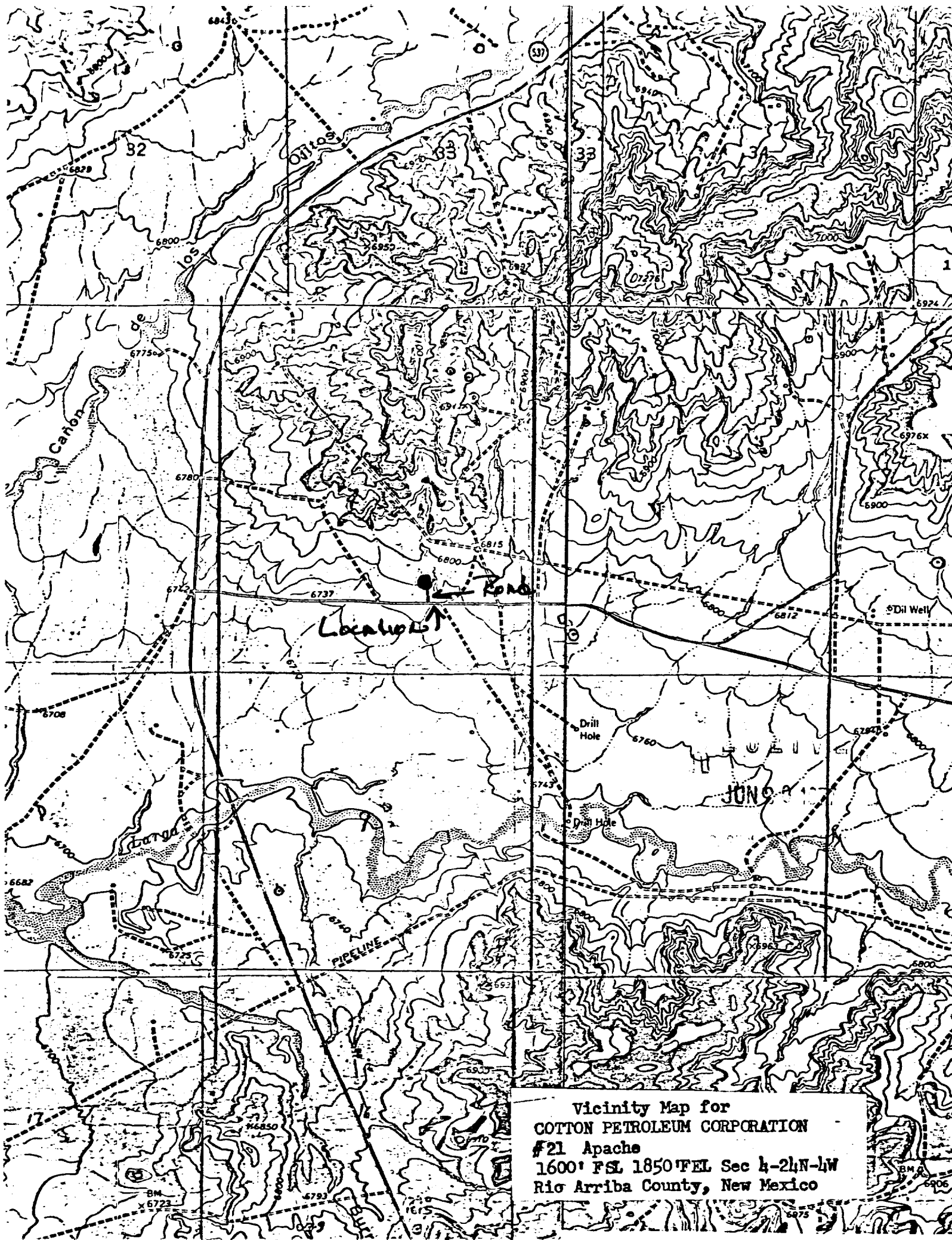
I hereby certify that the information contained herein is true and complete to the best of my knowledge and belief.
For: Cotton Petr. Corp.

Name: *Ewell N. Walsh*
Position: **Ewell N. Walsh, P.E.
President**
Company: **Walsh Engineering
& Production Corp.**

Date: **June 17, 1977**

I hereby certify that the well location shown on this plat was plotted from field notes of actual surveys made by me or under my supervision, and that the same is true and correct to the best of my knowledge and belief.

Date Surveyed: **June 13, 1977**
Registered Professional Engineer and Land Surveyor:
Fred B. Kerr Jr.
Fred B. Kerr Jr.
Certificate No. **3950**



Vicinity Map for
COTTON PETROLEUM CORPORATION
#21 Apache
1600' FSL 1850' FEL Sec 4-24N-4W
Rio Arriba County, New Mexico