

UNITED STATES
DEPARTMENT OF THE INTERIOR
GEOLOGICAL SURVEY

APPLICATION FOR PERMIT TO DRILL, DEEPEN, OR PLUG BACK

1a. TYPE OF WORK
DRILL ☒ DEEPEN ☐ PLUG BACK ☐

b. TYPE OF WELL
OIL WELL ☐ GAS WELL ☒ OTHER ☐ SINGLE ZONE ☒ MULTIPLE ZONE ☐

2. NAME OF OPERATOR
Cotton Petroleum Corporation

3. ADDRESS OF OPERATOR 1285 1st of Denver Plaza,
633 17th Street, Denver, Colorado 80202

4. LOCATION OF WELL (Report location clearly and in accordance with any State requirements.)*
At surface
790' FNL, 790' FEL
At proposed prod. zone

14. DISTANCE IN MILES AND DIRECTION FROM NEAREST TOWN OR POST OFFICE*

15. DISTANCE FROM PROPOSED*
LOCATION TO NEAREST
PROPERTY OR LEASE LINE, FT.
(Also to nearest drlg. unit line, if any) 790'

18. DISTANCE FROM PROPOSED LOCATION*
TO NEAREST WELL, DRILLING, COMPLETED,
OR APPLIED FOR, ON THIS LEASE, FT. 2000'

21. ELEVATIONS (Show whether DF, RT, GR, etc.)
6816' GR

23. PROPOSED CASING AND CEMENTING PROGRAM

SIZE OF HOLE	SIZE OF CASING	WEIGHT PER FOOT	SETTING DEPTH	QUANTITY OF CEMENT
12-1/4	8-5/8"	24.0	100	150 sxs
7-7/8	4-1/2"	10.50	3190	To be determined.

It is proposed to drill this well with rotary tools using drilling mud for circulation through the Pictured Cliffs Formation. All possible production intervals in the Pictured Cliffs will be completed. Estimated Formation Tops:

Ojo Alamo - 2500' Fruitland - 2920'
Kirtland - 2700' Pictured Cliffs - 3040'

The NE/4 of Section 14 is dedicated to this well. The gas produced from this well will be sold to Northwest Pipeline Co.

IN ABOVE SPACE DESCRIBE PROPOSED PROGRAM: If proposal is to deepen or plug back, give data on present productive zone and proposed new productive zone. If proposal is to drill or deepen directionally, give pertinent data on subsurface locations and measured and true vertical depths. Give blowout preventer program, if any.

24. For: Cotton Petroleum Corporation President, Walsh Engineering
& Production Corp. TITLE
Ewell N. Walsh, P. E. DATE July 25, 1977

(This space for Federal or State office use)

PERMIT NO. APPROVAL DATE

APPROVED BY TITLE DATE

CONDITIONS OF APPROVAL, IF ANY:

Okal

st

*See Instructions On Reverse Side

30-039-21492

5. LEASE DESIGNATION AND SERIAL NO.

Contract No. 129

6. IF INDIAN, ALLOTTEE OR TRIBE NAME
Jicarilla Apache

7. UNIT AGREEMENT NAME

8. FARM OR LEASE NAME

Apache

9. WELL NO.

24

10. FIELD AND POOL, OR WILDCAT

So. Blanco P. C.

11. SEC., T., R., M., OR BLK.
AND SURVEY OR AREA

Sec. 14-T24N-R4W
N.M.P.M.

12. COUNTY OR PARISH 13. STATE

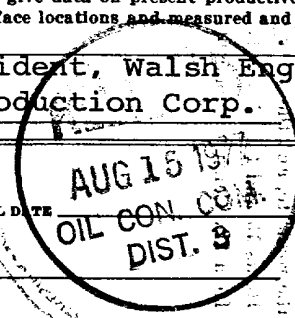
Rio Arriba New Mexico

17. NO. OF ACRES ASSIGNED
TO THIS WELL 160 Acres

20. ROTARY OR CABLE TOOLS
Rotary

22. APPROX. DATE WORK WILL START*
Sept. 15, 1977

JUL 28 1977



**NEW MEXICO OIL CONSERVATION COMMISSION
WELL LOCATION AND ACREAGE DEDICATION PLAT**

Form C-102
Superseded C-128
Effective 1-1-65

All distances must be from the outer boundaries of the Section.

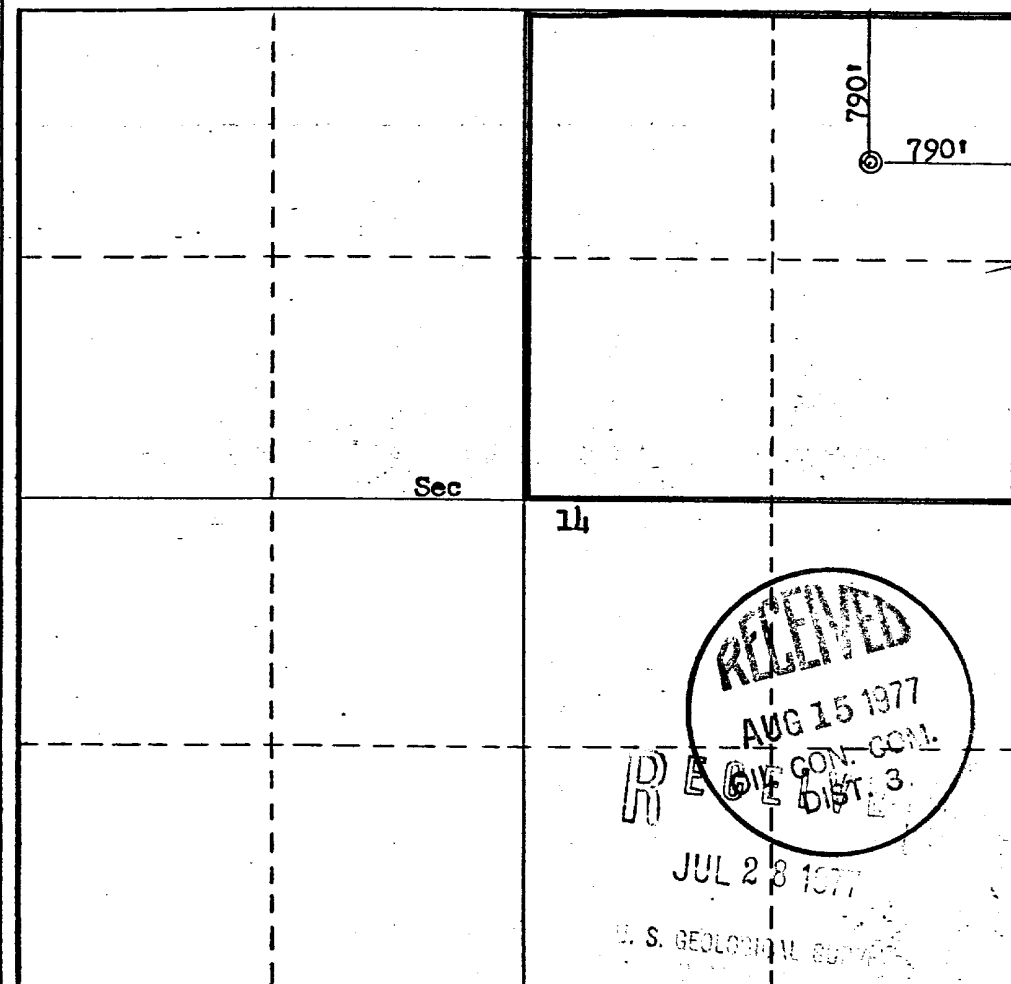
Operator Cotton Petroleum Corporation			Lease Apache		Well No. 24
Unit Letter A	Section 14	Township 24N	Range 4W	County Rio Arriba	
Actual Footage Location of Well: 790 feet from the North line and 790 feet from the East line					
Ground Level Elev. 6816	Producing Formation Pictured Cliffs	Pool South Blanco Pictured Cliffs	Dedicated Acreage: 160 Acres		

1. Outline the acreage dedicated to the subject well by colored pencil or hatchure marks on the plat below.
2. If more than one lease is dedicated to the well, outline each and identify the ownership thereof (both as to working interest and royalty).
3. If more than one lease of different ownership is dedicated to the well, have the interests of all owners been consolidated by communitization, unitization, force-pooling, etc?

☐ Yes ☐ No If answer is "yes," type of consolidation _____

If answer is "no," list the owners and tract descriptions which have actually been consolidated. (Use reverse side of this form if necessary.) _____

No allowable will be assigned to the well until all interests have been consolidated (by communitization, unitization, forced-pooling, or otherwise) or until a non-standard unit, eliminating such interests, has been approved by the Commission.



CERTIFICATION

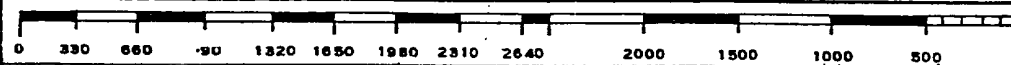
I hereby certify that the information contained herein is true and complete to the best of my knowledge and belief.

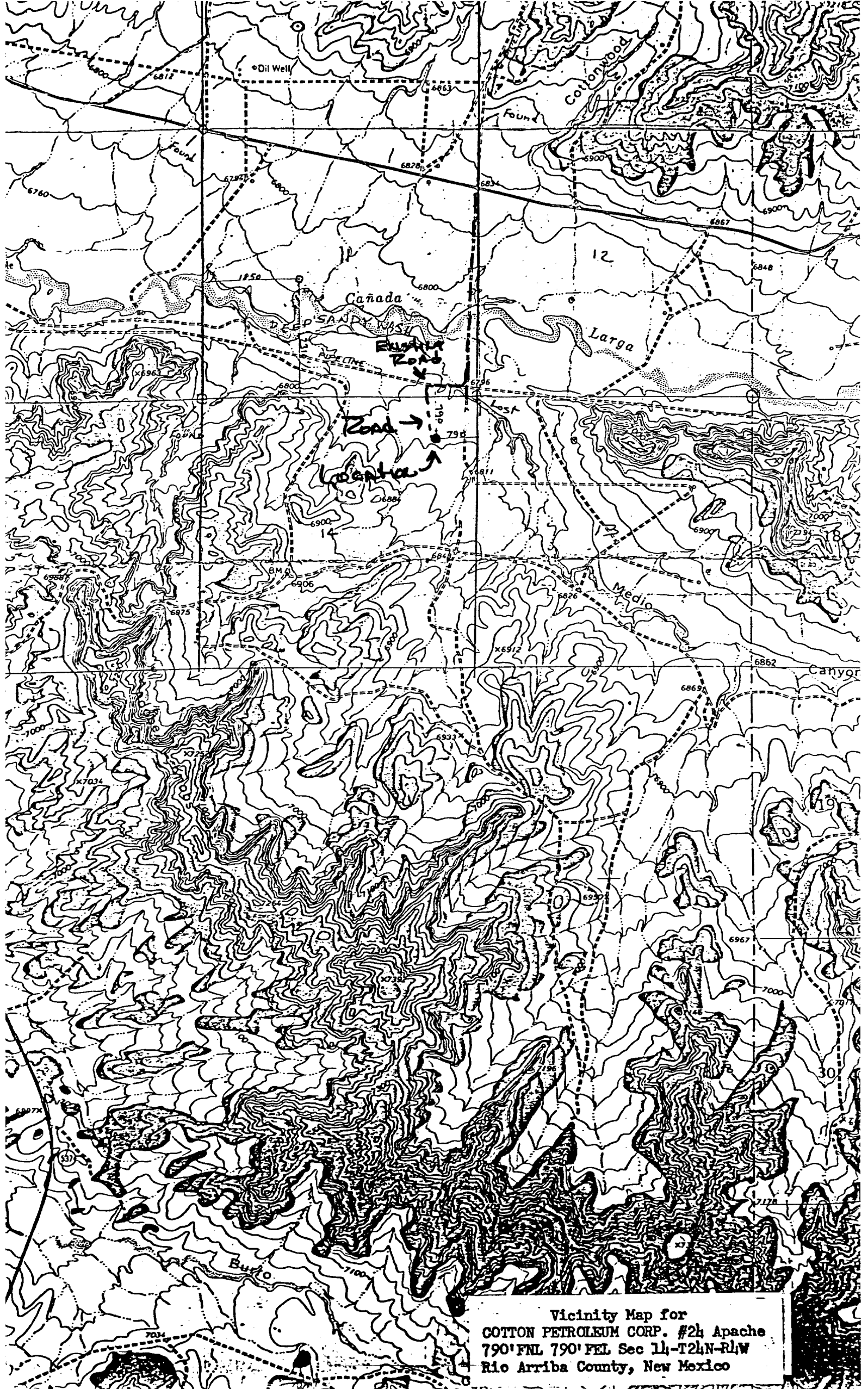
For: Cotton Petroleum Corp

Name: Ewell N. Walsh
 Position: Ewell N. Walsh, P.E. President, Walsh
 Company: Engineering & Production Corp.
 Date: July 25, 1977

I hereby certify that the well location shown on this plat was plotted from field notes of actual surveys made by me or under my supervision, and that the same is true and correct to the best of my knowledge and belief.

Date Surveyed: July 12, 1977
 Registered Professional Engineer and/or Land Surveyor: Fred B. Keph Jr.
 Certificate No.: 3950





Vicinity Map for
COTTON PETROLEUM CORP. #2h Apache
790' FNL 790' FEL Sec 14-T24N-R4W
Rio Arriba County, New Mexico

DEVELOPMENT PLAN
COTTON PETROLEUM CORPORATION
APACHE NO. 24

790'FNL, 790'FEL, Section 14-T24N-R4W
Rio Arriba County, N.M.

1. Existing roads shown on attached plat.
2. Planned access from existing road is approximately 500' to new location.
3. Location - See above.
4. One additional well is planned on this lease at this time.
5. Production equipment or storage facilities proposed for the well will be installed on location.
6. Water will be obtained from Largo Wash, SW/4 Sec. 9-T24N-R4W.
7. Waste materials will be buried on location or in reserve pit.
8. No permanent camp is planned. A trailer house will be used on location during drilling process.
9. No airstrip proposed.
10. See attached plat for layout.
11. Pits will be filled, location cleaned up, and area not in use for producing well will be reseeded.

RECEIVED

JUL 28 1977

U. S. GEOLOGICAL SURVEY

DEVELOPMENT PLAN

Page 2 of 2

12. Lessee's or operator's representative.

Ewell N. Walsh: 325-8203; Radio Dispatch 325-1873, Car 620.
Address: P. O. Box 254, Farmington, New Mexico 87401

13. CERTIFICATION:

I hereby certify that I, or persons under my direct supervision, have inspected the proposed drillsite and access route; that I am familiar with the conditions which presently exist; that the statements made in this plan are, to the best of my knowledge, true and correct; and, that the work associated with the operations proposed herein will be performed by: COTTON

PETROLEUM CORPORATION

and its contractors and subcontractors in conformity with this plan and the terms and conditions under which it is approved.



Ewell N. Walsh, P.E., President,
Walsh Engineering & Production
Corporation

RECEIVED

JUL 28 1977

U. S. GEOLOGICAL SURVEY

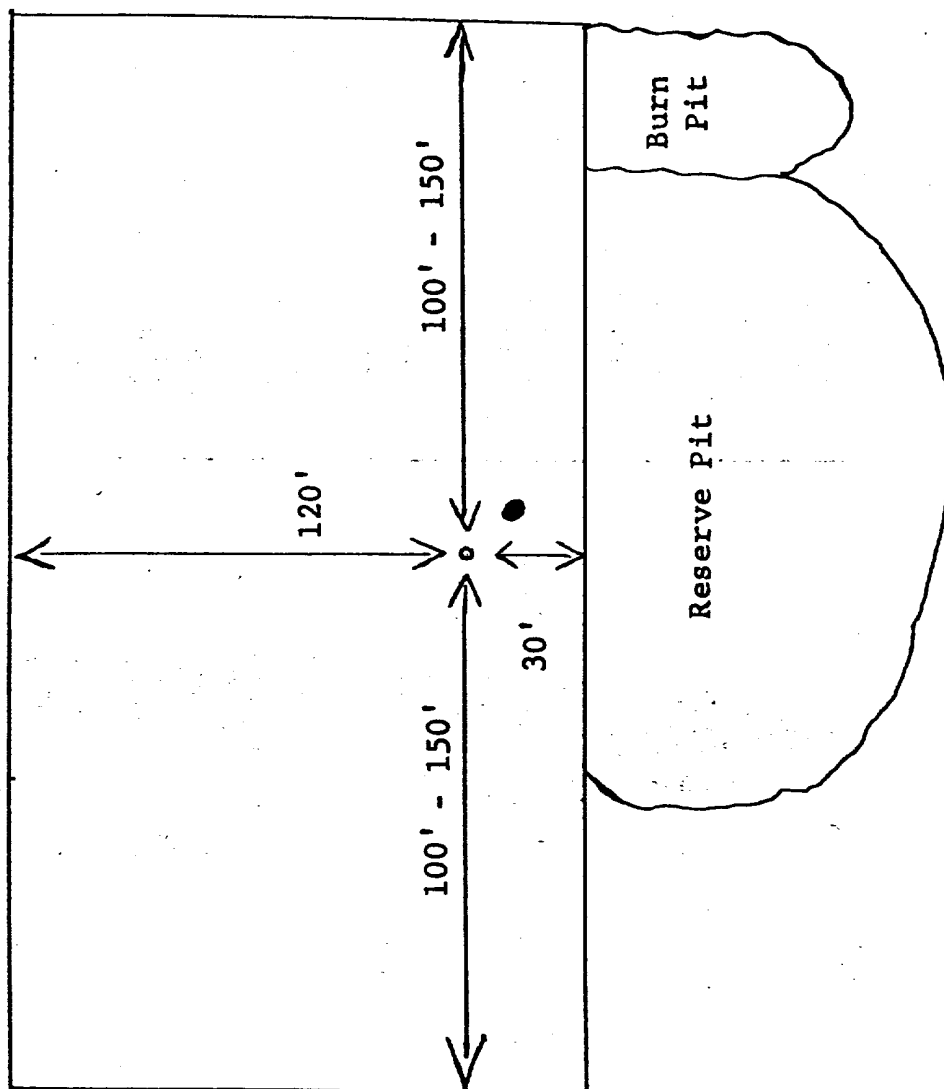
COTTON PETROLEUM CORPORATION

APACHE NO. 24

790' FNL, 790' FEL, Sec. 14-T24N-R4W

Rio Arriba County, N. M.

DEVELOPMENT PLAN



RECEIVED RECEIVED

JUL 28 1977

JUL 28 1977

COTTON PETROLEUM CORPORATION
APACHE NO. 24
NE/4 Sec. 14-T24N-R4W
Rio Arriba County, N. M.

Seven Point Well Control Program

1. Surface Casing.
See Application for Permit to Drill.
2. Spools and Flanges
 - A. Surface Casing - 10", Series 600, 2000 psi W.P.
 - B. Production, 10", Series 600, 2000 psi W.P.
 - C. Tubing Head - Series 600, 2000 psi. W.P.
3. Intermediate Casing.
None
4. Blowout Preventers
Production Hole - 10", 2000 psi
Fill, kill and choke manifold - 5000 psi. W.P.
5. Additional Equipment (If necessary)
 - A. Kelly Cock
 - B. Bit Float
 - C. Degasser
 - D. Pit Level Indicator
 - E. Sub with Valve for drill pipe.
6. Anticipated Bottom Hole Pressure.
1000 psi. Current mud program is for 9.2 lb./gal mud with hydrostatic head of 1500 psi at 3200 feet. Mud weight will be increased if necessary for higher pressures.
7. Drilling Fluid.
Low solids, Low water loss.

RECEIVED

JUL 28 1977

S. POLYMER