

UNITED STATES  
DEPARTMENT OF THE INTERIOR  
GEOLOGICAL SURVEY

## APPLICATION FOR PERMIT TO DRILL, DEEPEN, OR PLUG BACK

1a. TYPE OF WORK

DRILL ☒DEEPEN ☐PLUG BACK ☐

b. TYPE OF WELL

OIL  
WELL ☒GAS  
WELL ☐

OTHER

Wildcat

SINGLE  
ZONE ☐MULTIPLE  
ZONE ☐

2. NAME OF OPERATOR

TransOcean Oil, Inc.

3. ADDRESS OF OPERATOR

First City East Bldg., 1111 Fannin, Houston, Tx. 77002

4. LOCATION OF WELL (Report location clearly and in accordance with any State requirements.\*)

At surface 790' FNL &amp; 790' FEL of Section 31, T24N-R3W

At proposed prod. zone

14. DISTANCE IN MILES AND DIRECTION FROM NEAREST TOWN OR POST OFFICE\*

11 miles SW of Lindrith, New Mexico

15. DISTANCE FROM PROPOSED\*  
LOCATION TO NEAREST  
PROPERTY OR LEASE LINE, FT.  
(Also to nearest drlg. unit line, if any) 790' FNL & 790' FEL  
Sec 31, T24N-  
R3W16. NO. OF ACRES IN LEASE  
38518. DISTANCE FROM PROPOSED LOCATION\*  
TO NEAREST WELL, DRILLING, COMPLETED,  
OR APPLIED FOR, ON THIS LEASE, FT.

N/A

19. PROPOSED DEPTH  
7900'17. NO. OF ACRES ASSIGNED  
TO THIS WELL  
160

20. ROTARY OR CABLE TOOLS

Rotary

22. APPROX. DATE WORK WILL START\*

Oct. 15, 1977

23.

## PROPOSED CASING AND CEMENTING PROGRAM

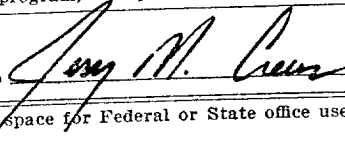
SIZE OF HOLE	SIZE OF CASING	WEIGHT PER FOOT	SETTING DEPTH	QUANTITY OF CEMENT
12 1/4"	9 5/8"	36#	400'	200 sx CL "H" + additives
7 7/8"	5 1/2"	15.5#	3000-7900'	To be determined after
7 7/8"	5 1/2"	17#	0-3000'	evaluation of caliper log.

Please review operation plan for BOP equipment and circulating medium

IN ABOVE SPACE DESCRIBE PROPOSED PROGRAM: If proposal is to deepen or plug back, give data on present productive zone and proposed new productive zone. If proposal is to drill or deepen directionally, give pertinent data on subsurface locations and measured and true vertical depths. Give blowout preventer program, if any.

24.

SIGNED



TITLE Drilling Engineer

DATE

(This space for Federal or State office use)

PERMIT NO.

APPROVAL DATE

APPROVED BY

TITLE

CONDITIONS OF APPROVAL, IF ANY:



\*See Instructions On Reverse Side

30-039-21504  
5. LEASE DESIGNATION AND SERIAL NO.

NM 28714

6. IF INDIAN, ALLOTTEE OR TRIBE NAME

7. UNIT AGREEMENT NAME

N/A

8. FARM OR LEASE NAME

Federal (28714)

9. WELL NO.

1

10. FIELD AND POOL OR WILDCAT

Chas on Dakota cvt

11. SEC., T., R., M., OR BLK.  
AND SURVEY OR AREA

Sec. 31, T24N-R3W

12. COUNTY OR PARISH

13. STATE

Rio Arriba

New Mexico

**NEW MEXICO OIL CONSERVATION COMMISSION  
WELL LOCATION AND ACREAGE DEDICATION PLAT**

Form C-102  
Supersedes C-128  
Effective 1-1-65

All distances must be from the outer boundaries of the Section.

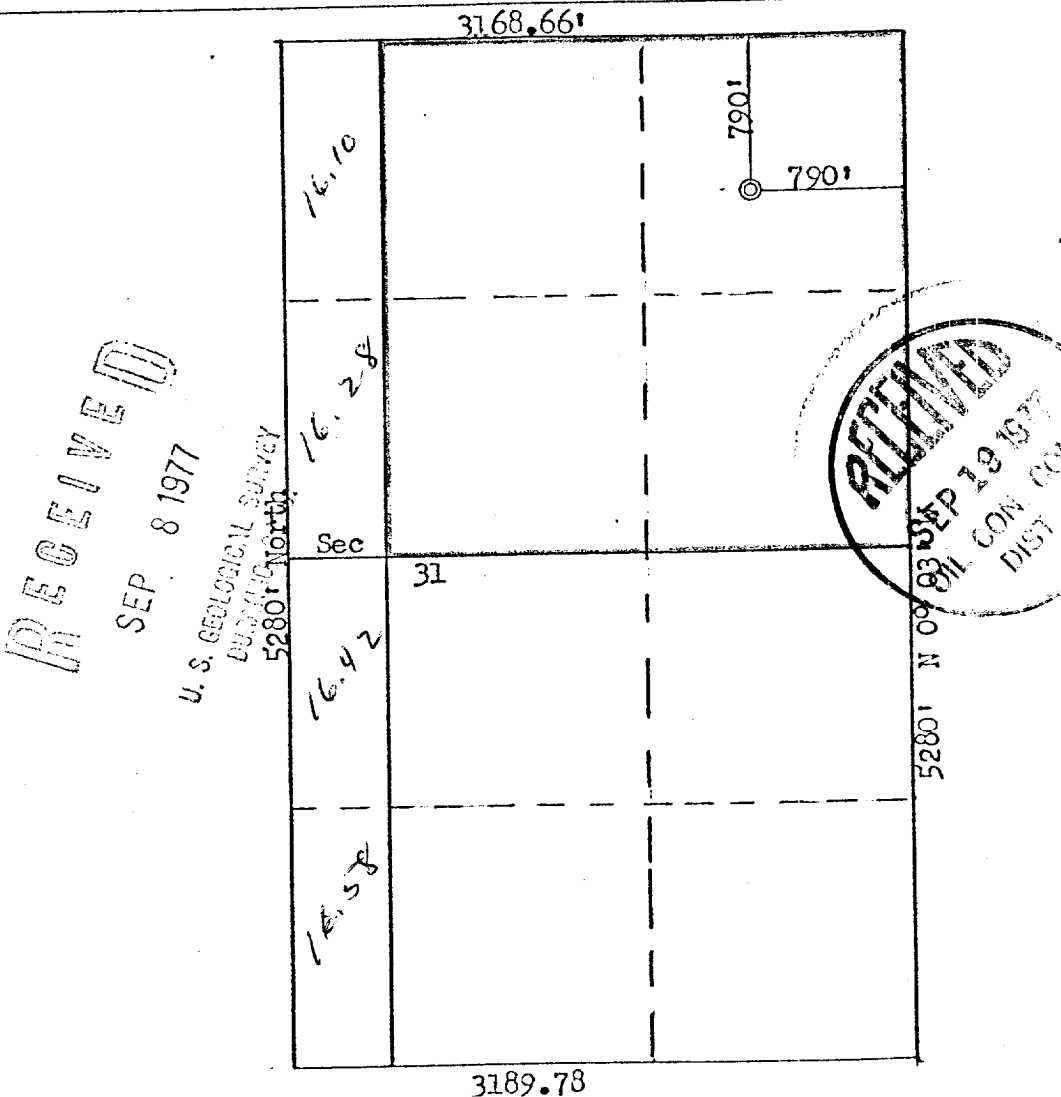
Operator <b>TransOcean Oil, Inc.</b>			Lease <b>Federal (10256)</b>		Well No. <b>1</b>
Unit Letter <b>A</b>	Section <b>31</b>	Township <b>24N</b>	Range <b>3W</b>	County <b>Rio Arriba</b>	
Actual Footage Location of Wells					
<b>790</b> feet from the <b>North</b> line and		<b>790</b> feet from the <b>East</b> line			
Ground Level Elev: <b>7269</b>	Producing Formation <b>Dakota</b>	Pool <b>Chacon-Dakota Oil Pool <i>exx</i></b>		Dedicated Acreage: <b>160</b>	Acres

1. Outline the acreage dedicated to the subject well by colored pencil or hatchure marks on the plat below.
2. If more than one lease is dedicated to the well, outline each and identify the ownership thereof (both as to working interest and royalty).
3. If more than one lease of different ownership is dedicated to the well, have the interests of all owners been consolidated by communitization, unitization, force-pooling, etc?

☐ Yes    ☒ No    If answer is "yes," type of consolidation \_\_\_\_\_

If answer is "no," list the owners and tract descriptions which have actually been consolidated. (Use reverse side of this form if necessary.) \_\_\_\_\_

No allowable will be assigned to the well until all interests have been consolidated (by communitization, unitization, forced-pooling, or otherwise) or until a non-standard unit, eliminating such interests, has been approved by the Commission.



**CERTIFICATION**

I hereby certify that the information contained herein is true and complete to the best of my knowledge and belief.

*Jerry M. Crews*  
**Jerry M. Crews**  
Name

**Drilling Engineer**  
Position

**TransOcean Oil, Inc.**  
Company

**9/7/77**  
Date

I hereby certify that the well location shown on this plat was plotted from field notes of actual surveys made by me or under my supervision, and that the same is true and correct to the best of my knowledge and belief.

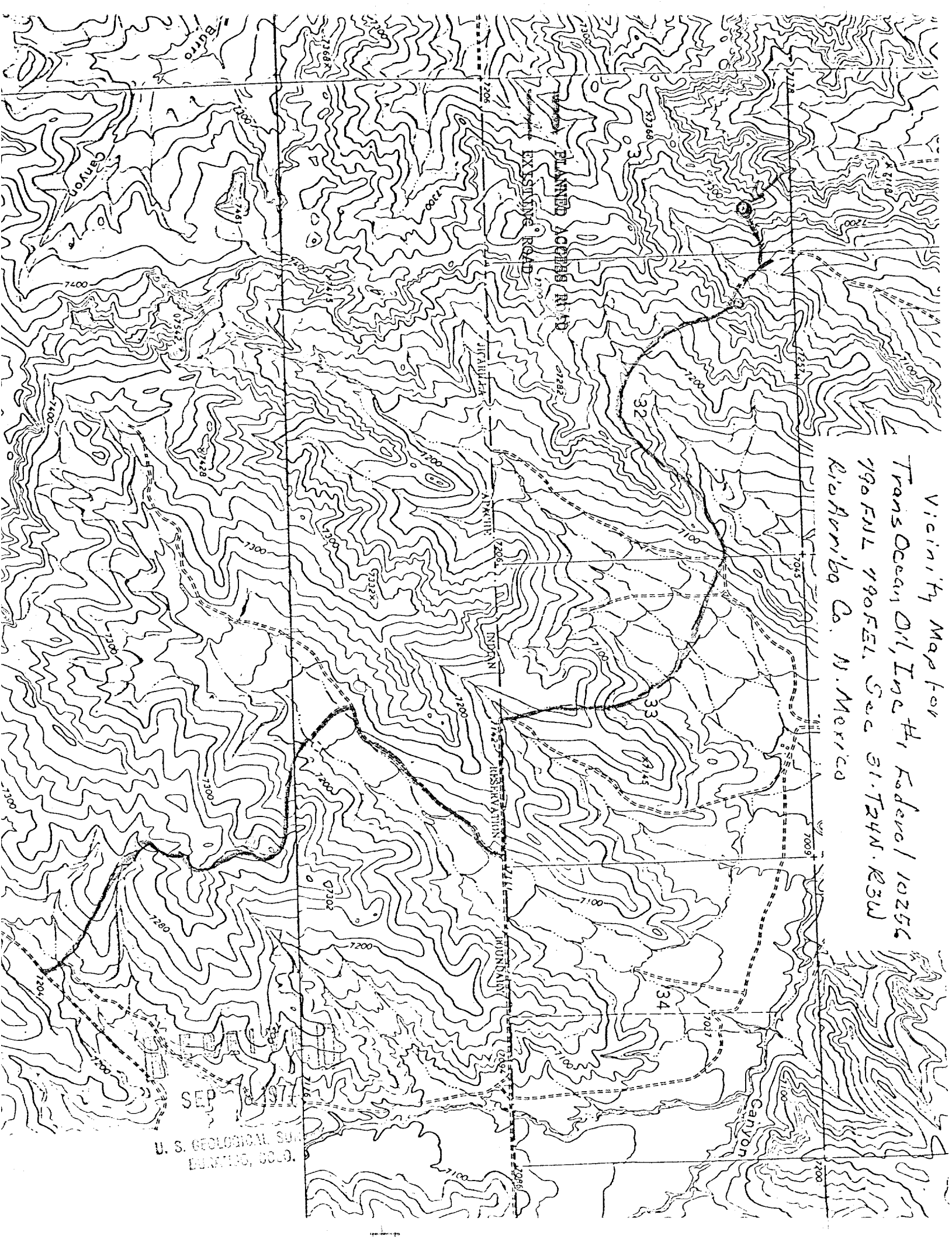
Date Surveyed  
**September 6, 1977**

Registered Professional Engineer  
and Land Surveyor

*Fred B. Kerr, Jr.*  
**Fred B. Kerr, Jr.**

Certificate No.  
**3950**

Vicinity Map for  
Trans Ocean Oil, Inc. H. Federal 10256  
190 FILL 190 FILL. See 31.724N. R3W  
Rio Arriba Co. N. Mexico



SEP 1977  
U. S. GEOLOGICAL SURVEY  
DUNSMITH, G.C.O.