

OIL CONSERVATION COMMISSION  
Antelope DISTRICT



OIL CONSERVATION COMMISSION  
BOX 2088  
SANTA FE, NEW MEXICO

DATE 1-27-78

RE: Proposed MC \_\_\_\_\_  
Proposed DHC \_\_\_\_\_  
Proposed NSL \_\_\_\_\_  
Proposed SWD \_\_\_\_\_  
Proposed WFX \_\_\_\_\_  
Proposed PMX \_\_\_\_\_

" NWU ✓

R. L. Stametz

Gentlemen:

I have examined the application dated 1-19-78  
for the Cotton Petroleum Corp Apache #106 A-1-24N-4W  
Operator Lease and Well No. Unit, S-T-R

and my recommendations are as follows:

Approve  
\_\_\_\_\_  
\_\_\_\_\_  
\_\_\_\_\_  
\_\_\_\_\_  
\_\_\_\_\_

Yours very truly,

AR Kendrick

# Walsh

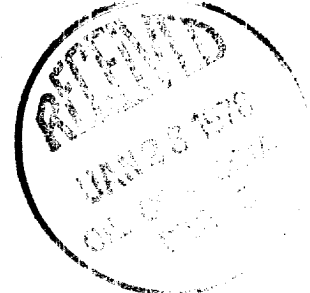
ENGINEERING & PRODUCTION CORP.

PETROLEUM ENGINEERING  
RESERVOIR STUDIES  
EVALUATIONS  
GEOLOGICAL STUDIES  
LEASE MANAGEMENT  
CONTRACT PUMPING  
DRILLING SUPERVISION  
WORKOVER SUPERVISION

January 19, 1978

EWELL N. WALSH, P.E.  
President

Mr. J. D. Ramey, Secretary Director  
New Mexico Oil Conservation Commission  
P. O. Box 2088  
Santa Fe, New Mexico 87501



Ref: Non-Standard Proration Unit  
Cotton Petroleum Corporation  
Apache No. 106  
Unit A, Sec. 1-T24N-R4W, N.M.P.M.  
Lindrith Gallup-Dakota, West  
Oil Pool  
Rio Arriba County, New Mexico  
Jicarilla Contract No. 126

Dear Mr. Ramey:

This request for administrative approval of a non-standard proration unit for the above-referred-to well is being presented on behalf of the operator, Cotton Petroleum Corporation. This request is being presented in accordance with the procedure set forth in Order R-4314.

The subject well is located 2040' from the North Line, 945' from the East Line of Section 1-T24N-R4W, Rio Arriba County, New Mexico. See attached Well Location and Acreage Dedication plat.

Due to the configuration of Section 1 and the location of the subject well it would be impossible to establish a 160-acre proration unit without having to exclude a portion of the Northeast Quarter of the section which is a legal subdivision.

Therefore, it is requested that the 220.47 acres included in the Northeast portion of Section 1-T24N-R4W be approved as a non-Standard Proration Unit for the above-referred-to well.

Copies of this request are being sent to the offset operators of Gallup-Dakota wells, as indicated on attached map, by Certified Mail.

Re: Mr. J. D. Ramey  
January 19, 1978  
Cotton Petroleum Corporation  
Apache No. 106

Thank you for your cooperation and consideration in this matter.

Very truly yours,



Ewell N. Walsh, P.E.  
President

ENW:rr

cc: Cotton Petroleum Corporation/w-encl.  
USGS, Durango, Colorado/w-encl.  
NMOCC, Axtec, N.M./w-encl.  
Mr. A.A. Phillips, Exxon Company, U.S.A./w-encl.  
Mr. Larry Van Ryan, Aztec Oil & Gas Co., Farmington, N.M./w-encl.  
J. Felix Hickman/w-encl.  
Brooks Hall Oil Corporation/w-encl.  
Mr. J. Jones, Getty Oil Company/w-encl.

Encl.

**NEW MEXICO OIL CONSERVATION COMMISSION  
WELL LOCATION AND ACREAGE DEDICATION PLAT**

Form C-102  
Supersedes C-128  
Effective 1-4-65

All distances must be from the outer boundaries of the Section.

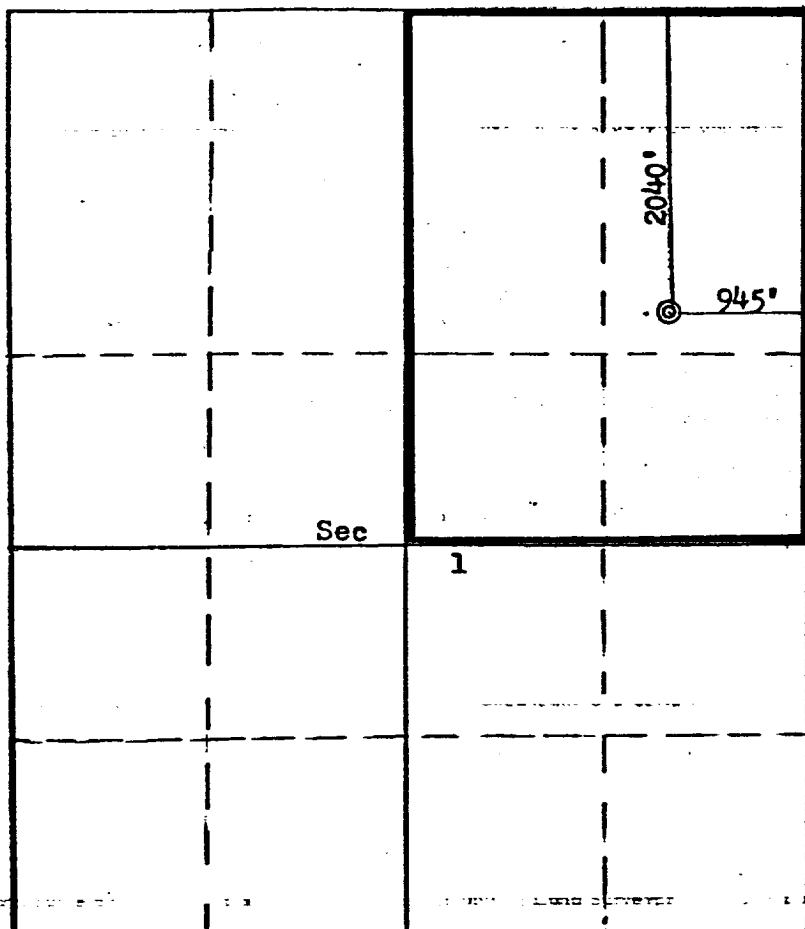
Operator <b>Cotton Petroleum Corporation</b>			Lease <b>Apache</b>		Well No. <b>106</b>
Unit Letter <b>A</b>	Section <b>1</b>	Township <b>24N</b>	Range <b>4W</b>	County <b>Rio Arriba</b>	
Actual Footage Location of Wells <b>2040</b> feet from the <b>North</b> line and <b>945</b> feet from the <b>East</b> line					
Ground Level Elev: <b>7008</b>	Producing Formation <b>Gallup-Dakota</b>		Pool <b>Lindrith Gallup-Dakota West</b>		Dedicated Acreage <b>220.47</b> Acres

1. Outline the acreage dedicated to the subject well by colored pencil or hachure marks on the plat below.
2. If more than one lease is dedicated to the well, outline each and identify the ownership thereof (both as to working interest and royalty).
3. If more than one lease of different ownership is dedicated to the well, have the interests of all owners been consolidated by communitization, unitization, force-pooling, etc?

☐ Yes ☐ No If answer is "yes," type of consolidation \_\_\_\_\_

If answer is "no," list the owners and tract descriptions which have actually been consolidated. (Use reverse side of this form if necessary.) \_\_\_\_\_

No allowable will be assigned to the well until all interests have been consolidated (by communitization, unitization, forced-pooling, or otherwise) or until a non-standard unit, eliminating such interests, has been approved by the Commission.



**CERTIFICATION**

I hereby certify that the information contained herein is true and complete to the best of my knowledge and belief.

*Ewell N. Walsh*

Name  
**Ewell N. Walsh, P.E.**  
Position  
**President**  
Company  
**Walsh Engr. & Prod. Corp.**  
Date  
**11-4-77**

I hereby certify that the well location shown on this plat was plotted from field notes of actual surveys made by me or under my supervision, and that the same is true and correct to the best of my knowledge and belief.

Date Surveyed  
**October 22, 1977**  
Registered Professional Engineer and Land Surveyor  
*Fred B. Kerr*  
**Fred B. Kerr**  
Certificate No.  
**3950**

SCALE: 1"=1320'

R4W

R3W

CONOCO

GETTY OIL COMPANY

35

AMOCO

36

EXON

AZTEC  
O & G

31

T25N

T24N

COTTON PETROLEUM CORP.

COTTON PETROLEUM CORP.

J. FELIX  
HICKMAN

2

NWP

1

BROOKS HALL

106  
APACHE

6

COTTON PETROLEUM CORP.

COTTON PETROLEUM CORP.

J. FELIX  
HICKMAN

. 11

12

7

COTTON PETROLEUM CORPORATION

APACHE NO. 106

2040' FNL, 945' FEL, Sec. 1-T24N-R4W

Rio Arriba County New Mexico

**Walsh** ENGINEERING & PRODUCTION CORP.