

UNITED STATES  
DEPARTMENT OF THE INTERIOR  
GEOLOGICAL SURVEY

30-039-21538  
5. LEASE DESIGNATION AND SERIAL NO.  
Contract No. 127  
6. IF INDIAN, ALLOTTEE OR TRIBE NAME  
Jicarilla Apache  
7. UNIT AGREEMENT NAME  
8. FARM OR LEASE NAME  
Apache  
9. WELL NO.  
104  
10. FIELD AND POOL, OR WILDCAT  
Lindrith Gallup-  
Dakota West  
11. SEC., T., R., M., OR BLK.  
AND SURVEY OR AREA  
Sec. 3-T24N-R4W  
N.M.P.M.  
12. COUNTY OR PARISH  
Rio Arriba  
13. STATE  
NewMexico

APPLICATION FOR PERMIT TO DRILL, DEEPEN, OR PLUG BACK

1a. TYPE OF WORK  
DRILL ☒ DEEPEN ☐ PLUG BACK ☐

b. TYPE OF WELL  
OIL WELL ☒ GAS WELL ☐ OTHER ☐ SINGLE ZONE ☐ MULTIPLE ZONE ☐

2. NAME OF OPERATOR  
COTTON PETROLEUM CORPORATION

3. ADDRESS OF OPERATOR  
1660 Lincoln St.  
2502 Lincoln Center Bldg. Denver, Colo. 80264

4. LOCATION OF WELL (Report location clearly and in accordance with any State requirements.)  
At surface 790'FSL, 790'FEL

At proposed prod. zone

14. DISTANCE IN MILES AND DIRECTION FROM NEAREST TOWN OR POST OFFICE\*

10. DISTANCE FROM PROPOSED\*  
LOCATION TO NEAREST  
PROPERTY OR LEASE LINE, FT.  
(Also to nearest drig. unit line, if any) 790'

16. NO. OF ACRES IN LEASE  
-

17. NO. OF ACRES ASSIGNED  
TO THIS WELL 160 Acres

18. DISTANCE FROM PROPOSED LOCATION\*  
TO NEAREST WELL, DRILLING, COMPLETED,  
OR APPLIED FOR, ON THIS LEASE, FT.

19. PROPOSED DEPTH  
7500'

20. ROTARY OR CABLE TOOLS  
Rotary

21. ELEVATIONS (Show whether DF, RT, GR, etc.)  
6810'GR

22. APPROX. DATE WORK WILL START\*  
11-20-77

23. PROPOSED CASING AND CEMENTING PROGRAM

SIZE OF HOLE	SIZE OF CASING	WEIGHT PER FOOT	SETTING DEPTH	QUANTITY OF CEMENT
12 1/4"	8-5/8	24.0	300'	300 sacks
7 7/8"	4-1/2	10.50 & 11.60	7500'	To be determined

It is proposed to drill this well with rotary tools, and drilling mud as a circulation medium, through the Dakota Formation. Possible production zones in the Gallup and Dakota Formation will be completed and downhole commingled. Production casing will be cemented in such a manner as to protect the Pictured Cliffs Formation.

Estimated Formation Tops

Pictured Cliffs	2980'	Greenhorn	7080'
Cliff House	4630'	Graneros	7140'
Gallup	6260'	Dakota	7160'

The SE/4 of Section 3 is dedicated to this well. 160 Acres. The natural gas to be produced from this well is committed.

FOR: COTTON PETROLEUM CORPORATION

IN ABOVE SPACE DESCRIBE PROPOSED PROGRAM: If proposal is to deepen or plug back, give data on present productive zone and proposed new productive zone. If proposal is to drill or deepen directionally, give pertinent data on subsurface locations and measured and true vertical depths. Give blowout preventer program, if any.

24.

SIGNED Ewell N. Walsh, P.E.

TITLE President, Walsh  
Engr. & Prod. Corp.

DATE 11-4-77

(This space for Federal or State office use)

PERMIT NO.

APPROVAL DATE

APPROVED BY

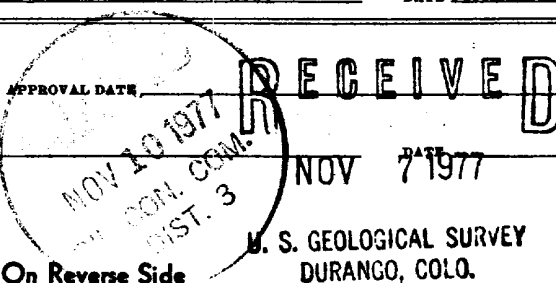
TITLE

CONDITIONS OF APPROVAL, IF ANY:

*OK*

\*See Instructions On Reverse Side

U. S. GEOLOGICAL SURVEY  
DURANGO, COLO.



**NEW MEXICO OIL CONSERVATION COMMISSION  
WELL LOCATION AND ACREAGE DEDICATION PLAT**

Form C-102  
Supersedes C-128  
Effective 1-1-65

All distances must be from the outer boundaries of the Section.

Operator <b>Cotton Petroleum Corporation</b>			Lease <b>Apache</b>		Well No. <b>104</b>
Unit Letter <b>P</b>	Section <b>3</b>	Township <b>24N</b>	Range <b>4W</b>	County <b>Rio Arriba</b>	
Actual Footage Location of Well:					
<b>790'</b>		feet from the <b>South</b>	line and <b>790</b>	feet from the <b>East</b>	line
Ground Level Elev. <b>6810</b>	Producing Formation <b>Gallup-Dakota</b>		Pool <b>Lindrith Gallup - Dakota West</b>	Dedicated Acreage: <b>160</b> Acres	

1. Outline the acreage dedicated to the subject well by colored pencil or hachure marks on the plat below.
2. If more than one lease is dedicated to the well, outline each and identify the ownership thereof (both as to working interest and royalty).
3. If more than one lease of different ownership is dedicated to the well, have the interests of all owners been consolidated by communitization, unitization, force-pooling, etc?

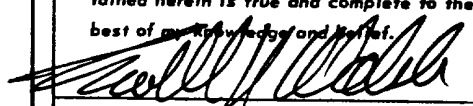
☐ Yes   ☐ No   If answer is "yes," type of consolidation \_\_\_\_\_

If answer is "no," list the owners and tract descriptions which have actually been consolidated. (Use reverse side of this form if necessary.) \_\_\_\_\_

No allowable will be assigned to the well until all interests have been consolidated (by communitization, unitization, forced-pooling, or otherwise) or until a non-standard unit, eliminating such interests, has been approved by the Commission.

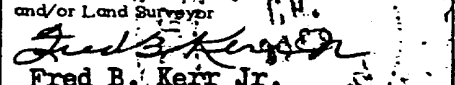
**CERTIFICATION**

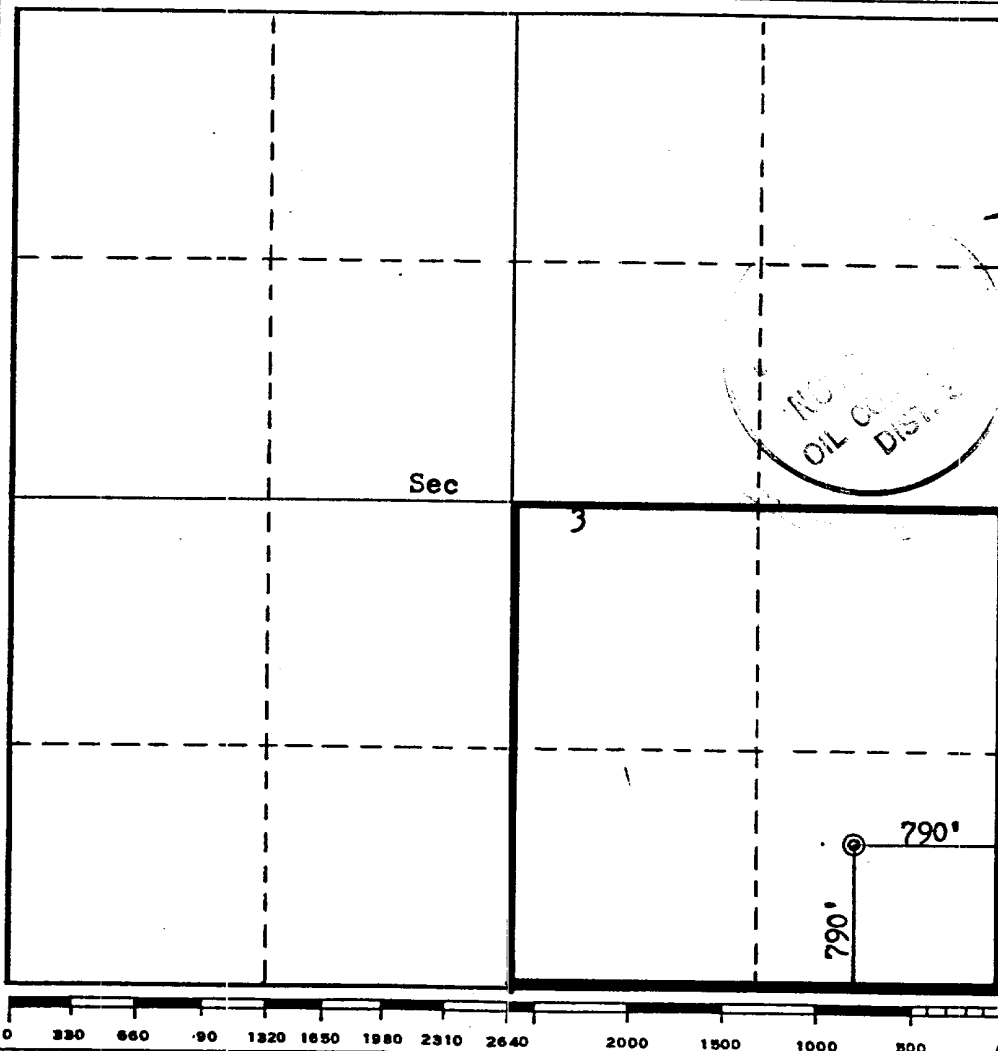
I hereby certify that the information contained herein is true and complete to the best of my knowledge and belief.

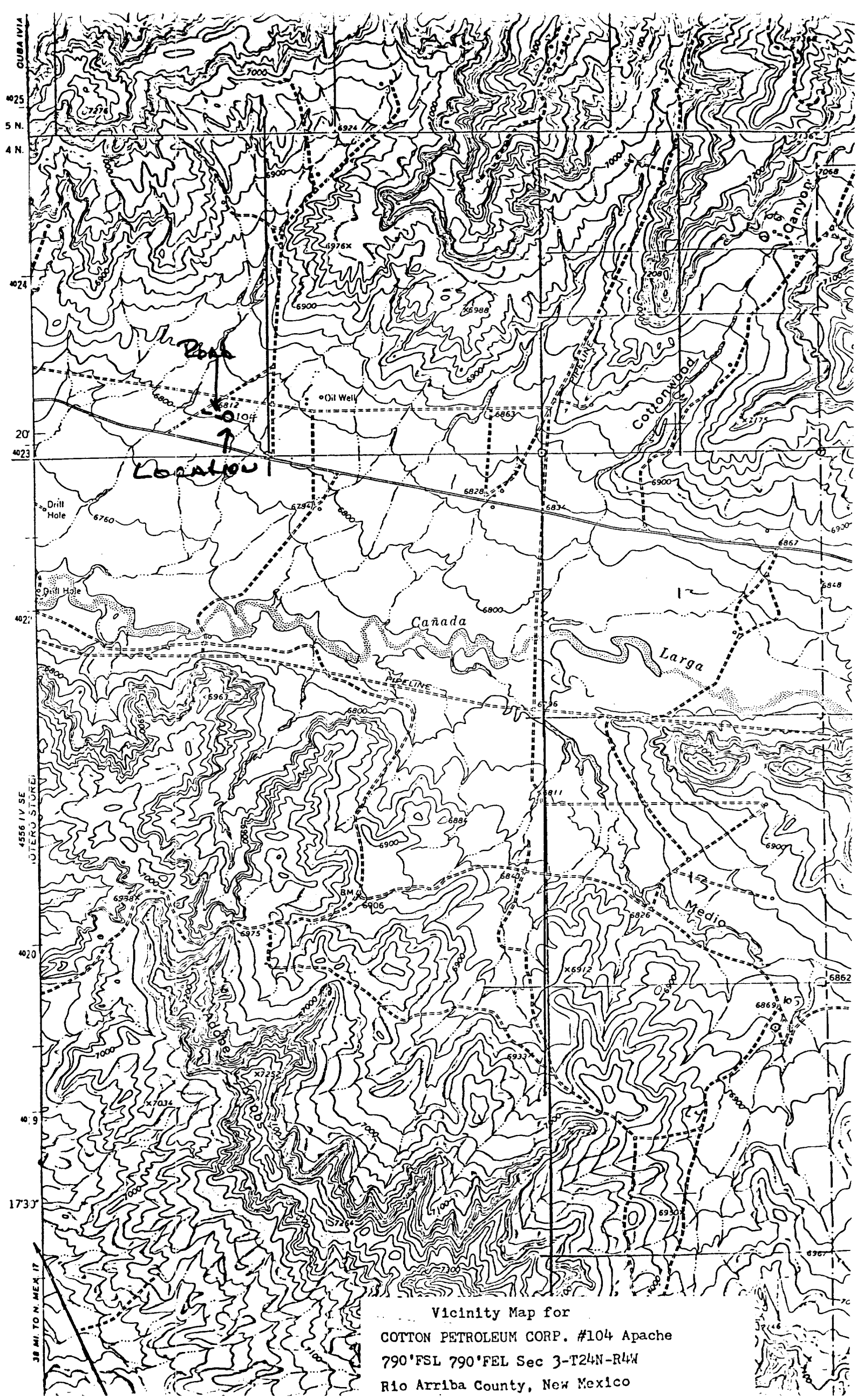


Name
<b>Ewell N. Walsh, P.E.</b>
Position
<b>President</b>
Company
<b>Walsh Engr. &amp; Prod. Corp.</b>
Date
<b>11-4-77</b>

I hereby certify that the well location shown on this plat was plotted from field notes of actual surveys made by me or under my supervision, and that the same is true and correct to the best of my knowledge and belief.

Date Surveyed
<b>October 22, 1977</b>
Registered Professional Engineer and/or Land Surveyor
 <b>Fred B. Kerr Jr.</b>
Certificate No.
<b>3950</b>





Vicinity Map for  
COTTON PETROLEUM CORP. #104 Apache  
790'FSL 790'FEL Sec 3-T24N-R4W  
Rio Arriba County, New Mexico