

UNITED STATES
DEPARTMENT OF THE INTERIOR
GEOLOGICAL SURVEY

APPLICATION FOR PERMIT TO DRILL, DEEPEN, OR PLUG BACK

1a. TYPE OF WORK

DRILL ☒DEEPEN ☐PLUG BACK ☐

b. TYPE OF WELL

OIL
WELL ☐GAS
WELL ☒

OTHER

SINGLE
ZONE ☒MULTIPLE
ZONE ☐

2. NAME OF OPERATOR

Supron Energy Corporation

3. ADDRESS OF OPERATOR

P.O. Box 808, Farmington, New Mexico 87401

4. LOCATION OF WELL (Report location clearly and in accordance with any State requirements.)*

At surface

940 Feet from the North line and 1850 feet from the East line

At proposed prod. zone

Same as above

14. DISTANCE IN MILES AND DIRECTION FROM NEAREST TOWN OR POST OFFICE*

5.5 Miles Northwest of Ojito, New Mexico

15. DISTANCE FROM PROPOSED* LOCATION TO NEAREST PROPERTY OR LEASE LINE, FT.
(Also to nearest drilg. unit line, if any)

940' from lease line

940' / Drilg. line

18. DISTANCE FROM PROPOSED LOCATION* TO NEAREST WELL, DRILLING, COMPLETED, OR APPLIED FOR, ON THIS LEASE, FT.

2440'

16. NO. OF ACRES IN LEASE

2560

19. PROPOSED DEPTH

3525

17. NO. OF ACRES ASSIGNED TO THIS WELL

160.58

159.51

20. ROTARY OR CABLE TOOLS

Rotary

21. ELEVATIONS (Show whether DF, RT, GR, etc.)

6800 GR

22. APPROX. DATE WORK WILL START*

January 15, 1978

23.

PROPOSED CASING AND CEMENTING PROGRAM

SIZE OF HOLE	SIZE OF CASING	WEIGHT PER FOOT	SETTING DEPTH	QUANTITY OF CEMENT
9-7/8"	7-5/8"	26.40	200	100 cu. ft.
6-3/4"	4-1/2"	10.50	3525	760 cu. ft.

This well will be drilled and completed in the Pictured Cliffs formation. After pipe is set and cemented the pipe will be perforated, then the well will be sand water fraced to stimulate production. 1-1/2" Tubing will be set at approximately 3300 feet.

Gas is dedicated

IN ABOVE SPACE DESCRIBE PROPOSED PROGRAM: If proposal is to deepen or plug back, give data on present productive zone and proposed new productive zone. If proposal is to drill or deepen directionally, give pertinent data on subsurface locations and measured and true vertical depths. Give blowout preventer program, if any.

24.

SIGNED

Rudy D. Mott

TITLE

Area Superintendent

DATE

Oct. 27, 1977

(This space for Federal or State office use)

PERMIT NO.

APPROVAL DATE

APPROVED BY

TITLE

DATE

CONDITIONS OF APPROVAL, IF ANY:

*See Instructions On Reverse Side

Instructions

General: This form is designed for submitting proposals to perform certain well operations, as indicated, on all types of lands and leases for appropriate action by either a Federal or a State agency, or both, pursuant to applicable Federal and/or State laws and regulations. Any necessary special instructions concerning the use of this form and the number of copies to be submitted, particularly with regard to local, area, or regional procedures and practices, either are shown below or will be issued by, or may be obtained from, the local Federal and/or State office.

Item 1: If the proposal is to redrill to the same reservoir at a different subsurface location or to a new reservoir, use this form with appropriate notations. Consult applicable State or Federal regulations concerning subsequent work proposals or reports on the well.

Item 4: If there are no applicable State requirements, locations on Federal or Indian land should be described in accordance with Federal requirements. Consult local State or Federal office for specific instructions.

Item 14: Needed only when location of well cannot readily be found by road from the land or lease description. A plat, or plats, separate or on this reverse side, showing the roads to, and the surveyed location of, the well, and any other required information, should be furnished when required by Federal or State agency offices.

Items 15 and 18: If well is to be, or has been directionally drilled, give distances for subsurface location of hole in any present or objective production zone.

Item 22: Consult applicable Federal or State regulations, or appropriate officials, concerning approval of the proposal before operations are started.

**NEW MEXICO OIL CONSERVATION COMMISSION
WELL LOCATION AND ACERAGE DEDICATION PLAT**

All distances must be from the outer boundaries of the Section

Operator SUPRON ENERGY CORPORATION			Lease JICARILLA "K"		Well No. 20
Unit Letter B	Section 2	Township 25 NORTH	Range 5 WEST	County RIO ARriba	
Actual Footage Location of Well: 940 feet from the NORTH line and 1850 feet from the EAST line					
Ground Level Elev. 6808	Producing Formation Pictured Cliffs		Pool South Blanco	Dedicated Acreage: 160.38 159.5 (Acres	

1. Outline the acreage dedicated to the subject well by colored pencil or hachure marks on the plat below.
2. If more than one lease is dedicated to the well, outline each and identify the ownership thereof (both as to working interest and royalty),
3. If more than one lease of different ownership is dedicated to the well, have the interests of all owners been consolidated by communitization, unitization, force-pooling, etc?

() Yes () No If answer is "yes," type of consolidation

If answer is "no," list the owners and tract descriptions which have actually consolidated. (Use reverse side of this form if necessary.)

No allowable will be assigned to the well until all interests have been consolidated (by communitization, unitization, forced-pooling, or otherwise) or until a non standard unit, eliminating such interests, has been approved by the Commission.

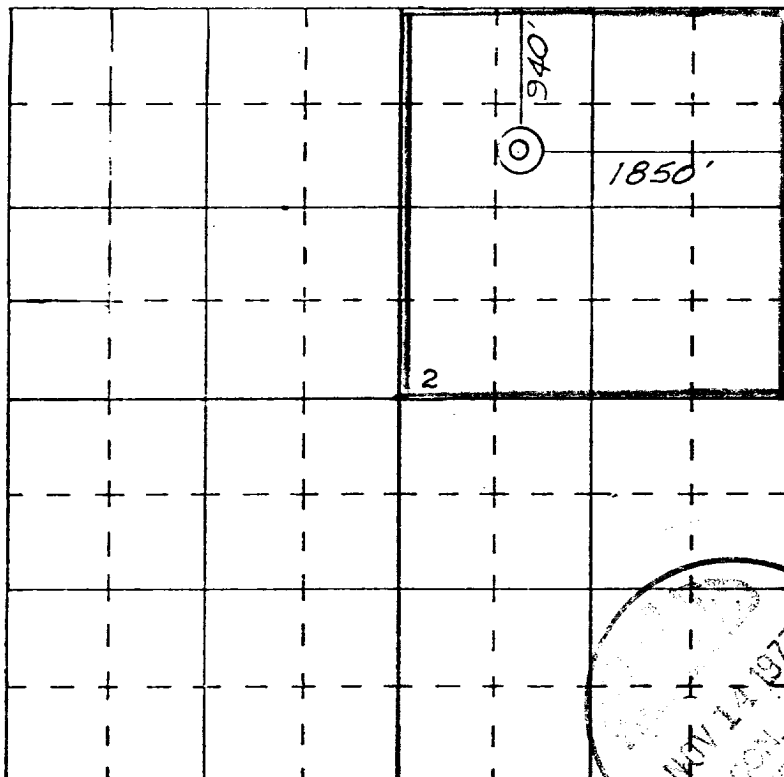
CERTIFICATION

I hereby certify that the information contained herein is true and complete to the best of my knowledge and belief.

Rudy D. Motte
 Name
Rudy D. Motte
 Position
Area Superintendent
 Company
Supron Energy Corporation
 Date
October 22, 1977

I hereby certify that the well location shown on this plat was plotted from field notes of actual surveys made by me or under my supervision, and that the same is true and correct to the best of my knowledge and belief.

22 October, 1977
 Date Surveyed
James P. Leese
 Registered Professional Engineer
 and/or Land Surveyor
James P. Leese
1463
 Certificate No.



SCALE—4 INCHES EQUALS 1 MILE

SAN JUAN ENGINEERING COMPANY, FARMINGTON, N. M.

