

UNITED STATES
DEPARTMENT OF THE INTERIOR
GEOLOGICAL SURVEY

APPLICATION FOR PERMIT TO DRILL, DEEPEN, OR PLUG BACK

1a. TYPE OF WORK

DRILL ☒DEEPEN ☐PLUG BACK ☐

b. TYPE OF WELL

OIL
WELL ☐GAS
WELL ☒

OTHER

SINGLE
ZONE ☒MULTIPLE
ZONE ☐

2. NAME OF OPERATOR

Continental Oil Company

3. ADDRESS OF OPERATOR

Box 460, Hobbs, N.M. 88240

4. LOCATION OF WELL (Report location clearly and in accordance with any State requirements.)*

At surface

N 1150' FSL + 1820' FWL

At proposed prod. zone

Same

14. DISTANCE IN MILES AND DIRECTION FROM NEAREST TOWN OR POST OFFICE*

10. DISTANCE FROM PROPOSED*

LOCATION TO NEAREST
PROPERTY OR LEASE LINE, FT.
(Also to nearest drlg. unit line, if any)

18. DISTANCE FROM PROPOSED LOCATION*

TO NEAREST WELL, DRILLING, COMPLETED,
OR APPLIED FOR, ON THIS LEASE, FT.

21. ELEVATIONS (Show whether DF, RT, GR, etc.)

6686' GR

23.

PROPOSED CASING AND CEMENTING PROGRAM

| SIZE OF HOLE | SIZE OF CASING | WEIGHT PER FOOT | SETTING DEPTH | QUANTITY OF CEMENT |
|--------------|----------------|-----------------|---------------|--------------------|
| 12 1/4" | 8 5/8" | 24# | 500' | 310 SX CIVC. |
| 7 7/8" | 5 1/2" | 15.5 | 5350' | 490 SX |

IT IS PROPOSED TO DRILL A STRAIGHT HOLE TO A TOTAL
DEPTH OF 5350' AND COMPLETE AS A GONZALES
MESA VERDE GAS WELL.

See Attached For BOP Program

See Attached Proposed Well Plan For Formation TOPS,
Logging, Mud Program, ETC.

The Acreage is Dedicated to A Gas Purchase

IN ABOVE SPACE DESCRIBE PROPOSED PROGRAM: If proposal is to deepen or plug back, give data on present productive zone and proposed new productive zone. If proposal is to drill or deepen directionally, give pertinent data on subsurface locations and measured and true vertical depths. Give blowout preventer program, if any.

24.

SIGNED

TITLE

Admin. Supv.

DATE

11-10-77

(This space for Federal or State office use)

PERMIT NO.

APPROVAL DATE

APPROVED BY

TITLE

DATE

CONDITIONS OF APPROVAL, IF ANY:

Alcal

*See Instructions On Reverse Side

USGS - Dwyango (6), Gas Co. N.M., Exxon, MTL, BEA, File (2)

30-039-21542
5. LEASE DESIGNATION AND SERIAL NO.

Contract No. 147

6. IF INDIAN, ALLOTTEE OR TRIBE NAME

Ticorilla Apache

7. UNIT AGREEMENT NAME

8. FARM OR LEASE NAME

AXI Apache "J"

9. WELL NO.

31

10. FIELD AND POOL, OR WILDCAT

Gonzales Mesa Verde

11. SEC., T., R., M., OR BLK.
AND SURVEY OR AREA

Sec. 5, T-25N, R-5W

12. COUNTY OR PARISH

13. STATE

Rio Arriba

N.M.

17. NO. OF ACRES ASSIGNED
TO THIS WELL

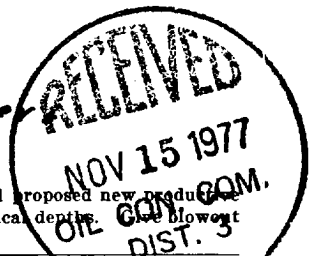
160

20. ROTARY OR CABLE TOOLS

Rotary

22. APPROX. DATE WORK WILL START*

2-15-78



NEW MEXICO OIL CONSERVATION COMMISSION
WELL LOCATION AND ACERAGE DEDICATION PLAT

All distances must be from the outer boundaries of the Section

| | | | | | |
|--|--|-------------------------------------|----------------------------------|-----------------------------|-----------------------|
| Operator CONTINENTAL OIL COMPANY | | | Lease AXI APACHE J | | Well No. 31 |
| Unit Letter N | Section 5 | Township 25 NORTH | Range 5 WEST | County RIO ARriba | |
| Actual Footage Location of Well: | | | | | |
| 1150 feet from the SOUTH line and | | 1820 feet from the WEST line | | | |
| Ground Level Elev. 6685 | Producing Formation Mosa Verde | Pool Gonzalos | Dedicated Acreage: 160 | | Acres |

1. Outline the acreage dedicated to the subject well by colored pencil or hatchure marks on the plat below.
2. If more than one lease is dedicated to the well, outline each and identify the ownership thereof (both as to working interest and royalty),
3. If more than one lease of different ownership is dedicated to the well, have the interests of all owners been consolidated by communitization, unitization, force-pooling, etc?

() Yes () No If answer is "yes," type of consolidation

If answer is "no," list the owners and tract descriptions which have actually consolidated. (Use reverse side of this form if necessary.)

No allowable will be assigned to the well until all interests have been consolidated (by communitization, unitization, forced-pooling, or otherwise) or until a non standard unit, eliminating such interests, has been approved by the Commission.

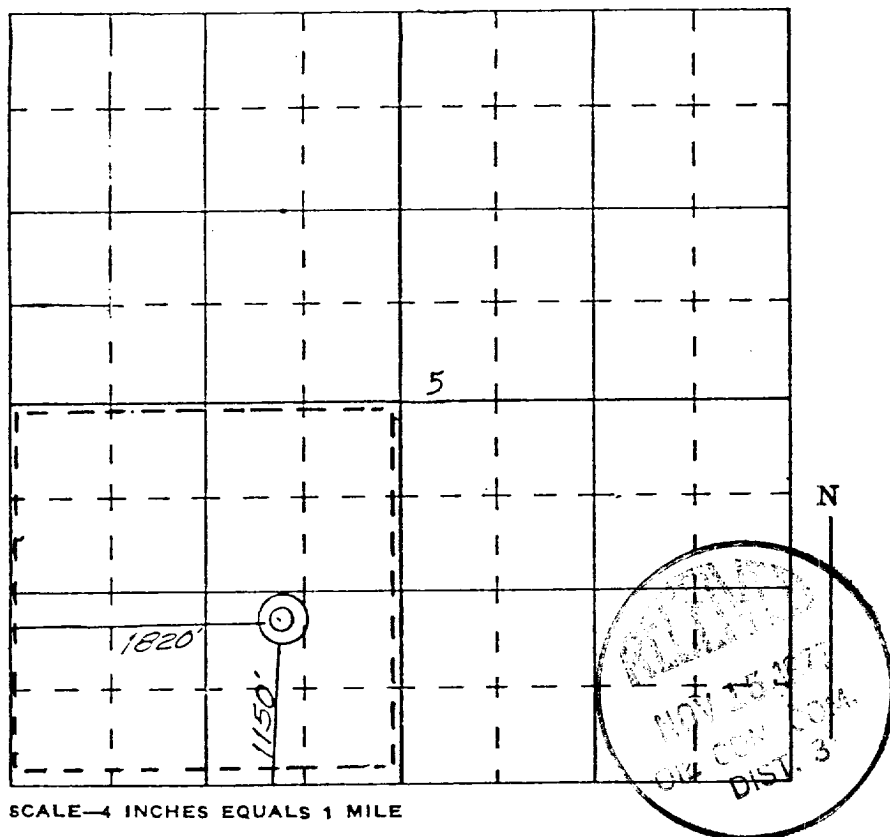
CERTIFICATION

I hereby certify that the information contained herein is true and complete to the best of my knowledge and belief.

Name **W. A. Butterfield**
 Position **ADMIN. SUPV.**
 Company **CONTINENTAL OIL Co.**
 Date **11-10-77**

I hereby certify that the well location shown on this plat was plotted from field notes of actual surveys made by me or under my supervision, and that the same is true and correct to the best of my knowledge and belief.

16 October, 1977
 Date Surveyed
James B. Leong
 Registered Professional Engineer
 and/or Land Surveyor



SCALE—4 INCHES EQUALS 1 MILE