

UNITED STATES  
DEPARTMENT OF THE INTERIOR  
GEOLOGICAL SURVEY

## APPLICATION FOR PERMIT TO DRILL, DEEPEN, OR PLUG BACK

## 1a. TYPE OF WORK

DRILL ☒DEEPEN ☐PLUG BACK ☐

## b. TYPE OF WELL

OIL  
WELL ☐GAS  
WELL ☒

OTHER

SINGLE  
ZONE ☒MULTIPLE  
ZONE ☐

## 2. NAME OF OPERATOR

Continental Oil Company

## 3. ADDRESS OF OPERATOR

Box 460, Hobbs, N.M., 88240

## 4. LOCATION OF WELL (Report location clearly and in accordance with any State requirements.)\*

At surface

O 1150' FSL + 1450' FEL

At proposed prod. zone

32m

## 14. DISTANCE IN MILES AND DIRECTION FROM NEAREST TOWN OR POST OFFICE\*

## 10. DISTANCE FROM PROPOSED\*

LOCATION TO NEAREST  
PROPERTY OR LEASE LINE, FT.  
(Also to nearest drlg. unit line, if any)18. DISTANCE FROM PROPOSED LOCATION\*  
TO NEAREST WELL, DRILLING, COMPLETED,  
OR APPLIED FOR, ON THIS LEASE, FT.

## 21. ELEVATIONS (Show whether DF, RT, GR, etc.)

6645' GR.

## 23.

## PROPOSED CASING AND CEMENTING PROGRAM

SIZE OF HOLE	SIZE OF CASING	WEIGHT PER FOOT	SETTING DEPTH	QUANTITY OF CEMENT
12 1/4"	8 5/8"	24#	500'	310 SX circ.
7 7/8"	5 1/2"	15.5#	5300'	490 SX

IT IS Proposed To Drill A Straight Hole To A Total  
Depth Of 5300' and complete AS A Gonzales Mesa  
Verde Gas Well.

See Attached For BOP Program.  
See Attached Proposed Well Plan For Formation TOPS  
Logging, Mud Program, ETC.  
The Acreage is Dedicated To A Gas Purchaser.

IN ABOVE SPACE DESCRIBE PROPOSED PROGRAM: If proposal is to deepen or plug back, give data on present productive zone and proposed new productive zone. If proposal is to drill or deepen directionally, give pertinent data on subsurface locations and measured and true vertical depths. Give blowout preventer program, if any.

## 24.

SIGNED

W. A. Butterfield

TITLE

Admin. Supv.

DATE

11-10-77

(This space for Federal or State office use)

PERMIT NO.

APPROVAL DATE

APPROVED BY

TITLE

CONDITIONS OF APPROVAL, IF ANY:

OK

\*See Instructions On Reverse Side

USGS, Durango (6), GAS CO. N.M., EXXON, MTL, BEA, F, L (2)

## 5. LEASE DESIGNATION AND SERIAL NO.

Contract No. 147

## 6. IF INDIAN, ALLOTTEE OR TRIBE NAME

Jicarilla Apache

## 7. UNIT AGREEMENT NAME

## 8. FARM OR LEASE NAME

AXI Apache "J"

## 9. WELL NO.

32

## 10. FIELD AND POOL, OR WILDCAT

Gonzales Mesa Verde

11. SEC., T., R., M., OR BLK.  
AND SURVEY OR AREA

Sec. 6, T-25N, R-5W

## 12. COUNTY OR PARISH

Rio Arriba

## 13. STATE

N.M.

17. NO. OF ACRES ASSIGNED  
TO THIS WELL

160

## 20. ROTARY OR CABLE TOOLS

Rotary

## 22. APPROX. DATE WORK WILL START\*

3-1-78



**NEW MEXICO OIL CONSERVATION COMMISSION  
WELL LOCATION AND ACERAGE DEDICATION PLAT**

All distances must be from the outer boundaries of the Section

Operator <b>CONTINENTAL OIL COMPANY</b>			Lease <b>AXI APACHE J</b>		Well No. <b>32</b>
Unit Letter <b>0</b>	Section <b>6</b>	Township <b>25 NORTH</b>	Range <b>5 WEST</b>	County <b>RIO ARriba</b>	
Actual Footage Location of Well:					
<b>1150</b> feet from the <b>SOUTH</b> line and		<b>1450</b> feet from the <b>EAST</b> line			
Ground Level Elev. <b>6645</b>	Producing Formation <b>Mesa Verde</b>	Pool <b>Gonzales</b>	Dedicated Acreage: <b>160</b>		Acres

1. Outline the acreage dedicated to the subject well by colored pencil or hachure marks on the plat below.
2. If more than one lease is dedicated to the well, outline each and identify the ownership thereof (both as to working interest and royalty),
3. If more than one lease of different ownership is dedicated to the well, have the interests of all owners been consolidated by communitization, unitization, force-pooling, etc?

( ) Yes ( ) No If answer is "yes," type of consolidation .....

If answer is "no," list the owners and tract descriptions which have actually consolidated. (Use reverse side of this form if necessary.) .....

No allowable will be assigned to the well until all interests have been consolidated (by communitization, unitization, forced-pooling, or otherwise) or until a non standard unit, eliminating such interests, has been approved by the Commission.

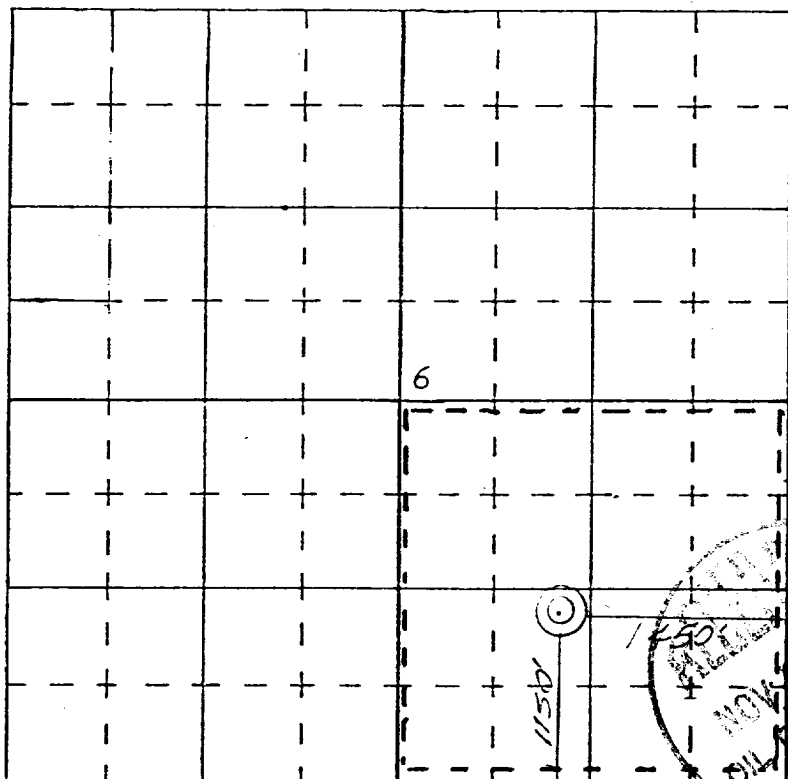
**CERTIFICATION**

I hereby certify that the information contained herein is true and complete to the best of my knowledge and belief.

Name *Wm. A. Hatterfield*  
 Position *ADMIN. Supt.*  
 Company *CONTINENTAL OIL CO.*  
 Date *11-10-77*

I hereby certify that the well location shown on this plat was plotted from field notes of actual surveys made by me or under my supervision, and that the same is true and correct to the best of my knowledge and belief.

*16 October, 1977*  
 Date Surveyed  
*James P. Leare*  
 Registered Professional Engineer  
 and/or Land Surveyor



SCALE—4 INCHES EQUALS 1 MILE