

UNITED STATES
DEPARTMENT OF THE INTERIOR
GEOLOGICAL SURVEY

APPLICATION FOR PERMIT TO DRILL, DEEPEN, OR PLUG BACK

1a. TYPE OF WORK

DRILL ☒DEEPEN ☐PLUG BACK ☐

b. TYPE OF WELL

OIL
WELL ☒GAS
WELL ☐OTHER ☐SINGLE
ZONE ☐MULTIPLE
ZONE ☐

2. NAME OF OPERATOR

3. ADDRESS OF OPERATOR

4. LOCATION OF WELL (Report location clearly and in accordance with any State requirements.*)

At surface

At proposed prod. zone

14. DISTANCE IN MILES AND DIRECTION FROM NEAREST TOWN OR POST OFFICE*

15. DISTANCE FROM PROPOSED*

LOCATION TO NEAREST
PROPERTY OR LEASE LINE, FT.
(Also to nearest drlg. unit line, if any)

18. DISTANCE FROM PROPOSED LOCATION*

TO NEAREST WELL, DRILLING, COMPLETED,
OR APPLIED FOR, ON THIS LEASE, FT.

21. ELEVATIONS (Show whether DF, RT, GR, etc.)

23.

PROPOSED CASING AND CEMENTING PROGRAM

SIZE OF HOLE	SIZE OF CASING	WEIGHT PER FOOT	SETTING DEPTH	QUANTITY OF CEMENT
12 1/4"	New 8 5/8"	24#	1000'	600 SX CIRC.
7 7/8"	New 5 1/2"	15.5# + 17#	4500'	1267 SX

IT IS Proposed TO Drill A Straight Hole TO A
T.D. OF and complete AS A West Lindrith
Gallup Dakota Oil Well.

See Attached For B.O.P. Program

See Attached Proposal Well Plan For Formation Tops, Logging, ETC.

IN ABOVE SPACE DESCRIBE PROPOSED PROGRAM: If proposal is to deepen or plug back, give data on present productive zone and proposed new productive zone. If proposal is to drill or deepen directionally, give pertinent data on subsurface locations and measured and true vertical depths. Give blowout preventer program, if any.

24.

SIGNED

TITLE

DATE

(This space for Federal or State office use)

PERMIT NO.

APPROVAL DATE

APPROVED BY

TITLE

CONDITIONS OF APPROVAL, IF ANY:

RECEIVED

JAN 10 1978

U. S. GEOLOGICAL SURVEY
DURANGO, COLO.

*See Instructions On Reverse Side

USGS-Durango (6), El Paso, MTL, BEA, File (2)

NEW MEXICO OIL CONSERVATION COMMISSION
WELL LOCATION AND ACREAGE DEDICATION PLAT

Form C-102
Supersedes C-128
Effective 1-1-65

All distances must be from the outer boundaries of the Section.

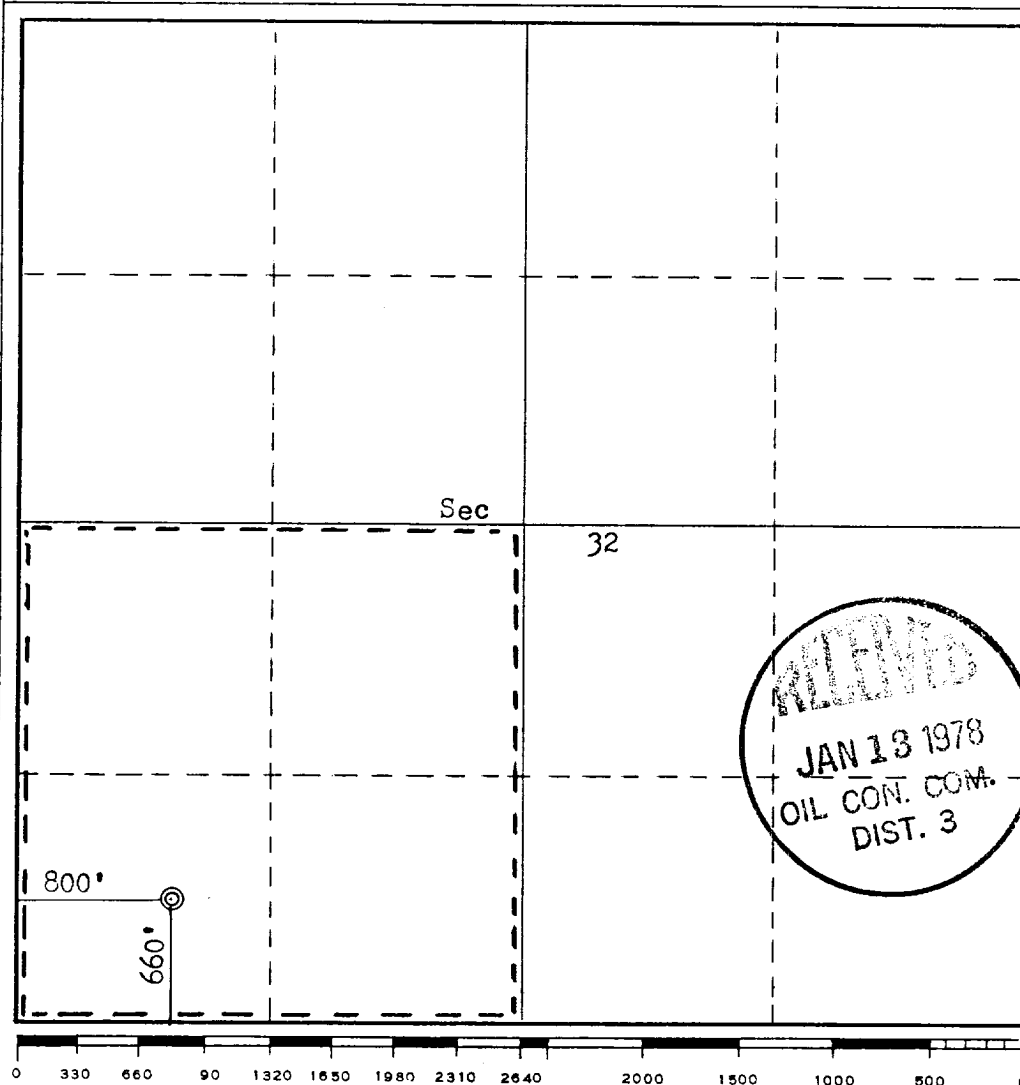
Operator Continental Oil Company			Lease Jicarilla 30		Well No. 8
Unit Letter M	Section 32	Township 25N	Range 4W	County Rio Arriba	
Actual Footage Location of Well: 660 feet from the South line and 800 feet from the West line					
Ground Level Elev. 6799	Producing Formation Gallup Dakota		Pool West Lindrieth	Dedicated Acreage: 160 Acres	

- Outline the acreage dedicated to the subject well by colored pencil or hachure marks on the plat below.
- If more than one lease is dedicated to the well, outline each and identify the ownership thereof (both as to working interest and royalty).
- If more than one lease of different ownership is dedicated to the well, have the interests of all owners been consolidated by communitization, unitization, force-pooling, etc?

☐ Yes ☐ No If answer is "yes," type of consolidation _____

If answer is "no," list the owners and tract descriptions which have actually been consolidated. (Use reverse side of this form if necessary.) _____

No allowable will be assigned to the well until all interests have been consolidated (by communitization, unitization, forced-pooling, or otherwise) or until a non-standard unit, eliminating such interests, has been approved by the Commission.



CERTIFICATION

I hereby certify that the information contained herein is true and complete to the best of my knowledge and belief.

Name
Wm. A. Butterfield
Position
ADMIN. SUPERV.
Company
Continental Oil Co.
Date
1-4-78

I hereby certify that the well location shown on this plat was plotted from field notes of actual surveys made by me or under my supervision, and that the same is true and correct to the best of my knowledge and belief.

Date Surveyed
November 16, 1977

Registered Professional Engineer and/or Land Surveyor
Fred B. Kerr Jr.
Fred B. Kerr Jr.

Certificate No.
3950

ATTACHMENT TO FORM 9-331 C
APPLICATION FOR PERMIT TO DRILL

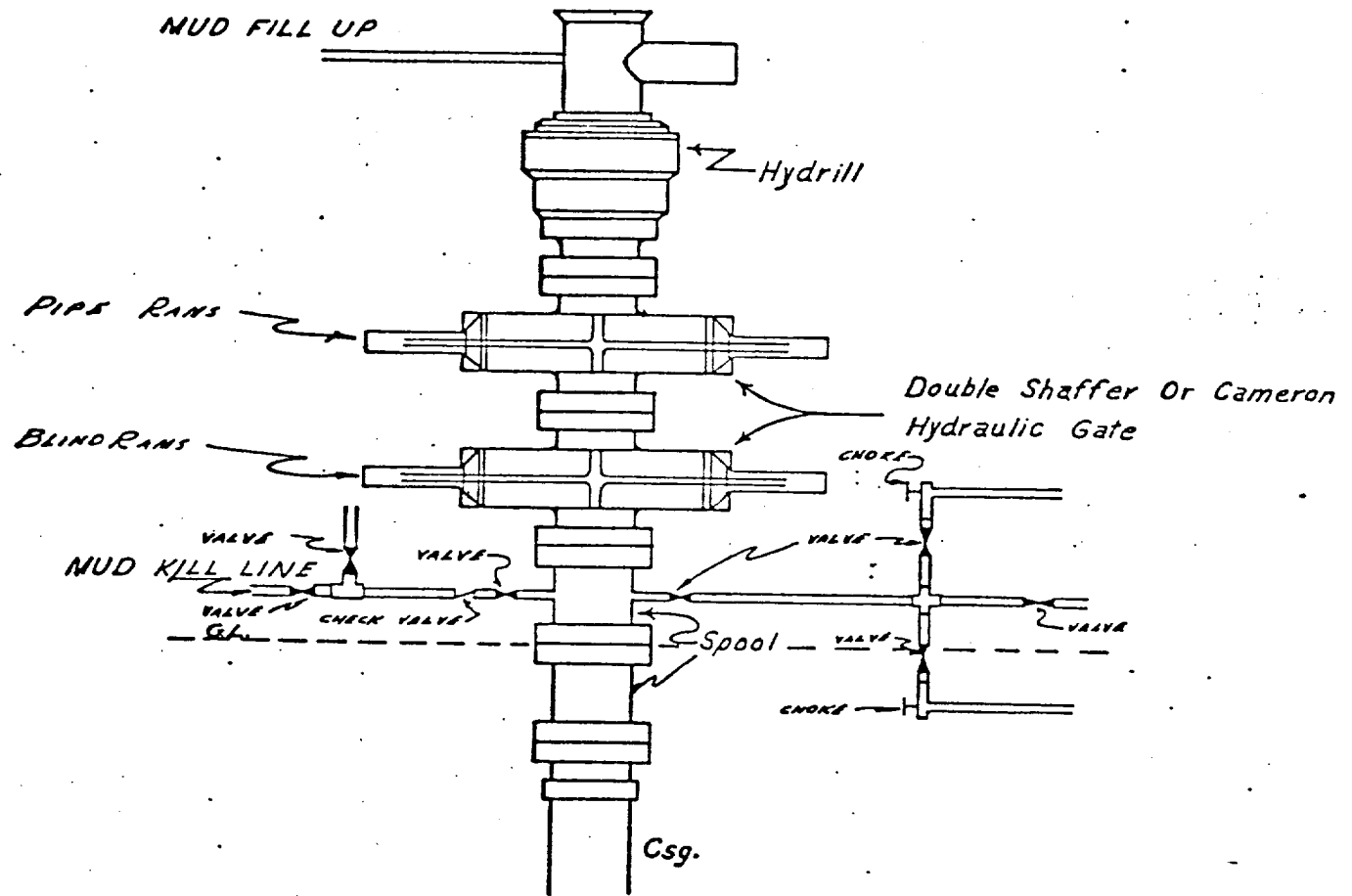
Continental Oil Company, Jicarilla 30 No. 8
660' FSL and 800' FWL of Section 32, T-25N, R-4W
Rio Arriba County, New Mexico

1. The geologic name of the surface formation is Cretaceous Sand.
2. The estimated tops of important geologic markers are shown on the attached Proposed Well Plan.
3. The estimated depths at which anticipated water, oil, gas or other mineral-bearing formations to be encountered are shown on attached Proposed Well Plan.
4. The proposed casing program is as follows:

Surface - new 8 5/8" 24# K-55 set at 1000'
Production - new 5 1/2" 15.5# and 17# K-55 set at 7500'
5. A drawing of an API Series 900 Blowout Preventer Specification is attached. Pipe rams and blinds will be checked to 1,000 PSI for 30 minutes when BOP is installed. BOP will be checked when casing string is set and operated daily for checks.
6. The proposed mud program is as follows:

0-1000' Fresh Water Gel	8.5-9.0 pounds per gallon
1000-7500' KCL Poly Gel	8.5-9.0 pounds per gallon
7. The auxiliary equipment to be used is:
 - (1) Kelly cocks
 - (2) Floats at the bit
8. It is proposed to run SP-IES log from TD to 2800' and GR CAL CNL FDC PDC logs at selected intervals.
9. No abnormal pressures or temperatures are expected to be encountered in this well.
10. The anticipated starting date for this well is March 20, 1978, with a duration date of approximately 21 days.

CONTINENTAL OIL COMPANY
Blow-out Preventer Specifications



API Series 900

NOTE:

Manual and Hydraulic controls with closing unit no less than 75' from well head.
Remote controls on rig floor.

DUE TO SUBSTRUCTURE CLEARANCE,
HYDRILL MAY OR MAY NOT BE USED.

Jicar. 1/2 30 # 8