

UNITED STATES
DEPARTMENT OF THE INTERIOR
GEOLOGICAL SURVEY

APPLICATION FOR PERMIT TO DRILL, DEEPEN, OR PLUG BACK

1a. TYPE OF WORK

DRILL ☒DEEPEN ☐PLUG BACK ☐

b. TYPE OF WELL

OIL
WELL ☐GAS
WELL ☒

OTHER

SINGLE
ZONE ☐MULTIPLE
ZONE ☐

2. NAME OF OPERATOR

PETRO-LEWIS CORPORATION

3. ADDRESS OF OPERATOR

P. O. BOX 509, LEVELLAND, TEXAS 79336

4. LOCATION OF WELL (Report location clearly and in accordance with any State requirements.*)

At surface

2105 FNL & 900' FEL

At proposed prod. zone

7140'

14. DISTANCE IN MILES AND DIRECTION FROM NEAREST TOWN OR POST OFFICE*

19 MILES NW OF LINDRITH, NEW MEXICO

15. DISTANCE FROM PROPOSED*

LOCATION TO NEAREST
PROPERTY OR LEASE LINE, FT.
(Also to nearest drlg. unit line, if any)

2105'

16. NO. OF ACRES IN LEASE

981.39

17. NO. OF ACRES ASSIGNED
TO THIS WELL

160 196.79

18. DISTANCE FROM PROPOSED LOCATION*
TO NEAREST WELL, DRILLING, COMPLETED,
OR APPLIED FOR, ON THIS LEASE, FT.

1065'

19. PROPOSED DEPTH

7890'

20. ROTARY OR CABLE TOOLS

ROTARY

21. ELEVATIONS (Show whether DF, RT, GR, etc.)

7387' GR

22. APPROX. DATE WORK WILL START*

3/20/78

23.

PROPOSED CASING AND CEMENTING PROGRAM

SIZE OF HOLE	SIZE OF CASING	WEIGHT PER FOOT	SETTING DEPTH	QUANTITY OF CEMENT
12-1/4"	8-5/8"	24#	500'	300 sx. to surface
7-7/8"	5-1/2"	15.5# & 17#	7890'	1200 sx. to 2000'

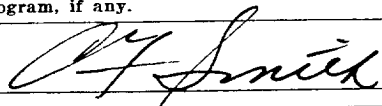
2/1/78 - PETRO-LEWIS CORPORATION PROPOSES THE FOLLOWING:

1. Drill 12-1/4" hole to 500' and run 8-5/8" OD, casing, 24#, K-55, ST&C, and cement w/300 sx. Class "A", 3% CACL₂, 4% gel, 1/4# per sx Flocele.
2. Drill 7-7/8" hole to 7890' and run GR-CNL - FOC-DIL, log and run 5-1/2" OD, casing, 15.5# and 17#, K-55, ST&C, and cement w/1200 sx. Class "A", 3% CACL₂ w/1/4# per sx. Flocele.
 - A. DV Tool @ 4500'.
 - B. Two stage cement, circulate cement 1st. stage.
 - C. TOC est. 2000' 2nd. stage.
3. Run temperature survey, locate TOC-2000' est.
4. Run CBL-VDL-2000' to TD, cement bonding log w/GR-collar for perf
5. Prep to complete Gallup.
6. Rig has 10" 900 series Double Shaffer Hydraulic BOP.

IN ABOVE SPACE DESCRIBE PROPOSED PROGRAM: If proposal is to deepen or plug back, give data on present productive zone and proposed new productive zone. If proposal is to drill or deepen directionally, give pertinent data on subsurface locations and measured and true vertical depths. Give blowout preventer program, if any.

24.

SIGNED



TITLE SUPT./LEVELLAND DISTRICT DATE 4/21/78

(This space for Federal or State office use)

PERMIT NO.

APPROVAL DATE

APPROVED BY

TITLE

DATE

CONDITIONS OF APPROVAL, IF ANY:

*See Instructions On Reverse Side

UNITED STATES
DEPARTMENT OF THE INTERIOR
GEOLOGICAL SURVEY

APPLICATION FOR PERMIT TO DRILL, DEEPEN, OR PLUG BACK

1a. TYPE OF WORK

DRILL ☒DEEPEN ☐PLUG BACK ☐

b. TYPE OF WELL

OIL
WELL ☐GAS
WELL ☒

OTHER

SINGLE
ZONE ☒MULTIPLE
ZONE ☐

2. NAME OF OPERATOR

Petro-Lewis Corporation

3. ADDRESS OF OPERATOR

P.O. Box 509, Levelland, Texas 79336

4. LOCATION OF WELL (Report location clearly and in accordance with any State requirements.)*

At surface

2105 FNL & 900' FEL

At proposed prod. zone 7140'

14. DISTANCE IN MILES AND DIRECTION FROM NEAREST TOWN OR POST OFFICE*

19 miles northwest of Lindrith, New Mexico

15. DISTANCE FROM PROPOSED*

LOCATION TO NEAREST

PROPERTY OR LEASE LINE, FT.

(Also to nearest drlg. unit line, if any)

2105'

16. NO. OF ACRES IN LEASE

981.39

18. DISTANCE FROM PROPOSED LOCATION*

TO NEAREST WELL, DRILLING, COMPLETED,
OR APPLIED FOR, ON THIS LEASE, FT.

1065'

19. PROPOSED DEPTH

7890'

17. NO. OF ACRES ASSIGNED
TO THIS WELL

160 196.79-

20. ROTARY OR CABLE TOOLS

Rotary

21. ELEVATIONS (Show whether DF, RT, GR, etc.)

7387' GR

22. APPROX. DATE WORK WILL START*

3-20-78

23.

PROPOSED CASING AND CEMENTING PROGRAM

SIZE OF HOLE	SIZE OF CASING	WEIGHT PER FOOT	SETTING DEPTH	QUANTITY OF CEMENT
12-1/4"	8-5/8"	24#	500'	300 sx. to surface
7-7/8"	5-1/2"	15.5# & 17#	7890'	1200 sx. to 2000'

2/1/78 - Petro-Lewis Corporation proposes the following:

1. Drill 12-1/4" hole to 500' and run 8-5/8" OD, casing, 24#, K-55, ST&C and cement w/300 sx. Class "A", 3% CACL₂, 4% gel, 1/4# per sx. Flocele.
2. Drill 7-7/8" hole to 7890' and run GR-CNL - FOC-DIL, log and run 5-1/2" OD, casing, 15.5# and 17#, K-55, ST&C, and cement w/1200 sx. Class "A", 3% CACL₂ w/1/4# per sx. Flocele.
 - A. DV tool @ 4500'
 - B. Two stage cement, circulate cement 1st stage
 - C. TOC est. 2000' 2nd stage.
3. Run temperature survey, locate TOC-2000' est.
4. Run CBL-VDL-2000' to TD, cement bonding log w/GR-dollar for COM.
5. Prep to complete Gallup.
6. Rig has 10" 900 series Double Shaffer Hydraulic BOP.

Gas not dedicated

IN ABOVE SPACE DESCRIBE PROPOSED PROGRAM: If proposal is to deepen or plug back, give data on present productive zone and proposed new productive zone. If proposal is to drill or deepen directionally, give pertinent data on subsurface locations and measured and true vertical depths. Give blowout preventer program, if any.

24.

SIGNED

TITLE Sr. Drilling Foreman

DATE February 1, 1978

(This space for Federal or State office use)

PERMIT NO.

APPROVAL DATE

APPROVED BY

CONDITIONS OF APPROVAL, IF ANY:

TITLE

DATE

RECEIVED
FEB 7 1978
OIL CON. COM.
DIST. 3

DATE MAILED MAR 23 1978

*See Instructions On Reverse Side

FEB 8 1978

NEW MEXICO OIL CONSERVATION COMMISSION
WELL LOCATION AND ACREAGE DEDICATION PLAT

Form C-102
Supersedes C.
Effective 1-1-

All distances must be from the outer boundaries of the Section.

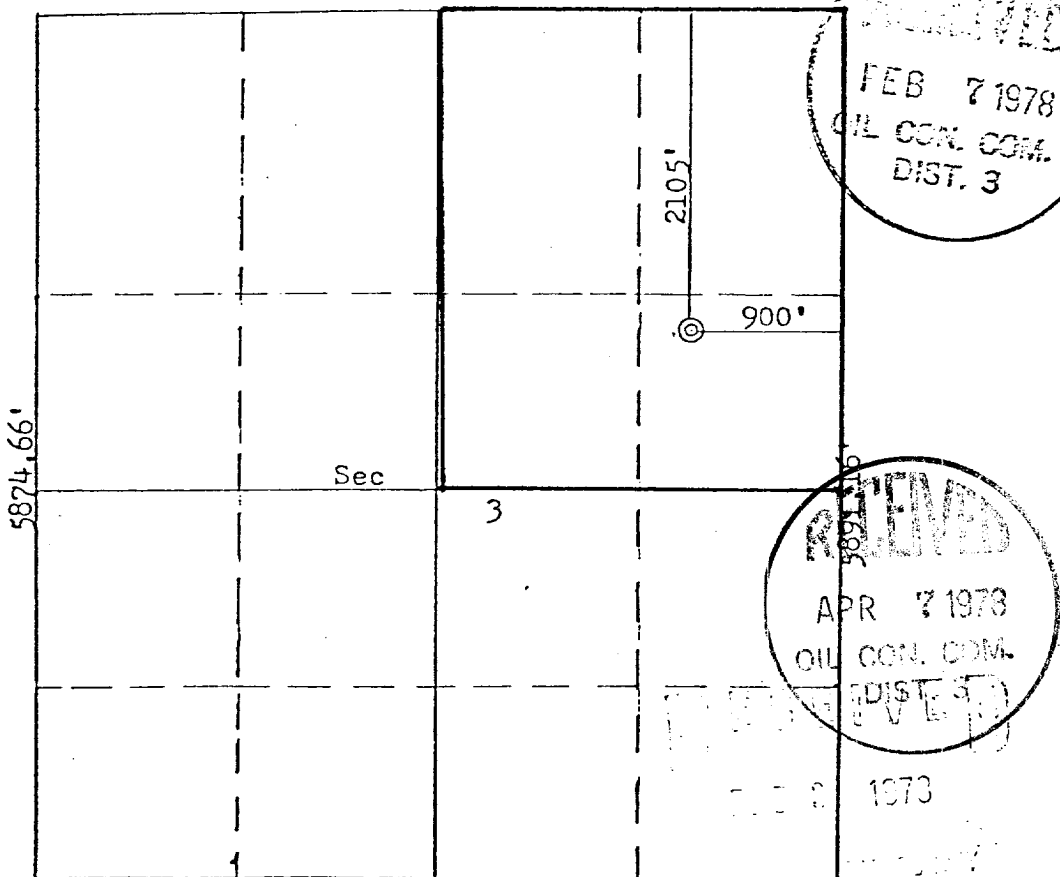
Operator Petro-Lewis Corporation			Lease Ruddock		Well No. 8
Unit Letter H	Section 3	Township 25N	Range 3W	County Rio Arriba	
Actual Footage Location of Well:					
2105	feet from the	North	line and	900	feet from the East line
Ground Level Elev: 7387	Producing Formation GALLUP		Pool Wildcat BASIN		Dedicated Acreage: 1604-196.79 Acs.

1. Outline the acreage dedicated to the subject well by colored pencil or hatchure marks on the plat below.
2. If more than one lease is dedicated to the well, outline each and identify the ownership thereof (both as to working interest and royalty).
3. If more than one lease of different ownership is dedicated to the well, have the interests of all owners been consolidated by communitization, unitization, force-pooling, etc?

☐ Yes ☐ No If answer is "yes," type of consolidation _____

If answer is "no," list the owners and tract descriptions which have actually been consolidated. (Use reverse side of this form if necessary.) _____

No allowable will be assigned to the well until all interests have been consolidated (by communitization, unitization, forced-pooling, or otherwise) or until a non-standard unit, eliminating such interests, has been approved by the Commission.



CERTIFICATION

I hereby certify that the information contained herein is true and complete to the best of my knowledge and belief.

Bruce J. Dilling
Name
Sy. Dilling Foreman
Position
Petro-Lewis Corporation
Company
2-1-78
Date

I hereby certify that the well location shown on this plat was plotted from field notes of actual surveys made by me or under my supervision, and that the same is true and correct to the best of my knowledge and belief.

Date Surveyed
October 13, 1977
Registered Professional Engineer,
and Land Surveyor
Fred E. Kerr Jr.
Fred E. Kerr Jr.
Certificate No.

SCALE: 1" = 1320'