

UNITED STATES
DEPARTMENT OF THE INTERIOR
GEOLOGICAL SURVEY

APPLICATION FOR PERMIT TO DRILL, DEEPEN, OR PLUG BACK

1a. TYPE OF WORK

DRILL ☒DEEPEN ☐PLUG BACK ☐

b. TYPE OF WELL

OIL
WELL ☐GAS
WELL ☒

OTHER

SINGLE
ZONE ☒MULTIPLE
ZONE ☐

2. NAME OF OPERATOR

PETRO-LEWIS CORPORATION

3. ADDRESS OF OPERATOR

P. O. BOX 509, LEVELLAND, TEXAS 79336

4. LOCATION OF WELL (Report location clearly and in accordance with any State requirements.*)

At surface

2160' FNL & 1040' FWL

At proposed prod. zone

7000'

14. DISTANCE IN MILES AND DIRECTION FROM NEAREST TOWN OR POST OFFICE*

20.5 MILES NW LINDRITH, N.M.

15. DISTANCE FROM PROPOSED*

LOCATION TO NEAREST
PROPERTY OR LEASE LINE, FT.
(Also to nearest drlg. unit line, if any)

2160'

16. NO. OF ACRES IN LEASE

981.39

17. NO. OF ACRES ASSIGNED
TO THIS WELL

18. DISTANCE FROM PROPOSED LOCATION*

TO NEAREST WELL, DRILLING, COMPLETED,
OR APPLIED FOR, ON THIS LEASE, FT.

1170'

19. PROPOSED DEPTH

7750'

20. ROTARY OR CABLE TOOLS

ROTARY

21. ELEVATIONS (Show whether DF, RT, GR, etc.)

7332' GR

22. APPROX. DATE WORK WILL START*

3/30/78

23.

PROPOSED CASING AND CEMENTING PROGRAM

| SIZE OF HOLE | SIZE OF CASING | WEIGHT PER FOOT | SETTING DEPTH | QUANTITY OF CEMENT |
|--------------|----------------|-----------------|---------------|--------------------|
| 12-1/4" | 8-5/8" | 24# | 500' | 300 sx to surface |
| 7-7/8" | 5-1/2" | 15.5# & 17# | 7750' | 1150 sx to 2000' |

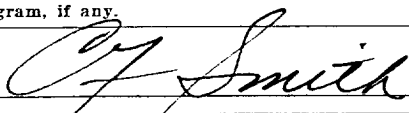
1-31-78 - Petro-Lewis Corporation proposes the following:

1. Drill 12-1/4" hole to 500' and run 8-5/8" OD, casing, 24#, K-55 ST&C, cement w/300 sx Class A, 3% CACL₂, 4% gel, 1/4# sx. Flocele
2. Drill 7-7/8" hole to 7750'. Run GR-CNL-FDC-DIL, Log. Run 5-1/2" OD casing, 15.5# & 17#, K-55, ST&C. Cement w/1150 sx Class A 3% CACL₂ w/1/4# sx Flocele.
3. Run temperature survey; locate TOC-2000' est.
4. Run CBL-VDL-2000' to TD. Cement bonding log w/GR-collar locator for perf.
5. Prep to complete Gallup.
6. Rig has 10" 900 Series Double Shaffer Hydraulic BOP.

IN ABOVE SPACE DESCRIBE PROPOSED PROGRAM: If proposal is to deepen or plug back, give data on present productive zone and proposed new productive zone. If proposal is to drill or deepen directionally, give pertinent data on subsurface locations and measured and true vertical depths. Give blowout preventer program, if any.

24.

SIGNED



TITLE

Supt./Levelland District

DATE

4/21/78

(This space for Federal or State office use)

PERMIT NO.

APPROVAL DATE

APPROVED BY

TITLE

DATE

CONDITIONS OF APPROVAL, IF ANY:

*See Instructions On Reverse Side

UNITED STATES
DEPARTMENT OF THE INTERIOR
GEOLOGICAL SURVEY

APPLICATION FOR PERMIT TO DRILL, DEEPEN, OR PLUG BACK

1a. TYPE OF WORK

DRILL ☒DEEPEN ☐PLUG BACK ☐

b. TYPE OF WELL

OIL
WELL ☐GAS
WELL ☒OTHER ☐SINGLE
ZONE ☒MULTIPLE
ZONE ☐

2. NAME OF OPERATOR

Petro-Lewis Corporation

3. ADDRESS OF OPERATOR

P.O. Box 509, Levelland, Texas 79336

4. LOCATION OF WELL (Report location clearly and in accordance with any State requirements.)*

At surface 2160' FNL & 1040' FWL

At proposed prod. zone 7000'

14. DISTANCE IN MILES AND DIRECTION FROM NEAREST TOWN OR POST OFFICE*

20.5 miles northwest of Lindrieth, New Mexico

15. DISTANCE FROM PROPOSED*

LOCATION TO NEAREST

PROPERTY OR LEASE LINE, FT.

(Also to nearest drlg. unit line, if any) 2160'

18. DISTANCE FROM PROPOSED LOCATION*

TO NEAREST WELL, DRILLING, COMPLETED,
OR APPLIED FOR, ON THIS LEASE, FT.

1170'

16. NO. OF ACRES IN LEASE

981.39

19. PROPOSED DEPTH

7750'

17. NO. OF ACRES ASSIGNED
TO THIS WELL

20. ROTARY OR CABLE TOOLS

Rotary

21. ELEVATIONS (Show whether DF, RT, GR, etc.)

7332' GR

22. APPROX. DATE WORK WILL START*

3-30-78

23.

PROPOSED CASING AND CEMENTING PROGRAM

| SIZE OF HOLE | SIZE OF CASING | WEIGHT PER FOOT | SETTING DEPTH | QUANTITY OF CEMENT |
|--------------|----------------|-----------------|---------------|--------------------|
| 12-1/4" | 8-5/8" | 24# | 500' | 300 sx. to surface |
| 7-7/8" | 5-1/2" | 15.5# & 17# | 7750' | 1150 sx. to 2000' |

1-31-78 - Petro-Lewis Corporation proposes the following:

1. Drill 12-1/4" hole to 500' and run 8-5/8" OD, casing, 24#, K-55, ST&C, and cement w/300 sx. Class "A", 3% CACL₂, 4% gel, 1/4# sx. Flocele.
2. Drill 7-7/8" hole to 7750' and run GR-CNL-FDC-DIL, Log and run 5-1/2" OD casing, 15.5# & 17#, K-55, ST&C, and cement w/1150 sx. Class "A", 3% CACL₂, w/1/4# sx. Flocele.
 - A. DV-Tool @ 4500'
 - B. Two stage cement, circulate cement 1st stage.
 - C. TOC - est. 2000' 2nd stage.
3. Run temperature survey, locate TOC-2000' est.
4. Run CBL-VDL-2000' to TD. Cement bonding log w/GR-collar locator for perf.
5. Prep to complete Gallup.
6. Rig has 10" 900 Series Double Shaffer Hydraulic BOP.

Gas not dedicated
IN ABOVE SPACE DESCRIBE PROPOSED PROGRAM: If proposal is to deepen or plug back, give data on present productive zone and proposed new productive zone. If proposal is to drill or deepen directionally, give pertinent data on subsurface locations and measured and true vertical depths. Give blowout preventer program, if any.

24.

SIGNED

Ron Jolley

TITLE

Sr. Drilling Foreman

DATE

1-31-78

(This space for Federal or State office use)

PERMIT NO.

APPROVAL DATE

APPROVED BY

TITLE

CONDITIONS OF APPROVAL, IF ANY:

DATE MAILED MAR 23 1978

*See Instructions On Reverse Side

| | |
|--|-------------------|
| 5. LEASE DESIGNATION AND SERIAL NO. NM-080566 | |
| 6. IF INDIAN, ALLOTTEE OR TRIBE NAME Federal | |
| 7. UNIT AGREEMENT NAME | |
| 8. FARM OR LEASE NAME Florance | |
| 9. WELL NO. 687 | |
| 10. FIELD AND TOOL, OR WILDCAT Wildcat Gallup | |
| 11. SEC., T., R., M., OR BLK. AND SURVEY OR AREA Sec. 4, T25N, R3W | |
| 12. COUNTY OR PARISH | 13. STATE N.M. |

| | |
|--|---|
| 14. DISTANCE IN MILES AND DIRECTION FROM NEAREST TOWN OR POST OFFICE* | 20.5 miles northwest of Lindrieth, New Mexico |
| 15. DISTANCE FROM PROPOSED* LOCATION TO NEAREST PROPERTY OR LEASE LINE, FT. (Also to nearest drlg. unit line, if any) | 2160' |
| 18. DISTANCE FROM PROPOSED LOCATION* TO NEAREST WELL, DRILLING, COMPLETED, OR APPLIED FOR, ON THIS LEASE, FT. | 1170' |
| 16. NO. OF ACRES IN LEASE | 981.39 |
| 19. PROPOSED DEPTH | 7750' |
| 17. NO. OF ACRES ASSIGNED TO THIS WELL | 195.65 |
| 20. ROTARY OR CABLE TOOLS | Rotary |
| 21. ELEVATIONS (Show whether DF, RT, GR, etc.) | 7332' GR |
| 22. APPROX. DATE WORK WILL START* | 3-30-78 |

| | |
|---|----------------|
| 23. PROPOSED CASING AND CEMENTING PROGRAM | |
| SIZE OF HOLE | SIZE OF CASING |
| 12-1/4" | 8-5/8" |
| 7-7/8" | 5-1/2" |
| WEIGHT PER FOOT | SETTING DEPTH |
| 24# | 500' |
| 15.5# & 17# | 7750' |
| QUANTITY OF CEMENT | |
| 300 sx. to surface | |
| 1150 sx. to 2000' | |

| | |
|--|--|
| 1-31-78 - Petro-Lewis Corporation proposes the following: | |
| 1. Drill 12-1/4" hole to 500' and run 8-5/8" OD, casing, 24#, K-55, ST&C, and cement w/300 sx. Class "A", 3% CACL ₂ , 4% gel, 1/4# sx. Flocele. | |
| 2. Drill 7-7/8" hole to 7750' and run GR-CNL-FDC-DIL, Log and run 5-1/2" OD casing, 15.5# & 17#, K-55, ST&C, and cement w/1150 sx. Class "A", 3% CACL ₂ , w/1/4# sx. Flocele. | |
| A. DV-Tool @ 4500' | |
| B. Two stage cement, circulate cement 1st stage. | |
| C. TOC - est. 2000' 2nd stage. | |
| 3. Run temperature survey, locate TOC-2000' est. | |
| 4. Run CBL-VDL-2000' to TD. Cement bonding log w/GR-collar locator for perf. | |
| 5. Prep to complete Gallup. | |
| 6. Rig has 10" 900 Series Double Shaffer Hydraulic BOP. | |

| | |
|------------------------|--|
| FEB 3 1978 | |
| U.S. GEOLOGICAL SURVEY | |
| LUNGO, COLO. | |
| DATE 1-31-78 | |

| | |
|---------------|--|
| RECEIVED | |
| FEB 7 1978 | |
| OIL CON. COM. | |
| DIST. 3 | |

NEW MEXICO OIL CONSERVATION COMMISSION
WELL LOCATION AND ACREAGE DEDICATION PLAT

Form C-10
Supersedes
Effective:

All distances must be from the outer boundaries of the Section.

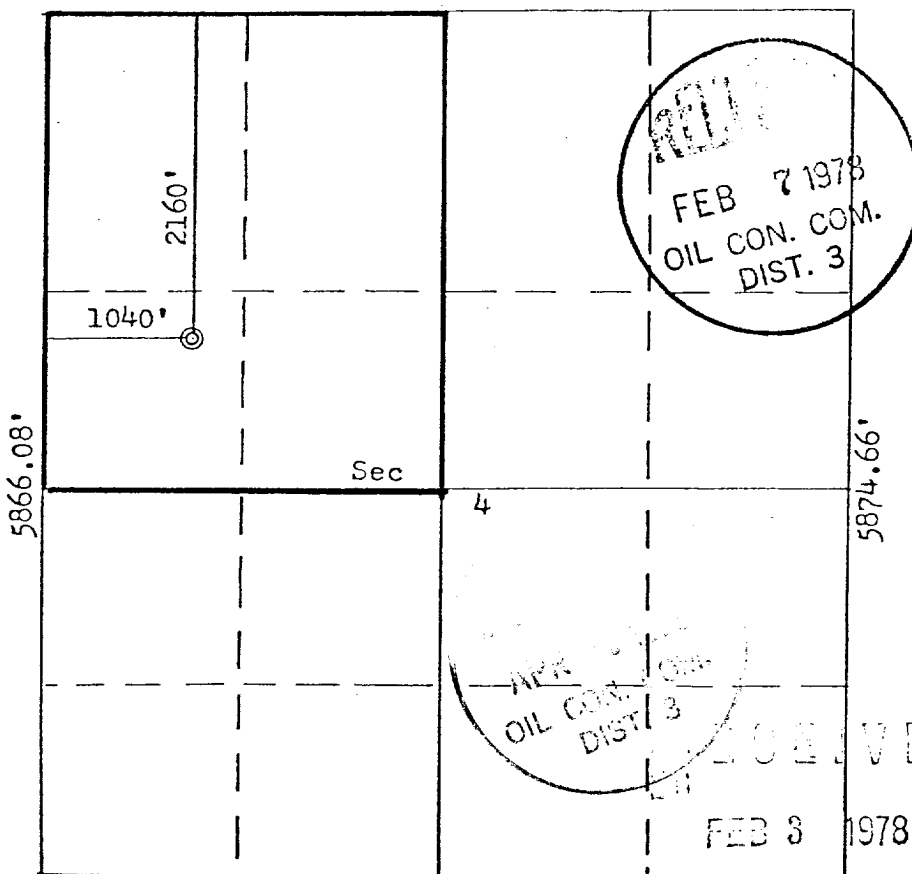
| | | | | | |
|-------------------------------------|-------------------------------|-----------------|-----------------------|---|----------------------------|
| Operator Petro-Lewis Corporation | | | Lease Florence | | Well No. 6 7 |
| Unit Letter E | Section 4 | Township 25N | Range 3W | County Rio Arriba | |
| Actual Footage Location of Well: | | | | | |
| 2160 | feet from the | North | line and | 1040 | feet from the West line |
| Ground Level Elev: 7332 | Producing Formation GALLUP | | Pool Mildred BASIN | Dedicated Acreage: 1.00 1.65 Ac | |

1. Outline the acreage dedicated to the subject well by colored pencil or hatchure marks on the plat below. 1.65
2. If more than one lease is dedicated to the well, outline each and identify the ownership thereof (both as to work interest and royalty).
3. If more than one lease of different ownership is dedicated to the well, have the interests of all owners been consolidated by communitization, unitization, force-pooling, etc?

☐ Yes ☐ No If answer is "yes," type of consolidation _____

If answer is "no," list the owners and tract descriptions which have actually been consolidated. (Use reverse side of this form if necessary.) _____

No allowable will be assigned to the well until all interests have been consolidated (by communitization, unitization, forced-pooling, or otherwise) or until a non-standard unit, eliminating such interests, has been approved by the Commission.



CERTIFICATION

I hereby certify that the information contained herein is true and complete to the best of my knowledge and belief.

Name Don Impley
Position Petro-Lewis Corporation
Company Production Engineer
Date 2-1-78

I hereby certify that the well location shown on this plat was plotted from field notes of actual surveys made by me under my supervision, and that the same is true and correct to the best of my knowledge and belief.

Date Surveyed October 13, 1977
Registered Professional Engineer and Land Surveyor
Fred B. Kerr Jr.
Certificate No. 11111

U. S. GEOLOGICAL SURVEY
DIST. 3, 3016.