

UNITED STATES
DEPARTMENT OF THE INTERIOR
GEOLOGICAL SURVEY

APPLICATION FOR PERMIT TO DRILL, DEEPEN, OR PLUG BACK

1a. TYPE OF WORK DRILL ☒ DEEPEN ☐ PLUG BACK ☐

b. TYPE OF WELL
OIL WELL ☒ GAS WELL ☐ OTHER Wildcat SINGLE ZONE ☐ MULTIPLE ZONE ☐

2. NAME OF OPERATOR
TransOcean Oil, Inc.

3. ADDRESS OF OPERATOR
First City East Bldg., 1111 Fannin, Houston, Tx. 77002

4. LOCATION OF WELL (Report location clearly and in accordance with any State requirements.*)
At surface 1740' FSL & 850' FEL of Section 31, T24N-R3W

I At proposed prod. zone
Vertical

14. DISTANCE IN MILES AND DIRECTION FROM NEAREST TOWN OR POST OFFICE*
11 miles SW of Lindrith, New Mexico

15. DISTANCE FROM PROPOSED*
LOCATION TO NEAREST 1740' FSL & 850' FEL
PROPERTY OR LEASE LINE, FT. (Also to nearest drlg. unit line, if any) Sec 31, T24N-R3W

18. DISTANCE FROM PROPOSED LOCATION*
TO NEAREST WELL, DRILLING, COMPLETED,
OR APPLIED FOR, ON THIS LEASE, FT. N/A

21. ELEVATIONS (Show whether DF, RT, GR, etc.)
7346 GL

23. PROPOSED CASING AND CEMENTING PROGRAM

SIZE OF HOLE	SIZE OF CASING	WEIGHT PER FOOT	SETTING DEPTH	QUANTITY OF CEMENT
12 1/4"	9 5/8"	36#	400'	200 sx Cl "H" + additives
7 7/8"	5 1/2"	15.5#	3000-9000'	To be determined after
7 7/8"	5 1/2"	17#	0-3000'	evaluation of caliper log.

5. LEASE DESIGNATION AND SERIAL NO.
NM 28714
6. IF INDIAN, ALLOTTEE OR TRIBE NAME

7. UNIT AGREEMENT NAME
N/A
8. FARM OR LEASE NAME
Federal
9. WELL NO.
2
10. FIELD AND POOL, OR WILDCAT
Chacon-Dakota
11. SEC., T., R., M., OR BLK.
AND SURVEY OR AREA
Sec. 31, T24N-R3W
12. COUNTY OR PARISH
Rio Arriba
13. STATE
New Mexico

17. NO. OF ACRES ASSIGNED
TO THIS WELL 160

20. ROTARY OR CABLE TOOLS
Rotary

22. APPROX. DATE WORK WILL START*
1 September 1978

IN ABOVE SPACE DESCRIBE PROPOSED PROGRAM: If proposal is to deepen or plug back, give data on present productive zone and proposed new productive zone. If proposal is to drill or deepen directionally, give pertinent data on subsurface locations and measured and true vertical depths. Give blowout preventer program, if any.

24. SIGNED [Signature] TITLE Sr. Drilling Engineer
Western Division DATE July 5, 1978

(This space for Federal or State office use)

PERMIT NO. APPROVAL DATE

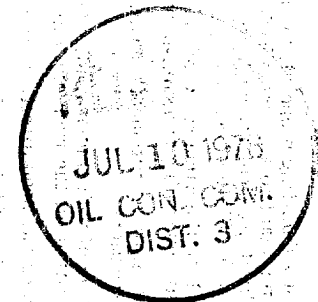
APPROVED BY TITLE DATE

CONDITIONS OF APPROVAL, IF ANY:

ok Frank

*See Instructions On Reverse Side

U. S. GEOLOGICAL SURVEY
LUTHERA, COLORADO



RECEIVED
JUL - 7 1978

**NEW MEXICO OIL CONSERVATION COMMISSION
WELL LOCATION AND ACREAGE DEDICATION PLAT**

Form C-102
Supersedes C-128
Effective 1-1-65

All distances must be from the outer boundaries of the Section.

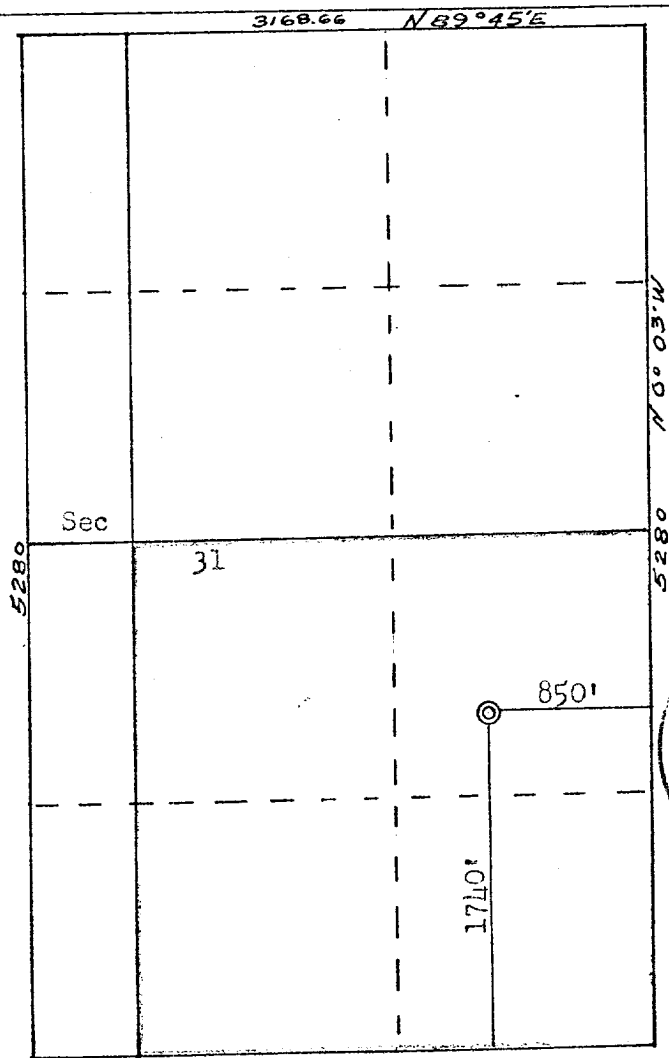
Operator TRANSOCEAN OIL, INC.			Lease Federal		Well No. No. 2
Unit Letter I	Section 31	Township 24N	Range 3W	County Rio Arriba	
Actual Footage Location of Well: 1740 feet from the South line and 850 feet from the East line					
Ground Level Elev: 7346	Producing Formation Dakota	Pool Chacon-Dakota	Dedicated Acreage: 160 Acres		

1. Outline the acreage dedicated to the subject well by colored pencil or hachure marks on the plat below.
2. If more than one lease is dedicated to the well, outline each and identify the ownership thereof (both as to working interest and royalty).
3. If more than one lease of different ownership is dedicated to the well, have the interests of all owners been consolidated by communitization, unitization, force-pooling, etc?

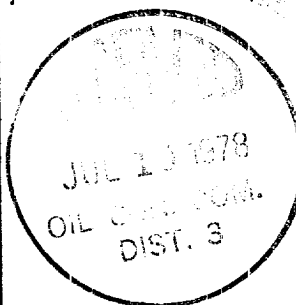
☐ Yes ☐ No If answer is "yes," type of consolidation _____

If answer is "no," list the owners and tract descriptions which have actually been consolidated. (Use reverse side of this form if necessary.) _____

No allowable will be assigned to the well until all interests have been consolidated (by communitization, unitization, forced-pooling, or otherwise) or until a non-standard unit, eliminating such interests, has been approved by the Commission.



Acreage:
385.36



CERTIFICATION

I hereby certify that the information contained herein is true and complete to the best of my knowledge and belief.

Name: **J. M. Crews**
 Position: **Sr. Drilling Engineer**
 Company: **TransOcean Oil, Inc.**

Date: **July 5, 1978**

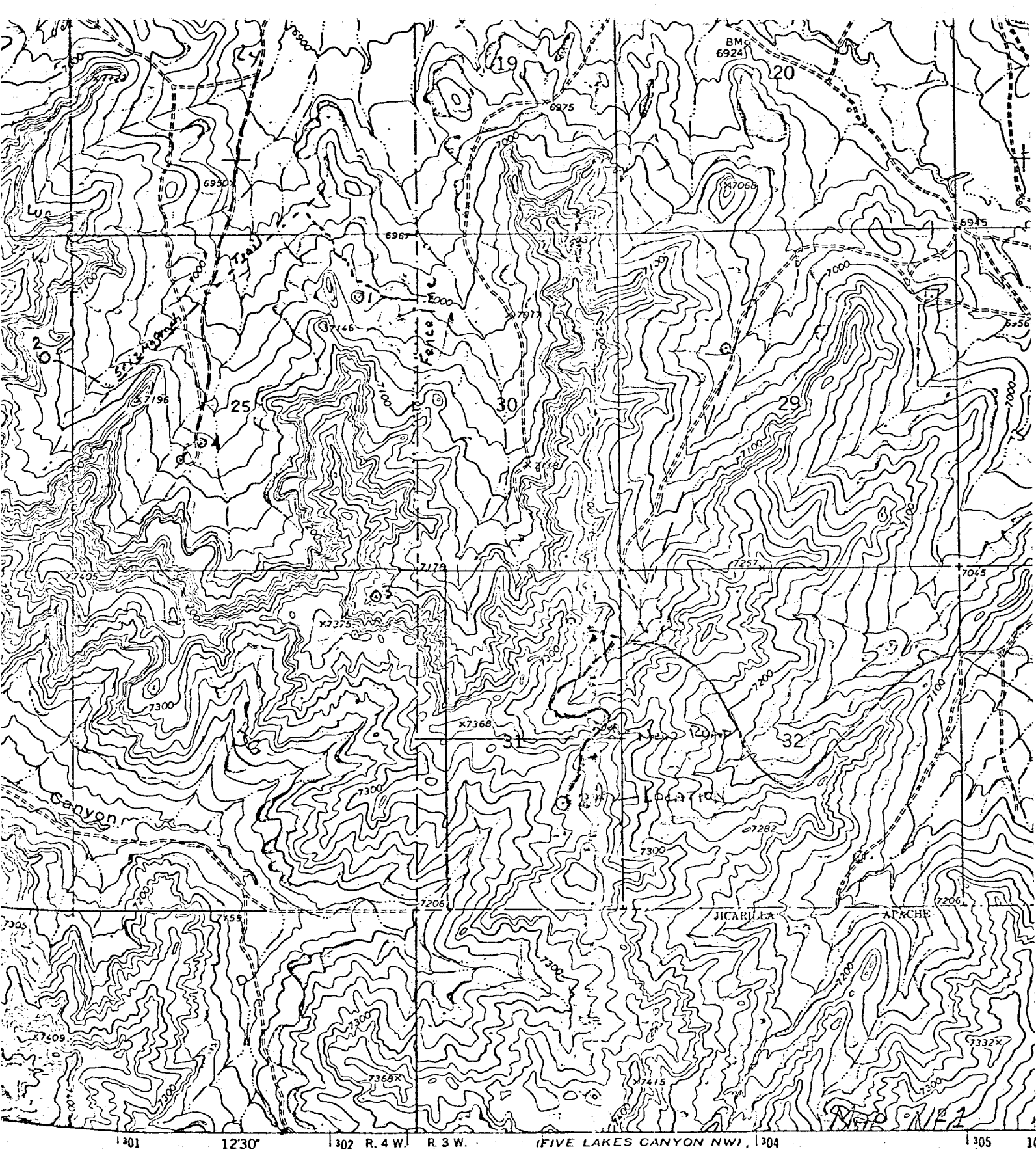
I hereby certify that the well location shown on this plat was plotted from field notes of actual surveys made by me or under my supervision, and that the same is true and correct to the best of my knowledge and belief.

Date Surveyed: **June 26, 1978**

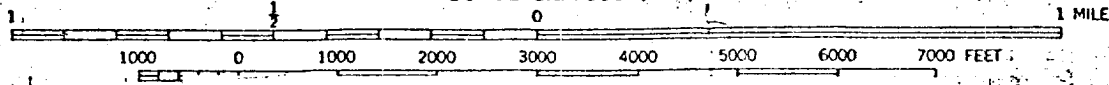
Registered Professional Engineer and Land Surveyor

Fred B. Kerr Jr.

Certificate No.
3950



SCALE 1:24 000



Vicinity Map for
TRANSOCEAN OIL, INC. #2 Federal
1740'FSL 850'FEL Sec 31-T24N-R3W
RIO ARriba COUNTY, NEW MEXICO