

UNITED STATES  
DEPARTMENT OF THE INTERIOR  
GEOLOGICAL SURVEY

## APPLICATION FOR PERMIT TO DRILL, DEEPEN, OR PLUG BACK

## 1a. TYPE OF WORK

DRILL ☒DEEPEN ☐PLUG BACK ☐

## b. TYPE OF WELL

OIL  
WELL ☐GAS  
WELL ☒

OTHER

SINGLE  
ZONE ☒MULTIPLE  
ZONE ☐

## 2. NAME OF OPERATOR

Southland Royalty Company

## 3. ADDRESS OF OPERATOR

P. O. Drawer 570, Farmington, New Mexico

## 4. LOCATION OF WELL (Report location clearly and in accordance with any State requirements.\*)

At surface

2510' FSL &amp; 1450' FWL

At proposed prod. zone

## 14. DISTANCE IN MILES AND DIRECTION FROM NEAREST TOWN OR POST OFFICE\*

43 miles south/southwest of Dulce, New Mexico

## 15. DISTANCE FROM PROPOSED\*

LOCATION TO NEAREST  
PROPERTY OR LEASE LINE, FT.  
(Also to nearest drlg. unit line, if any)

## 16. NO. OF ACRES IN LEASE

17. NO. OF ACRES ASSIGNED  
TO THIS WELL

w/ 320

18. DISTANCE FROM PROPOSED LOCATION\*  
TO NEAREST WELL, DRILLING, COMPLETED,  
OR APPLIED FOR, ON THIS LEASE, FT.

## 19. PROPOSED DEPTH

8030'

## 20. ROTARY OR CABLE TOOLS

Rotary

## 21. ELEVATIONS (Show whether DF, RT, GR, etc.)

6950' GR

## 22. APPROX. DATE WORK WILL START\*

August 1, 1978

## 23.

## PROPOSED CASING AND CEMENTING PROGRAM

SIZE OF HOLE	SIZE OF CASING	WEIGHT PER FOOT	SETTING DEPTH	QUANTITY OF CEMENT
12-1/4"	9-5/8"	32#	200'	130 cu. ft.
8-3/4"	7"	23#	3896'	468 cu. ft.
6-1/4"	4-1/2"	10.50#	3746'-7000'	666 cu. ft.
	4-1/2"	11.60#	7000'-8030'	

Surface formation is San Jose.

Top of Ojo Alamo is at 1808'.

Top of Pictured Cliffs is at 3596'.

Fresh water mud will be used to drill from surface to intermediate depth.

An air system will be used to drill from intermediate depth to total depth.

It is expected that a Gamma Ray Density and a Gamma Ray Induction log be run  
at total depth.

No abnormal pressures or poisonous gases are anticipated in this well.

It is expected that this well be drilled by December 31, 1978. This depends  
on time required for approvals, rig availability and the weather.Gas is dedicated.

IN ABOVE SPACE DESCRIBE PROPOSED PROGRAM: If proposal is to deepen or plug back, give data on present productive zone and proposed new productive zone. If proposal is to drill or deepen directionally, give pertinent data on subsurface locations and measured and true vertical depths. Give blowout preventer program, if any.

24.

SIGNED

TITLE

District Production Manager

DATE

July 3, 1978

(This space for Federal or State office use)

PERMIT NO.

APPROVAL DATE

APPROVED BY

TITLE

DATE

CONDITIONS OF APPROVAL, IF ANY:

ok Frank

\*See Instructions On Reverse Side

U. S. GEOLOGICAL SURVEY  
WASHINGTON, D. C. 20502

30-039-21833

5. LEASE DESIGNATION AND SERIAL NO.

Jicarilla 101

6. IF INDIAN, ALLOTTEE OR TRIBE NAME

7. UNIT AGREEMENT NAME

8. FARM OR LEASE NAME

Jicarilla 101

9. WELL NO.

#8

10. FIELD AND POOL, OR WILDCAT

Basin Dakota

11. SEC., T., R., M., OR BLK.  
AND SURVEY OR AREA

Section 25, T26N, R4W

12. COUNTY OR PARISH

13. STATE

Rio Arriba

New Mexico

**NEW MEXICO OIL CONSERVATION COMMISSION  
WELL LOCATION AND ACREAGE DEDICATION PLAT**

Form C-102  
Supersedes C-128  
Effective 1-1-65

All distances must be from the outer boundaries of the Section.

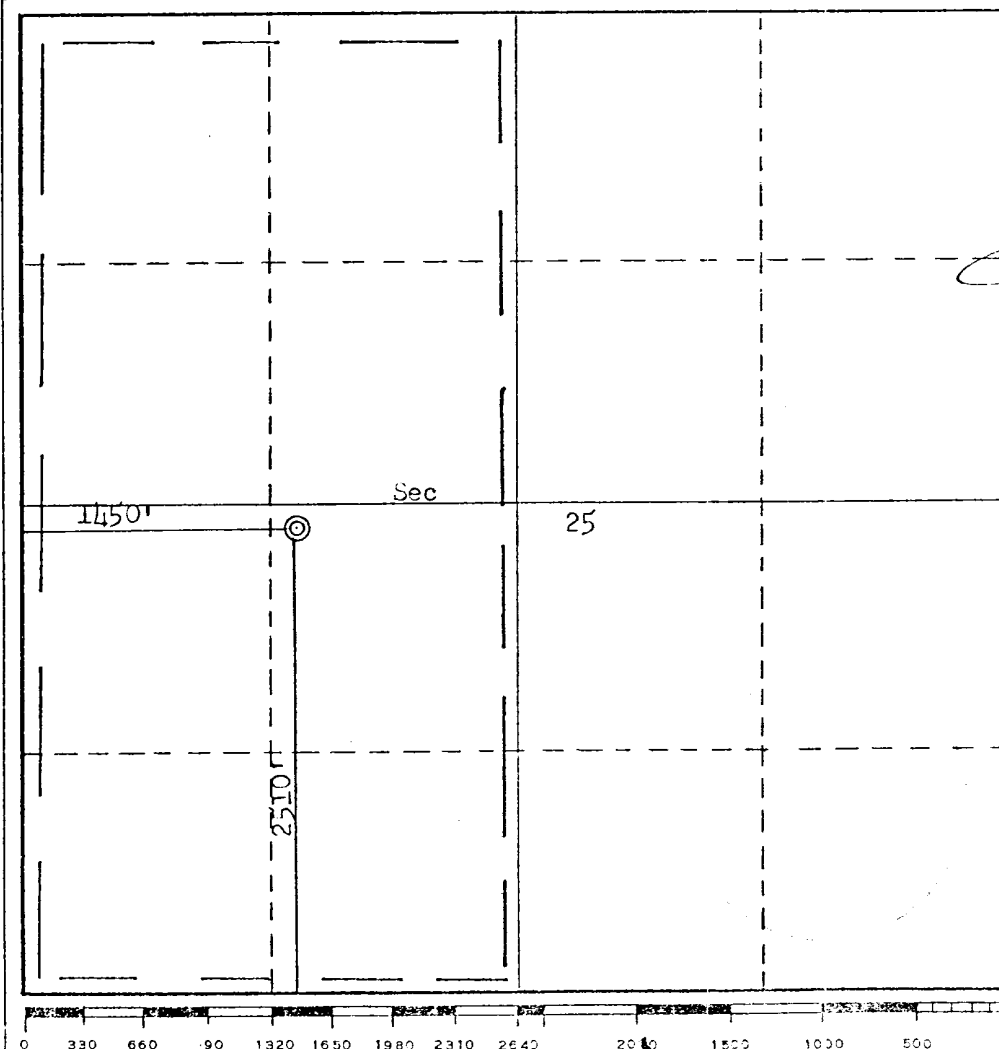
Operator <b>SOUTHLAND ROYALTY COMPANY</b>			Lease <b>JICARILLA 101</b>		Well No. <b>8</b>
Unit Letter <b>K</b>	Section <b>25</b>	Township <b>26N</b>	Range <b>4W</b>	County <b>Rio Arriba</b>	
Actual Footage Location of Well:					
<b>2510</b> feet from the <b>South</b> line and <b>1450</b> feet from the <b>West</b> line					
Ground Level Elev. <b>6950</b>	Producing Formation <b>Dakota</b>	Pool <b>Basin</b>	Dedicated Acreage: <b>320</b> Acres		

1. Outline the acreage dedicated to the subject well by colored pencil or hachure marks on the plat below.
2. If more than one lease is dedicated to the well, outline each and identify the ownership thereof (both as to working interest and royalty).
3. If more than one lease of different ownership is dedicated to the well, have the interests of all owners been consolidated by communitization, unitization, force-pooling, etc?

☐ Yes ☐ No If answer is "yes," type of consolidation \_\_\_\_\_

If answer is "no," list the owners and tract descriptions which have actually been consolidated. (Use reverse side of this form if necessary.) \_\_\_\_\_

No allowable will be assigned to the well until all interests have been consolidated (by communitization, unitization, forced-pooling, or otherwise) or until a non-standard unit, eliminating such interests, has been approved by the Commission.



**CERTIFICATION**

I hereby certify that the information contained herein is true and complete to the best of my knowledge and belief.

Name *Don Ryan*  
 Position District Production Manager  
 Company Southland Royalty Company  
 Date July 3, 1978

I hereby certify that the well location shown on this plat was plotted from field notes of actual surveys made by me or under my supervision, and that the same is true and correct to the best of my knowledge and belief.

Date Surveyed June 12, 1978  
 Registered Professional Engineer and/or Land Surveyor  
*Fred B. Kerr Jr.*  
 Fred B. Kerr Jr.

Certificate No. 3950



**Southland Royalty Company**

United States Geological Survey  
P. O. Box 1809  
Durango, Colorado

Attention: Mr. Jerry Long

Dear Sir:

I hereby certify that I, or persons under my direct supervision, have inspected the proposed drillsite and access route; that I am familiar with the conditions which presently exist; that the statements made in this plan are, to the best of my knowledge, true and correct; and, that the work associated with the operations proposed herein be performed by Southland Royalty Company and its contractors and subcontractors in conformity with this plan and the terms and conditions under which it is approved.

Date: July 3, 1978

Name: CC Passon

Title: District Engineer



**Southland Royalty Company**

July 3, 1978

United States Geological Survey  
P. O. Box 1809  
Durango, Colorado

Attention: Mr. Jerry Long

Dear Sir:

Enclosed please find map showing existing roads and planned access roads to Southland Royalty Company's Jicarilla 101 #8 well. The locations of tank batteries and flow lines will be on location with well. A burn pit will be provided for disposal of trash. Cuttings, drilling fluid and produced fluids will be put into the reserve pit and properly disposed of depending on amount and type of fluids.

Contractor will furnish restroom facilities on location.

There will be no air strips or camps.

Also, enclosed is a location layout showing approximate location of rig, pits, pipe racks and cut required to build this location.

Water supply will be water holes along Tapacitos Creek. All water will be transported by truck and stored on location.

The location will be restored according to Bureau of Land Management standards. This work will begin when all related construction is finished.

Mr. Max Larson will be Southland Royalty Company's field representative supervising these operations.

Yours truly,

L. O. Van Ryan  
District Production Manager

LOVR/dg



**Southland Royalty Company**

July 3, 1978

United States Geological Survey  
P. O. Box 1809  
Durango, Colorado

Attention: Blowout Preventer Plan

Dear Sir:

All drilling and completion rigs will be equipped with 6" or larger double gate hydraulic blowout preventers and a hydraulic operated closing unit with steel lines.

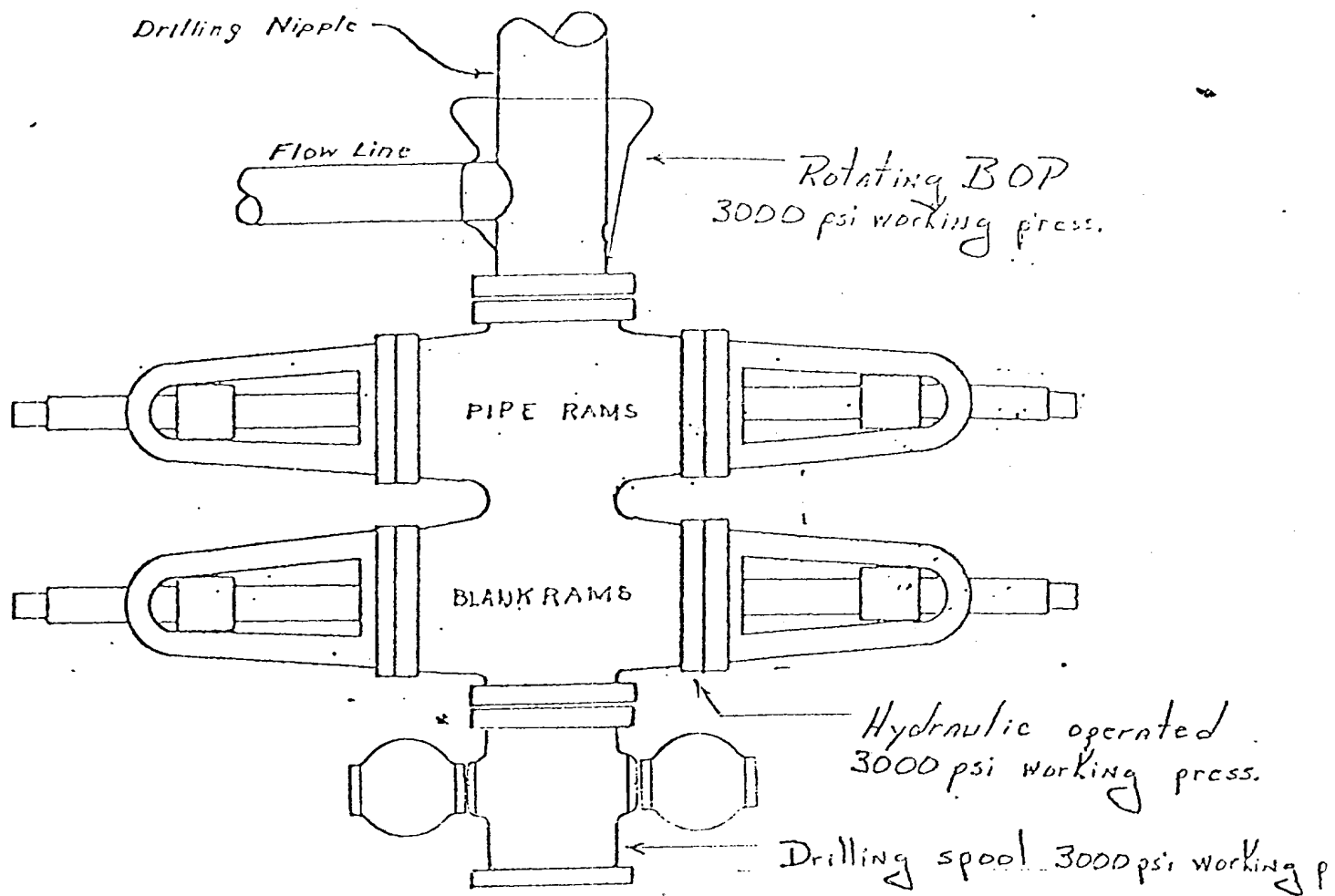
The preventer is 3000# working pressure and 6000# test.

All crews will be thoroughly trained in the operation of this preventer. The preventer will be tested frequently enough to insure proper operation.

Yours truly,

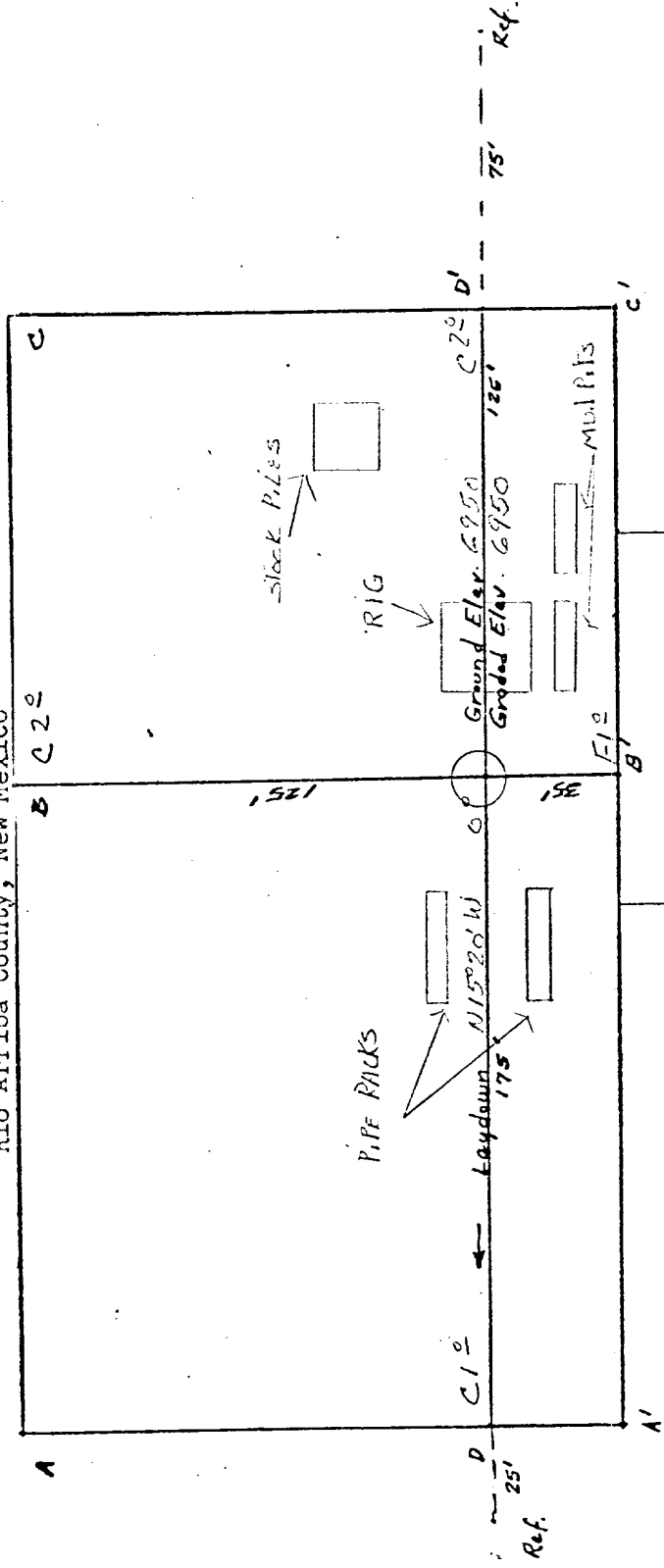
L. O. Van Ryan  
District Production Manager

LOVR/dg



Preventers and spools are to have  
through bore of 6" - 3000# PSI or larger.

Location Profile for  
SOUTHLAND ROYALTY CO. #8 JICARILLA 101  
2510' FSL 1450' FWL Sec 25-T26N-RLW  
Rio Arriba County, New Mexico



Scale: 1" = 50'

Vert. 1"=40'	A-A'	Horiz. 1"=100'

B-B'	Horiz. 1"=100'
6960	
6950	
6940	

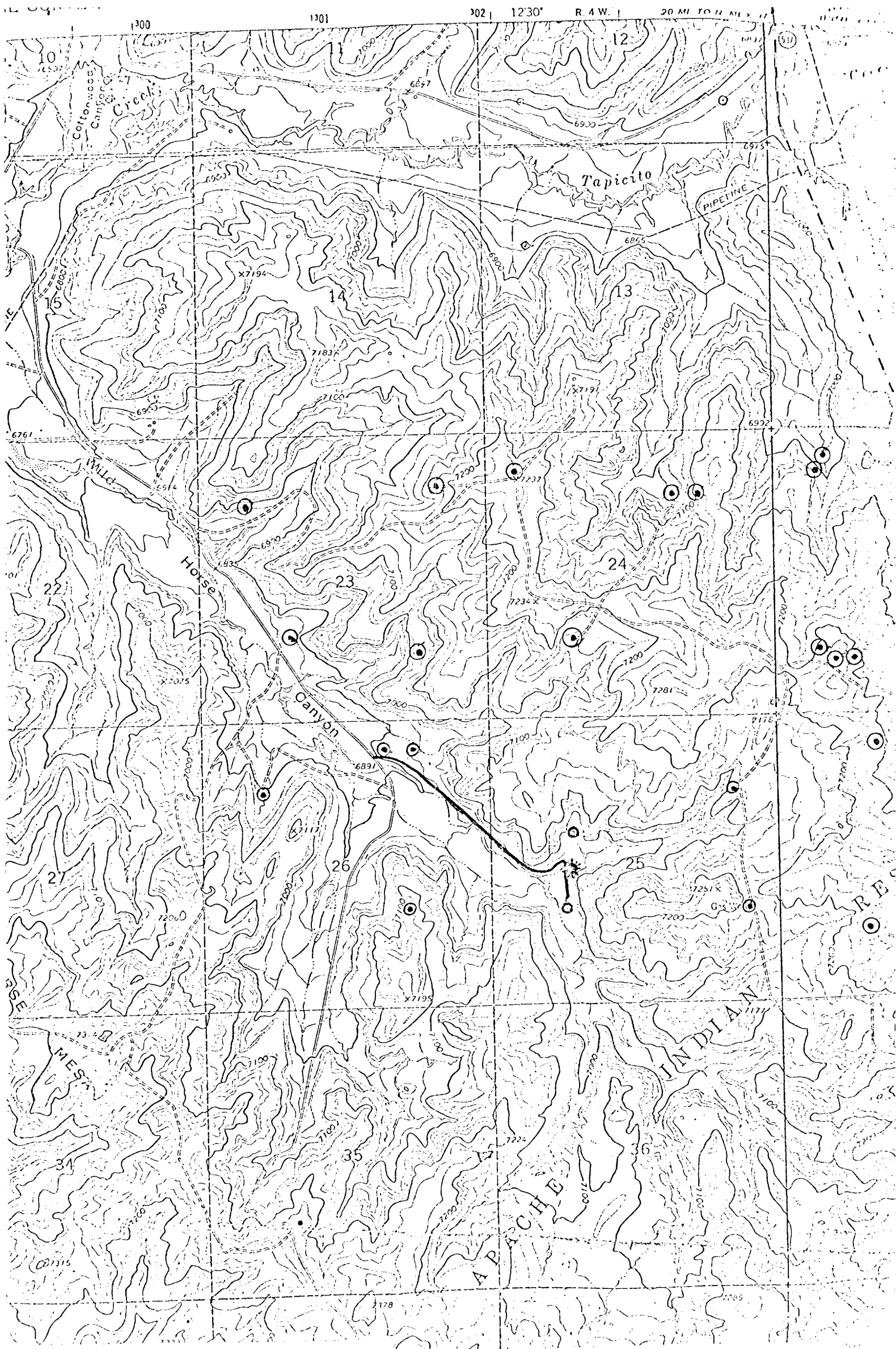
Vert. 1"=40'	C-C'	Horiz. 1"=100'

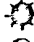



B-B'	Horiz. 1"=100'
6960	
6950	
6940	

KERR LAND SURVEYING

Date: 6/12/79

*Handwritten signature*



PROPOSED LOCATION   
 EXISTING LOCATIONS   
 PROPOSED ROADS   
 EXISTING ROADS 

Vicinity Map for  
 SOUTHLAND ROYALTY CO. #8 JICARILLA 101  
 2510' FSL 1450' FSL Sec 25-T26N-R4W  
 PIMA COUNTY, ARIZONA

11-10-50  
 2-10-51



DRILLING SCHEDULE - JICARILLA 101 #8

Location: 2510' FSL & 1450' FWL, Section 25, T26N, R4W, Rio Arriba, New Mexico

Field: Basin Dakota

Elevation: 6963' KB

Geology:

Formation Tops:	Ojo Alamo	1808'	Point Lookout	5728'
	Fruitland	3469'	Gallup	6770'
	Pictured Cliffs	3596'	Graneros	7804'
	Intermediate	3896'	Dakota	7880'
	Cliff House	5267'	Total Depth	8030'

Logging Program: Gamma Ray Density and Gamma Ray Induction at TD.

Coring Program: None

Natural Gauges: Gauge at TD. Also gauge any noticeable increases in gas.  
Record all gauges in tour book and turn in on morning report.

Drilling:

Contractor:

Tool Pusher:

SRC Answering Service: 325-1841

SRC Representative:

Dispatch Number: 325-7391

Mud Program: Fresh water mud to intermediate. Pretreat with 5% LCM at 3480'.  
Air from intermediate to TD.

Materials:

Casing Program:	Hole Size	Depth	Casing Size	Wt. & Grade
	12 1/4"	200'	9 5/8"	32# H-40
	8 3/4"	3896'	7"	23# K-55
	6 1/4"	3746' - 7000'	4 1/2"	10.5# K-55
		7000' - 8030'	4 1/2"	11.6# K-55

Float Equipment:

9 5/8" surface casing - Pathfinder cement guide shoe.

7" intermediate casing- Pathfinder type A guide shoe. Howco self-fill insert float valve. 5 Pathfinder rigid centralizers. Run float valve 2 joints above shoe. Run centralizers every other joint above shoe.

4 1/2" liner - BOT liner hanger with PBR and neoprene pack-off. Pathfinder type AP guide shoe and type A float collar.

Tubing:

Wellhead Equipment: 9 5/8" X 10", 2000# casing head.  
10", 2000# X 6", 2000#, tubing head with donut for 2 3/8" tubing.

Cementing:

9 5/8" surface casing- 110 sacks Class "B" with 3%  $\text{CaCl}_2$ . (130 cu. ft.)  
WOC for 12 hours. Test to 600 psi before drilling out.

7" intermediate casing-260 sacks 50/50 poz with 6% gel and .6% Halad 9  
(12.8PPG) followed by 70 sacks of Class "B" with  
2%  $\text{CaCl}_2$  and .6% Halad 9 (468 cu. ft.). Run temp.  
survey after 8 hours. WOC for 12 hours and test  
to 1000 psi before drilling out.

4 1/2" liner - Precede cement with 40 bbls. gelled water. Cement with  
450 sacks 50/50 poz with 6 % gel, .6% fluid loss additive  
and .3% retarder (666 cu. ft. - 50% excess to circulate  
liner).