

UNITED STATES
DEPARTMENT OF THE INTERIOR

GEOLOGICAL SURVEY

APPLICATION FOR PERMIT TO DRILL, DEEPEN, OR PLUG BACK

1a. TYPE OF WORK

DRILL ☒

DEEPEN ☐

PLUG BACK ☐

b. TYPE OF WELL

OIL

WELL ☒

GAS

WELL ☐

OTHER ☐

SINGLE

ZONE ☒

MULTIPLE

ZONE ☐

2. NAME OF OPERATOR

Atlantic Richfield Company

3. ADDRESS OF OPERATOR

501 Lincoln Tower Building, 1860 Lincoln St., Denver, CO 80295

4. LOCATION OF WELL (Report location clearly and in accordance with any State requirements.)*

At surface

SW NE 1825' FNL& 1850' FEL Section 19

At proposed prod. zone

Approximately Same

14. DISTANCE IN MILES AND DIRECTION FROM NEAREST TOWN OR POST OFFICE*

Approximately 11 1/2 miles from Lindrith, New Mexico

15. DISTANCE FROM PROPOSED*

1320' lease and

LOCATION TO NEAREST

PROPERTY OR LEASE LINE, FT.

(Also to nearest drlg. unit line, if any)

drlg unit

18. DISTANCE FROM PROPOSED LOCATION* Approx. 2600'

TO NEAREST WELL, DRILLING, COMPLETED,

OR APPLIED FOR, ON THIS LEASE, FT. from well #5, Sec. 19

16. NO. OF ACRES IN LEASE

1465.76 Gross

17. NO. OF ACRES ASSIGNED

TO THIS WELL

160 191.55

19. PROPOSED DEPTH

7480'

20. ROTARY OR CABLE TOOLS

Rotary

21. ELEVATIONS (Show whether DF, RT, GR, etc.)

6907' GL

22. APPROX. DATE WORK WILL START*

September 15, 1978 (Dirt work)

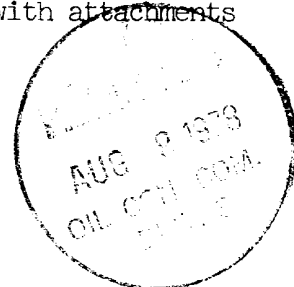
23.

PROPOSED CASING AND CEMENTING PROGRAM

SIZE OF HOLE	SIZE OF CASING	WEIGHT PER FOOT	SETTING DEPTH	QUANTITY OF CEMENT
12-1/4"	8-5/8" OD	24#	300'	300sx
7-7/8"	5-1/2" OD	15.5# & 17#	7480'	750 sx

Propose to drill well to depth sufficient to test Dakota, perforate, test stimulate and complete well in the Dakota.

Pursuant NTL-6, attached are: Certified Location Plot
Drilling Plan with attachments
Surface Use and Operational Plan with attachments



IN ABOVE SPACE DESCRIBE PROPOSED PROGRAM: If proposal is to deepen or plug back, give data on present productive zone and proposed new productive zone. If proposal is to drill or deepen directionally, give pertinent data on subsurface locations and measured and true vertical depths. Give blowout preventer program, if any.

24.

SIGNED

[Signature]

TITLE Operation Manager

DATE

8/4/78

(This space for Federal or State office use)

PERMIT NO.

APPROVAL DATE

APPROVED BY

CONDITIONS OF APPROVAL, IF ANY:

[Signature]

TITLE

State

RECEIVED

AUG 7 1978

*See Instructions On Reverse Side

U. S. GEOLOGICAL SURVEY
DURANGO, COLO.

NEW MEXICO OIL CONSERVATION COMMISSION
WELL LOCATION AND ACREAGE DEDICATION PLAT

Form C-102
Supersedes C-128
Effective 1-1-65

All distances must be from the outer boundaries of the Section.

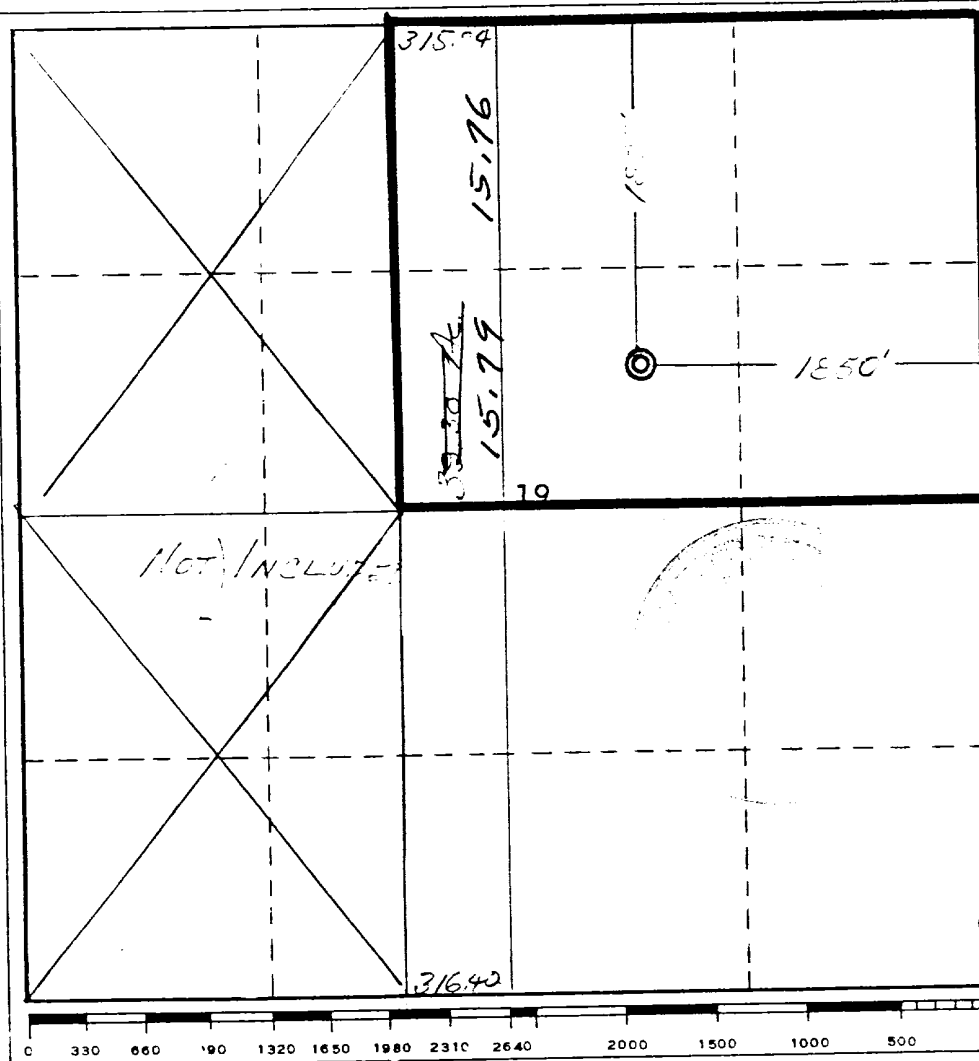
Operator THE ATLANTIC RICHFIELD COMPANY			Lease CHACON FEDERAL		Well No. 8
Unit Letter G	Section 19	Township 24 NORTH	Range 3 WEST	County RIO ARriba	
Actual Footage Location of Well: 1825 feet from the NORTH line and 1850 feet from the EAST line					
Ground Level Elev. 6907	Producing Formation Dakota		Pool Chacon ext	Dedicated Acreage: 196.55 Acres	

1. Outline the acreage dedicated to the subject well by colored pencil or hachure marks on the plat below.
2. If more than one lease is dedicated to the well, outline each and identify the ownership thereof (both as to working interest and royalty).
3. If more than one lease of different ownership is dedicated to the well, have the interests of all owners been consolidated by communitization, unitization, force-pooling, etc?

☐ Yes ☐ No If answer is "yes," type of consolidation _____

If answer is "no," list the owners and tract descriptions which have actually been consolidated. (Use reverse side of this form if necessary.) _____

No allowable will be assigned to the well until all interests have been consolidated (by communitization, unitization, forced-pooling, or otherwise) or until a non-standard unit, eliminating such interests, has been approved by the Commission.



CERTIFICATION

I hereby certify that the information contained herein is true and complete to the best of my knowledge and belief.

James E. Dwyer
Name
District Production Supervisor
Position
Atlantic Richfield Company
Company
August 10, 1978
Date

I hereby certify that the well location shown on this plat was plotted from field notes of actual surveys made by me or under my supervision, and that the same is true and correct to the best of my knowledge and belief.

Date Surveyed
30 June 1978

Registered Professional Engineer
and/or Land Surveyor

James P. Leese
James P. Leese

Certificate No.
1463

