

UNITED STATES
DEPARTMENT OF THE INTERIOR
GEOLOGICAL SURVEY

APPLICATION FOR PERMIT TO DRILL, DEEPEN, OR PLUG BACK

1a. TYPE OF WORK DRILL ☒ DEEPEN ☐ PLUG BACK ☐b. TYPE OF WELL
OIL WELL ☒ GAS WELL ☐ OTHER ☐ SINGLE ZONE ☐ MULTIPLE ZONE ☐2. NAME OF OPERATOR
Cotton Petroleum Corporation3. ADDRESS OF OPERATOR
2502 Lincoln Center Bldg., 1660 Lincoln St., Denver, CO. 802644. LOCATION OF WELL (Report location clearly and in accordance with any State requirements.)*
At surface 660' FSL, 1980' FEL

At proposed prod. zone

14. DISTANCE IN MILES AND DIRECTION FROM NEAREST TOWN OR POST OFFICE*

15. DISTANCE FROM PROPOSED*
LOCATION TO NEAREST
PROPERTY OR LEASE LINE, FT.
(Also to nearest drig. unit line, if any) 660'16. NO. OF ACRES IN LEASE
--17. NO. OF ACRES ASSIGNED
TO THIS WELL 160 acres18. DISTANCE FROM PROPOSED LOCATION*
TO NEAREST WELL, DRILLING, COMPLETED,
OR APPLIED FOR, ON THIS LEASE, FT.19. PROPOSED DEPTH
7700'20. ROTARY OR CABLE TOOLS
Rotary21. ELEVATIONS (Show whether DF, RT, GR, etc.)
6753' GR22. APPROX. DATE WORK WILL START*
1-1-79

23. PROPOSED CASING AND CEMENTING PROGRAM

SIZE OF HOLE	SIZE OF CASING	WEIGHT PER FOOT	SETTING DEPTH	QUANTITY OF CEMENT
12-1/4"	8-5/8"	24.0	300'	300 sacks
7-7/8"	4-1/2"	10.50 & 11.60	7700'	To be determined

It is proposed to drill this well with rotary tools, and drilling mud as a circulation medium, through the Dakota Formation. Possible production zones in the Gallup and Dakota Formation will be completed and downhole commingled. Production casing will be cemented in such a manner as to protect the Pictured Cliffs Formation. Fence reserve pit on 3 sides before spudding. Fence 4th side when MORT.

Estimated Formation Tops

Pictured Cliffs	2850'	Greenhorn	7000'
Cliff House	4490'	Graneros	7055'
Gallup	6160'	Dakota	7075'

The SE/4 of Section 4 is dedicated to this well. 160 acres. The natural gas to be produced from this well is committed.

IN ABOVE SPACE DESCRIBE PROPOSED PROGRAM: If proposal is to deepen or plug back, give data on present productive zone and proposed new productive zone. If proposal is to drill or deepen directionally, give pertinent data on subsurface locations and measured and true vertical depths. Give blowout preventer program, if any.

24. SIGNED D. E. Wood TITLE Division Production Manager DATE 9-5-78

(This space for Federal or State office use)

PERMIT NO.

APPROVAL DATE

APPROVED BY

TITLE

CONDITIONS OF APPROVAL, IF ANY:

Frank

RECEIVED

SEP 8 1978

U. S. GEOLOGICAL SURVEY
DURANGO, COLO.

*See Instructions On Reverse Side

**NEW MEXICO OIL CONSERVATION COMMISSION
WELL LOCATION AND ACREAGE DEDICATION PLAT**

Form C-102
Supersedes C-128
Effective 1-1-65

All distances must be from the outer boundaries of the Section.

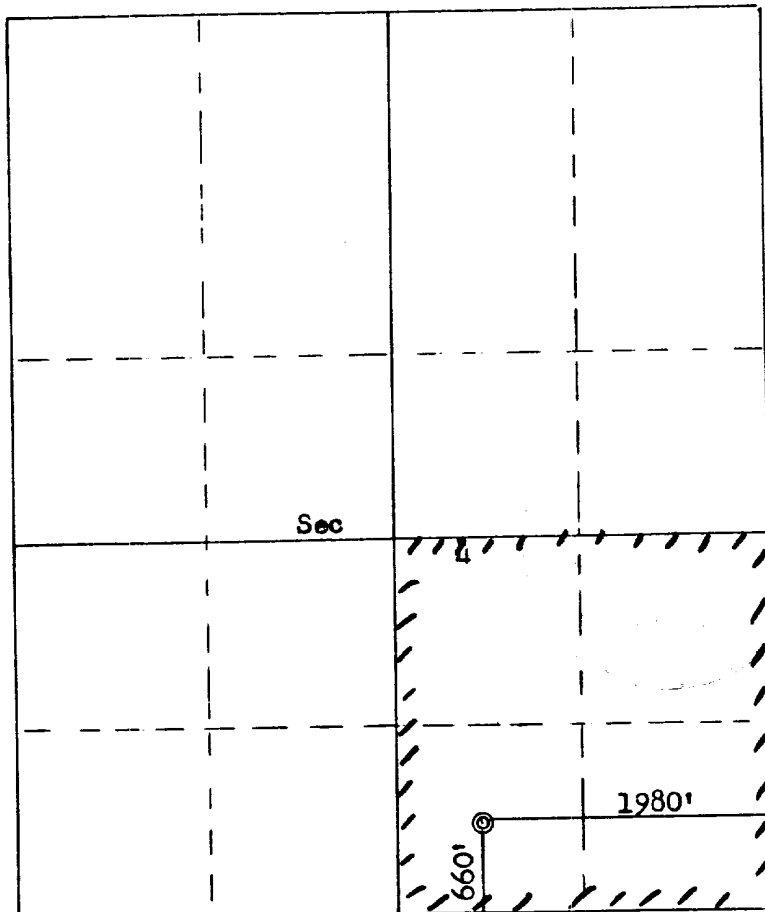
Operator COTTON PETROLEUM CORPORATION			Lease APACHE		Well No. 124
Unit Letter 0	Section 4	Township 24N	Range 4W	County Rio Arriba	
Actual Footage Location of Well: 660 feet from the South line and 1980 feet from the East line					
Ground Level Elev. 6753	Producing Formation Dakota		Pool Lindrieth Gallup-Dakota West		Dedicated Acreage: 160 Acres

1. Outline the acreage dedicated to the subject well by colored pencil or hachure marks on the plat below.
2. If more than one lease is dedicated to the well, outline each and identify the ownership thereof (both as to working interest and royalty).
3. If more than one lease of different ownership is dedicated to the well, have the interests of all owners been consolidated by communitization, unitization, force-pooling, etc?

☐ Yes ☐ No If answer is "yes," type of consolidation _____

If answer is "no," list the owners and tract descriptions which have actually been consolidated. (Use reverse side of this form if necessary.) _____

No allowable will be assigned to the well until all interests have been consolidated (by communitization, unitization, forced-pooling, or otherwise) or until a non-standard unit, eliminating such interests, has been approved by the Commission.



SCALE: 1"=1320'

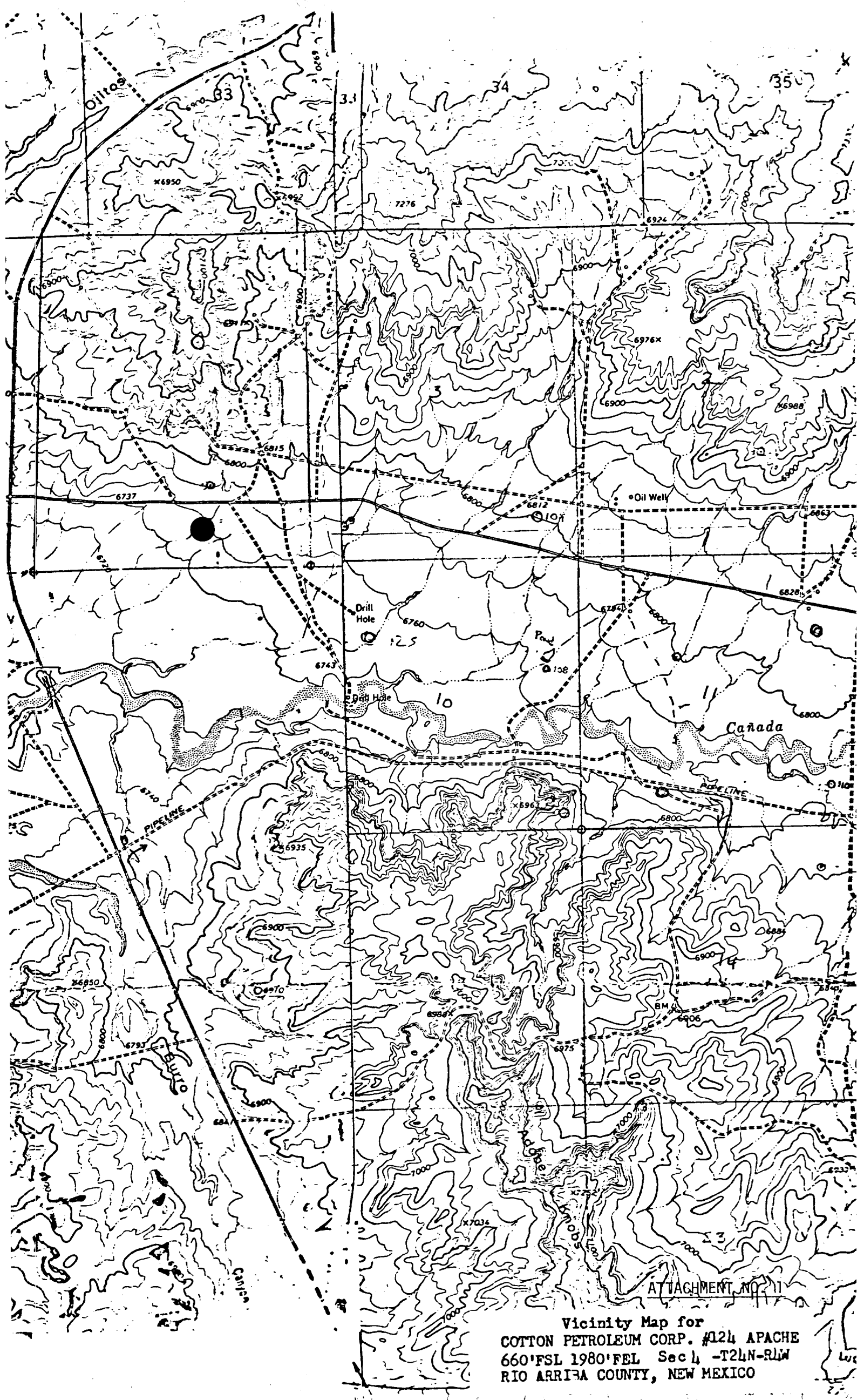
CERTIFICATION

I hereby certify that the information contained herein is true and complete to the best of my knowledge and belief.

Name
D. E. Wood
Position
Division Production Manager
Company
Cotton Petroleum Corporation
Date
September 5, 1978

I hereby certify that the well location shown on this plat was plotted from field notes of actual surveys made by me or under my supervision, and that the same is true and correct to the best of my knowledge and belief.

Date Surveyed
August 1, 1978
Registered Professional Engineer and Land Surveyor
Fred B. Kerr Jr.
Certificate No. **3950**



Vicinity Map for
COTTON PETROLEUM CORP. #124 APACHE
660'FSL 1980'FEL Sec 4 -T24N-R14W
RIO ARRIJA COUNTY, NEW MEXICO