

UNITED STATES
DEPARTMENT OF THE INTERIOR
GEOLOGICAL SURVEY

APPLICATION FOR PERMIT TO DRILL, DEEPEN, OR PLUG BACK

1a. TYPE OF WORK

DRILL ☒DEEPEN ☐PLUG BACK ☐

b. TYPE OF WELL

OIL
WELL ☐GAS
WELL ☐OTHER ☐SINGLE
ZONE ☒MULTIPLE
ZONE ☐

2. NAME OF OPERATOR

Odessa Natural Corporation Att: John Strojek

3. ADDRESS OF OPERATOR

P.O. Box 3908, Odessa, Texas 79760

4. LOCATION OF WELL (Report location clearly and in accordance with any State requirements.)*

At surface

790' FSL, 790' FWL

At proposed prod. zone

Same

14. DISTANCE IN MILES AND DIRECTION FROM NEAREST TOWN OR POST OFFICE*

Not Applicable

15. DISTANCE FROM PROPOSED*

LOCATION TO NEAREST
PROPERTY OR LEASE LINE, FT.
(Also to nearest drig. unit line, if any)

790'

16. NO. OF ACRES IN LEASE

17. NO. OF ACRES ASSIGNED
TO THIS WELL

160

18. DISTANCE FROM PROPOSED LOCATION*
TO NEAREST WELL, DRILLING, COMPLETED,
OR APPLIED FOR, ON THIS LEASE, FT.

19. PROPOSED DEPTH

7,530'

20. ROTARY OR CABLE TOOLS

Rotary

21. ELEVATIONS (Show whether DF, RT, GR, etc.)

7092' GL, 7105' DF, 7106' KB

22. APPROX. DATE WORK WILL START*

11-10-78

23.

PROPOSED CASING AND CEMENTING PROGRAM

SIZE OF HOLE	SIZE OF CASING	WEIGHT PER FOOT	SETTING DEPTH	QUANTITY OF CEMENT
12-1/4"	8-5/8"	24.0	350	350 Sacks
7-7/8"	4-1/2"	10.50 & 11.60	7530	To be determined

It is proposed to drill this well with rotary tools, using oil base mud as circulation medium, through the Dakota Formation. Possible productive zones in the Dakota Formation will be completed. Production casing will be cemented in such a manner as to protect the Pictured Cliffs Formation.

Estimated Formation Tops

Pictured Cliffs	2990'	Green Horn	7090'
Cliff House	4560'	Graneros	7130'
Gallup	6080'	Dakota	7150'

The SW/4 Section 34 is dedicated to this well.

The natural gas produced from this well is committed.

IN ABOVE SPACE DESCRIBE PROPOSED PROGRAM: If proposal is to deepen or plug back, give data on present productive zone and proposed new productive zone. If proposal is to drill or deepen directionally, give pertinent data on subsurface locations and measured and true vertical depths. Give blowout preventer program, if any.

24. For: Odessa Natural Corporation

President, Walsh Engineering
& Production Corp.SIGNED: Ewell R. Walsh, P.E.

DATE: 10-20-78

(This space for Federal or State office use)

PERMIT NO. _____

APPROVAL DATE _____

APPROVED BY _____

TITLE _____

DATE _____

CONDITIONS OF APPROVAL, IF ANY:

ok Frank

*See Instructions On Reverse Side

U. S. GEOLOGICAL SURVEY
U. S. G. S.

OCT 23 1978

RECEIVED
OCT 24 1978
OIL COM. DIV.
9/17/3

**NEW MEXICO OIL CONSERVATION COMMISSION
WELL LOCATION AND ACREAGE DEDICATION PLAT**

Form C-102
Supersedes C-120
Effective 1-1-67

All distances must be from the outer boundaries of the Section

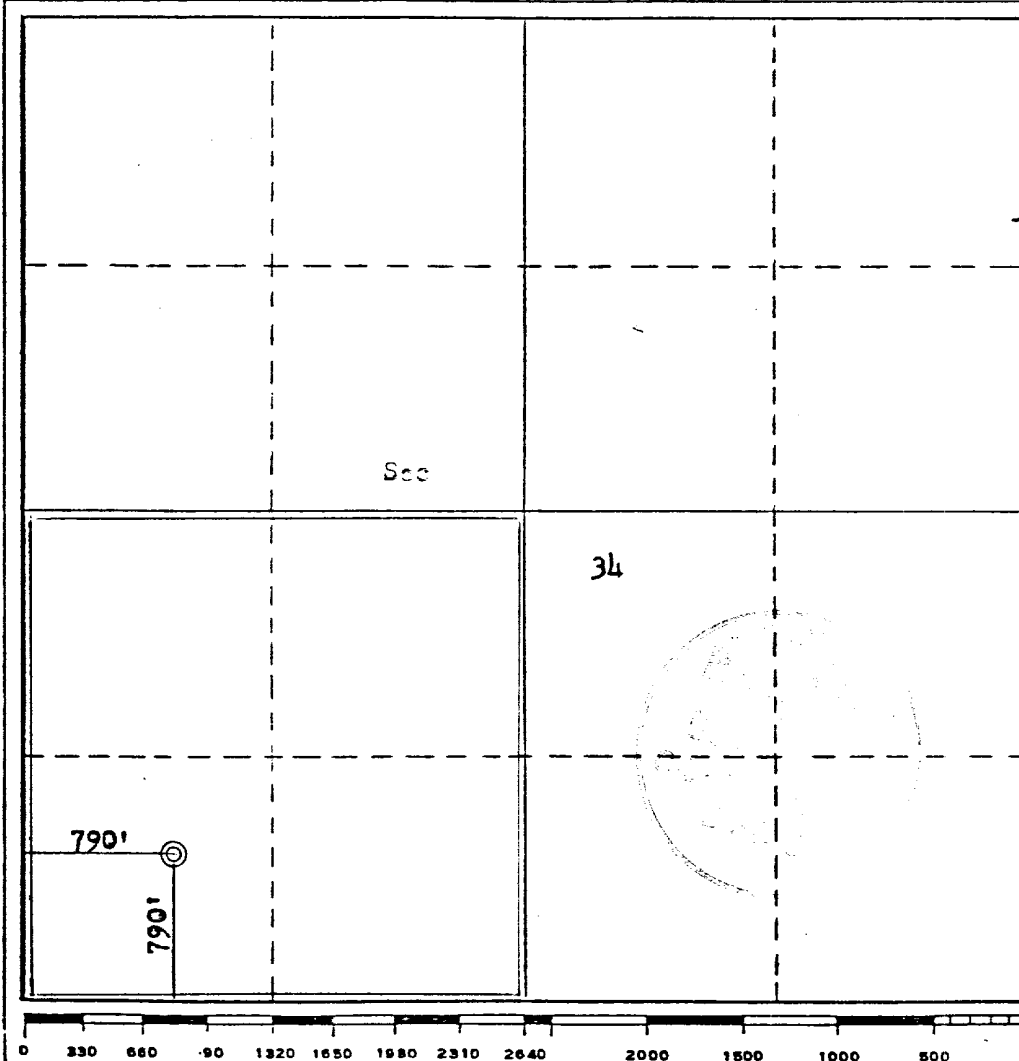
Operator ODESSA NATURAL CORPORATION			Lease MOBIL-FEDERAL 34		Well No. 1
Unit Letter M	Section 34	Township 24N	Range 3W	County Rio Arriba	
Actual Footage Location of Well: 790 feet from the South line and 790 feet from the West line					
Ground Level Elev. 7092	Producing Formation Dakota		Pool Chacon Dakota Associated ext		Dedicated Acreage: 160 Acres

1. Outline the acreage dedicated to the subject well by colored pencil or hachure marks on the plat below.
2. If more than one lease is dedicated to the well, outline each and identify the ownership thereof (both as to working interest and royalty).
3. If more than one lease of different ownership is dedicated to the well, have the interests of all owners been consolidated by communitization, unitization, force-pooling, etc?

☐ Yes ☐ No If answer is "yes," type of consolidation _____

If answer is "no," list the owners and tract descriptions which have actually been consolidated. (Use reverse side of this form if necessary.) _____

No allowable will be assigned to the well until all interests have been consolidated (by communitization, unitization, forced-pooling, or otherwise) or until a non-standard unit, eliminating such interests, has been approved by the Commission.



CERTIFICATION

I hereby certify that the information contained herein is true and complete to the best of my knowledge and belief.

Name **Ewell N. Walsh, P.E.**
President

Position
Walsh Engineering & Company Production Corp.
October 20, 1978

Date

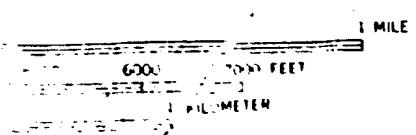
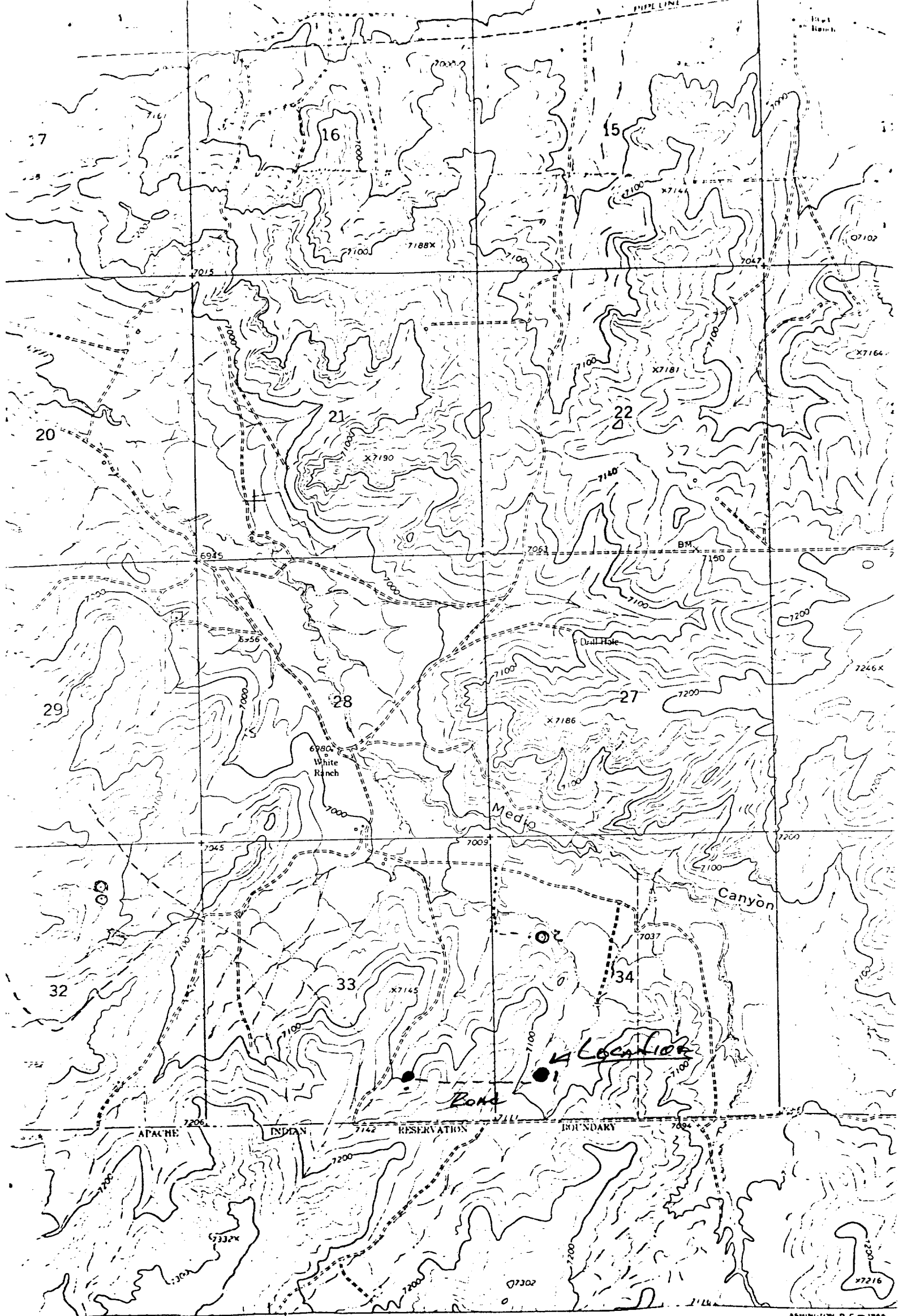
I hereby certify that the well location shown on this plat was plotted from field notes of actual surveys made by me or under my supervision, and that the same is true and correct to the best of my knowledge and belief.

Date Surveyed
October 19, 1978

Registered Professional Engineer and/or Land Surveyor

Fred A. Kerr, Jr.

Certificate No. **3950**
KERR, JR.



Vicinity Map for
ODESSA NATURAL CORP. #1 MOBIL-FEDERAL 34
790° FSL 790° FWL Sec 34-T24N-R3W
RIO ARRIBA COUNTY, NEW MEXICO

WASHINGTON D C - 1966

LOCATION
right duty

State B...