

UNITED STATES
DEPARTMENT OF THE INTERIOR
GEOLOGICAL SURVEY

30 039-2-958

APPLICATION FOR PERMIT TO DRILL, DEEPEN, OR PLUG BACK

1a. TYPE OF WORK
DRILL ☒ DEEPEN ☐ PLUG BACK ☐

b. TYPE OF WELL
OIL WELL ☒ GAS WELL ☒ OTHER ☐ SINGLE ZONE ☒ MULTIPLE ZONE ☐

2. NAME OF OPERATOR
Atlantic Richfield Company

3. ADDRESS OF OPERATOR
Suite 501, 1860 Lincoln Street, Denver, Colorado 80295

4. LOCATION OF WELL (Report location clearly and in accordance with any State requirements.)*
At surface

1500' FNL & 800' FWL Section 17 (SW NW) (Unit E)

At proposed prod. zone

Approx. same

14. DISTANCE IN MILES AND DIRECTION FROM NEAREST TOWN OR POST OFFICE*

9 miles west of Lindrith, New Mexico

15. DISTANCE FROM PROPOSED* 800' f/lease line
LOCATION TO NEAREST
PROPERTY OR LEASE LINE, FT.
(Also to nearest drlg. unit line, if any)

16. NO. OF ACRES IN LEASE
160

17. NO. OF ACRES ASSIGNED
TO THIS WELL
160

18. DISTANCE FROM PROPOSED LOCATION* Approx. 400'
TO NEAREST WELL, DRILLING, COMPLETED
OR APPLIED FOR, ON THIS LEASE, FT.
17 1/2 mi. Cliff
well in NW 1/4 Sec. 17

19. PROPOSED DEPTH
7670'

20. ROTARY OR CABLE TOOLS
Rotary

21. ELEVATIONS (Show whether DF, RT, GR, etc.)

6867' GR (Ungraded)

22. APPROX. DATE WORK WILL START*

Dirt work when appl. rec'd
approx. Nov. 15, 1978

23. PROPOSED CASING AND CEMENTING PROGRAM

SIZE OF HOLE	SIZE OF CASING	WEIGHT PER FOOT	SETTING DEPTH	QUANTITY OF CEMENT
12-1/4"	8-5/8" OD	24#	300'	300 sx.
7-7/8"	5-1/2" OD	15.5 & 17#	7670' T.D.	700 sx.

Propose to drill well to a depth sufficient to test Dakota, perforate, test, stimulate and complete.

Pursuant to NTL-6, attached are: Certified Location Plat
Drilling Plan w/attachments
Surface Use and Operations Plan

IN ABOVE SPACE DESCRIBE PROPOSED PROGRAM: If proposal is to deepen or plug back, give data on present productive zone and proposed new productive zone. If proposal is to drill or deepen directionally, give pertinent data on subsurface locations and measured and true vertical depths. Give blowout preventer program, if any.

24.

SIGNED

W. W. Waites

TITLE Operations Manager

DATE October 27, 1978

(This space for Federal or State office use)

PERMIT NO.

APPROVAL DATE

APPROVED BY

TITLE

DATE

CONDITIONS OF APPROVAL, IF ANY:

ok Frank

W. W. Waites

*See Instructions On Reverse Side

RECEIVED

OCT 30 1978

U. S. GEOLOGICAL SURVEY
DURANGO, COLO.

NEW MEXICO OIL CONSERVATION COMMISSION
WELL LOCATION AND ACREAGE DEDICATION PLAT

Form C-102
Supersedes C-128
Effective 1-1-55

All distances must be from the outer boundaries of the Section.

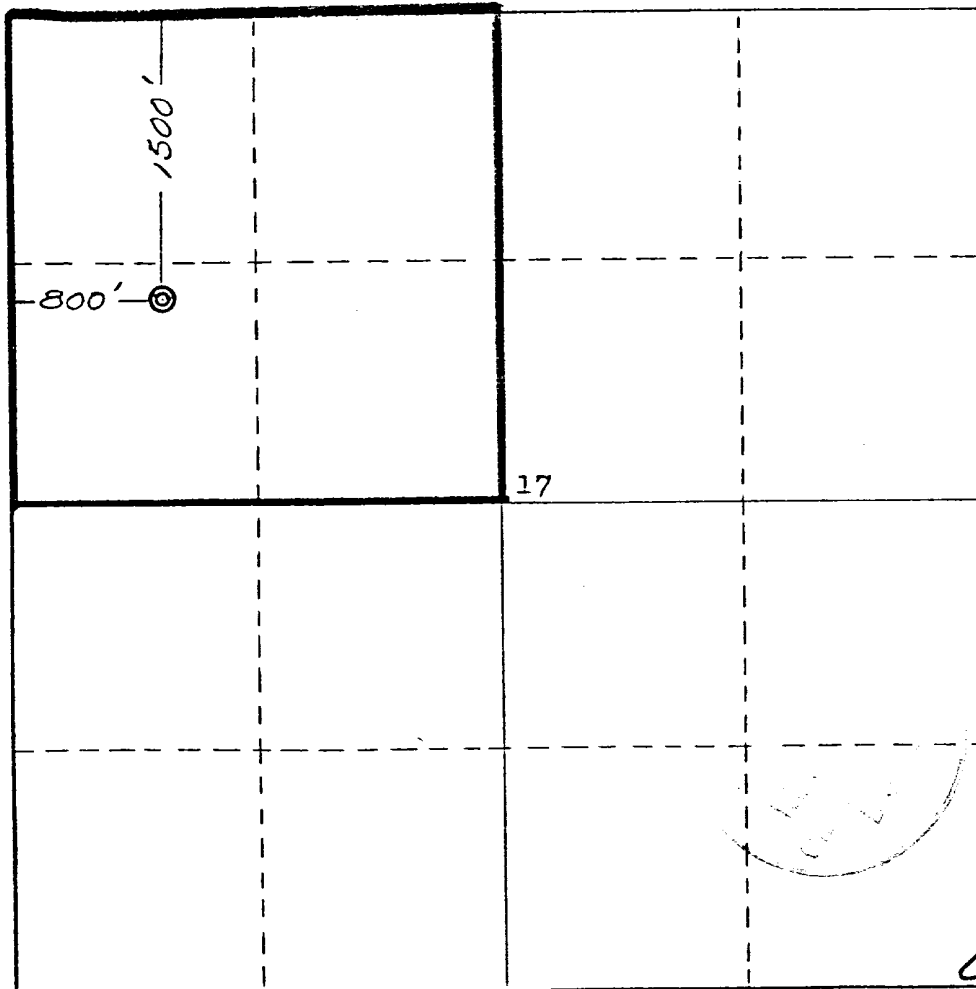
Operator THE ATLANTIC RICHFIELD COMPANY			Lease TONKIN FEDERAL		Well No. 4
Unit Letter E	Section 17	Township 24 NORTH	Range 3 WEST	County RIO ARriba	
Actual Footage Location of Well: 1500 feet from the NORTH line and 800 feet from the WEST line					
Ground Level Elev. 6867	Producing Formation Dakota		Pool West Lindrith Gallup		Dedicated Acreage: 160 Acres

1. Outline the acreage dedicated to the subject well by colored pencil or hachure marks on the plat below.
2. If more than one lease is dedicated to the well, outline each and identify the ownership thereof (both as to working interest and royalty). **N/A 100% Atlantic Richfield Company**
3. If more than one lease of different ownership is dedicated to the well, have the interests of all owners been consolidated by communitization, unitization, force-pooling, etc?

☐ Yes ☐ No If answer is "yes," type of consolidation _____

If answer is "no," list the owners and tract descriptions which have actually been consolidated. (Use reverse side of this form if necessary.) _____

No allowable will be assigned to the well until all interests have been consolidated (by communitization, unitization, forced-pooling, or otherwise) or until a non-standard unit, eliminating such interests, has been approved by the Commission.



CERTIFICATION

I hereby certify that the information contained herein is true and complete to the best of my knowledge and belief.

Name

W. A. Walther, Jr.

Position

Operations Manager

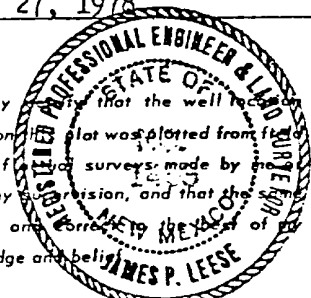
Company

Atlantic Richfield Company

Date

October 27, 1978

I hereby certify that the well location shown on this plat was plotted from the notes of actual surveys made by me under my supervision, and that the same is true and correct to the best of my knowledge and belief.



Date Surveyed

13 October 1978

Registered Professional Engineer
and/or Land Surveyor

James P. Leese
James P. Leese

Certificate No.

1463

