

UNITED STATES
DEPARTMENT OF THE INTERIOR
BUREAU OF LAND MANAGEMENT

Sundry Notices and Reports on Wells

10/27/95 PM 1:20

1. Type of Well
GAS

2. Name of Operator
MERIDIAN OIL

3. Address & Phone No. of Operator
PO Box 4289, Farmington, NM 87499 (505) 326-9700

4. Location of Well, Footage, Sec., T, R, M
1840' FSL, 1800' FWL, Sec. 3, T-25-N, R-6-W, NMPM

5. Lease Number
SF-078885
6. If Indian, All. or
Tribe Name
7. Unit Agreement Name
Canyon Largo Unit
8. Well Name & Number
Canyon Largo U #287
9. API Well No.
30-039-21966
10. Field and Pool
Basin Dakota/
Blanco Mesaverde
11. County and State
Rio Arriba Co, NM

12. CHECK APPROPRIATE BOX TO INDICATE NATURE OF NOTICE, REPORT, OTHER DATA

Type of Submission

Type of Action

<input checked="" type="checkbox"/> Notice of Intent	<input type="checkbox"/> Abandonment	<input type="checkbox"/> Change of Plans
<input type="checkbox"/> Subsequent Report	<input checked="" type="checkbox"/> Recompletion	<input type="checkbox"/> New Construction
<input type="checkbox"/> Final Abandonment	<input type="checkbox"/> Plugging Back	<input type="checkbox"/> Non-Routine Fracturing
	<input type="checkbox"/> Casing Repair	<input type="checkbox"/> Water Shut off
	<input type="checkbox"/> Altering Casing	<input type="checkbox"/> Conversion to Injection
	<input checked="" type="checkbox"/> Other - Temporarily abandon Dakota	

13. Describe Proposed or Completed Operations

It is intended to temporarily abandon the Dakota formation in order to test the Point Lookout "B" sandstone. The zone will be tested with foam stimulation - no sand. If the Point Lookout is commercial, will pursue commingled production approval. If the Point Lookout is non-commercial, it will be abandoned.

RECEIVED
OCT 10 1995
BLM CON. DIV.
DIST. 3

14. I hereby certify that the foregoing is true and correct.

Signed [Signature] (JME3) Title Regulatory Administrator Date 9/27/95

(This space for Federal or State Office use)

APPROVED BY _____ Title _____ Date _____

CONDITION OF APPROVAL, if any:

APPROVED

OCT 03 1995

DISTRICT MANAGER

District I
PO Box 1980, Hobbs, NM 8824 -1980
District II
PO Drawer DD, Artesia, NM 81211-0719
District III
1000 Rio Hrazos Rd., Aztec, NM 87410
District IV
PO Box 2088, Santa Fe, NM 87504-2088

State of New Mexico
Energy, Minerals & Natural Resources Department

OIL CONSERVATION DIVISION
PO Box 2088
Santa Fe, NM 87504-2088

Form C-1
Revised February 21, 1990
Instructions on back
Submit to Appropriate District Office
State Lease - 4 Copies
Fee Lease - 3 Copies

☐ AMENDED REPORT

WELL LOCATION AND ACREAGE DEDICATION PLAT

API Number	Pool Code	Pool Name
30-039-21966	72319/71599	Blanco Mesaverde/Basin Dakota
Property Code	Property Name	Well Number
6886	Canyon Largo Unit	287
OGRID No.	Operator Name	Elevation
14538	MERIDIAN OIL INC.	6750'

¹⁰ Surface Location

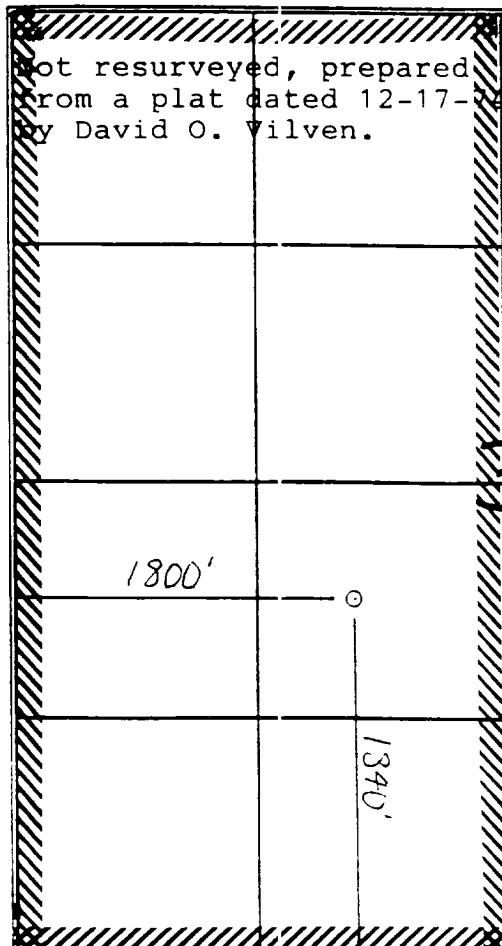
UL or lot no.	Section	Township	Range	Lot Ida	Feet from the	North/South line	Feet from the	East/West line	County
K	3	25 N	6 W		1840	South	1800	West	R.A.

¹¹ Bottom Hole Location If Different From Surface

UL or lot no.	Section	Township	Range	Lot Ida	Feet from the	North/South line	Feet from the	East/West line	County

¹² Dedicated Acres	¹³ Joint or Infill	¹⁴ Consolidation Code	¹⁵ Order No.
W/321.37	W/321.37		

NO ALLOWABLE WILL BE ASSIGNED TO THIS COMPLETION UNTIL ALL INTERESTS HAVE BEEN CONSOLIDATED
OR A NON-STANDARD UNIT HAS BEEN APPROVED BY THE DIVISION



RECEIVED
OCT 10 1995

OIL CON. DIV.
DIST. 3

¹⁷ OPERATOR CERTIFICATION

I hereby certify that the information contained herein is true and complete to the best of my knowledge and belief.

Signature
Peggy Bradfield
Printed Name
Regulatory Administrator
Title
9-27-95
Date

¹⁸ SURVEYOR CERTIFICATION

I hereby certify that the well location shown on this plat was plotted from field notes of actual surveys made by me or under my supervision, and that the same is true and correct to the best of my belief.

8-16-95
Date of Survey
Signature and Seal of Professional Surveyor

Certificate Number

Canyon Largo Unit # 287
Mesaverde Recompletion
Unit K-Sec03-T25N-R06W
Lat 36° 25' 33"
Long 107° 29' 54"

-
- No Drill Gas or Air required.
 - Dig work pits for water recovery/flare pit, fence pits.
 - Comply with all BLM, NMOCD, and MOI rules and regulations.
 - Always hold Safety Meetings!
-

This well is a formation test of the Point Lookout "B" Sandstone. The offsetting Canyon Largo Unit #388 (265 ft from #287) was drilled horizontally in this zone in 1993. To date, the well has been unproductive. The #287 completion will provide information on the productivity of the "B" zone when completed conventionally. The stimulation below is designed to stay in-zone and economically test the "B" horizon (justification of no sand stimulation). Based on the results of this test, the team will recommend either a stimulation be performed on the CLU #388 or that the well be abandoned due to uneconomic reservoir conditions.

1. Move In, RU pulling unit. Kill tubing with 2% KCl water. Load annulus. ND WH, NU BOP. Test operation of BOP & stripping head and bleed line. PT annulus to 500 psi prior to release of PKR.
2. Release Model R-3 PKR @ 5041' and TOOH with 2-3/8" tubing (232 jts total from 7308'). Lay down 1900' of tubing. The R-3 PKR will need redressing to use, exchange w/Baker for R-3 ready to go. R-3 PKR will be used for all work.
3. RU wireline, RIH w/ 4-1/2" CIBP. Set @ 5400', above DV tool @ 5713'. RD wireline, PU 2-3/8" and R-3 PKR. TIH to 5350', roll hole with 2% KCl water. Set PKR above BP for pressure test. RU acid truck PT CIBP to 4000 psi. Release PKR, spot 100 gallons 7-1/2% HCl acid with 2 gal/1000 corrosion inhibitor @ 5100'. RD acid truck, TOOH. Inspect PKR for reuse.
4. Run quartz pressure bomb in offset well CLU # 388.
5. RU wireline, under packoff perforate Point Lookout B interval with a single 3-1/8" HSC gun of 20' total length from 5092' to 5102'. Shoot 10' of interval at 2 SPF phased at 120 degrees. Shoot 12 gram Owen-302 charges for 0.34" hole size. Total holes are 20. TOOH. RD wireline.
6. PU production tubing string as follows. **NOTE: Wellhead/Tubinghead isolation is necessary to withstand a pressure of 4000 psi.** Run one joint OE, expendable check, 1.81" F nipple, same R-3 PKR, and remaining tubing. Land tubing at 5050' above zone of interest. Set PKR. Load annulus with 2% KCl water and test to 500 psi. Set plug in profile nipple. Test tubing to 4000 psi for 10 minutes, with pressure on annulus. Retrieve plug from nipple. ND BOP, NU WH. Pump off check with water. Establish rate below PKR with 2% KCl water to ensure perforations are open, note any communication. Flow well up tubing to ensure check is pumped off. RD and release pulling unit.
7. F.U swabbing unit. Swab well to tank recovering all fluid. Note and record volume at each run. Once 120% of tubing volume (about 24 bbls) has been recovered take water sample. Continue swabbing operations, monitoring daily. Maximum estimate of 3 days.
8. F.U stimulation company. PT lines. Stimulate well down 2-3/8" tubing with a 60 Quality Nitrogen foam (NO SAND will be pumped). Maximum pressure will be 4000 psi. Release pressure, flow well back through manifold to a tank. Recover all liquids.

Canyon Largo Unit #287
Meridian Oil, Inc.
8/12/95

9. Obtain water, oil, and gas samples from this zone.
10. Pull quartz bomb from CLU #388.
11. Based on the outcome of this project, the CLU #287 Mesaverde will either be commingled with the Dakota or abandoned. These procedures will be developed by engineering upon completion of the project.

Approved: J.S. F. 8/13
Drilling Superintendent

Concur: JME for TDS 8/11
Team Leader

JME JME

Suggested Vendors:

PT, Acid spot

or BJ Services 327-6222
Cementers, Inc. 632-3683
(To be determined @ time of work)

Bridge Plugs, Packers
Cased Hole, Perforating
Stimulation
Engineering

Baker 325-0216
Schlumberger 325-5006
Halliburton 325-3575
Joan Easley 599-4026-work
324-2717-pager
327-3061-home

PERTINENT DATA SHEET
CANYON LARGO UNIT #287

Location: 1840' FSL, 1800' FWL
Unit K, Section 3, T25N, R6W
Rio Arriba County, New Mexico

Elevation: 6750' GL, 6761' KB

Field: Basin Dakota

DP#: 45013A
GWl: 81%
NRI: 68%

Spud Date: 07-07-79
Completion Date: 10-08-79

TD: 7473'
PBTD: 7456'

Casing Record:

<u>Hole Size</u>	<u>Casing Size</u>	<u>Wt & Grade</u>	<u>Depth Set</u>	<u>Sxs Cement</u>	<u>CBL Tops</u>
12-1/4"	9-5/8"	36#, K-55	222'	190	224 ft3 to surface
8-3/4" - 7-7/8"	4-1/2"	11.6#, K-55	7473'	1st 304	6254' 455 ft3 34 jts (991')
@ 6100'	4-1/2"	10.5#, K-55	DV @ 5713'	2nd 375	4450' 607 ft3 198 jts (6462')
			DV @ 3035'	3rd 254	1760' 410 ft3

NOTE: Cement Intervals: TD - 6254', 5724-4450' (ratty 4590-4450'), 3036-1760' (ratty 2750-1760')

Tubing Record:

<u>Tubing Size</u>	<u>Weight & Grade</u>	<u>Depth Set</u>
2-3/8"	4.7#, J-55	7308' Bahn 1.81" 10 F Nipple @ 7276'
	MODEL R-3 PKR	5041' 160 above pkr, 72 tail

Formation Tops:

San Jose:	Surface	Cliffhouse:	4496'	Two Wells:	7117
Nacimiento:	615'	Menefee:	4517'	Paguate:	7164
Ojo Alamo:	1130'	Point Lookout:	5068'	Cubero:	7205
Kirtland:	1358'	Mancos:	5233'	Oak Canyon:	7302
Fruitland:	1702'	Niobrara (Gallup):	6122'	Encinal Canyon:	7323
Pictured Cliffs:	1854'	Juana Lopez:	6687'	Burro Canyon:	7352
Lewis:	1900'	Greenhorn:	7015'	Morrison:	7450
Chacra:	1721'	Graneros:	7051'		

Logging Record:

IES-GR-Density, GR-CCL-CBL - Ran 1994

Stimulation:

Perf Dakota (0.34" d.a) 7128', 7180', 7212', 7217', 7222', 7227', 7243', 7255', 7260', 7272', 7294', 7302', (total: 12 holes)
BD & Balloff 1200 gal 15% HCI w/24 balls to 3800 psi. Recover balls. Frac w/56,360 gals Gel, 114,000# 20/40 &
7,700# 10/20 sand @ 24 BPM ATP 3500, ISIP 2500. FG = 0.75 psi.

Workover History:

09-28-79: Frac. Land tbg within 40 hrs of frac. Guage increasing. Pitot 734 mcf.
10-08-79: 7 day SICP 2615 psi, SITP 1100 psi. Note liquid.
04-22-93: Swabbing casing 802 psi. Unloaded, SI equalize. Release. Casing failure suspected.
12-04-93: Csg 0 psi, tbg 0 psi, brdhead 0 psi. Well on slight vacuum.
03-22-94: Ran scraper, run pkr set @ 6103', tbg @ 7298'. Swab well, flowing csg pressure 900 psi. Swab over 250 bbls fluid back from the well.
07-05-94: Fixed csg failures and added Dakota pay foam acid. Hole @ 4540', pumped 50 sx (pkr @ 4216'). Hole @ 2240', pumped 200 sx cmt. Circ through to Bradenhead & Annulus. Very small leak @ 1975', spotted 150 sx across hole. Drilled out. Tested good. Ran logs.

Production History:

ISIP = 2627 SICP = 802 Last Production = 80 mcf/d, 0.5 bopd before leak
Cum Gas = 526 mmcf Cum Oil = 1,819 bbls Line pressure = 135 psi 900 psi tbg press after swab

Transporter:

Oil/Condensate: Meridian Oil

Gas: Gas Company of New Mexico

Canyon Largo Unit #287

T25N R06W 03K

Dakota Workover

Elevation: 6750' GL

Current

12-1/4" hole

9-5/8" 36# K-55
csg @ 316' w/
190 sx to surface

Stage Tool
@ 3035'
w/254 sx

Stage Tool
@ 5713'
w/375 sx

Model R-3
Packer @ 5041'

2-3/8" 4.7# J-55
tbg @ 7308'

7-7/8" hole

4-1/2" 10.5# K-55 csg @ 6100'

4-1/2" 11.6# K-55 csg @ 6100'-7473'
w/304 sx

Dakota Perfs:
12 holes
7128' to
7302'

PBTD: 7456'
TD: 7473'

Cement Intervals:

TD-6254'

5724'-4450' (ratty 4590'-4450')

3036'-1760' (ratty 2750'-1760')

Proposed

San Jose	@ Surface
Nacimiento	@ 615'
Ojo Alamo	@ 2130'
Kirtland	@ 2358'
Fruitland	@ 2702'
Pictured Cliffs	@ 2854'
Lewis	@ 2900'
Chacra	@ 3721'
Cliffhouse	@ 4496'
Menefee	@ 4517'
Point Lookout	@ 5068'
Mancos	@ 5233'
Nibrara (GLP)	@ 6122'
Juana Lopez	@ 6687'
Greenhorn	@ 7015'
Graneros	@ 7051'
Two Wells	@ 7117'
Paguate	@ 7164'
Cubero	@ 7205'
Oak Canyon	@ 7302'
Encinal Cyon	@ 7323'
Burro Canyon	@ 7352'
Morrison	@ 7450'

CIBP
@ 5400'

2-3/8" 4.7# J-55
tbg @ 5050'

Model R-3 Packer
@ 5050'

Mesaverde Perfs:
20 holes
5092' to
5102'

Dakota Perfs:
12 holes
7128' to
7302'