

UNITED STATES
DEPARTMENT OF THE INTERIOR
GEOLOGICAL SURVEY

SUNDRY NOTICES AND REPORTS ON WELLS

(Do not use this form for proposals to drill or to deepen or plug back to a different formation. Use Form 9-331-C for such proposals.)

1. oil well ☐ gas well ☒ other ☐

2. NAME OF OPERATOR
Amoco Production Company

3. ADDRESS OF OPERATOR
501 Airport Drive, Farmington, NM 87401

4. LOCATION OF WELL (REPORT LOCATION CLEARLY. See space 17 below.)
AT SURFACE: 1650' FSL x 1040' FWL
AT TOP PROD. INTERVAL: Same
AT TOTAL DEPTH: Same

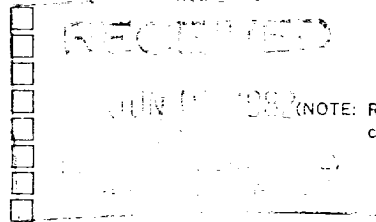
16. CHECK APPROPRIATE BOX TO INDICATE NATURE OF NOTICE REPORT, OR OTHER DATA

REQUEST FOR APPROVAL TO:

- TEST WATER SHUT-OFF ☐
FRACTURE TREAT ☐
SHOOT OR ACIDIZE ☐
REPAIR WELL ☐
PULL OR ALTER CASING ☐
MULTIPLE COMPLETE ☐
CHANGE ZONES ☐
ABANDON* ☐

SUBSEQUENT REPORT OF:

(other) Recompletion Operations



5. LEASE
Jicarilla Tribal DP #35A

6. IF INDIAN, ALLOTTEE OR TRIBE NAME
Jicarilla Apache

7. UNIT AGREEMENT NAME

8. FARM OR LEASE NAME
Jicarilla Gas Com 35-D

9. WELL NO.
1

10. FIELD OR WILDCAT NAME
Basin Dakota/Otero Gallup

11. SEC., T., R., M., OR BLK. AND SURVEY OR AREA
NW/4, SW/4 Section 12 T24N, R5W

12. COUNTY OR PARISH
Rio Arriba

13. STATE
New Mexico

14. API NO.
30-039-21994

15. ELEVATIONS (SHOW DF, KDB, AND WD)
6687' GL x 6700' KB

(NOTE: Report results of multiple completion or zone change on Form 9-330.)

17. DESCRIBE PROPOSED OR COMPLETED OPERATIONS (Clearly state all pertinent details, and give pertinent dates, including estimated date of starting any proposed work. If well is directionally drilled, give subsurface locations and measured and true vertical depths for all markers and zones pertinent to this work.)*

Recompletion operations commenced on 5-5-82. Total depth of the well is 7150' and the plugback depth is 7115'. Tripped out of hole with 2-3/8" tubing. Ran gamma ray correlation log from 6250-5600'. Set drillable bridge plug at 6090'. Perforated interval 5984-6031' with 2 SPF, a total of 94 .40" holes. Perforated intervals 5826-5836', 5842-5864', 5892-5912', 5918-5924', 5928-5934' with 2 SPF, a total of 128 .40" holes. Fraced the Gallup formation with 90,000 gallons of frac fluid and 132,500 pounds of 20-40 sand.

Landed 2-3/8" inch tubing at 7036'; packer is set at 6900 feet; set Otis plug in nipple at 6900'. Open sliding sleeve just above seating nipple and flow test the Gallup.

Released the rig on 5-15-82.

Subsurface Safety Valve: Manu. and Type _____ Set @ _____ Ft.

18. I hereby certify that the foregoing is true and correct

SIGNED _____ TITLE Adm. Supvr. DATE JUN 4 1982

(This space for Federal or State office use)

APPROVED BY _____ TITLE _____

CONDITIONS OF APPROVAL, IF ANY:

JUN 08 1982

BY [Signature]
FARMINGTON DISTRICT

*See Instructions on Reverse Side

NMOCC

