

All distances must be from the outer boundaries of the Section.

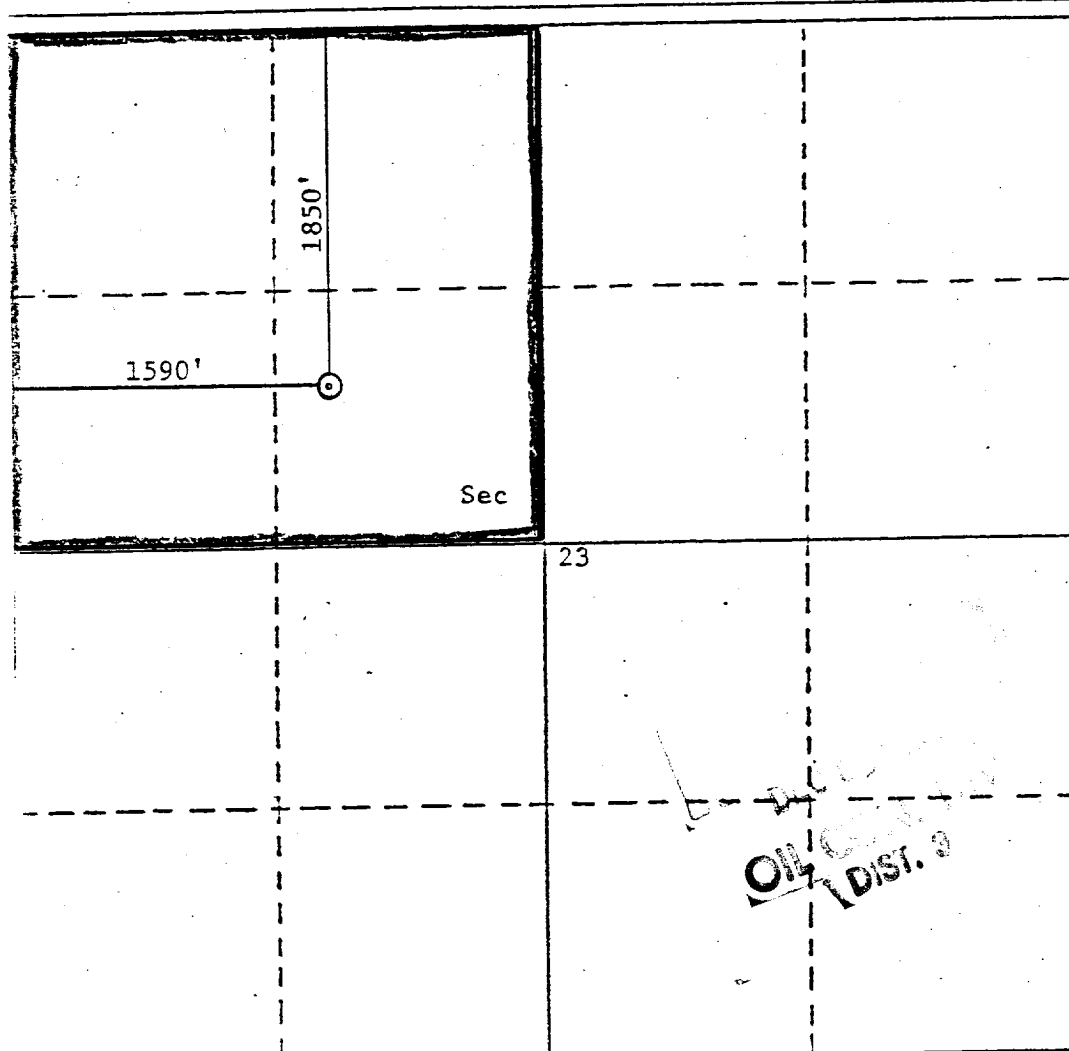
Operator AMOCO PRODUCTION COMPANY		Lease Jicarilla Contract 148		Well No. 18
Well Letter F	Section 23	Township 25N	Range 5W	County Rio Arriba
Actual Footage Location of well: 1850 feet from the North line and 1590 feet from the West line				
Ground Level Elev. 6815	Producing Formation Gallup-Dakota	Pool West Lindrith Gallup-Dakota	Dedicated Acreage: 160 Acres	

1. Outline the acreage dedicated to the subject well by colored pencil or hatchure marks on the plat below.
2. If more than one lease is dedicated to the well, outline each and identify the ownership thereof (both as to working interest and royalty).
3. If more than one lease of different ownership is dedicated to the well, have the interests of all owners been consolidated by communitization, unitization, force-pooling, etc?

☐ Yes ☐ No If answer is "yes," type of consolidation _____

If answer is "no," list the owners and tract descriptions which have actually been consolidated. (Use reverse side of this form if necessary.) _____

No allowable will be assigned to the well until all interests have been consolidated (by communitization, unitization, forced-pooling, or otherwise) or until a non-standard unit, eliminating such interests, has been approved by the Division.



CERTIFICATION

I hereby certify that the information contained herein is true and complete to the best of my knowledge and belief.

B. D. Shaw

B. D. Shaw

Adm. Supervisor

Amoco Production Co.

December 1, 1986

I hereby certify that the well location shown on this plat was plotted from field notes of actual surveys made by me or under my supervision, and that the same is true and correct to the best of my knowledge and belief.

Date Surveyed

November 30, 1978

Registered Professional Engineer
and/or Land Surveyor

Original signed by
Fred B. Kerr, Jr.

Certificate No.

3950