

UNITED STATES
DEPARTMENT OF THE INTERIOR
GEOLOGICAL SURVEY

APPLICATION FOR PERMIT TO DRILL, DEEPEN, OR PLUG BACK

1a. TYPE OF WORK DRILL ☒ DEEPEN ☐ PLUG BACK ☐

b. TYPE OF WELL
OIL WELL ☒ GAS WELL ☐ OTHER ☐ SINGLE ZONE ☒ MULTIPLE ZONE ☐

2. NAME OF OPERATOR ARCO Oil and Gas Company
Division of Atlantic Richfield Company

3. ADDRESS OF OPERATOR Suite 501
1860 Lincoln Street, Denver, Colorado 80295

4. LOCATION OF WELL (Report location clearly and in accordance with any State requirements.)*
At surface
1850' FNL & 1850' FEL Section 20 (SW NE) (Unit G)
At proposed prod. zone
Approximately Same

14. DISTANCE IN MILES AND DIRECTION FROM NEAREST TOWN OR POST OFFICE*
See attached NTL-6

15. DISTANCE FROM PROPOSED* LOCATION TO NEAREST PROPERTY OR LEASE LINE, FT. (Also to nearest drlg. unit line, if any) 1850' f/lse. line

16. NO. OF ACRES IN LEASE 400

17. NO. OF ACRES ASSIGNED TO THIS WELL 160

18. DISTANCE FROM PROPOSED LOCATION* TO NEAREST WELL, DRILLING, COMPLETED OR APPLIED FOR, ON THIS LEASE, FT. approx. 1200' f/well in NE/4

19. PROPOSED DEPTH 7675'

20. ROTARY OR CABLE TOOLS Rotary

21. ELEVATIONS (Show whether DF, RT, GR, etc.) 69021 GL (Ungraded)

22. APPROX. DATE WORK WILL START* Dirtwork when app'd. appl. received.

23. PROPOSED CASING AND CEMENTING PROGRAM

SIZE OF HOLE	SIZE OF CASING	WEIGHT PER FOOT	SETTING DEPTH	QUANTITY OF CEMENT
12 1/4"	8-5/8"	24#	300'	300 sx.
7-7/8"	5-1/2"	15.5 & 17#	7575' (TD)	500 sx.

Propose to drill well to a depth sufficient to test the Dakota Formation, setting surface casing as above. If productive, set production casing, perforate, test and treat if necessary.

Pursuant to NTL-6 attached are: Certified Location Plat
Drilling Plan with attachment
Surface Use and Operations Plan with attachments.

IN ABOVE SPACE DESCRIBE PROPOSED PROGRAM: If proposal is to deepen or plug back, give data on present productive zone and proposed new productive zone. If proposal is to drill or deepen directionally, give pertinent data on subsurface locations and measured and true depths. Give blowout preventer program, if any.

24.

SIGNED

TITLE

Operations Manager

DATE 8-9-79

(This space for Federal or State office use)

PERMIT NO.

APPROVAL DATE

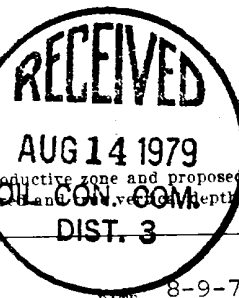
APPROVED BY

TITLE

DATE

CONDITIONS OF APPROVAL, IF ANY:

AUG 13 1979

U. S. GEOLOGICAL SURVEY
DURANGO, COLO.

NEW MEXICO OIL CONSERVATION COMMISSION
WELL LOCATION AND ACREAGE DEDICATION PLAT

Form C-102
Supersedes C-128
Effective 1-1-65

All distances must be from the outer boundaries of the Section.

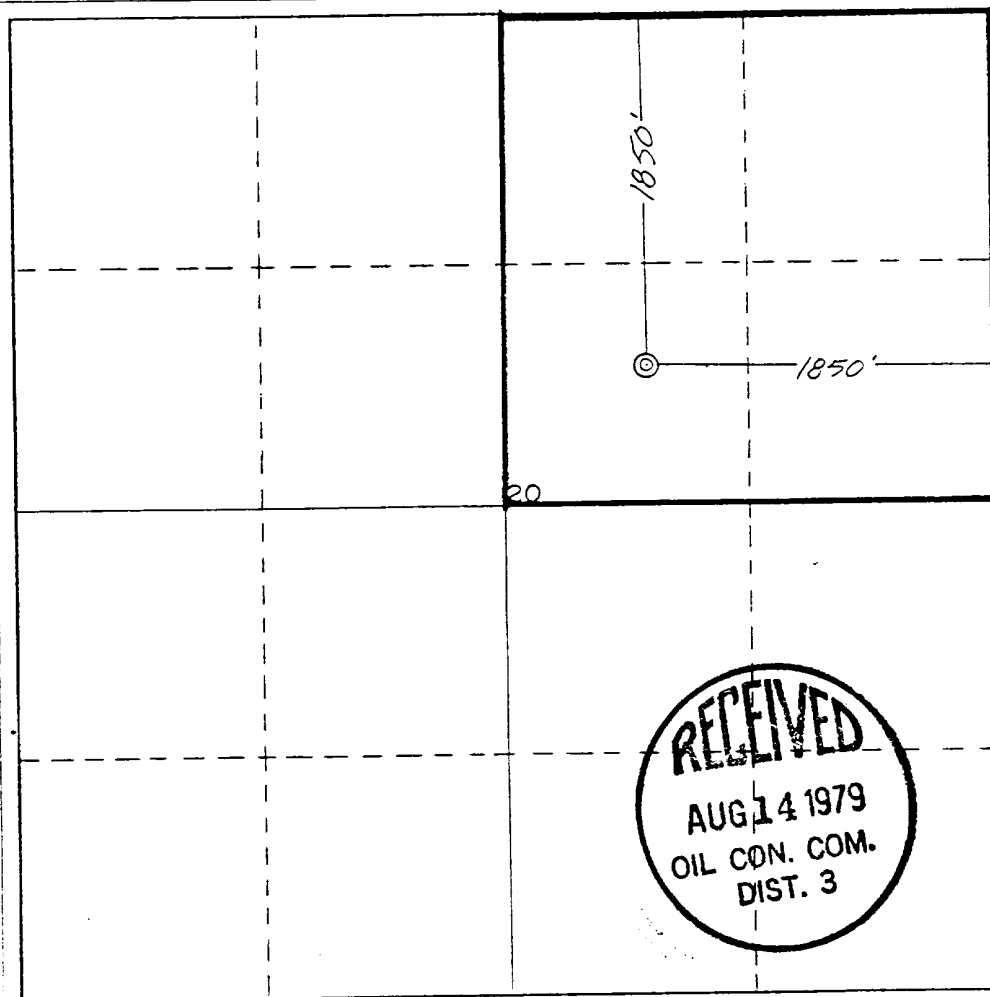
Operator ARCO OIL AND GAS COMPANY			Lease CHACON HILL		Well No. #2
Unit Letter G	Section 20	Township 24 NORTH	Range 3 WEST	County RIO ARriba	
Actual Footage Location of Well: 1850 feet from the NORTH line and 1850 feet from the EAST line					
Ground Level Elev. 6902	Producing Formation Dakota		Pool Chacon Dakota		Dedicated Acreage: 160 Acres

- Outline the acreage dedicated to the subject well by colored pencil or hatchure marks on the plat below.
N/A
- If more than one lease is dedicated to the well, outline each and identify the ownership thereof (both as to working interest and royalty).
N/A
- If more than one lease of different ownership is dedicated to the well, have the interests of all owners been consolidated by communitization, unitization, force-pooling, etc? N/A

☐ Yes ☐ No If answer is "yes," type of consolidation _____

If answer is "no," list the owners and tract descriptions which have actually been consolidated. (Use reverse side of this form if necessary.) _____

No allowable will be assigned to the well until all interests have been consolidated (by communitization, unitization, forced-pooling, or otherwise) or until a non-standard unit, eliminating such interests, has been approved by the Commission.



CERTIFICATION

I hereby certify that the information contained herein is true and complete to the best of my knowledge and belief.

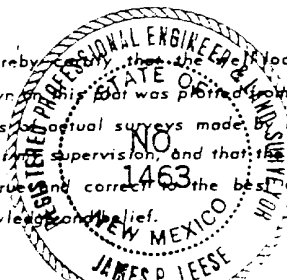
W. A. Walther, Jr.
Name
W. A. Walther, Jr.

Position
Operations Manager

Company **ARCO Oil and Gas Co.**
Division of Atlantic Rich

Date **field Company**
August 10, 1979

I hereby certify that the well location shown on this plat was plotted from field notes of actual surveys made by me or under my supervision, and that the same is true and correct to the best of my knowledge and belief.



July 19, 1979

Date Surveyed

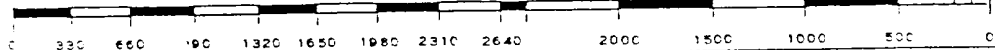
JAMES P. LEESE

Registered Professional Engineer
and Land Surveyor

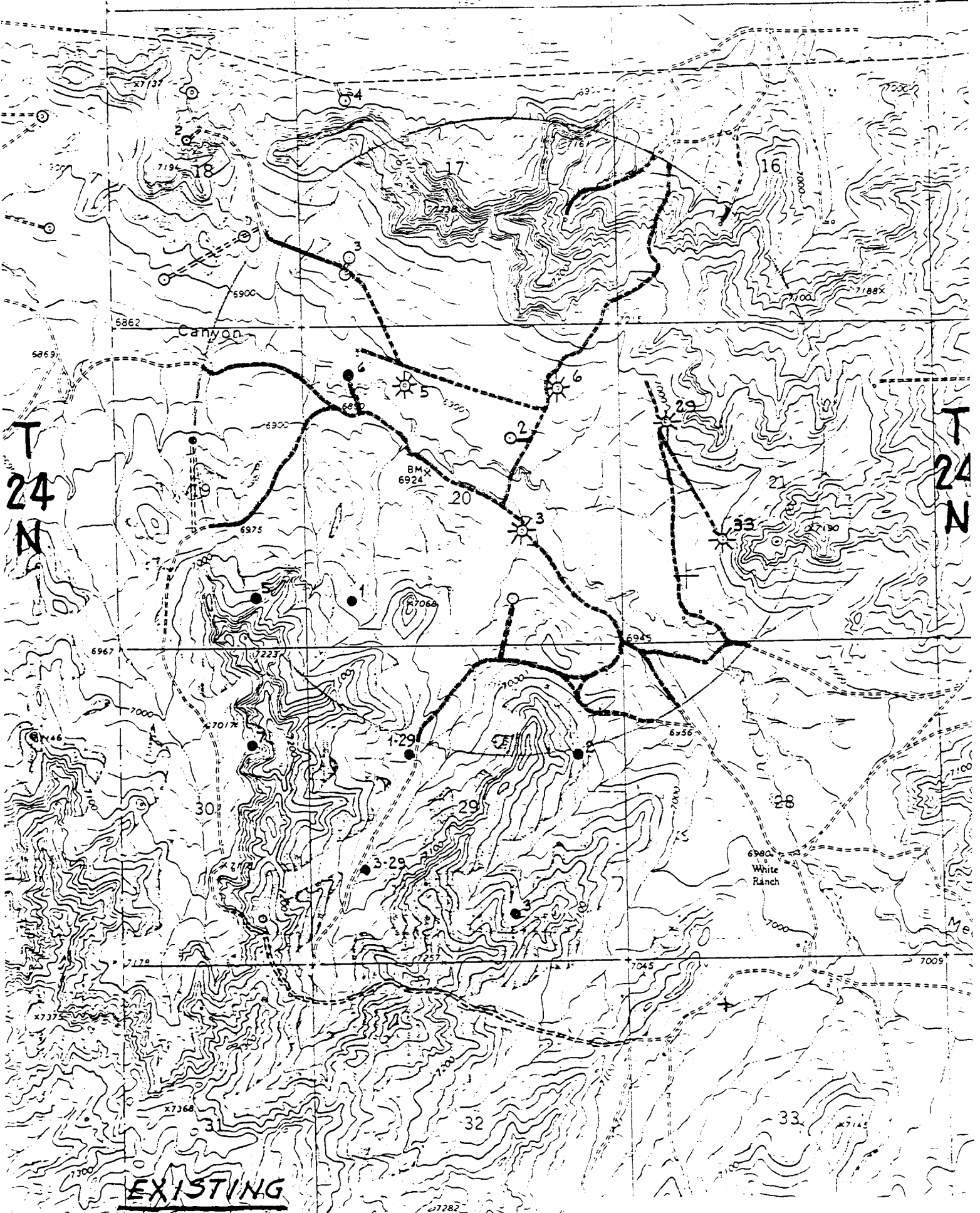
James P. Leese

Certificate No.

1463



R 3 W



EXISTING
ROADS

R 3 W

CHACON HILL, No. 2
RIO ARRIBA COUNTY, N.M.