

UNITED STATES
DEPARTMENT OF THE INTERIOR
GEOLOGICAL SURVEY

APPLICATION FOR PERMIT TO DRILL, DEEPEN, OR PLUG BACK

1a. TYPE OF WORK

DRILL ☒DEEPEN ☐PLUG BACK ☐

b. TYPE OF WELL

OIL
WELL ☐GAS
WELL ☒

OTHER

SINGLE
ZONE ☐MULTIPLE
ZONE ☐

2. NAME OF OPERATOR

Kenai Oil & Gas Inc.

3. ADDRESS OF OPERATOR

2000 Energy Center One 717-17th St. Denver, Colo.

4. LOCATION OF WELL (Report location clearly and in accordance with any State requirements.)*

At surface

1190 ENL, 800 FEL

At proposed prod. zone

14. DISTANCE IN MILES AND DIRECTION FROM NEAREST TOWN OR POST OFFICE*

6 miles NW of Lindrith

15. DISTANCE FROM PROPOSED*

LOCATION TO NEAREST

PROPERTY OR LEASE LINE, FT.

(Also to nearest drig. unit line, if any)

800

16. NO. OF ACRES IN LEASE

18. DISTANCE FROM PROPOSED LOCATION*

TO NEAREST WELL, DRILLING, COMPLETED,
OR APPLIED FOR, ON THIS LEASE, FT.

None

19. PROPOSED DEPTH

3600

17. NO. OF ACRES ASSIGNED

TO THIS WELL

160

20. ROTARY OR CABLE TOOLS

Rotary

21. ELEVATIONS (Show whether DF, RT, GR, etc.)

7121 G.L.

22. APPROX. DATE WORK WILL START*

23.

PROPOSED CASING AND CEMENTING PROGRAM

SIZE OF HOLE	SIZE OF CASING	WEIGHT PER FOOT	SETTING DEPTH	QUANTITY OF CEMENT
12 1/4"	8 5/8"	24#	200'	150 Sx-Circ to surface
6 1/2"	4.500"	9.5#	3600'	200 Sx

Selectively perforate and sandwater fracture the Pictured Cliff.

A 3000 psi WP and 6000 psi test double gate preventer equipped with
blind and pipe rams will be used for blow out prevention.

Gas is dedicated

The NE 1/4 is dedicated to this well.

IN ABOVE SPACE DESCRIBE PROPOSED PROGRAM: If proposal is to deepen or plug back, give data on present productive zone and proposed new productive zone. If proposal is to drill or deepen directionally, give pertinent data on subsurface locations and measured and true vertical depths. Give blowout preventer program, if any.

24.

SIGNED

TITLE Agent

DATE July 27, 1979

(This space for Federal or State office use)

PERMIT NO.

APPROVAL DATE

APPROVED BY

TITLE

DATE

CONDITIONS OF APPROVAL, IF ANY:

*See Instructions On Reverse Side

NEW MEXICO OIL CONSERVATION COMMISSION
WELL LOCATION AND ACREAGE DEDICATION PLAT

Form C-102
Supersedes C-128
Effective 1-1-65

All distances must be from the outer boundaries of the Section.

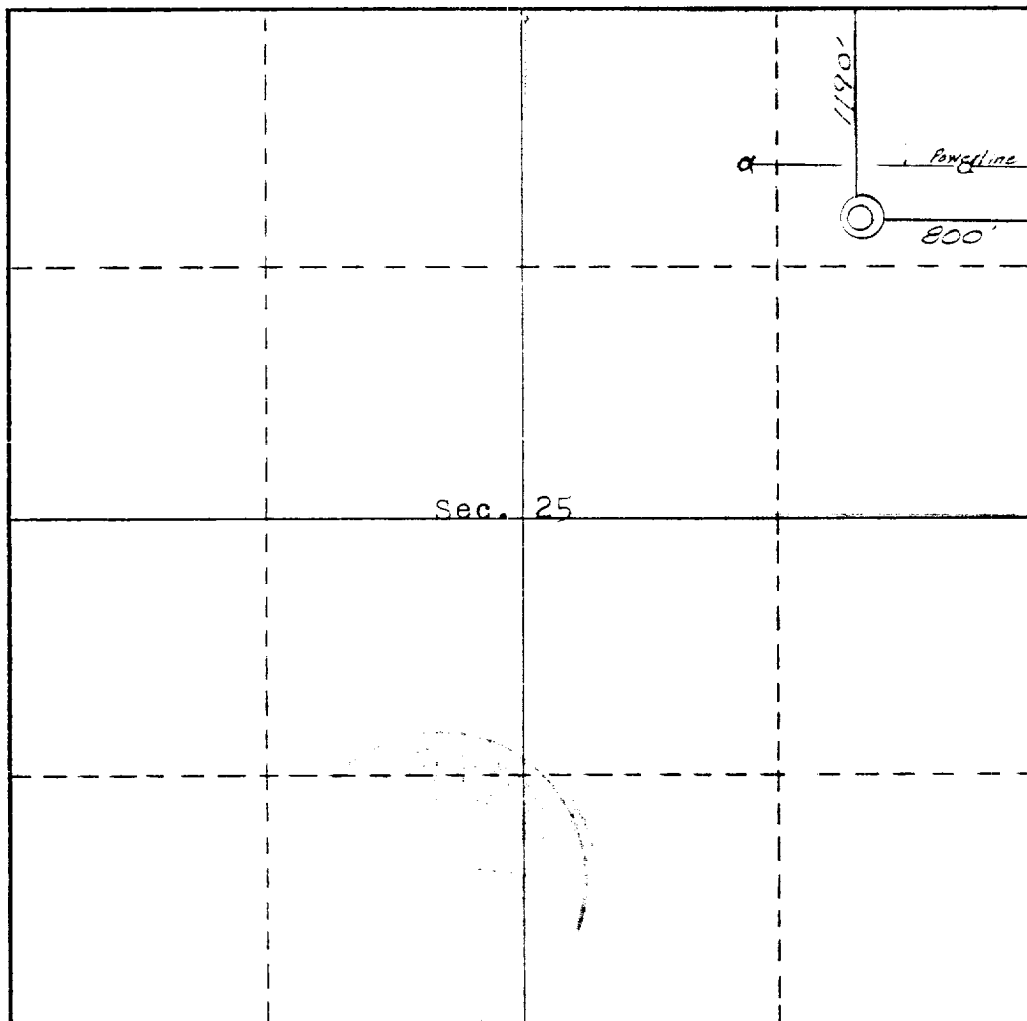
Operator KENAI OIL & GAS, INC.			Lease FEDERAL 31		Well No. 31-25
Unit Letter A	Section 25	Township 25 NORTH	Range 3 WEST	County RIO ARriba	
Actual Footage Location of Well: 1190 feet from the NORTH line and 800 feet from the EAST line					
Ground Level Elev. 7121.0	Producing Formation SOUTH BLANCO		Pool P.C.	Dedicated Acreage: 160 Acres	

1. Outline the acreage dedicated to the subject well by colored pencil or hachure marks on the plat below.
2. If more than one lease is dedicated to the well, outline each and identify the ownership thereof (both as to working interest and royalty).
3. If more than one lease of different ownership is dedicated to the well, have the interests of all owners been consolidated by communitization, unitization, force-pooling, etc?

☐ Yes ☐ No If answer is "yes," type of consolidation _____

If answer is "no," list the owners and tract descriptions which have actually been consolidated. (Use reverse side of this form if necessary.) _____

No allowable will be assigned to the well until all interests have been consolidated (by communitization, unitization, forced-pooling, or otherwise) or until a non-standard unit, eliminating such interests, has been approved by the Commission.



CERTIFICATION

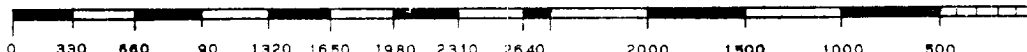
I hereby certify that the information contained herein is true and complete to the best of my knowledge and belief.

Name Harold W. Sledge
Position Agent
Company Kenai Oil & Gas Inc.
Date Aug. 13, 1977

I hereby certify that the well location shown on this plat was plotted from field notes of actual surveys made by me or under my supervision, and that the same is true and correct to the best of my knowledge and belief.

Date Surveyed Aug 13, 1977
Registered Professional Engineer and/or Land Surveyor Curtis C. Stocking

Certificate No. N. Mex. Reg. No. 5980



July 12, 1979

Operations Plan
Federal 31-25

I. Location: NWNE Section 25, T25N, R3W
Field: South Blanco Pictured Cliffs
Elevation: 7118' G.L.

II. Geology:

A. Formation Tops: Kirtland 3347
Pictured Cliffs 3497
Total Depth 3600
B. Logging Program: I-ES and Gamma-Ray-Density Logs
C. Coring Program: None

III. Drilling:

A. Mud Program: Low solids mud surface to TD.

IV. Materials:

A. Casing Program:	<u>Hole Size</u>	<u>Depth</u>	<u>Casing Size</u>	<u>Wt. & Grade</u>
	12 $\frac{1}{4}$	200	8 5/8	24# H-40
	6 $\frac{1}{4}$	3600	4 $\frac{1}{2}$	9.5# K-55

B. Float Equipment: 8 5/8" shoe, and 2 centralizers
4 $\frac{1}{2}$ " shoe, float collar and 6 centralizers
C. Tubing: 2 3/8" 4.7# EUE to midpoint of perforated interval.

D. Wellhead Equipment Series 600 flanged, donut type hanger.

V. Cementing: 8 5/8" surface casing; use 150 sx Class "B" cement with 3% calcium chloride, 1/4#/sx celotake and circulate to surface. WOC 12 hours. Before drilling out, test BOP and surface pipe to 500 psi for 1/2 hour.
4 $\frac{1}{2}$ " long string; Cement with 200 sx 50/50 Pozmix containing 10% salt and 2% gel. Proceed cement with 30 bbls gelled water. Set slips with weight of string or slips.

Multi-Point Surface Use Plan

Kenai Oil & Gas Inc.

Federal 31-25

NE/4 NE/4 Section 25, T25N, R3W

Rio Arriba County, New Mexico

1. Existing Roads

Refer to Map which shows the existing roads. New roads which will be required have been marked on this map. All existing and new roads will be properly maintained during this period.
2. Planned Access Roads

The grade of the access roads will be consistent with that of the local terrain. The road surface will not exceed 20 feet (20') in width. Upon completion all roads will be adequately drained to control said erosion. Drainage facilities may include ditches, water bars, culverts or other measures necessary to insure proper drainage.
3. Location of Existing Wells

See attached map.
4. Location of Tank Batteries, Production Facilities, and Production Gathering and Service Lines

If this well is productive, it would be gas. The facilities would be a wellhead, tanks for produced condensate (if any) separator and gas line to the well. The tanks and separator would be set 150' from the wellhead and production lines will be buried across the location.
5. Location and Type of Water Supply

No arrangement for water has been made at this time.
6. Source of Construction Materials

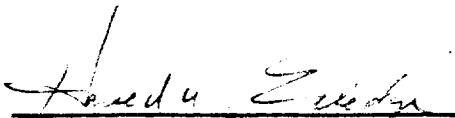
All construction material will be purchased and hauled to the location. No additional materials will be required.
7. Methods of Handling Waste Materials
 - a. Cuttings will be buried 3' below surface.
 - b. Drilling fluid will be left in a fenced, open pit to evaporate.
 - c. Portable toilet to be provided.
 - d. Trash will be burned in burn pit then buried.
 - e. After pit area is dry, cuttings will be pushed into pit and sub soil will be placed on any remaining fluid and cutting, then top soil will be placed over both Pit and location area.

8. Ancillary Facilities No camps or airstrips will be associated with this project.
9. Well site Layout Refer to attached plat.
10. Plans for Restoration of the Surface After completion of the proposed project, the location will be cleaned and leveled. The location will be left in such a condition that will enable reseeding operations to be carried out as controlled by the regulatory body.
11. Other Information The terrain is flat grazing land covered with crested wheat.
12. Operator's Representative Elledge Consulting & Production Company
Box 819
Bloomfield, New Mexico 87413

Harold Elledge-President
Office Phone- 632-3385
Home Phone-632-8476

OR
Kenai Oil and Gas Inc.
2000 Energy Center One
717-17th Street
Denver, Colorado 80202
Phone 303-893-1142
13. Certification I hereby certify that I, or persons under my supervision, have inspected the proposed drillsite and access route; that I am familiar with the conditions which presently exist; that the statements made in this plan are, to the best of my knowledge, true and correct; and, that the work associated with the operations proposed herein will be performed by Kenai Oil and Gas Inc. and its contractors and sub-contractors in conformity with this plan and the terms and conditions under which it is approved.

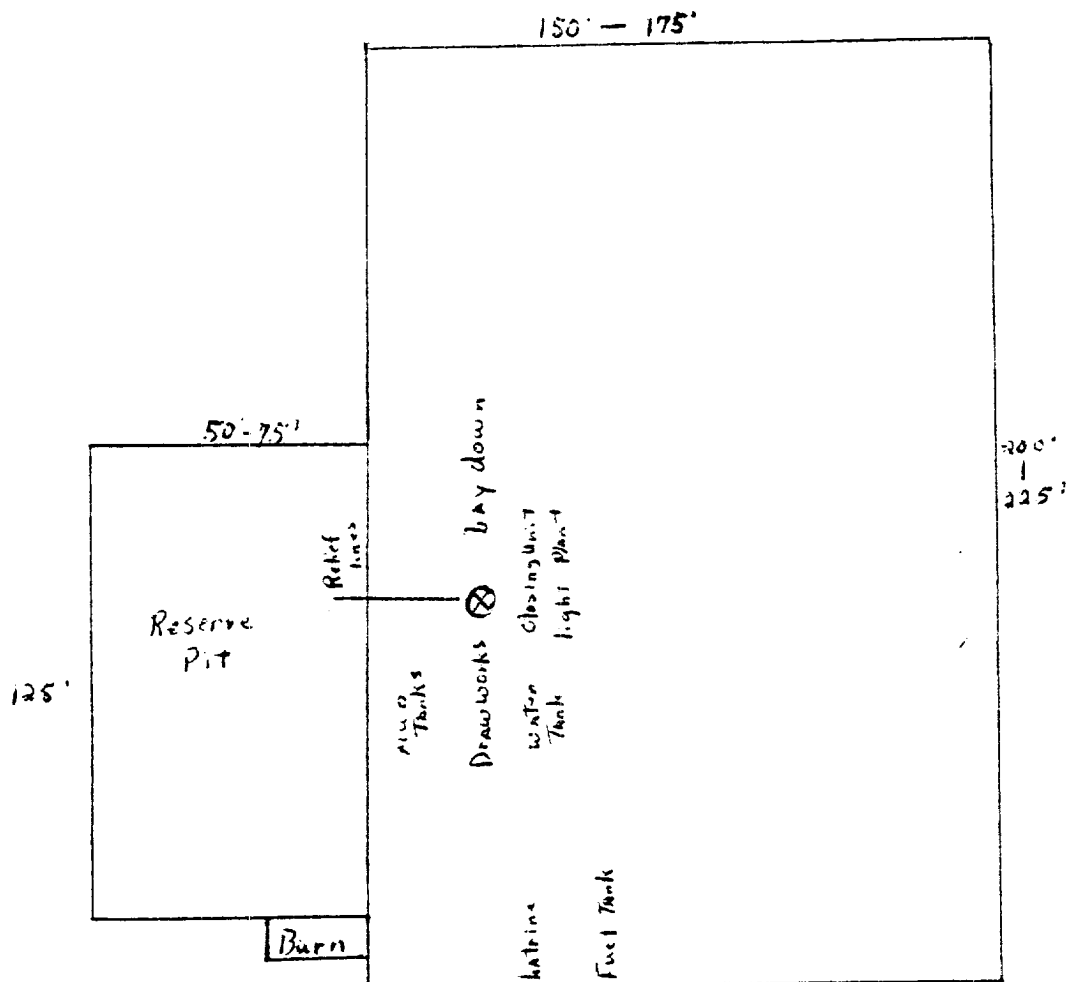
Date: July 12, 1979


Harold W. Elledge

Kenai Oil & Gas Inc.

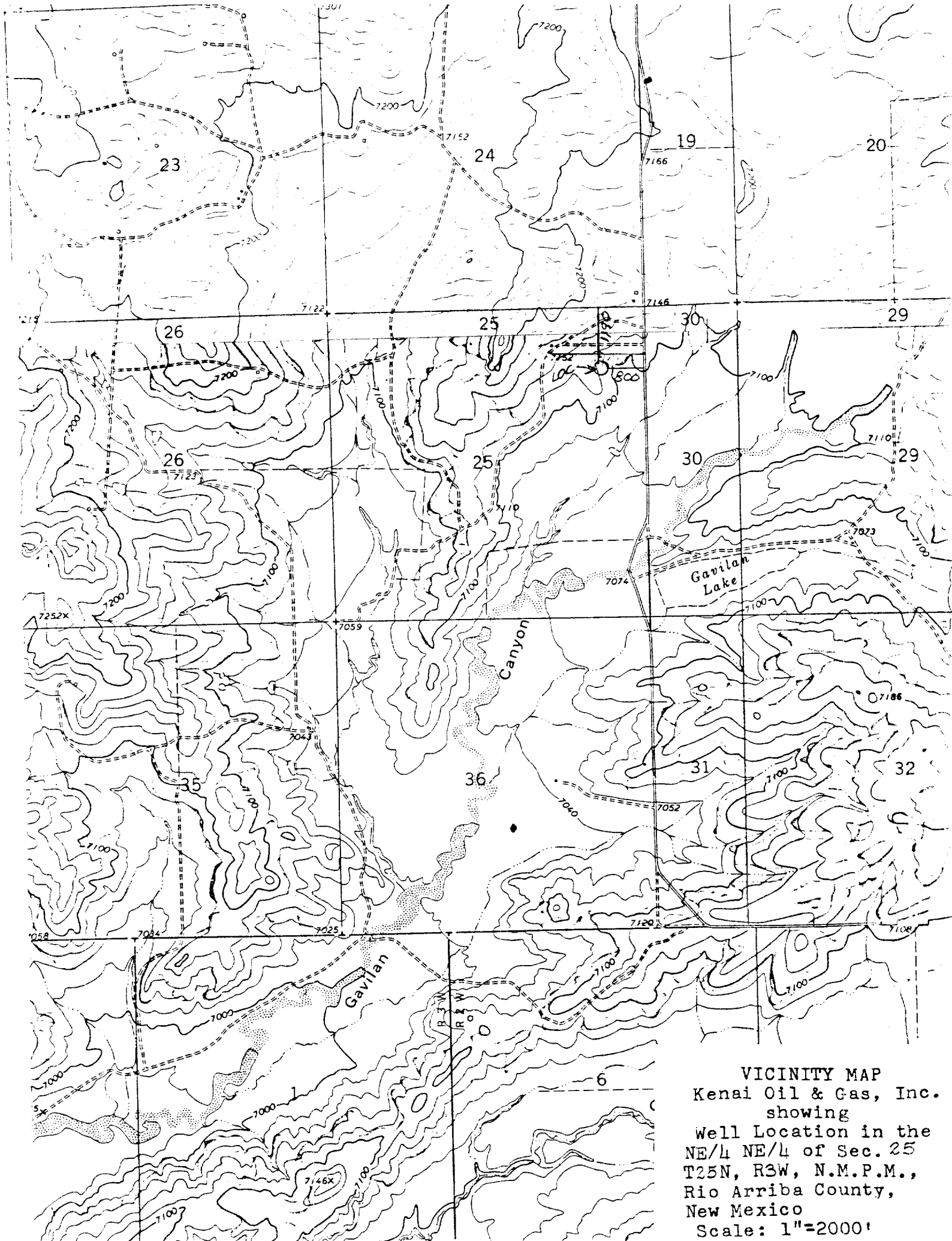
Location PIAT

Federal 31-25 (A-25-25-3)



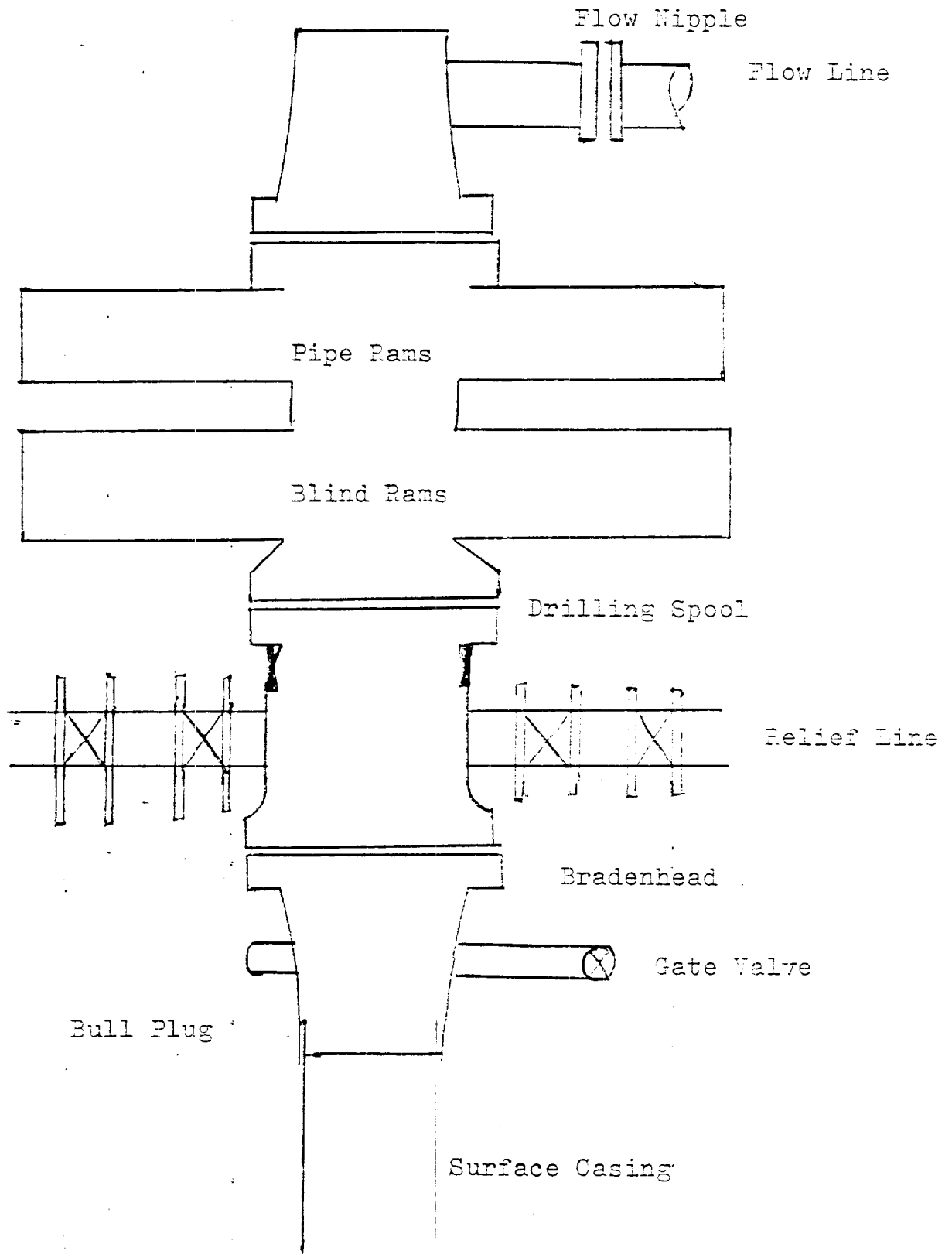
North

Power line



VICINITY MAP
Kenai Oil & Gas, Inc.
showing
Well Location in the
NE/4 NE/4 of Sec. 25
T25N, R3W, N.M.P.M.,
Rio Arriba County,
New Mexico
Scale: 1"=2000'

Typical B. O. P. Installation



Series 900 Double Gate BOP, rated
at 3000 psi Working Pressure