

UNITED STATES
DEPARTMENT OF THE INTERIOR
GEOLOGICAL SURVEY

APPLICATION FOR PERMIT TO DRILL, DEEPEN, OR PLUG BACK

1a. TYPE OF WORK

DRILL ☒DEEPEN ☐PLUG BACK ☐

b. TYPE OF WELL

OIL
WELL ☒GAS
WELL ☒

OTHER

SINGLE
ZONE ☐MULTIPLE
ZONE ☒

2. NAME OF OPERATOR

ARCO Oil and Gas Company

Division of Atlantic Richfield Company

3. ADDRESS OF OPERATOR

Suite 501

1860 Lincoln Street, Denver, Colorado 80295

4. LOCATION OF WELL (Report location clearly and in accordance with any State requirements.)*
At surface

1980' F/SL & 950' F/EL Sec. 7-24N-4W (NE, SE)

At proposed prod. zone

Same

14. DISTANCE IN MILES AND DIRECTION FROM NEAREST TOWN OR POST OFFICE*

See NTL-6

15. DISTANCE FROM PROPOSED*

LOCATION TO NEAREST
PROPERTY OR LEASE LINE, FT.
(Also to nearest drlg. unit line, if any)

1980'

16. NO. OF ACRES IN LEASE

2611.20

17. NO. OF ACRES ASSIGNED
TO THIS WELL

160

18. DISTANCE FROM PROPOSED LOCATION*

TO NEAREST WELL, DRILLING, COMPLETED, 2600'
OR APPLIED FOR, ON THIS LEASE, FT.

19. PROPOSED DEPTH

7340'

20. ROTARY OR CABLE TOOLS

Rotary

21. ELEVATIONS (Show whether DF, RT, GR, etc.)

6720' GR (Ungraded)

22. APPROX. DATE WORK WILL START*

When approved appl. rec'
from District Engineer

23.

PROPOSED CASING AND CEMENTING PROGRAM

SIZE OF HOLE	SIZE OF CASING	WEIGHT PER FOOT	SETTING DEPTH	QUANTITY OF CEMENT
12-1/4"	8-5/8" OD	24#	±300'	300 sx. (cmt. to surf)
7-7/8"	5-1/2" OD	15.5 & 17#	T. D.	550 sx.

Propose to drill well to a depth sufficient to test the Dakota Formation, setting surface casing and if productive setting production casing. If both formations are productive (Gallup and Dakota) will perforate, test and treat if necessary and commingle production.

Pursuant to NTL-6, attached are: Certified Location Plat
Drilling Plan with attachment
Surface Use and Operations Plan with attachments.

IN ABOVE SPACE DESCRIBE PROPOSED PROGRAM: If proposal is to deepen or plug back, give data on present productive zone and proposed new productive zone. If proposal is to drill or deepen directionally, give pertinent data on subsurface locations and measured and true vertical depths. Give blowout preventer program, if any.

24.

SIGNED

TITLE

Operations Manager

DATE

August 23, 1979

(This space for Federal or State office use)

PERMIT NO.

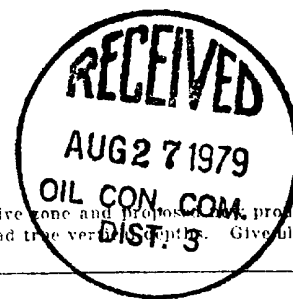
APPROVAL DATE

APPROVED BY

TITLE

DATE

CONDITIONS OF APPROVAL, IF ANY:



ok Frank

**NEW MEXICO OIL CONSERVATION COMMISSION
WELL LOCATION AND ACREAGE DEDICATION PLAT**

Form C-102
Supersedes C-128
Effective 1-1-55

All distances must be from the outer boundaries of the Section.

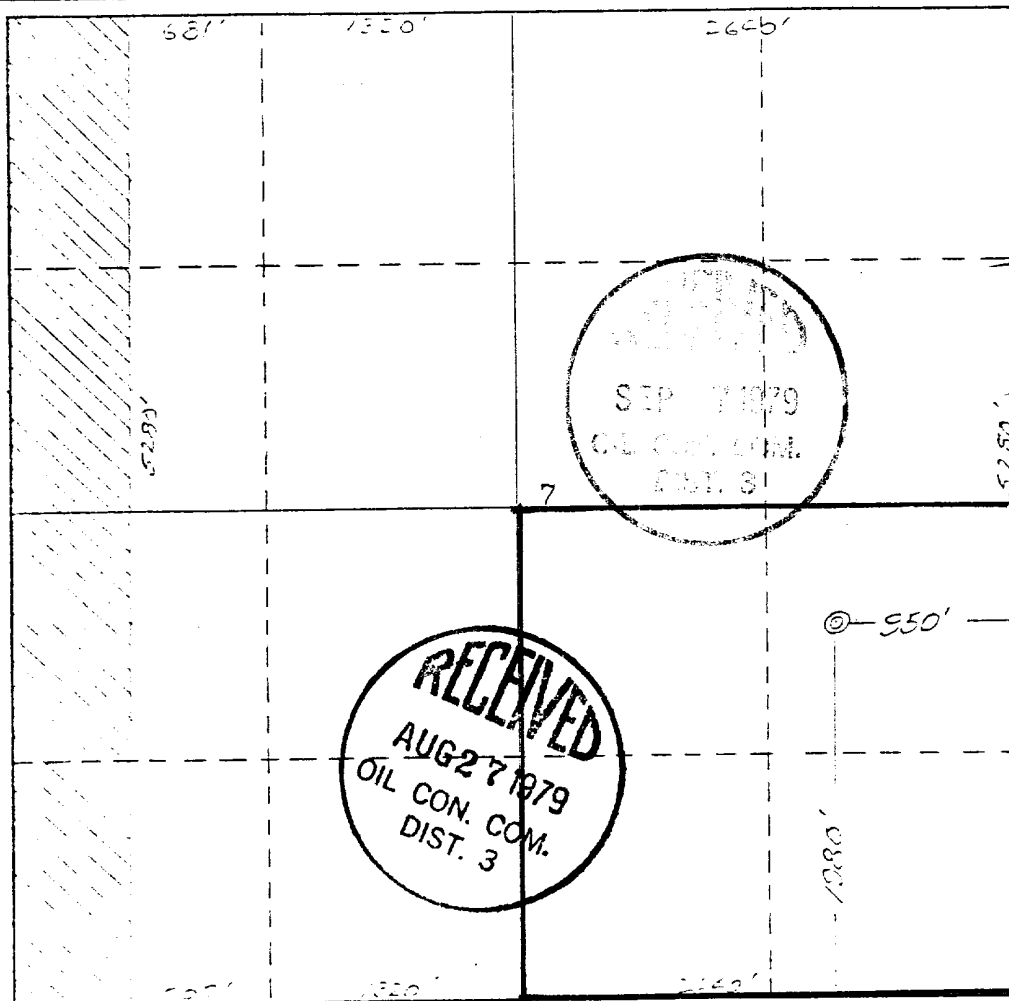
Operator: ARCO OIL AND GAS COMPANY			Lease: JICARILLA APACHE "H"		Well No. 116
Unit Letter I	Section 7	Township 24 NORTH	Range 4 WEST	County RIO ARriba	
Actual Footage Location of Well: 1980 feet from the SOUTH line and 950 feet from the EAST line					
Ground Level Elev. 6729	Producing Formation Gallup/Dakota		Pool West Lindrith Gallup/Dakota	Dedicated Acreage: 160 Acres	

1. Outline the acreage dedicated to the subject well by colored pencil or hachure marks on the plat below.
2. If more than one lease is dedicated to the well, outline each and identify the ownership thereof (both as to working interest and royalty). **N/A**
3. If more than one lease of different ownership is dedicated to the well, have the interests of all owners been consolidated by communitization, unitization, force-pooling, etc? **N/A**

☐ Yes ☐ No If answer is "yes," type of consolidation _____

If answer is "no," list the owners and tract descriptions which have actually been consolidated. (Use reverse side of this form if necessary.) _____

No allowable will be assigned to the well until all interests have been consolidated (by communitization, unitization, forced-pooling, or otherwise) or until a non-standard unit, eliminating such interests, has been approved by the Commission.

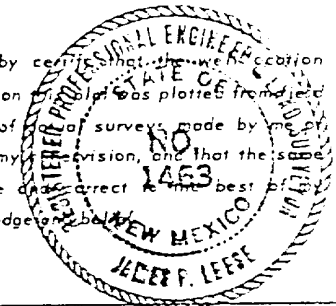


CERTIFICATION

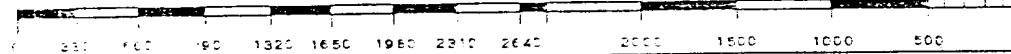
I hereby certify that the information contained herein is true and complete to the best of my knowledge and belief.

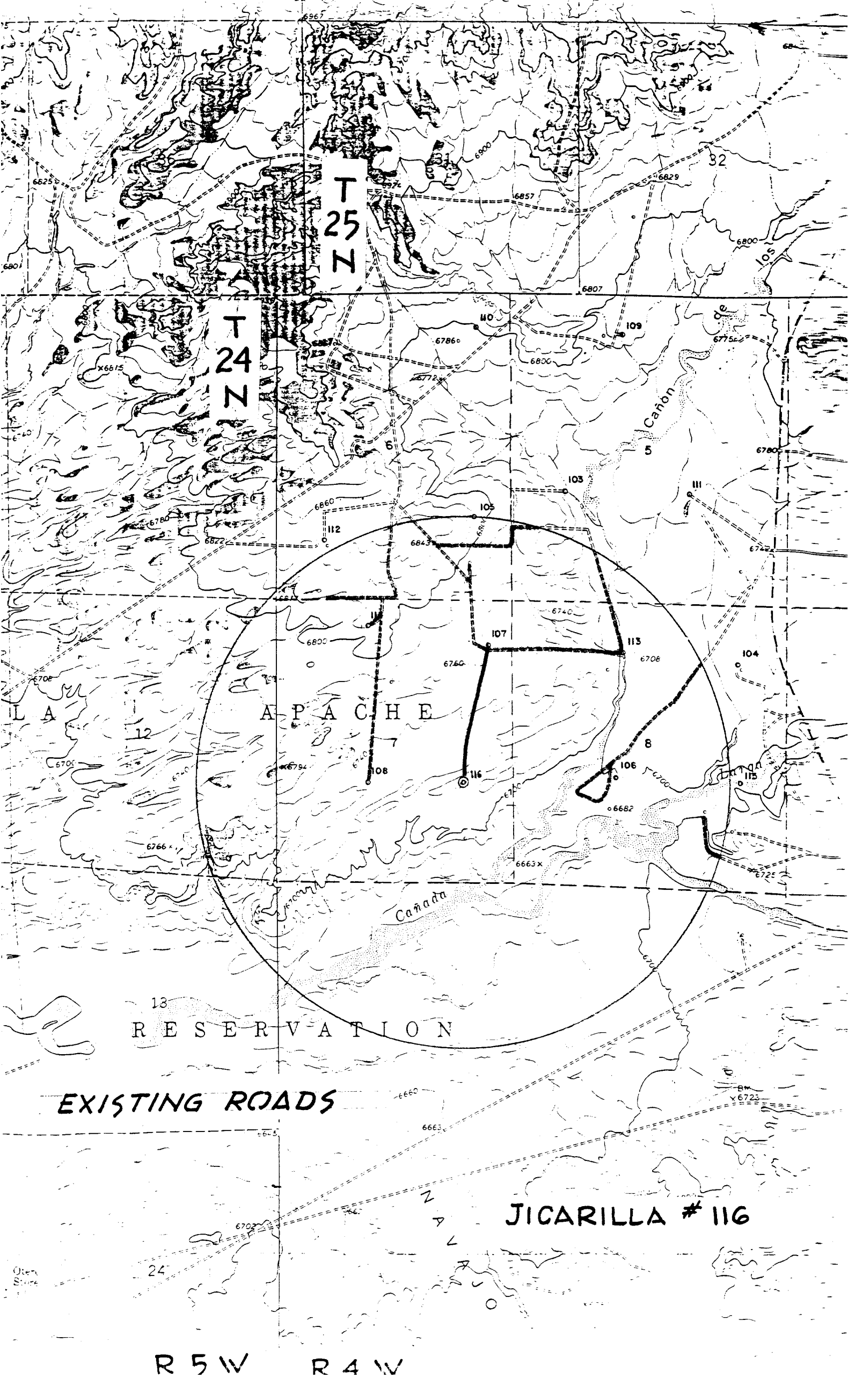
W. A. Walther, Jr.
Name
W. A. Walther, Jr.
Position
Operations Manager
Company
ARCO Oil and Gas Co.
Div. of Atlantic Richfield
Date
August 23, 1979

I hereby certify that the well location shown on this plat was plotted from field notes of a survey made by me or under my supervision, and that the same is true and correct to the best of my knowledge and belief.



Date Surveyed
5 June 1979
Registered Professional Engineer
and/or Land Surveyor
James P. Leese
James P. Leese
Certificate No.
1463





T
25
N

T
24
N

A P A C H E

13
R E S E R V A T I O N

EXISTING ROADS

JICARILLA # 116

R 5 W R 4 W