

UNITED STATES  
DEPARTMENT OF THE INTERIOR  
BUREAU OF LAND MANAGEMENT

**SUNDRY NOTICES AND REPORTS ON WELLS**

Do not use this form for proposals to drill or to deepen or reentry to a different reservoir.  
Use "APPLICATION FOR PERMIT---" for such proposals

**SUBMIT IN TRIPLICATE**

FORM APPROVED  
Budget Bureau No. 1004-0135  
Expires: March 31, 1993

5. Lease Designation and Serial No.  
Contract 111

6. If Indian, Allottee or Tribe Name  
Jicarilla

7. If Unit or CA, Agreement Designation

8. Well Name and No.

Jicarilla #113

9. API Well No.

30-039-22162

10. Field and Pool, or Exploratory Area  
W Lindrith Gallup Dakota

11. County or Parish, State  
Rio Arriba County, New Mexico

1. Type of Well

☐ Oil ☒ Gas ☐ Other

2. Name of Operator

D.J. Simmons Co.

3. Address and Telephone No.

1009 Ridgeway Place, Suite 200, Farmington NM 87401 (505) 326-3753

4. Location of Well (Footage, Sec., T., R., M., or Survey Description)

950' FNL x 1775' FWL, Section 8, T24N, R4W

12. CHECK APPROPRIATE BOX(s) TO INDICATE NATURE OF NOTICE, REPORT, OR OTHER DATA

TYPE OF SUBMISSION

☐ Notice of Intent

☒ Subsequent Report

☐ Final Abandonment Notice

TYPE OF ACTION

☒ Abandonment

☐ Recompletion

☐ Plugging Back

☐ Casing Repair

☐ Altering Casing

☐ Other

☐ Change of Plans

☐ New Construction

☐ Non-Routine Fracturing

☐ Water Shut-Off

☐ Conversion to Injection

☐ Dispose Water

(Note: Report results of multiple completion on Well Completion or Recompletion Report and Log form.)

13. Describe Proposed or Completed Operations (Clearly state all pertinent details, and give pertinent dates, including estimated date of starting any proposed work. If well is directionally drilled, give subsurface locations and measured and true vertical depth for all markers and zones pertinent to this work.)\*

D. J. Simmons Inc., has plugged and abandoned this well as of 05/09/02. The attached reports describe the plugging and abandonment work. The dry hole marker has been installed. The location will be re-contoured and reseeded as per BLM stipulations.

14. I hereby certify that the foregoing is true and correct

Signed Robert R. Griffie  
Robert R. Griffie

Title Operations Engineer

Date: 05/20/02

(This space for Federal or State office use)

/s/ Patricia M. Hester

Approved by

Title

Lands and Mineral Resources

Date

JUN 3 2002

Conditions of approval, if any:

Title 18 U.S.C. Section 1001, makes it a crime for any person knowingly and willfully to make to any department or agency of the United States any false, fictitious or fraudulent statements or representations as to any matter within its jurisdiction.

\*See Instruction on Reverse Side

---

# D.J. SIMMONS, INC.

## Jicarilla H 113 Workover Reports

4/25/02

Road DJS Rig 111 to location. MIRU. Open well, well on vacuum. NU BOPE. RU floor. SDFN.

04/26/02

RU Blue Jet. Ran gage ring to 6096'. Ran casing inspection log. Found casing parted at 4458' and 2782'. Ran CBL. RD Blue Jet. SDFN.

04/29/02

Open well, still on vacuum. PU bit and 2 3/8" tbg, TIH. Tag fill at 6100'. Circulate down through fill, RU power swivel. Clean out to 6361'. Circulate casing clean. TOH 30 stands. SDFN.

04/30/02

TIH, no fill. TOH and lay down bit. RU Blue Jet. Set wireline-set CIBP at 6330'. TIH with 2 3/8" tbg, tag plug. Spot 6 sks Class 'b' cement on top of CIBP. TOH. Set wireline-set cement retainer at 5910'. TIH with 30 stands 2 3/8" tubing and stinger. SDFN.

05/01/02

Continue TIH with stinger. Circulate down to retainer, stinger stuck in top of retainer, pressured up to 1000 psi and held. Try to work stinger loose, no success. RU Wireline Specialties. Free point pipe, 100% free at 5900'. Shoot hole in tubing at 5903, attempt to circulate, pressured up to 1000 psi. Jet cut tubing at 5890'. RD Wireline. Pull up 2 stands tubing, pipe free. Receive approval from Charlie Perrin, NMOCD and Terrence Muniz, BLM/Jicarilla to alter procedure and spot 100 ft plug on top of retainer. Spot 25 sks, class 'b' cement plug from 5880' – 5710'. POOH with tbg. SDFN.

05/02/02

RU Blue Jet. Perforate 2 squeeze holes at 5190' and 2 squeeze holes at 4300'. TIH with packer and 2 3/8" tubing. Set packer at 4400'. Establish circulation through squeeze holes back to surface, 3 bpm at 900 psi. Release packer and TOH. Set wireline-set cement retainer at 4400'. TIH with stinger and tubing. Sting into retainer. Pump 310 sks class 'b' below retainer at 3 bpm and 900 psi. Cut displacement short 2 bbls, sting out, and spot 10 sks cement on top of retainer. Had good circulation for first 200 sks, then lost circulation. TOH and lay down 2000' of tubing. Perforate 2 squeeze holes at 2310'. Attempt to circulate down casing through squeeze holes, establish rate of 1.3 bpm at 1000 psi. Did not circulate to surface. PU packer and TIH on tubing. Set packer at 2201'. Establish injection rate of 1.3 bpm at 1500 psi. Squeeze under packer with 80 sks of class 'b' cement, placed 45 sacks into perforations. Pressure went to 2000 psi and locked up. Open packer bypass and reverse out cement. Release packer and reverse out. Re-set packer and pressured up to 1000 psi. SDFN.

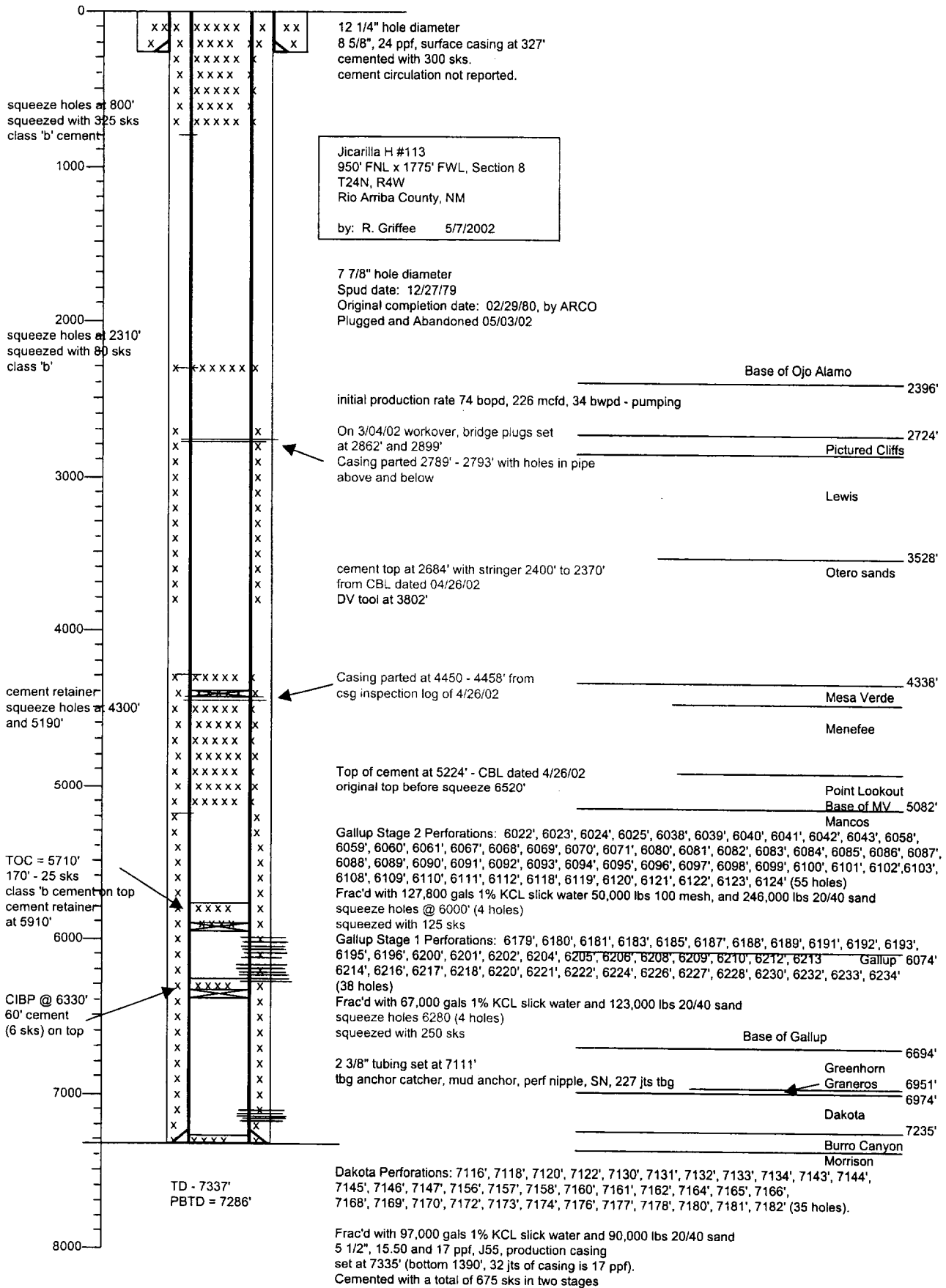
05/03/02

Open well. Release packer and TOH. LD packer. RU Blue Jet. Perforate 2 squeeze holes at 2100'. Attempt to establish injection rate, pressured up to 2000 psi and held. Bleed off pressure. Perforate 2 squeeze holes at 1500'. Attempt to establish injection rate, pressured up to 2000 psi and held. Bleed off pressure. Perforate 2 squeeze holes at 800'. Established circulation through squeeze holes back through braden head to surface. Receive approval from Denny Foust, NMOCD and Terrence Muniz, BLM/Jicarilla to alter procedure and set plug 800' to surface. TIH with 2 3/8" tubing and tagged plug at 2220'. Spot 15 sk class 'b' balanced cement plug from 2220' – 2120'. TOH and lay down tubing. Pump down casing and re-establish circulation through squeeze holes at 800'. Pump 325 sks class 'b' down casing, through squeeze holes, and up casing/hole annulus through Braden head. Release rig. Will cut off well head and install dry hole marker after rig move.

5/09/02

Cut off well head. Weld on dry hole marker.

Elevations: 6705' GL, 6719' RKB



## BLM CONDITIONS OF APPROVAL

The following surface rehabilitation Conditions of Approval must be complied with as applicable, before this well can be approved for final abandonment (see 43 CFR 3162.3-4). Surface rehabilitation work shall be completed within one year of the actual plugging date. Notification for completion of this work should be submitted with a Sundry Notice. Questions? Call Pat Hester at (505) 761-8786.

1. All fences, production equipment, purchaser's equipment, concrete slabs, deadman (anchors), flowlines, risers, debris and trash must be removed from the location. Non-retrieved flowlines and pipelines will be abandoned in accordance with State Rule 714. Information supporting the non-retrieval will be included in the subsequent report or final abandonment Sundry Notice.

2. Production pits will be closed according to the Unlined Surface Impoundment Closure Guidelines, as approved in the Environmental Assessment of December 1993. Any oil stained soils can be remediated on-site according to these guidelines or disposed of in an approved facility.

3. The well pad will be shaped to the natural terrain and left as rough as possible. All compacted areas and areas devoid of vegetation shall be ripped/disked to a minimum of 12" in depth before reseeding.

4. Access roads will be shaped to conform to the natural terrain and left as rough as possible to deter vehicle travel. Access will be ripped to a minimum of 12" in depth, water barred and reseeded. All erosion problems created by the development must be corrected prior to acceptance of release. Water bars should be spaced as shown below along the fall line of the slope:

% Slope	Spacing Interval
Less than 20%	200'
2 to 5 %	150'
6 to 9 %	100'
10 to 15 %	50'
Greater than 15%	30'

5. All disturbed areas will be seeded with the prescribed certified seed mix (reseeding may be required). Seed mix must be certified weed free to avoid the introduction of noxious weeds. Refer to the original APD for seed mix.

6. Notify Surface Managing Agency seven (7) days prior to seeding so that they may be present to witness.

7. The period of liability under the bond of record will not be terminated until the well is inspected and the surface rehabilitation approved.

Other Surface Managing Agencies (SMA's) may vary slightly in their restoration requirements. It is your responsibility, as the operator, to obtain surface restoration requirements from other SMA's. We need to be provided with a copy of these requirements. Any problems concerning stipulations received from other SMA's should be brought to us. On private land, a letter from the fee owner stating that the surface restoration is satisfactory will be provided to the office. Questions? Call Pat Hester at (505) 761-8786.