

UNITED STATES
DEPARTMENT OF THE INTERIOR
GEOLOGICAL SURVEY

30-039-22167

APPLICATION FOR PERMIT TO DRILL, DEEPEN, OR PLUG BACK

1a. TYPE OF WORK

DRILL ☒

DEEPEN ☐

PLUG BACK ☐

b. TYPE OF WELL

OIL
WELL ☐

GAS
WELL ☒

OTHER

SINGLE
ZONE ☐

MULTIPLE
ZONE ☐

2. NAME OF OPERATOR

Dugan Production Corp.

3. ADDRESS OF OPERATOR

Box 208, Farmington, NM 87401

4. LOCATION OF WELL (Report location clearly and in accordance with any State requirements.)*

At surface

880' FSL - 1800' FWL

At proposed prod. zone

14. DISTANCE IN MILES AND DIRECTION FROM NEAREST TOWN OR POST OFFICE*

3 miles northeast of Regina, NM

15. DISTANCE FROM PROPOSED*

LOCATION TO NEAREST
PROPERTY OR LEASE LINE, FT.
(Also to nearest drlg. unit line, if any)

880'

16. NO. OF ACRES IN LEASE

160

17. NO. OF ACRES ASSIGNED
TO THIS WELL

160

18. DISTANCE FROM PROPOSED LOCATION*

TO NEAREST WELL, DRILLING, COMPLETED,
OR APPLIED FOR, ON THIS LEASE, FT.

900'

19. PROPOSED DEPTH

3200'

20. ROTARY OR CABLE TOOLS

Rotary

21. ELEVATIONS (Show whether DF, RT, GR, etc.)

7378' GR

22. APPROX. DATE WORK WILL START*

September 30, 1979

23.

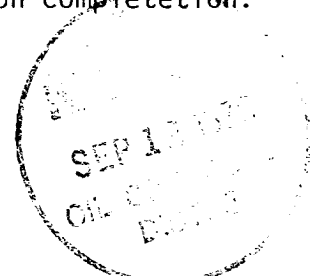
PROPOSED CASING AND CEMENTING PROGRAM

SIZE OF HOLE	SIZE OF CASING	WEIGHT PER FOOT	SETTING DEPTH	QUANTITY OF CEMENT
12-1/2"	8-5/8"	24#	200'	135 sx
7-7/8"	4-1/2"	10.5#	3200'	225 sx

Drill well with mud to test Pictured Cliffs formation. Set 4-1/2" casing thru Pictured Cliffs formation, selectively perforate, sand-water frac, clean out after frac, run 1-1/4" tbg and complete well.

Will use non-flanged wellheads w/2000 psi WP, hydraulic BOP furnished by drilling contractor while drilling, and a manual double gate BOP on completion.

NMERB: Gas not dedicated.



IN ABOVE SPACE DESCRIBE PROPOSED PROGRAM: If proposal is to deepen or plug back, give data on present productive zone and proposed new productive zone. If proposal is to drill or deepen directionally, give pertinent data on subsurface locations and measured and true vertical depths. Give blowout preventer program, if any.

24.

SIGNED

Richard Tully
Richard Tully

TITLE

Landman

DATE

9-7-79

(This space for Federal or State office use)

PERMIT NO.

APPROVAL DATE

APPROVED BY

TITLE

DATE

CONDITIONS OF APPROVAL, IF ANY:

OK Frank

*See Instructions On Reverse Side

**NEW MEXICO OIL CONSERVATION COMMISSION
WELL LOCATION AND ACREAGE DEDICATION PLAT**

Form C-102
Supersedes C-128
Effective 1-1-65

All distances must be from the outer boundaries of the Section.

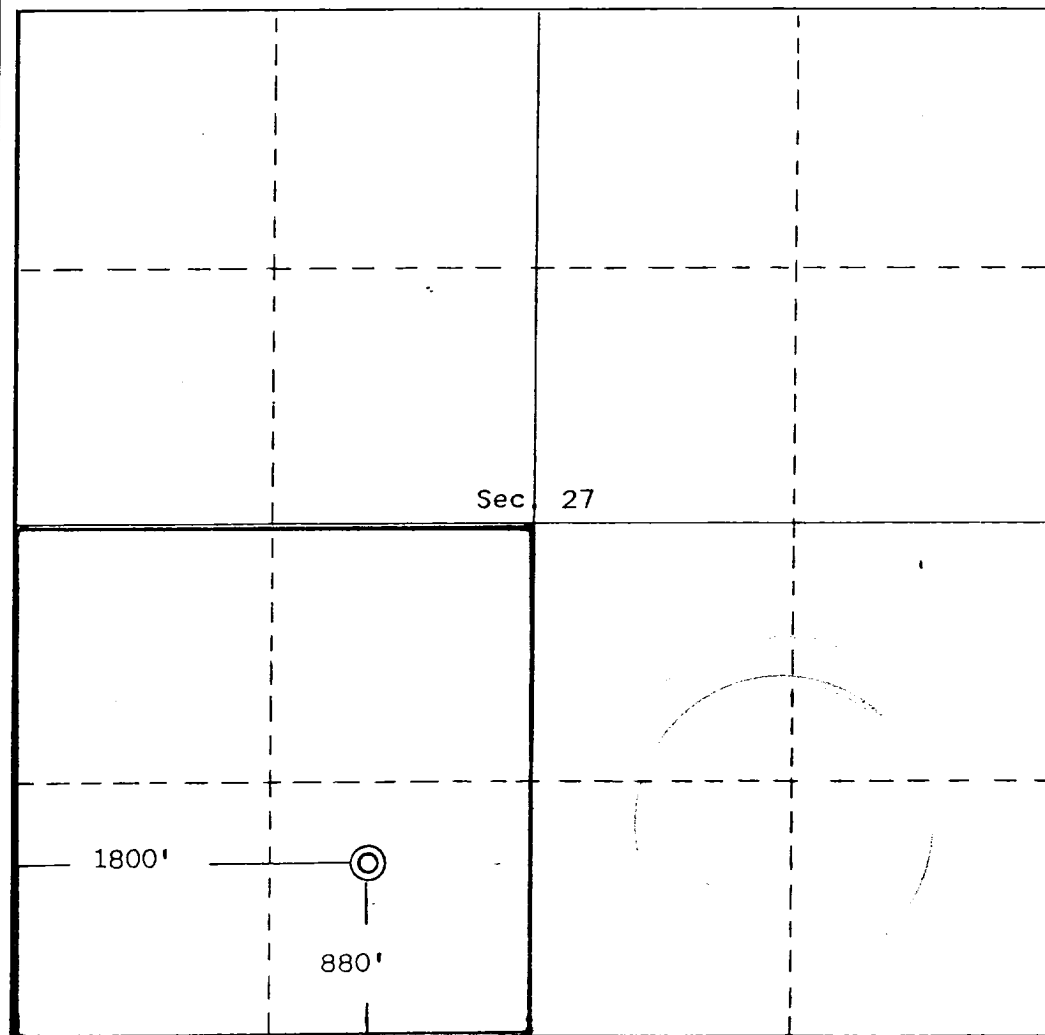
Operator Dugan Production Corporation			Lease Almagre		Well No. #1R
Unit Letter N	Section 27	Township 24 North	Range 1 West	County Rio Arriba	
Actual Footage Location of Well: 880 feet from the South line and 1800 feet from the West line					
Ground Level Elev. 7378	Producing Formation Pictured Cliffs		Pool South Blanco		Dedicated Acreage: 160 Acres

1. Outline the acreage dedicated to the subject well by colored pencil or hachure marks on the plat below.
2. If more than one lease is dedicated to the well, outline each and identify the ownership thereof (both as to working interest and royalty).
3. If more than one lease of different ownership is dedicated to the well, have the interests of all owners been consolidated by communitization, unitization, force-pooling, etc?

☐ Yes ☐ No If answer is "yes," type of consolidation _____

If answer is "no," list the owners and tract descriptions which have actually been consolidated. (Use reverse side of this form if necessary.) _____

No allowable will be assigned to the well until all interests have been consolidated (by communitization, unitization, forced-pooling, or otherwise) or until a non-standard unit, eliminating such interests, has been approved by the Commission.



CERTIFICATION

I hereby certify that the information contained herein is true and complete to the best of my knowledge and belief.

Richard Tully

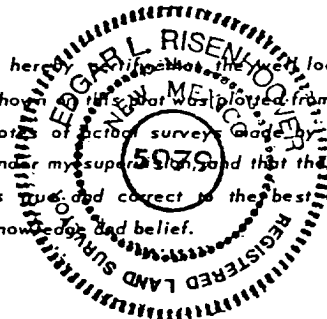
Name
Richard Tully

Position
Landman

Company
Dugan Production Corp.

Date
9-7-79

I hereby certify that the well location shown on this plat was obtained from field notes of actual survey made by me or under my supervision, and that the same is true and correct to the best of my knowledge and belief.



Date Surveyed
September 4, 1979

Registered Professional Engineer
and/or Land Surveyor

Edgar L. Risenhoover

Certificate No. **5979**

Edgar L. Risenhoover

