

30-039-22197

UNITED STATES
DEPARTMENT OF THE INTERIOR
GEOLOGICAL SURVEY

APPLICATION FOR PERMIT TO DRILL, DEEPEN, OR PLUG BACK

1a. TYPE OF WORK
DRILL DEEPEN PLUG BACK

b. TYPE OF WELL
OIL WELL GAS WELL OTHER
SINGLE ZONE MULTIPLE ZONE

2. NAME OF OPERATOR
Mobil Oil Corporation

3. ADDRESS OF OPERATOR
Nine Greenway Plaza, Suite 2700, Houston, Texas 77046

4. LOCATION OF WELL (Report location clearly and in accordance with any State requirements.)
At SURFACE 1840' FNL and 850' FWL, Sec. 7, T24N, R3W

At proposed prod. zone
same as surface

14. DISTANCE IN MILES AND DIRECTION FROM NEAREST TOWN OR POST OFFICE*
50 miles Southeast from Farmington

16. DISTANCE FROM PROPOSED* LOCATION TO NEAREST PROPERTY OR LEASE LINE, FT. (Also to nearest drlg. unit line, if any)
850'

16. NO. OF ACRES IN LEASE
382.52

17. NO. OF ACRES ASSIGNED TO THIS WELL
191.27

18. DISTANCE FROM PROPOSED LOCATION* TO NEAREST WELL, DRILLING, COMPLETED, OR APPLIED FOR, ON THIS LEASE, FT.

19. PROPOSED DEPTH
8200'

20. ROTARY OR CABLE TOOLS
Rotary

21. ELEVATIONS (Show whether DF, RT, GR, etc.)
6886' FR

22. APPROX. DATE WORK WILL START*
December 1, 1979

23. PROPOSED CASING AND CEMENTING PROGRAM

SIZE OF HOLE	SIZE OF CASING	WEIGHT PER FOOT	SETTING DEPTH	QUANTITY OF CEMENT
17.25"	13-3/8"	48# H-40	300'	1) Circulate to Surface
11.0 "	8-5/8"	24# K-55	2500'	2) Circulate to Surface
		32# H-40	3900'	
7.875"	5-1/2"	15.5# K-55	7500'	3) Circulate to 3800'
		17# K-55	8200'	

Cementing Program

- 1) Class A with 2% CaCl₂ (2) Class A with 6% gel tailed in with Neat cement.
3) Class H

Mud Program

Depth	Type of Mud	Weight	Viscosity	pH	Water Loss
0-300'	Spud	10.0	—	—	—
300-8200'	Fresh Water Gel	9.0	40	7-10	No Control

Blowout Preventer Program

Attached

IN ABOVE SPACE DESCRIBE PROPOSED PROGRAM: If proposal is to deepen or plug back, give data on present productive zone and proposed new productive zone. If proposal is to drill or deepen directionally, give pertinent data on subsurface locations and measured and true vertical depths. Give blowout preventer program, if any.

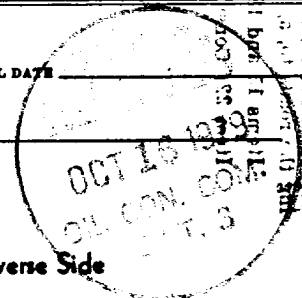
24. SIGNED A. D. Bond A. D. Bond TITLE Regulatory Engineering Coordinator II DATE October 8, 1979

(This space for Federal or State office use)

PERMIT NO. _____ APPROVAL DATE _____

APPROVED BY _____ TITLE _____ DATE _____

CONDITIONS OF APPROVAL, IF ANY:



NEW MEXICO OIL CONSERVATION COMMISSION
WELL LOCATION AND ACREAGE DEDICATION PLAT

Form C-102
Supersedes C-128
Effective 1-1-65

All distances must be from the outer boundaries of the Section.

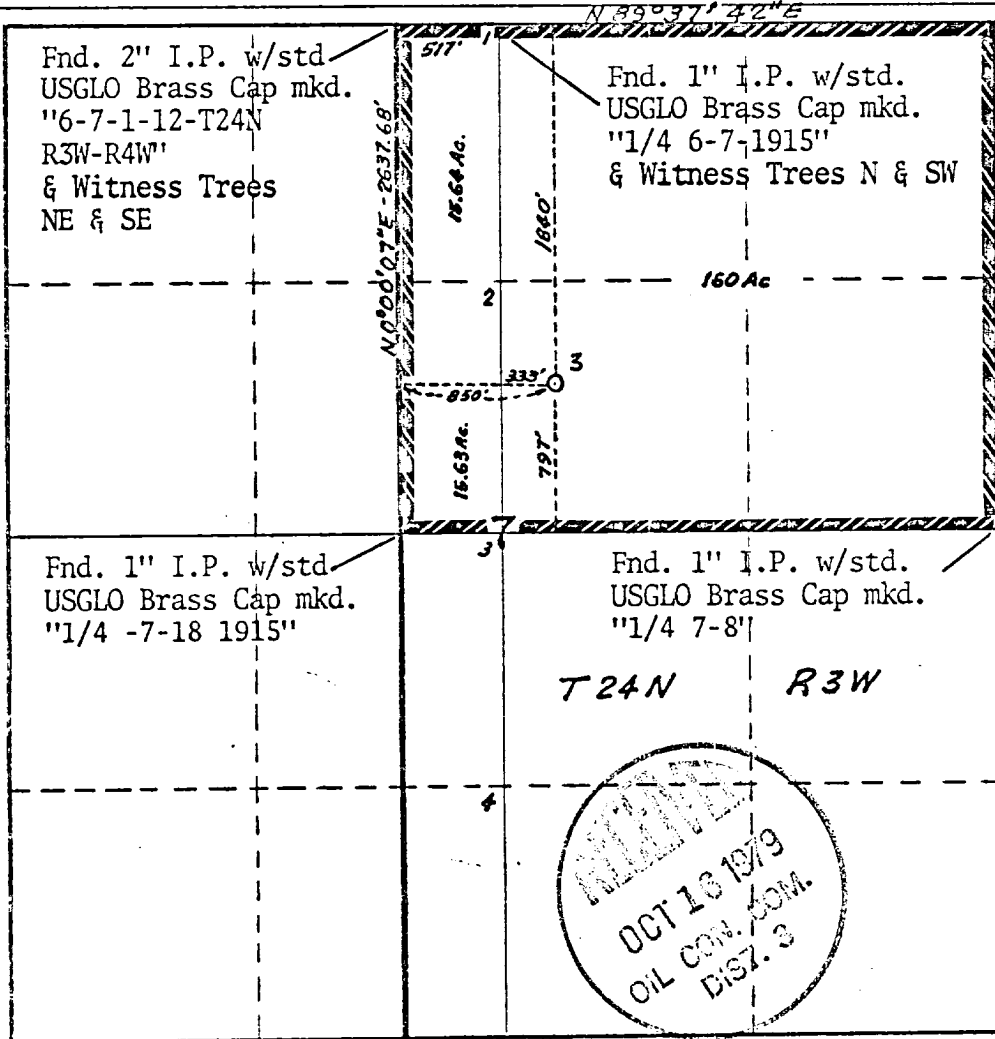
Operator Mobil Oil Corporation		Lease Jillson Federal			Well No. 3
Unit Letter	Section 7	Township 24N	Range 3W	County Rio Arriba	
Actual Footage Location of Well: 1840 feet from the North line and 850 feet from the West line					
Ground Level Elev. 6886'	Producing Formation Gallup - Dakota		Pool West Lindrith Gallup-Dakota Oil	Dedicated Acreage: 191.27 Acres	

1. Outline the acreage dedicated to the subject well by colored pencil or hachure marks on the plat below.
2. If more than one lease is dedicated to the well, outline each and identify the ownership thereof (both as to working interest and royalty).
3. If more than one lease of different ownership is dedicated to the well, have the interests of all owners been consolidated by communitization, unitization, force-pooling, etc?

Yes No If answer is "yes," type of consolidation _____

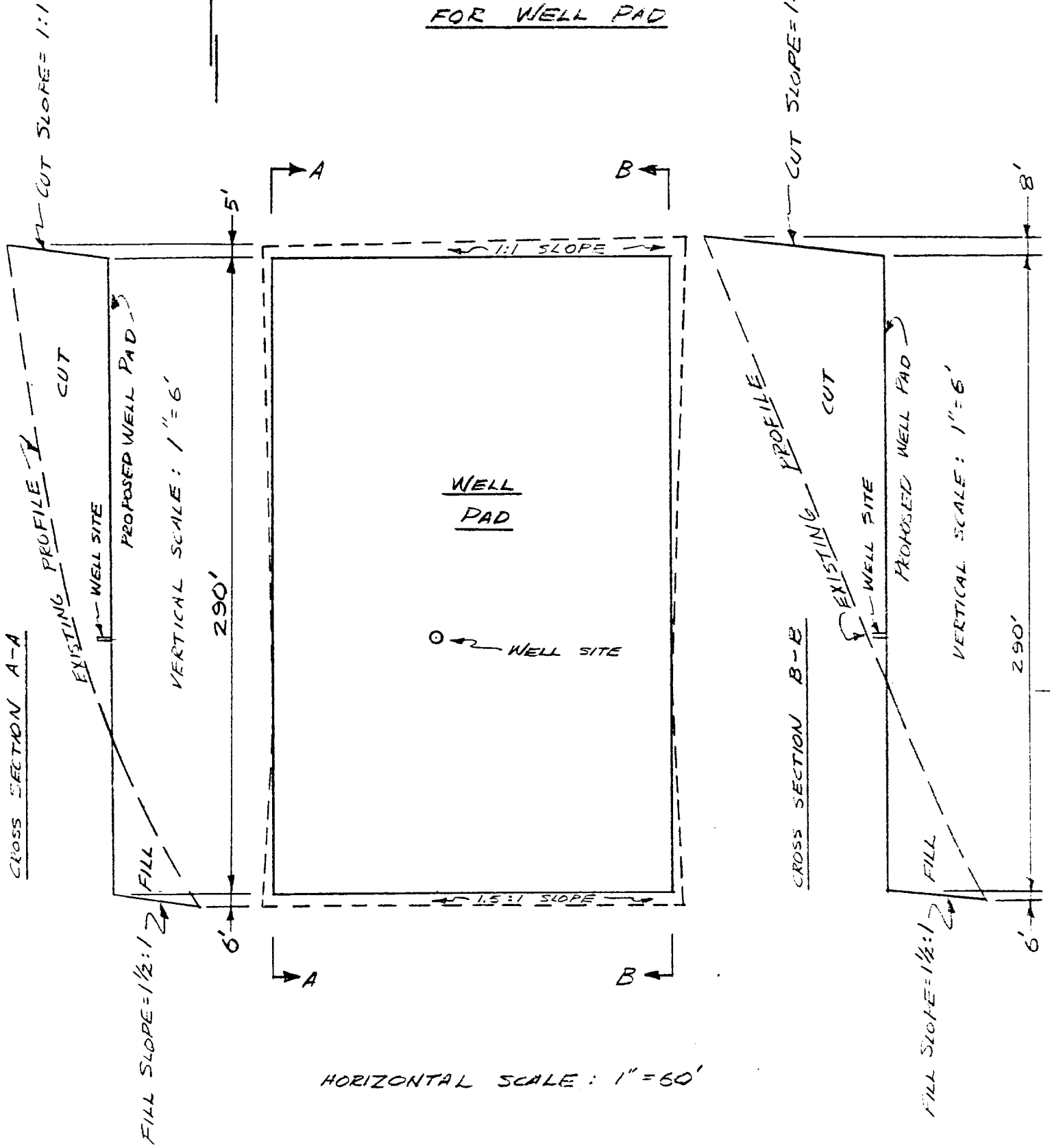
If answer is "no," list the owners and tract descriptions which have actually been consolidated. (Use reverse side of this form if necessary.) _____

No allowable will be assigned to the well until all interests have been consolidated (by communitization, unitization, forced-pooling, or otherwise) or until a non-standard unit, eliminating such interests, has been approved by the Commission.



CERTIFICATION	
I hereby certify that the information contained herein is true and complete to the best of my knowledge and belief.	
Name	A. D. Bond
Position	Regulatory Engineering Coordinator II
Company	Mobil Oil Corporation
Date	<i>A. D. Bond</i>
I hereby certify that the well location shown on this plat was plotted from field notes of actual surveys made by me or under my supervision and that the same is true and correct to the best of my knowledge and belief.	
Date Surveyed	<i>H. A. Carson, Jr.</i>
September 13, 1979	
Registered Professional Engineer and/or Land Surveyor	
H. A. Carson, Jr.	
Certificate No.	5067

EXISTING AND PROPOSED
GROUND PROFILES
FOR WELL PAD



"FIGURE D"

RMH 3-20-79

