

UNITED STATES  
DEPARTMENT OF THE INTERIOR  
GEOLOGICAL SURVEY

## SUNDRY NOTICES AND REPORTS ON WELLS

(Do not use this form for proposals to drill or to deepen or plug back to a different reservoir. Use Form 9-331-C for such proposals.)

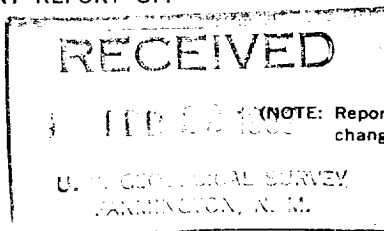
1. oil ☒ gas ☐  
well; well other2. NAME OF OPERATOR  
Cotton Petroleum Corporation3. ADDRESS OF OPERATOR 80202  
717 17th St., Suite 2200, Denver, Colorado4. LOCATION OF WELL (REPORT LOCATION CLEARLY. See space 17 below.)  
AT SURFACE: 1980' FWL & 1980' FSL  
AT TOP PROD. INTERVAL:  
AT TOTAL DEPTH:

16. CHECK APPROPRIATE BOX TO INDICATE NATURE OF NOTICE, REPORT, OR OTHER DATA

## REQUEST FOR APPROVAL TO:

TEST WATER SHUT-OFF ☐  
FRACTURE TREAT ☐  
SHOOT OR ACIDIZE ☐  
REPAIR WELL ☐  
PULL OR ALTER CASING ☐  
MULTIPLE COMPLETE ☐  
CHANGE ZONES ☐  
ABANDON\* ☐  
(other) ☐

## SUBSEQUENT REPORT OF:

☐  
☐  
☒  
☐  
☐  
☐  
☐  
☐5. LEASE  
Contract #1276. IF INDIAN, ALLOTTEE OR TRIBE NAME  
Jicarilla7. UNIT AGREEMENT NAME  
NA8. FARM OR LEASE NAME  
Apache9. WELL NO.  
13210. FIELD OR WILDCAT NAME  
Lindrieth Gallup Dakota West11. SEC., T., R., M., OR BLK. AND SURVEY OR AREA  
Section 4-T24N-R4W12. COUNTY OR PARISH  
Rio Arriba13. STATE  
New Mexico14. API NO.  
30-039-2221615. ELEVATIONS (SHOW DF, KDB, AND WD)  
6782' GR

17. DESCRIBE PROPOSED OR COMPLETED OPERATIONS (Clearly state all pertinent details, and give pertinent dates, including estimated date of starting any proposed work. If well is directionally drilled, give subsurface locations and measured and true vertical depths for all markers and zones pertinent to this work.)\*

The following work has been completed to successfully shut off Burrow Canyon water. The Gallup perms from 6199' - 6317' were cement squeezed with 50 sxs cement on 7-23-81. The Burrow Canyon was perforated at 7367' - 7369' with 4JS and cement squeezed with 150 sxs Class B cement by setting cement retainer at 7180' and squeezing through both the nonproductive Dakota 'D' and the Burrow Canyon perms on 9-25-81. A casing leak was discovered at 4011' and cement squeeze with 150 sxs Class B, cemented on 1-24-82. The well has been cleaned out to a PBTD of 7180' and returned to production from the Dakota 'A' formation.

Gallup making water.

Subsurface Safety Valve: Manu. and Type \_\_\_\_\_

18. I hereby certify that the foregoing is true and correct

SIGNED [Signature] TITLE Div. Prod. Mgr. DATE 2-18-82

(This space for Federal or State office use)

APPROVED BY \_\_\_\_\_  
CONDITIONS OF APPROVAL, IF ANY:

TITLE \_\_\_\_\_ DATE \_\_\_\_\_

ACCEPTED FOR RECORD

MAR 05 1982

FARMINGTON DISTRICT

BY [Signature]

\*See Instructions on Reverse Side

NMOCC