

Correspondence Instructions

Date _____

The Attached Papers Are Referred

To Frank - NMOCC

For the Purpose Indicated by the Check Mark ☒

- ☐ Please note and file.
- ☐ Please note and return to me.
- ☐ Please note and see me about this _____ A. M. _____ P. M.
- ☐ Please answer, sending me copy of your letter.
- ☐ Please prepare reply for my signature.
- ☐ Please take charge of this.
- ☐ To be signed.
- ☐ For your information.
- ☐ Your comments, please.
- ☐ For your approval.
- ☐ RUSH—Immediate action desired.

REMARKS: *Frank, for your information
They will use this for committee
purposes.*

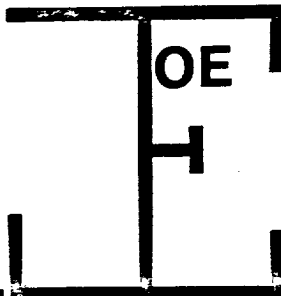
Charles

Signed

Joe

TOPS—FORM 1272 

LITHO IN U.S.A.



200 West 25th Street
Farmington, New Mexico 87401
(505) 327-9267
(505) 325-1873 (Car 851)

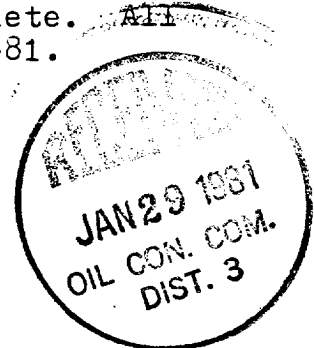
ILLEDGE

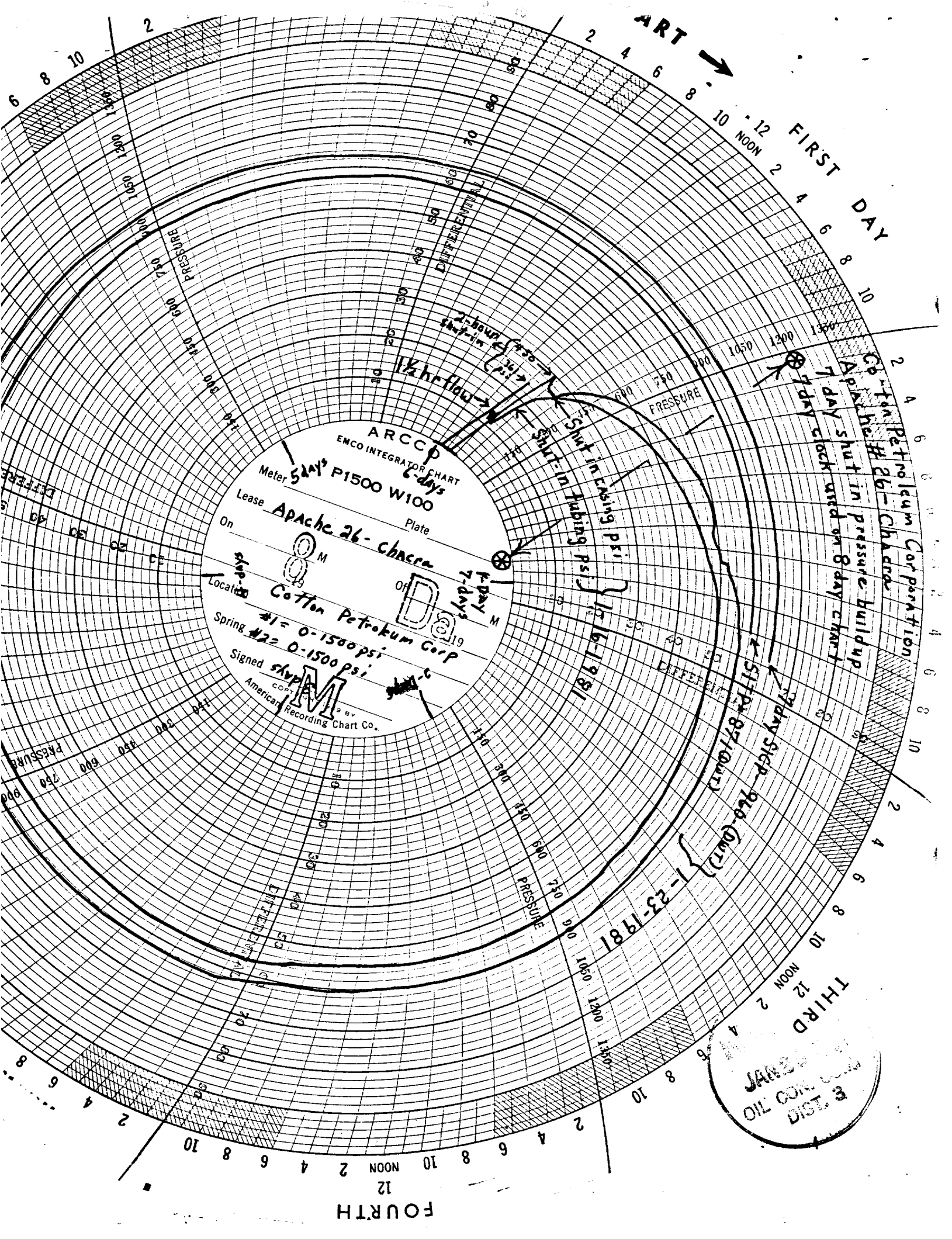
OIL and GAS PROPERTY MANAGEMENT
January 23, 1981

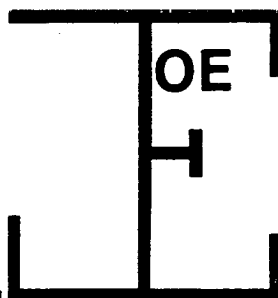
Cotton Petroleum Corporation

Apache #26
Chacra Formation
Special Test

- 1-14-81: Well had been shut-in for 24 hours. SITP=516psi. SICP=625 psi. Chacra opened to atmosphere on 20/64th choke to clean up.
- 1-15-81: At 1:00 p.m. after 27 hours flow, FTP=119 psi., FCP=200 psi. Flow rate= 325MCF/D. Chacra unloading heavy spray of white water. Shut in well to install test equipment. Opened well to atmosphere through a .750" orifice plate at 12:05 p.m.
- 1-16-81: Shut-in Chacra at 12:00 Noon. After 24 hours flow, flow rate= (317 MCF/D, FTP= 125psi.) FCP= 211psi. Well producing heavy spray of water at end of test. Well shut-in for 2 hours to rig up Otis and to run pressure bomb. Bomb set at 3420' and fluid level hit at 2900'. 2 hour shut-in pressure= 361 psi on the tubing and 450 psi on the casing. Well on at 2:00 p.m. for 1½ hours. Flow rate= 303 MCF/D, FTP= 179 psi, and FCP= 434 psi. Well surging heavy slugs of water at the end of test. Shut-in for 7 day build up pressure with bomb in hole.
- 1-23-81: Chacra shut-in for 7 days with 2 pen recorded installed. SITP= 871 psi., SICP=961 psi. Test complete. All pressures are deadweight except for 1-14-81.







LLEDGE

200 West 25th Street
Farmington, New Mexico 87401
(505) 327-9267
(505) 325-1873 (Car 851)

OIL and GAS PROPERTY MANAGEMENT

