

UNITED STATES
DEPARTMENT OF THE INTERIOR
GEOLOGICAL SURVEY

APPLICATION FOR PERMIT TO DRILL, DEEPEN, OR PLUG BACK

1a. TYPE OF WORK

DRILL ☒DEEPEN ☐PLUG BACK ☐

b. TYPE OF WELL

OIL
WELL ☐GAS
WELL ☒

OTHER

SINGLE
ZONE ☐MULTIPLE
ZONE ☐

2. NAME OF OPERATOR

Cotton Petroleum Corporation

3. ADDRESS OF OPERATOR

717 17th St., Suite 2200, Denver, Colorado 80202

4. LOCATION OF WELL (Report location clearly and in accordance with any State requirements.)*

At surface

820' FEL, 1600' FSL, Section 24

At proposed prod. zone

14. DISTANCE IN MILES AND DIRECTION FROM NEAREST TOWN OR POST OFFICE*

15. DISTANCE FROM PROPOSED*

LOCATION TO NEAREST
PROPERTY OR LEASE LINE, FT.
(Also to nearest drilg. unit line, if any)

820

16. NO. OF ACRES IN LEASE

19. PROPOSED DEPTH

3200'

17. NO. OF ACRES ASSIGNED
TO THIS WELL

160

20. ROTARY OR CABLE TOOLS

Rotary

21. ELEVATIONS (Show whether DF, RT, GR, etc.)

6924' GR

22. APPROX. DATE WORK WILL START*

April, 1980

23.

PROPOSED CASING AND CEMENTING PROGRAM

SIZE OF HOLE	SIZE OF CASING	WEIGHT PER FOOT	SETTING DEPTH	QUANTITY OF CEMENT
12-1/4"	8-5/8"	24#	100'	150 sx
7-7/8"	4-1/2"	10.5#	3200'	To be determined

It is proposed to drill this well with rotary tools using drilling mud for circulation through the Pictured Cliffs formation. All possible productive intervals in the Pictured Cliffs will be completed.

Estimated formation tops:

Ojo Alamo
Kirtland

2500'
2700'

Fruitland 2920'
Pictured Cliffs 3040'

The SE $\frac{1}{4}$ of Section 24 is dedicated to this well. The gas produced from this well will be sold to Northwest Pipeline Co.

IN ABOVE SPACE DESCRIBE PROPOSED PROGRAM: If proposal is to deepen or plug back, give data on present productive zone and proposed new productive zone. If proposal is to drill or deepen directionally, give pertinent data on subsurface locations and measured and true vertical depths. Give blowout preventer program, if any.

24.

SIGNED

DE. Wood

TITLE

Division Production Manager

DATE October 23, 1979

(This space for Federal or State office use)

PERMIT NO.

APPROVAL DATE

APPROVED BY

TITLE

DATE

CONDITIONS OF APPROVAL, IF ANY:

ok Frank

*See Instructions On Reverse Side

OIL CONSERVATION DIVISION

STATE OF NEW MEXICO
ENERGY AND MINERALS DEPARTMENT

P. O. BOX 2088

SANTA FE, NEW MEXICO 87501

Form C-102
Revised 10-1-78

All distances must be from the outer boundaries of the Section.

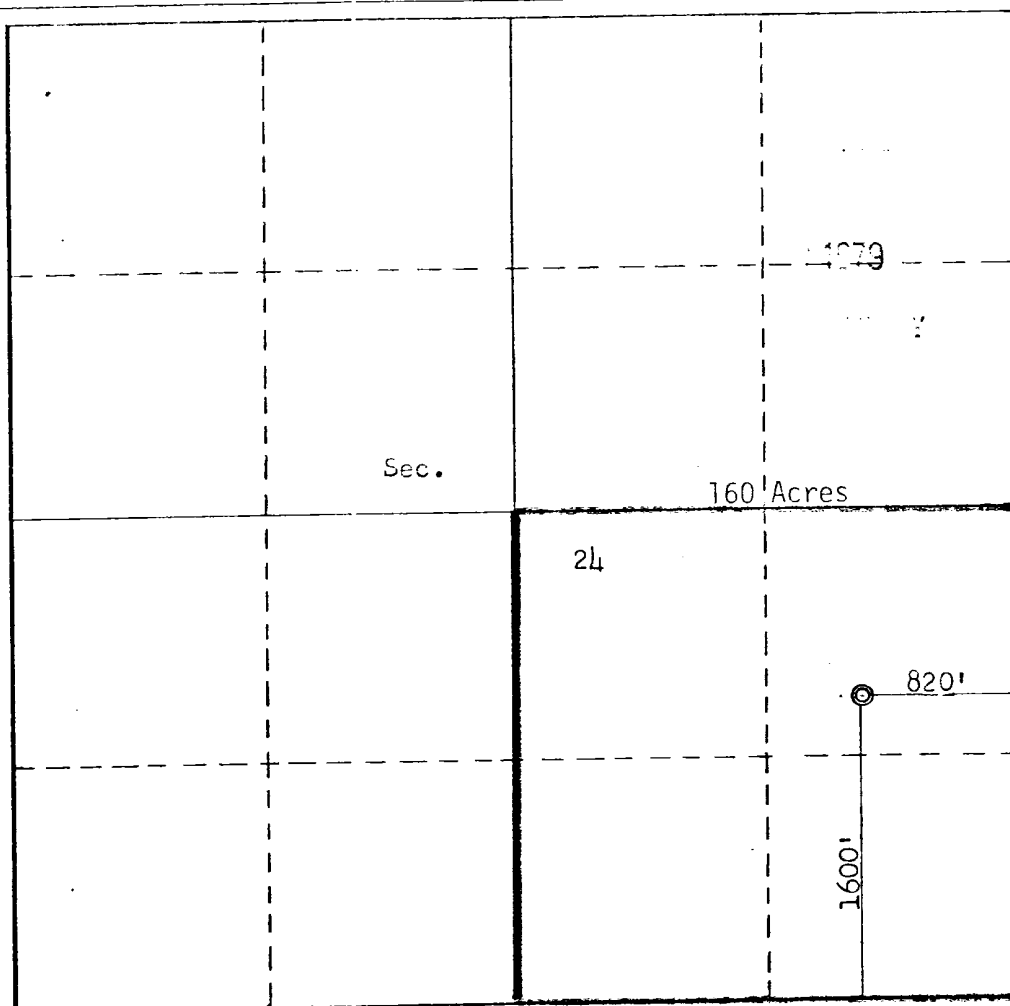
Operator COTTON PETROLEUM CORPORATION			Lease APACHE		Well No. 27
Unit Letter I	Section 24	Township 24N	Range 4W	County Rio Arriba	
Actual Footage Location of Well: 1600 feet from the South line and 820 feet from the East line					
Ground Level Elev. 6924	Producing Formation Pictured Cliffs		Pool So. Blanco Pictured Cliffs		Dedicated Acreage: 160 Acres

1. Outline the acreage dedicated to the subject well by colored pencil or hachure marks on the plat below.
2. If more than one lease is dedicated to the well, outline each and identify the ownership thereof (both as to working interest and royalty).
3. If more than one lease of different ownership is dedicated to the well, have the interests of all owners been consolidated by communization, unitization, force-pooling, etc?

☐ Yes ☐ No If answer is "yes," type of consolidation _____

If answer is "no," list the owners and tract descriptions which have actually been consolidated. (Use reverse side of this form if necessary.) _____

No allowable will be assigned to the well until all interests have been consolidated (by communization, unitization, forced-pooling, or otherwise) or until a non-standard unit, eliminating such interests, has been approved by the Commission.



CERTIFICATION

I hereby certify that the information contained herein is true and complete to the best of my knowledge and belief.

D.E. Wood / JKS

Name

D. E. Wood

Position

Division Production Manager

Company

Cotton Petroleum Corporation

Date

October 23, 1979

I hereby certify that the well location shown on this plat was plotted from field notes of actual surveys made by me or under my supervision, and that the same is true and correct to the best of my knowledge and belief.

Date Surveyed

September 30, 1979

Registered Professional Engineer and/or Land Surveyor

Fred B. Kern, Jr.

Certificate No.

3950

COTTON PETROLEUM CORPORATION
APACHE NO. 27

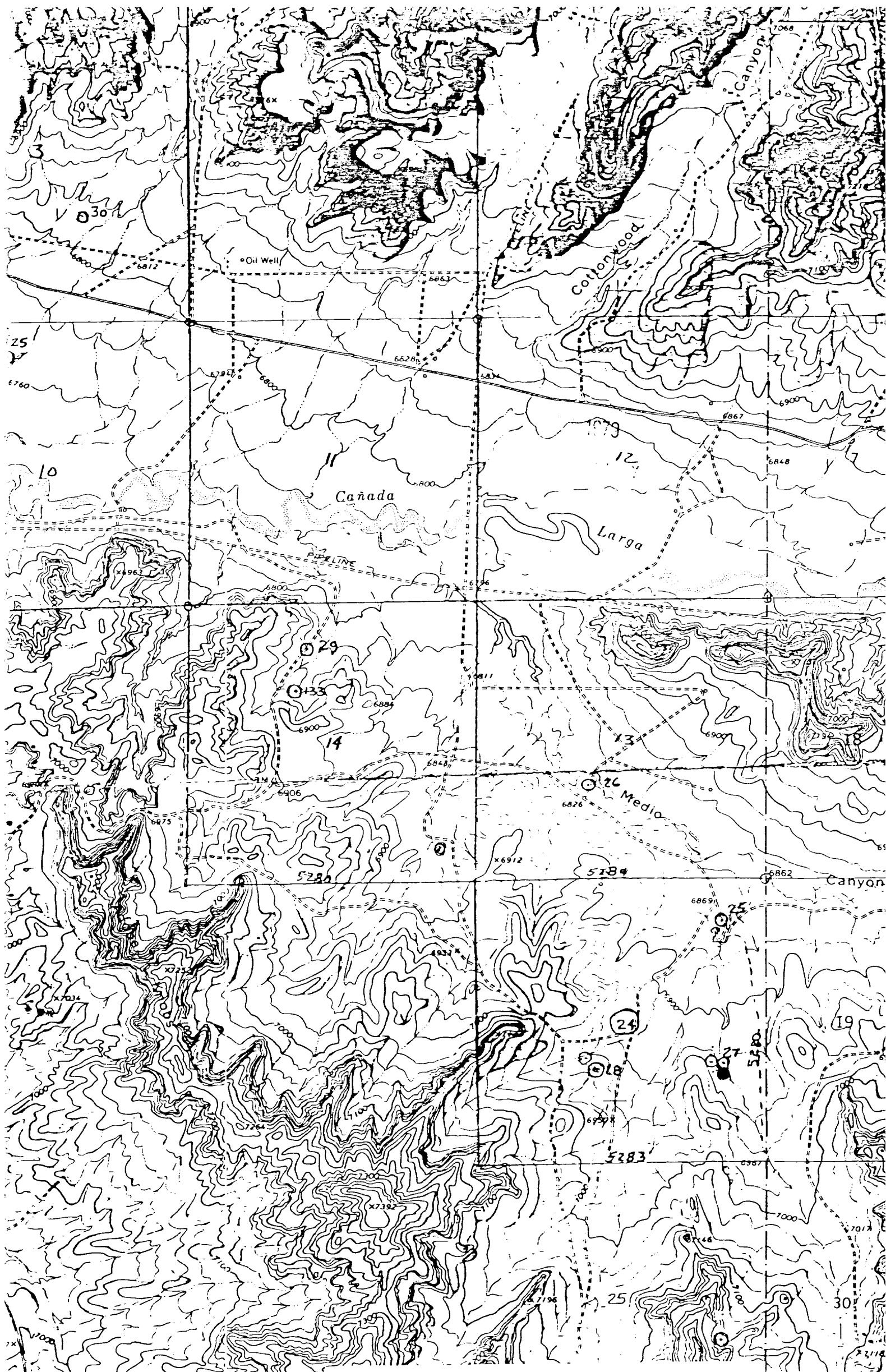
Multi-Point Surface Use Plan

1. Existing Road - Please refer to Map No. 1 which shows the existing roads. New roads which will be required have been marked on this map. All existing and new roads will be properly maintained during the duration of this project.
2. Planned Access Roads - Please refer to Map No. 1. The grade of the access roads will be consistent with that of the local terrain. The road surface will not exceed twenty feet (20') in width. Upon completion of the project, the access road will be adequately drained to control soil erosion. Drainage facilities may include ditches, water bars, culverts or any other measure deemed necessary by trained Company personnel to insure proper drainage. Gates and/or cattleguards will be installed if necessary.
3. Location of Existing Wells - Please refer to Attachment No. 2.
4. Location of Tank Batteries - Production facilities will be installed on location.
5. Location and Type of Water Supply - Water for the proposed project will be obtained from a water hole located at Largo Wash, SW/4, Sec. 9, T24N, R4W.
6. Source of Construction Materials - No additional materials will be required to build either the access road or the proposed location.
7. Methods of Handling Waste Materials - All garbage and trash materials will be put into a burn pit shown on Attachment No. 3. When clean-up operations are begun on the proposed project, the burn pit with its refuse will be buried to a depth of at least three feet (3'). If large amounts of liquids are left in the reserve pit after completion of the project, the pit will be fenced until the liquids have had adequate time to dry. The location clean-up will not take place until such time as the reserve pit can be properly covered over to prevent run-off from carrying any of these materials into the watershed. No earthen pit will be located

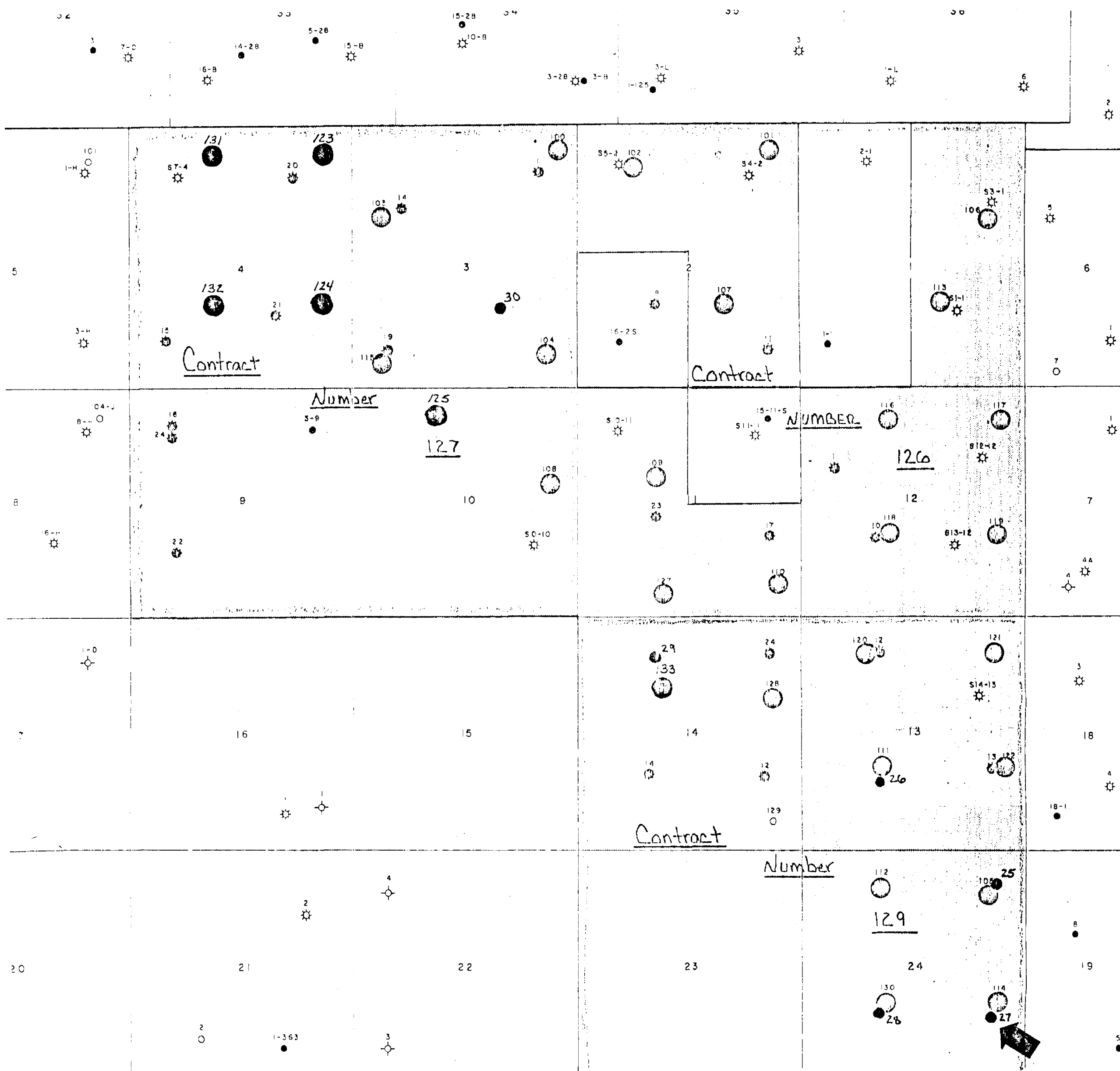
on natural drainages; all earthen pits will be so constructed as to prevent leakage from occurring.

8. Ancillary Facilities - No camps or airstrips will be associated with this project.
9. Wellsite Layout - Please refer to Attachment No. 3.
10. Plans for Restoration of the Surface - After completion of the proposed project, the location will be left in such a condition that will enable reseeding operation to be carried out. The reseeding operation will be performed during the time period set forth by the regulatory body. The location production equipment will be painted.
11. Other Information - The terrain is high sandstone ledges and sagebrush flats with pinon and cedar growing. Cattle graze the proposed project site.
12. Operator's Representatives -
Howard Davis
Farmington, New Mexico
Phone: (505) 325-2409 (Office)
(505) 327-6443 (Home)
Steve Zamets
Denver, Colorado
Phone: (303) 893-2233 (Office)
(303) 794-0494 (Home)
D. E. Wood
Denver, Colorado
Phone: (303) 893-2233 (Office)
(303) 773-2722 (Home)
13. Certification - I hereby certify that I, or persons under my direct supervision, have inspected the proposed drillsite and access route; that I am familiar with the conditions which presently exist; that the statements made in this plan are, to the best of my knowledge, true and correct; and, that the work associated with the operations proposed herein will be performed by Cotton Petroleum Corporation and its contractors and subcontractors in conformity with this plan and the terms and conditions under which it is approved.

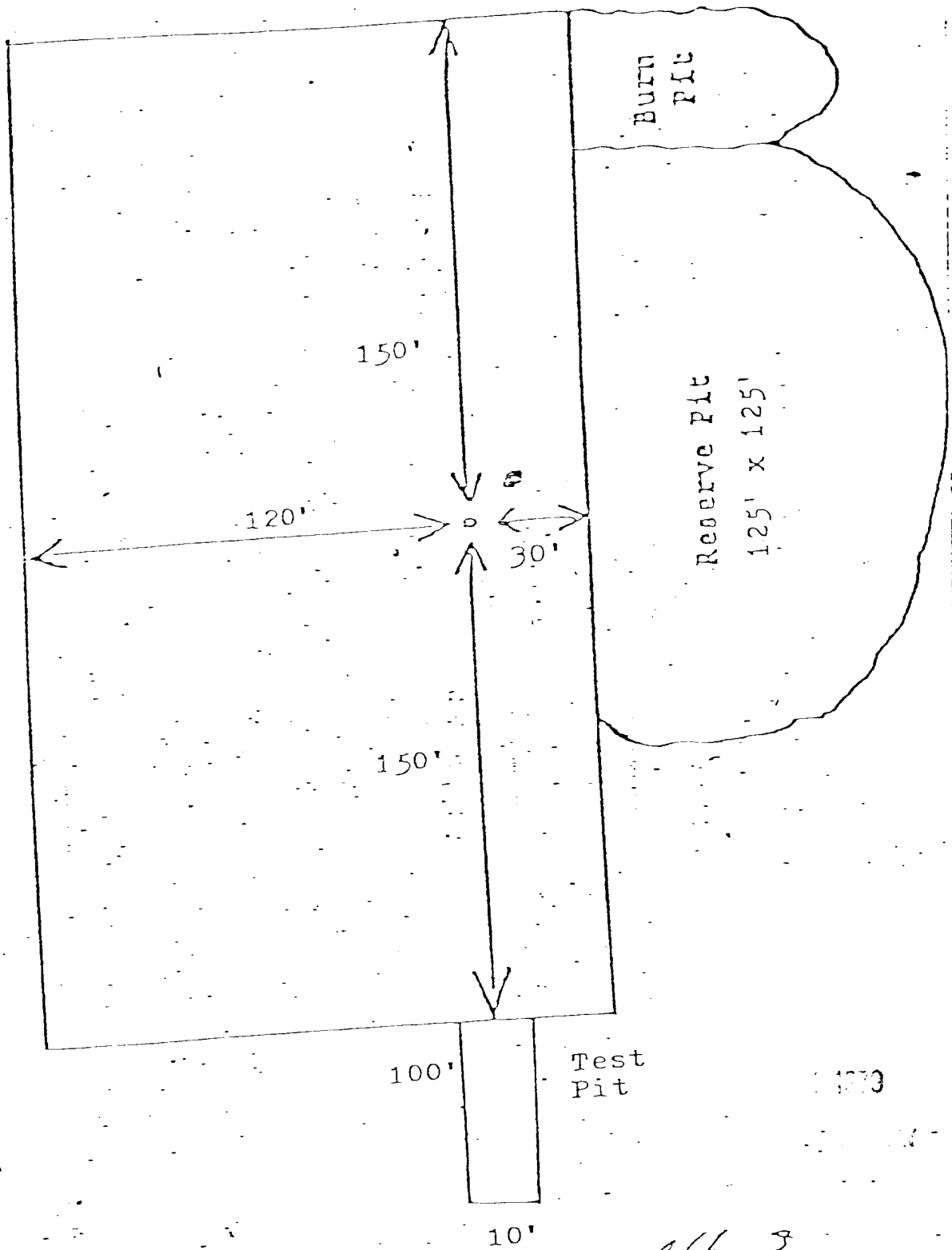
D.E. Wood / D.E.W.
D. E. Wood, Division Production Manager



Vicinity Map for
COTTON PETROLEUM CORPORATION #27 APACHE
1600'FSL 820'FEL Sec 24-T24N-RLW
RIO ARRIBA COUNTY, NEW MEXICO



- Producing Gallup-Dakota Oil Well
- Producing Pictured Cliffs Gas Well
- Proposed 1980 Gallup-Dakota Oil Well
- Proposed 1980 Pictured Cliffs Gas Well



Attachment 3

COTTON PETROLEUM CORPORATION

APACHE NO. 27-

820' FEL, 1600' FSL

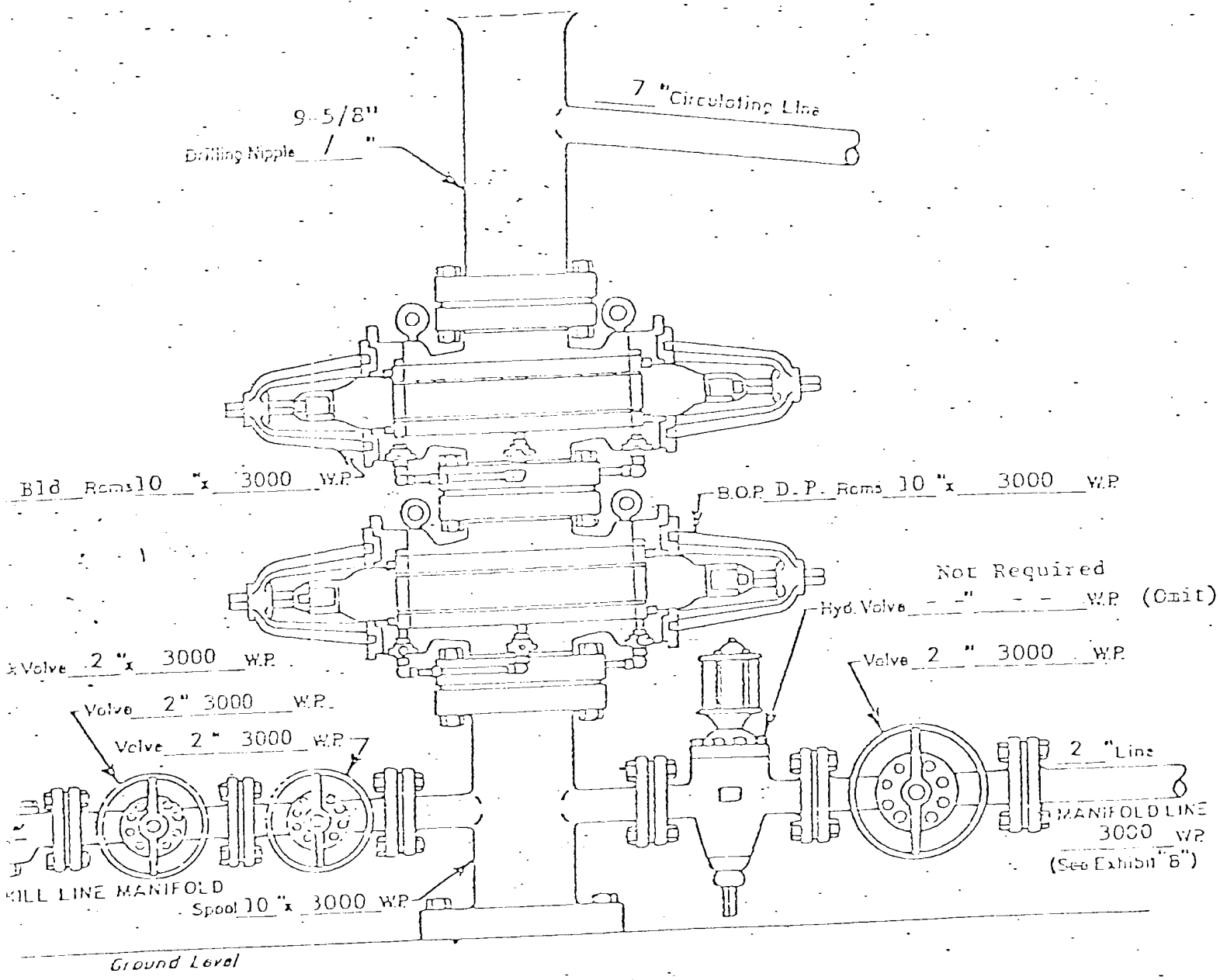
Sec 24 - T24N-R4W

Rio Arriba Co., N.M.

Seven Point Well Control Program

1. Surface Casing.
See Application for Permit to Drill.
2. Spools and Flanges.
 - A. Surface Casing - 10", Series 900, 3000 psi W.P.
 - B. Production, 10", Series 900, 3000 psi W.P.
 - C. Tubing Head - Series 900, 3000 psi. W.P.
3. Intermediate Casing.
None
4. Blowout Preventers
Production Hole - 10", 3000 psi
Fill, Kill and choke manifold - 5000 psi. W.P.
5. Additional Equipment (If necessary)
 - A. Kelly Cock
 - B. Bit Float
 - C. Degasser
 - D. Pit Level Indicator
 - E. Sub with Valve for drill pipe.
6. Anticipated Bottom Hole Pressure.
3100 psi. Current mud program is for 9.2 lb./gal mud with hydrostatic head of 3600 psi at 7390 feet. Mud weight will be increased if necessary for higher pressures.
7. Drilling Fluid.
Oil Base Mud.

WELL NAME: Apache No. 27
 LOCATION: 820' FEL, 1600' FSL
 Sec. 24 T24N-R4W
 Rio Arriba Co., N.M.



WELL HEAD B.O.P.
 3000 W.P.

☒ Hydraulic

COLEMAN DRILLING CO.

P. O. BOX 1515

FARMINGTON, N. M. 87401

PHONE 308 / 328-4832

DRILLING RIG INVENTORY

RIG # 2

RATED DEPTH CAPACITY 8,000 FEET WITH 4 1/2" DRILL PIPE

DERRICK: 127' LEE C. MOORE W/440,000 HOOK LOAD CAPACITY

SUBSTRUCTURE: LEE C. MOORE - 13' K.B.

DRAWWORKS: H-40 D IDECO

ENGINES: 2 EACH V-8 DETROIT DIESEL

MUD PUMPS: IDECO PM600 W/CATERPILLER D-379TA
555 MAX. HP AT 1100 RPM
500 INT. HP AT 1100 RPM
420 CONT. HP AT 1100 RPM

AUXILIARY MUD PUMP
GARDNER-DENVER F X Z
W/343TAC CATERPILLER

FILTER: PIONEER 8 CONE CAPACITY 400 GPM

MUD TANK: 1 EACH 500 BBL. (42 GAL PER BBL.) WORKING CAPACITY

WATER STORAGE: 1 EACH 480 BBL. (42 GAL PER BBL.)

GENERATORS: 1 EACH 90 KW AC AND 1 EACH 30 KW AC

ROTARY TABLE: 23" IDECO

TRAVELLING BLOCK: NATIONAL 430 - 150 TONS W/COMB. HOOK

SWIVEL: OHWELL PC 225

BLOW OUT PREVENTER: 10" SHAFFER LWS 3000 WP HYDRAULIC

SPECIAL: CROWN-O-MATIC
SATELITE AUTOMATIC DRILLER
TONG TORQUE GAUGE
RATE OF PENETRATION RECORDER
SHALE SHAKER
TRAILER HOUSE
TWO-WAY RADIO

1070