

✓

OIL CONSERVATION COMMISSION
Alto DISTRICT

OIL CONSERVATION COMMISSION
BOX 2088
SANTA FE, NEW MEXICO

DATE 12-19-79

RE: Proposed MC _____
Proposed DHC _____
Proposed NSL X _____
Proposed SWD _____
Proposed WFX _____
Proposed PMX _____

Gentlemen:

I have examined the application dated 12-17-79
for the Kenai Oil and Gas Inc., Federal 18^{#11} D-18-24N-1W
Operator Lease and Well No. Unit, S-T-R

and my recommendations are as follows:

Approve

Yours very truly,

Frank S. Chang

**NEW MEXICO OIL CONSERVATION COMMISSION
WELL LOCATION AND ACREAGE DEDICATION PLAT**

Form C-102
Supersedes C-128
Effective 1-1-65

All distances must be from the outer boundaries of the Section.

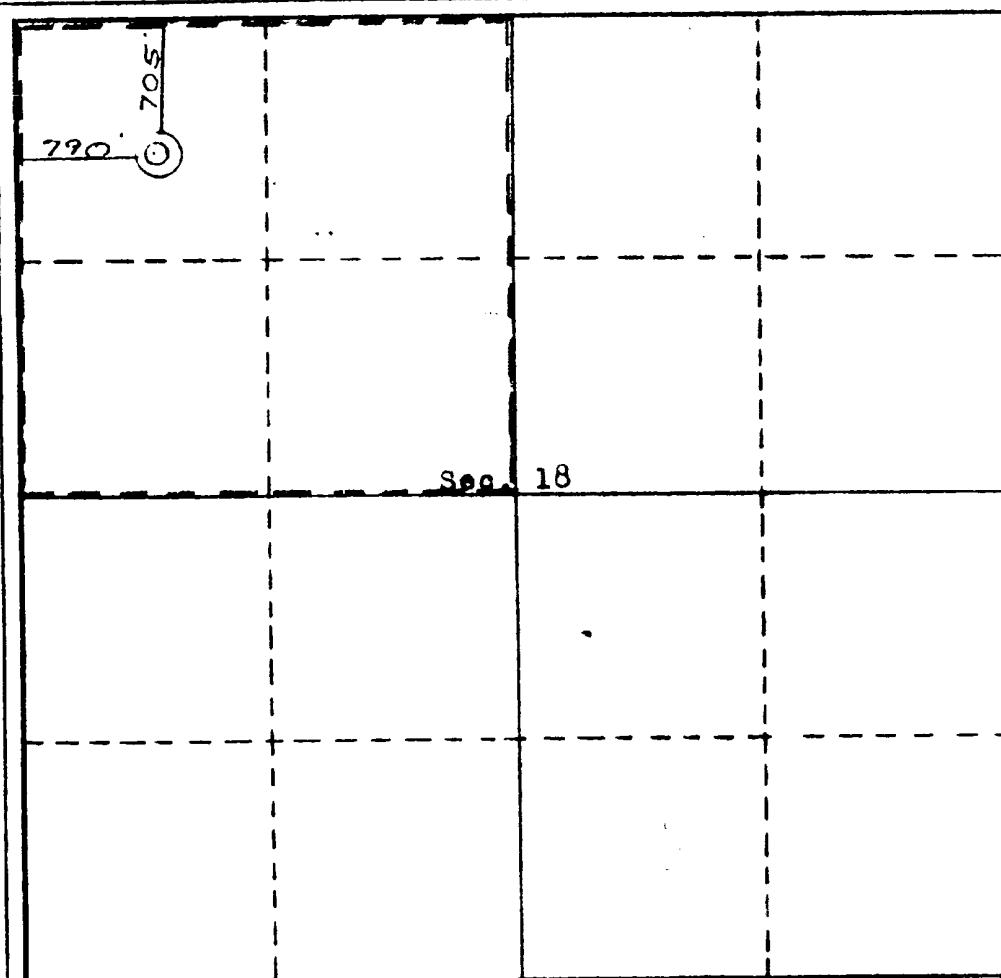
Operator KENAI OIL & GAS			Lease FEDERAL		Well No. 11-18
Unit Letter D	Section 18	Township 24 NORTH	Range 1 WEST	County RIO ARriba	
Actual Footage Location of Well: 705 feet from the NORTH line and 790 feet from the WEST line					
Ground Level Elev. 7437.0	Producing Formation Gavilan Pictured Cliffs		Pool South Blanco Ext.		Dedicated Acreage: 160 Acres

1. Outline the acreage dedicated to the subject well by colored pencil or hachure marks on the plat below.
2. If more than one lease is dedicated to the well, outline each and identify the ownership thereof (both as to working interest and royalty).
3. If more than one lease of different ownership is dedicated to the well, have the interests of all owners been consolidated by communitization, unitization, force-pooling, etc?

☐ Yes ☐ No If answer is "yes," type of consolidation _____

If answer is "no," list the owners and tract descriptions which have actually been consolidated. (Use reverse side of this form if necessary.) _____

No allowable will be assigned to the well until all interests have been consolidated (by communitization, unitization, forced-pooling, or otherwise) or until a non-standard unit, eliminating such interests, has been approved by the Commission.



CERTIFICATION

I hereby certify that the information contained herein is true and complete to the best of my knowledge and belief.

Name _____
 Position **Agent**
 Company
Kenai Oil & Gas Inc.
 Date
11-5-79

I hereby certify that the well location shown on this plat was plotted from field notes of actual surveys made by me or under my supervision, and that the same is true and correct to the best of my knowledge and belief.

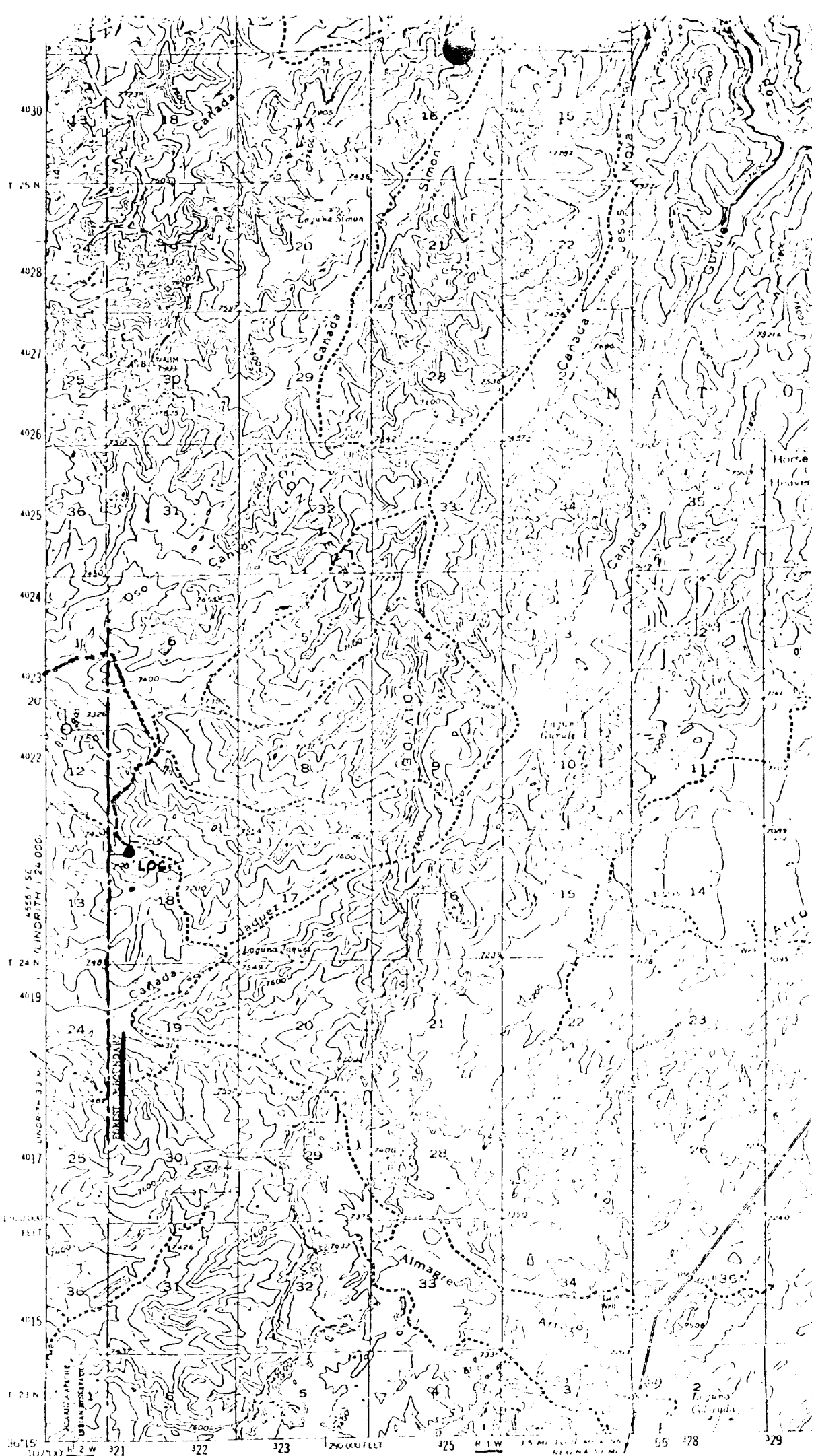
Date Surveyed
24 October, 1979

Registered Professional Engineer
 and/or Land Surveyor
Curtis C. Stocking

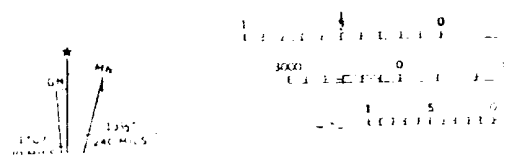
Certificate No.
5960LS



unorthodox



Mapped, edited, and published by the Geological Survey
 Control by USGS and USC&GS
 Topography from aerial photographs by photogrammetric methods
 Aerial photographs taken 1952. Field check 1955
 Polyconic projection. 1927 North American datum
 10 000-foot grid based on New Mexico coordinate system,
 central zone
 Certain land lines unsurveyed in Ts 24 and 26 N. R. 2 E.,
 Ts 25 and 26 N. R. 1 W., and T. 26 N. R. 1 E.
 1000-meter Universal Transverse Mercator grid ticks,
 zone 13, shown in blue



VICINITY MAP
 KENAI OIL & GAS
 Well location in
 Sec. 16 T. 24 N., R. 1 W., N.M.P.M.
 Rio Arriba County, New Mexico
 Scale: 1" = 1 mile